

SECTION 15050

BASIC MECHANICAL REQUIREMENT

Survey and Inspections: The contractor shall visit and survey the existing job site condition, access, and equipment or system to be used, relocation or rerouting before submitting bid or quote. Equipment and system shown from best available information. Contractor shall verify locations. Provide close coordination between sprinkler, plumbing and HVAC. The contractor shall obtain and pay for all applicable local and state permits. All work shall conform to Southern Building Codes, NFPA 90A, NFPA 101-7.2, Standard plumbing Codes, and local and state authorities. Upon completion of the project, the contractor shall obtain inspection and turn over the approved inspection or occupancy certificates to the owner before final invoice.

Submittals: Submit manufacturers literature and data sheets for all equipment furnished. Submit one set of marked-up sepias and one set of marked-up blue lines as "record set" to the owner through the architect for all work.

Submit the following for approval:

Plumbing Fixtures & Trims

Guarantee: All equipment and workmanship shall have a minimum of a one (1) year warranty after the acceptance by the owner.

Cleaning: Each system of piping and ductwork shall be thoroughly cleaned of any debris, rags, etc. prior to being placed in service and before testing is performed.

Hangers and Supports: Provide adjustable hangers, inserts, brackets, clamps, cold rolled channels "Uni-Strut", as required for proper support of all sheet metal work, piping, and equipment independently. Do not support one mechanical system with another system or electrical system.

Provide 12X12 stainless steel access panel with concealed hinges and lock for service to all valves, fire dampers, and traps.

System Balance: After completion of work and before final invoice, all mechanical systems shall be tested and balanced for electrical characteristics, pressure and flow rate as shown on plans or schedules.

All testing and balance work to be performed by independent balance contractor.

END OF SECTION 15050.

SECTION 15400

PLUMBING

General: Provide new domestic water system, waste and vent system to new plumbing fixtures. Obtain exact location of all equipment from architectural drawing. Do not conceal any work until system has been tested and inspected. Notify owner's representative 48 hours before inspection and testing. Coordinate with owner's representative for shut-down before cutting into existing system.

Domestic Water Supply: All domestic water (potable water) systems shall be copper type L with 95/5 tin/antimony solder joints. Provide dielectric joints or union at dissimilar metals. All copper piping shall be supported with copper coated or isolated hanger. Terminate all water piping with 3/8-inch stop valve for fixture connection. All water piping shall be insulated with 3/4" thick insulation with all service jacket. All piping shall be pressure tested to 125 psig for two hours without leakage.

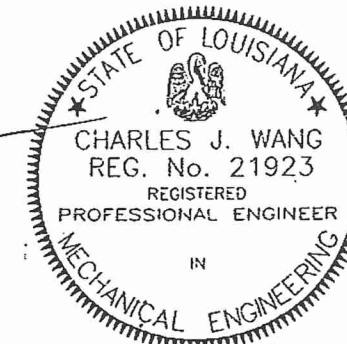
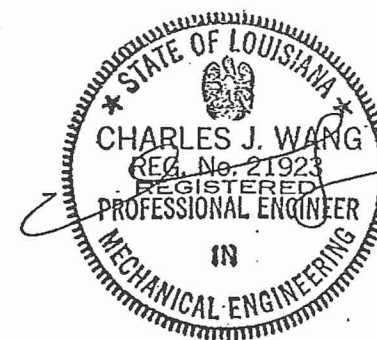
Provide protective sleeve for all copper piping encased in concrete.

Hydronic System: All heating water shall be copper type "L" with 95/5 tin/antimony lead free solder. All piping shall be insulated with 3/4" thick fiberglass insulation with all service barrier and aluminum jacket for above ground piping. All underground piping shall be insulated with foamglass with mastic/fabric coating. Provide isolation between copper pipe and foam glass insulation.

Waste and Vent: All waste and vent shall be cast-iron, standard weight. All above ground shall be not hub joints and below ground, bell and spigot with compression gasket. All sewer piping shall be supported not less than 5-foot apart in conformance to local authorities.

Provide 1/4"Ø stainless steel hanger rod for underground waste piping.

END OF SECTION 15400.



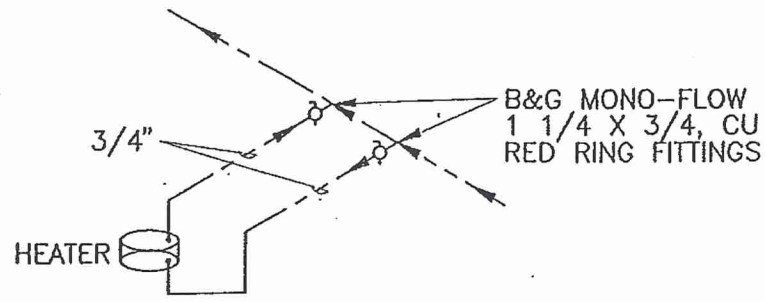
HUSEMAN WANG, INC.
Consulting Engineers

MECHANICAL • ELECTRICAL • PLUMBING • FIRE PROTECTION
3500 N. Causeway Blvd. Suite 333 (504) 834-5393
Metairie, La. 70002 (504) 834-3028 FAX

Job No. 97013.01 Designed By G.Y.
Drawn By G.Y. Checked By C.W.

ST. MARY MAGDALEN SCHOOL
B BUILDING BATHROOM RENOVATIONS AND ADDITIONS
ERROL BARRON/MICHAEL TOUPS ARCHITECTS

REV. MAY 2 97
04/16/97
M-0



HOT WATER HEATER DETAIL
N.T.S.

REMOVE EXIST. C.O. AND
REPLACE 4" WASTE WITH NEW 4".
18X18 ACCESS PANEL

TIE-IN TO EXISTING 1 1/4"
HOT WATER RETURN PIPING.

CLASSROOM

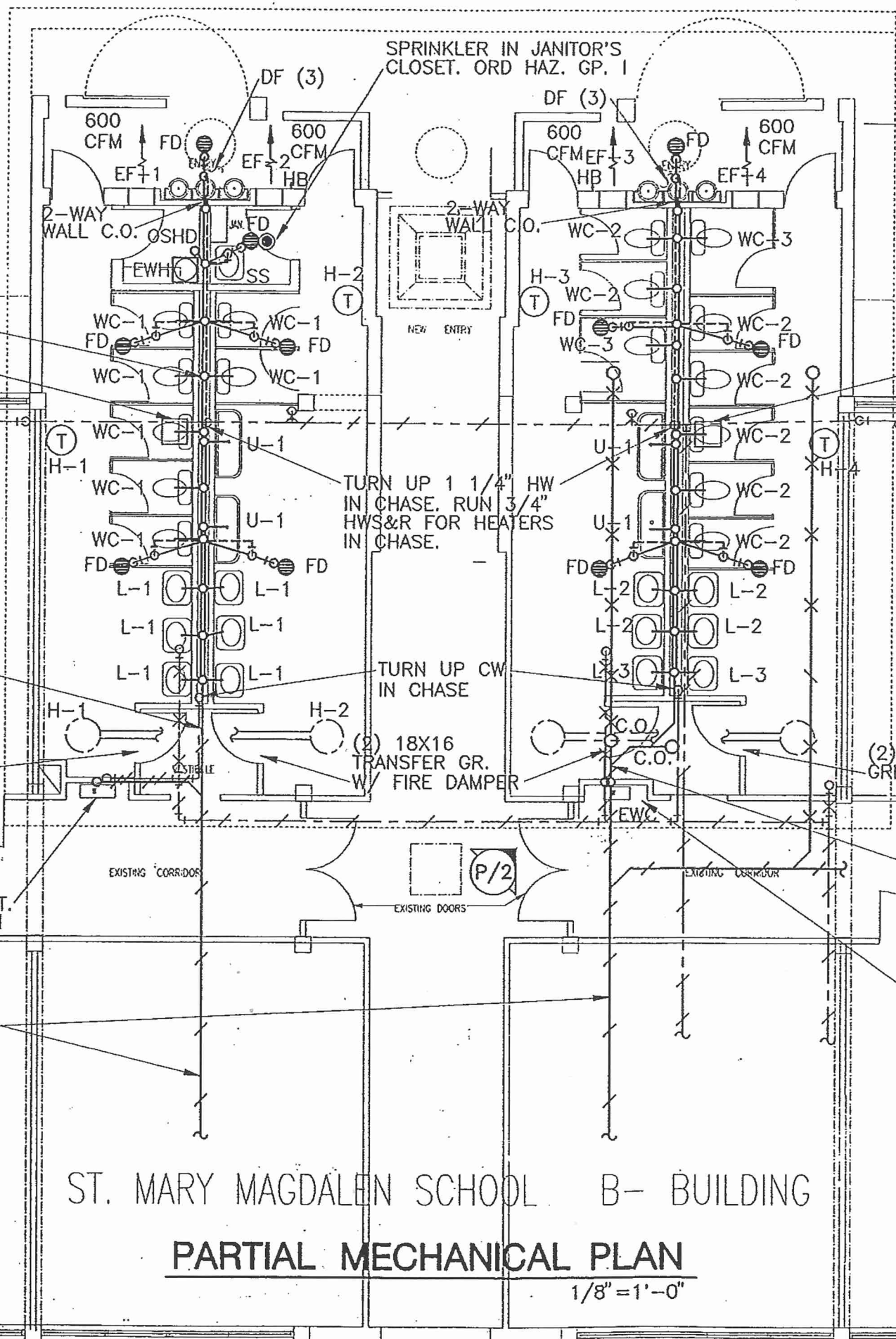
TIE-IN NEW 4" WASTE
TO EXIST. 4" WASTE LINE

(2) 18X16 TRANSFER
GRILLES W/ FIRE DAMPER

(P/1)
EWC, EXIST.
TO REMAIN

EXIST. 4" WASTE

CLASSROOM



PROVIDE PENDENT TYPE SPRINKLER
HEAD IN JANITOR'S CLOSET. CONNECT
TO 1" DOMESTIC COLD WATER SUPPLY
AND INSTALL AN INDICATING SHUT-OFF
VALVE IN AN ACCESSIBLE LOCATION
BETWEEN SPRINKLER AND DOMESTIC
WATER SUPPLY. SHUT OFF VALVE TO
BE LOCKED OPEN WITH PAD LOCK.

18X18 ACCESS PANEL

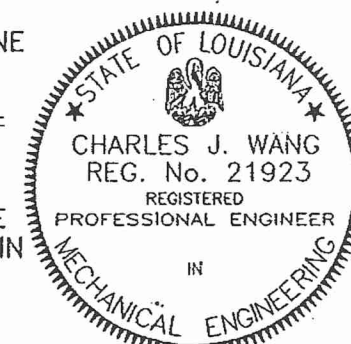
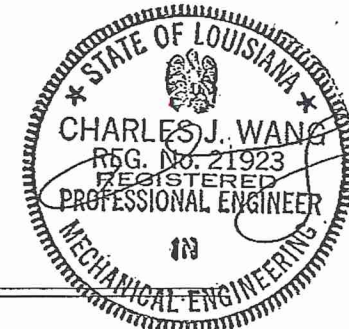
TIE-IN TO EXISTING 1 1/4"
HOT WATER RETURN PIPING.

CLASSROOM

(2) 18X16 TRANSFER
GRILLES W/ FIRE DAMPER

TIE-IN NEW 4" WASTE
TO EXIST. 4" WASTE LINE

REPLACE EXISTING EWC
ADJUST SUPPLY AND WASTE
PIPING FOR NEW EWC TIE-IN
HEIGHTS.
CLASSROOM



ST. MARY MAGDALEN SCHOOL B- BUILDING

PARTIAL MECHANICAL PLAN

1/8" = 1'-0"

HUSEMAN WANG, INC.
Consulting Engineers

MECHANICAL • ELECTRICAL • PLUMBING • FIRE PROTECTION
3500 N. Causeway Blvd. Suite 333 (504) 834-5393
Metairie, La. 70002 (504) 834-3028 FAX

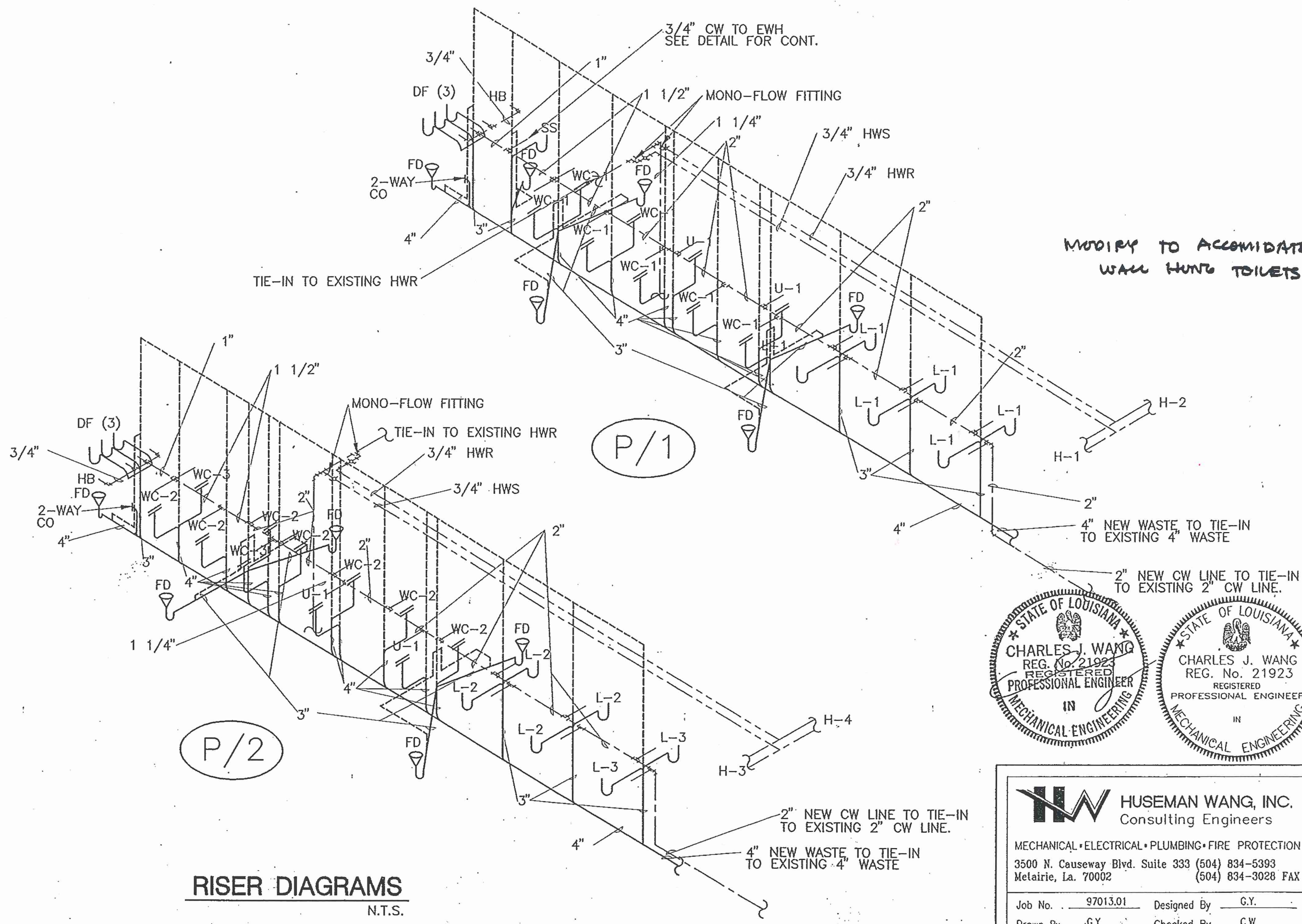
Job No. 97013.01 Designed By G.Y.
Drawn By G.Y. Checked By C.W.

ST. MARY MAGDALEN SCHOOL
B BUILDING BATHROOM RENOVATIONS AND ADDITIONS
ERROL BARRON/MICHAEL TOUPS ARCHITECTS

REV. MAY 2
97

04/16/97

M-1

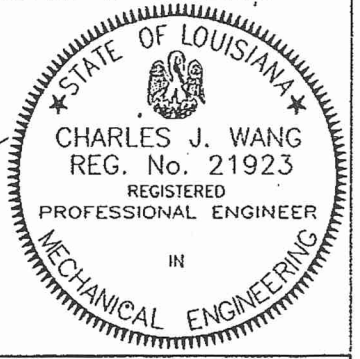
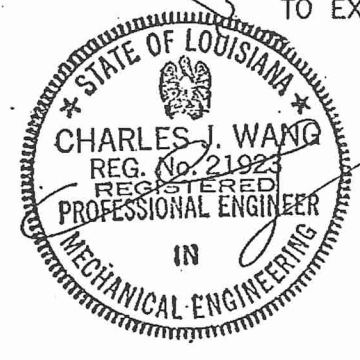


MODIFY TO ACCOMMODATE
WALL HUNG TOILETS

P/2

P/1

RISER DIAGRAMS
N.T.S.



HUSEMAN WANG, INC.
Consulting Engineers

MECHANICAL • ELECTRICAL • PLUMBING • FIRE PROTECTION
3500 N. Causeway Blvd. Suite 333 (504) 834-5393
Metairie, La. 70002 (504) 834-3028 FAX

Job No. 97013.01 Designed By G.Y.
Drawn By G.Y. Checked By C.W.

REV MAY 2
97

04/16/97

M-2

ST. MARY MAGDALEN SCHOOL
B BUILDING BATHROOM RENOVATIONS AND ADDITIONS
ERROL BARRON/MICHAEL TOUPS ARCHITECTS

MECHANICAL LEGEND

- BALL VALVE
- CHECK VALVE, SWING CHECK
- DOMESTIC COLD WATER
- DOMESTIC HOT WATER
- EXIST. DOMESTIC COLD WATER TO REMAIN
- EXIST. DOMESTIC HOT WATER TO REMAIN
- DOMESTIC COLD WATER TO BE REMOVED
- DOMESTIC HOT WATER TO BE REMOVED
- WASTE & VENT
- VENT
- EXIST. VENT
- EXISTING VENT TO BE REMOVED
- SOIL/WASTE
- EXIST. SOIL/WASTE TO REMAIN
- EXISTING SOIL/WASTE TO BE REMOVED
- HORIZONTAL CLEANOUT
- CAP OR PLUG
- OSHD OPEN SITE HUB DRAIN
- CLEANOUT
- ISOLATION VALVE
- FLOOR DRAIN
- VTR VENT THROUGH ROOF
- T THERMOSTAT
- CO CLEAN-OUT
- EWC ELECTRIC WATER COOLER
- EWH ELECTRIC WATER HEATER
- FD FLOOR DRAIN
- HD HUB DRAIN, INDIRECT WASTE
- LAV LAVATORY
- SS SERVICE SINK
- WC WATER CLOSET
- SINK COUNTERTOP SINK
- UG UNDERGROUND
- OSHD OPEN SITE HUB DRAIN
- WH WALL HYDRANT, FREEZELESS, WITH VACUUM BREAKER
- POINT OF CONNECTION NEW TO EXISTING

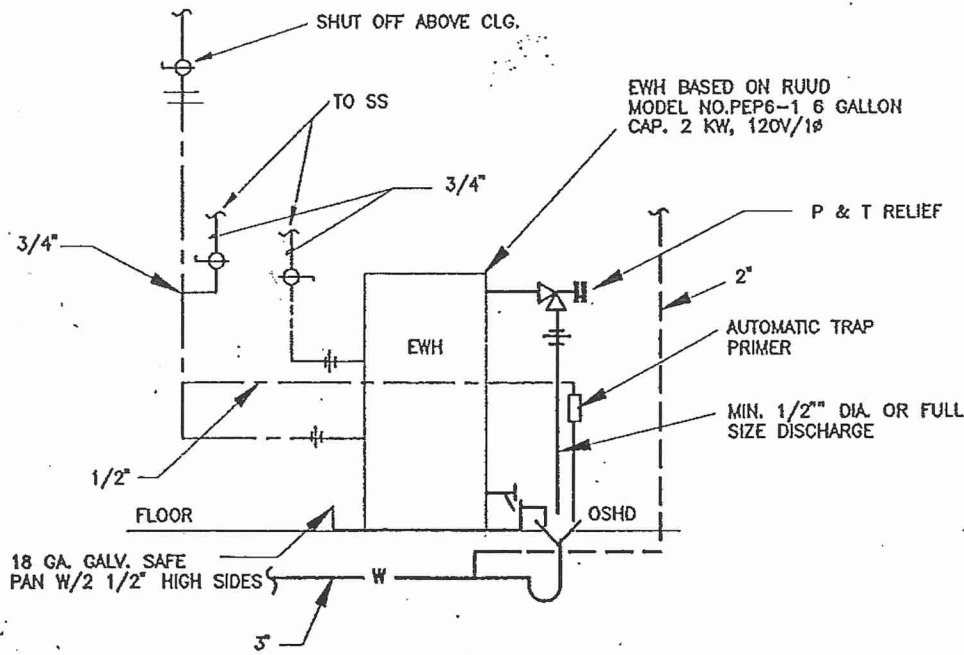
PLUMBING FIXTURE SCHEDULE				
SYMBOL	DESCRIPTION	SIZE, CW	SIZE, HW	WALL WASTE
L-1	LAVATORY, WALL MOUNTED WITH CARRIER, WHITE ENAMELED CAST IRON, KOHLER K-2861, HUDSON; BRADLEY MECHANICAL METERING FAUCET 90-75, 4" CENTERSET. ALL CHROME FINISH WITH ANGLE STOPS. MOUNTING HEIGHT TO HAVE MAX RIM HEIGHT OF 28".	1/2	1/2	1-1/2
L-2	SAME AS L-1, BUT MOUNTING HEIGHT TO HAVE A MAX. RIM HEIGHT OF 31"	1/2	1/2	1-1/2
L-3	SAME AS L-1, BUT, INSTALLATION TO COMPLY W/ADA REQUIREMENTS. PROVIDE OFFSET TAIL PIECE & INSULATION WITH VINYL JACKET FOR ALL EXPOSED PIPING BELOW LAVATORY. MOUNTING HEIGHT TO HAVE MAX. RIM HEIGHT OF 34".	1/2	1/2	1-1/2
WC-1	WATER CLOSET, 1.5 GAL/FLUSH, ELONGATED BOWL, FLUSH VALVE, FLOOR MOUNTED WHITE VITREOUS CHINA; CRANE 3-380E BABY BOWL WITH WHITE SOLID PLASTIC SEAT, OPEN FRONT WITH COVER. SLOAN ROYAL 113 FLUSH VALVE W/ANGLE STOP AND VACUUM BREAKER. PROVIDE SLOAN F-72-A1 TRAP PRIMER AS NEEDED. SEE PLAN	1-1/2	---	4
WC-2	WATER CLOSET, 1.5 GAL/FLUSH, ELONGATED BOWL, FLUSH VALVE, FLOOR MOUNTED WHITE VITREOUS CHINA; CRANE 3-325-E WHIRLTON WITH WHITE SOLID PLASTIC SEAT, OPEN FRONT WITH COVER. SLOAN ROYAL 113 FLUSH VALVE W/ANGLE STOP AND VACUUM BREAKER. PROVIDE SLOAN F-72-A1 TRAP PRIMER AS NEEDED. SEE PLAN	1-1/2	---	4
WC-3	WATER CLOSET, 1.5 GAL/FLUSH, ELONGATED BOWL, FLUSH VALVE, FLOOR MOUNTED, WHITE VITREOUS CHINA; CRANE 3H-701E HYMONT WITH WHITE SOLID PLASTIC SEAT, OPEN FRONT WITH COVER. SLOAN ROYAL 113 FLUSH VALVE W/ANGLE STOP AND VACUUM BREAKER, ADA COMPLIANT. PROVIDE SLOAN F-72-A1 TRAP PRIMER AS NEEDED. SEE PLAN	1-1/2	---	4
U-1	URINAL, ELKAY EUH-4814-C. 14 GAUGE STAINLESS STEEL MULTIPLE STATION URINAL. SLOAN ROYAL 186-1 FLUSH VALVE W/ANGLE STOP AND VACUUM BREAKER, ADA COMPLIANT. INTEGRAL HOOD TO BE A FLAT HOOD, CAST BRASS P-TRAP.	3/4	---	4
SERVICE SINK	SERVICE SINK. ELKAY EFS-2523-C FLOOR MOUNTED STAINLESS STEEL SERVICE SINK WITH LK-401 C.P. RIGID SPOUT MIXING FAUCET WITH VACUUM BREAKER. SPOUT WITH PAIL HOOK, WALL BRACE, AND 3/4" THREADED HOSE OUTLET, AND LK-402 HOSE.	1/2	1/2	2
F.D.	JR SMITH 2005Y-1 FLOOR DRAIN. 3" CAST IRON BODY W/ FLASHING COLLAR AND ADJUSTABLE STRAINER HEAD WITH PRIMER. CONNECT TO CLOSEST FLUSH VALVE.	1/2	1/2	2
C.O.	JR SMITH 4020SFC. ROUND NICKEL BRONZE TOP. DUCO CAST IRON CLEANOUT W/ ROUND ADJUSTABLE SCORIATED SECURED TOP. FLOOR MOUNTED.	---	---	---
2-WAY C.O.	JR SMITH .4422C WALL MOUNT CLEAN OUT WITH TAPER THREAD PLUG WITH ROUND COVER.	---	---	---
D.F.	HAWS 1005FR WALL MOUNTED STAINLESS STEEL FREEZE RESISTANT DRINKING FOUNTAIN. WITH BACK PANEL MODEL 1005FRBP, AND ACCESS PANEL.	3/4	---	2
E.W.C.	HAWS HWBFABL TWO LEVEL ELEC. WATER COOLER. ADA COMPLIANT.	3/4	---	2

WALL HUNG TOILETS

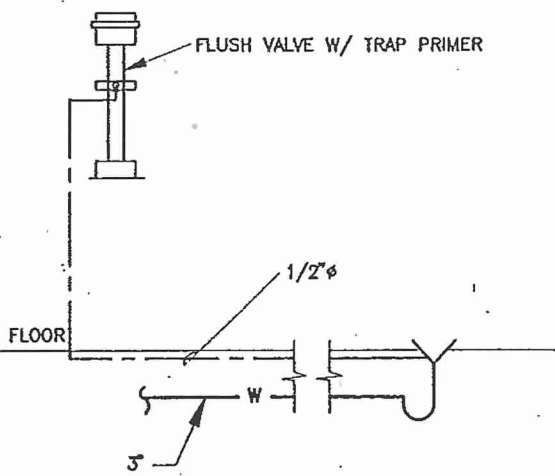
CHANGE MFG'S. →

MODIFY →

CHANGE MFG'S. →



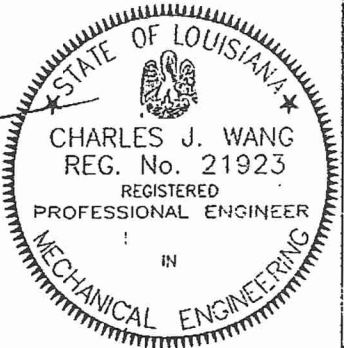
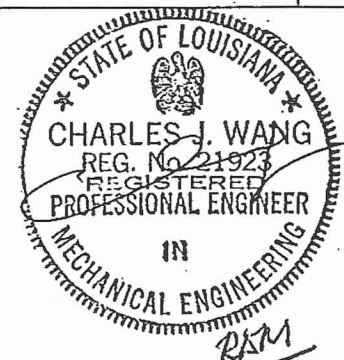
ELEC. WATER HEATER DETAIL
N.T.S.



FLUSH VALVE W/TRAP PRIMER DETAIL
N.T.S.

MECH EQUIP. SCHEDULE

- TRANSFER GRILLE: TITUS 355FL 18X14 SURFACE MOUNT, ALUMINUM FINISH MOUNT ABOVE DOORWAY. FIRE DAMPER; RUSKIN 1BDT2 18X14 THIN LINE FIRE DAMPER
 - EF-1,2,3,4: EACH EXHAUST FAN TO BE GREENHECK SDE-12-24-E. MOUNT EACH FAN IN WALL MOUNT COLLAR. PROVIDE BACKDRAFT DAMPER, GREENHECK SPEED CONTROL SWITCH, AND RUSKIN ELFB11DD 18X18 LOUVER FOR EACH. 600 CFM, 0.1" E.S.P. 120V/1Ø, 1/20 HP.
 - H-1,2,3,4: EACH HEATER TO BE REZTOR 60VC14. 120V/1Ø, 1/10 HP FAN. 2.5 GPM.
 - EWH-1: 6 GALLON, 2 KW ELECTRIC HOT WATER HEATER IN THE JANITOR'S CLOSET. WALL MOUNTED.
- ADD. ALT. #1
REPLACE FLOOR MOUNTED WATER CLOSETS WITH WALL MOUNTED WATER CLOSETS WITH CARRIERS. SUBMIT RISER DIAGRAM FOR APPROVAL.



HUSEMAN WANG, INC.
Consulting Engineers

MECHANICAL • ELECTRICAL • PLUMBING • FIRE PROTECTION

3500 N. Causeway Blvd. Suite 333 (504) 834-5393
Metairie, La. 70002 (504) 834-3028 FAX

Job No. 97013.01 Designed By G.Y.
Drawn By G.Y. Checked By C.W.

ST. MARY MAGDALEN SCHOOL
BATHROOM RENOVATIONS AND ADDITIONS
ERROL BARRON/MICHAEL TOUPS ARCHITECTS

REV. MAY 2 97

04/16/97

M-3