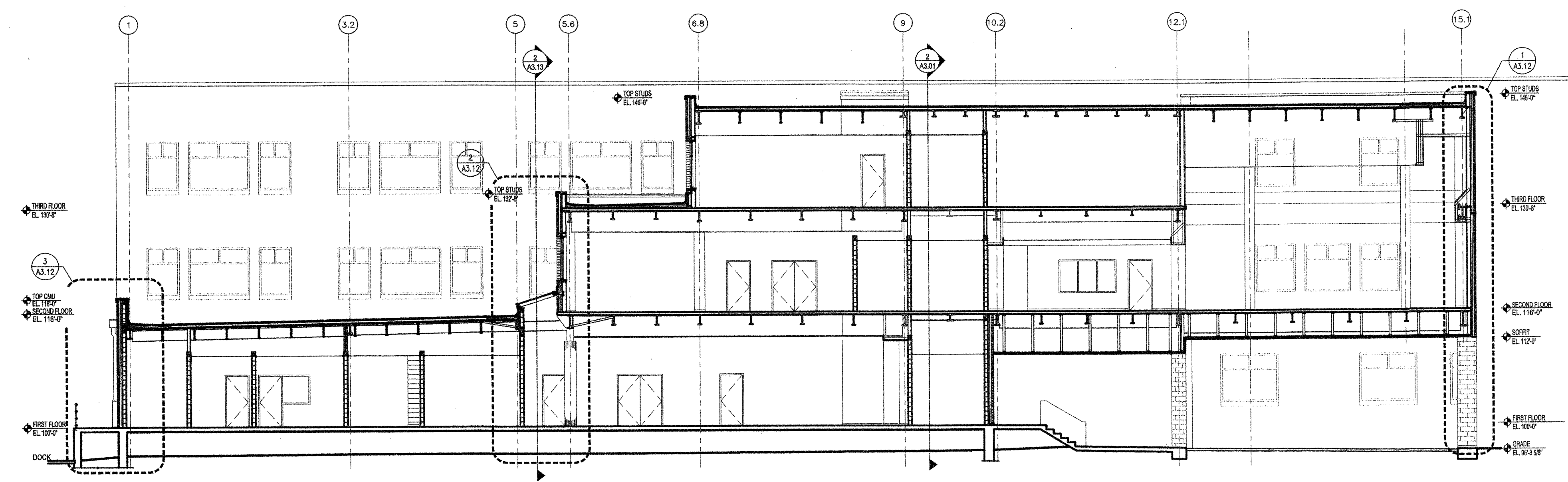
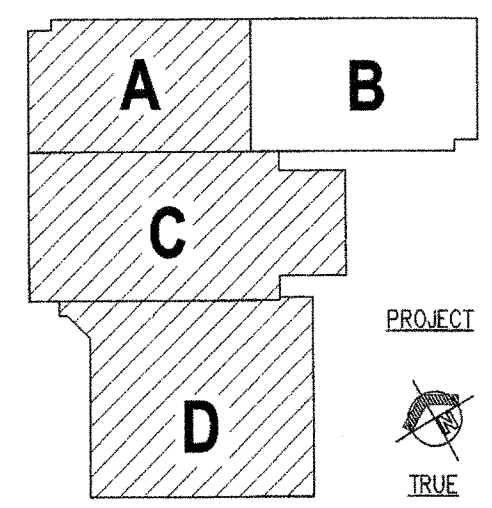


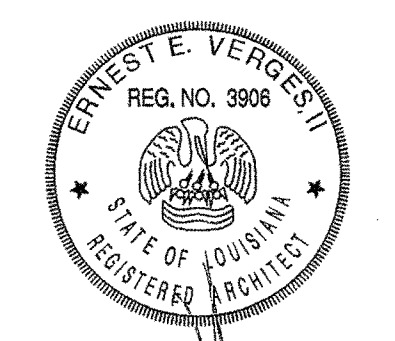
2 BUILDING SECTION - ( NORTH / SOUTH )  
A3.01 SCALE: 3/32" = 1'-0"



1 BUILDING SECTION - ( EAST / WEST )  
A3.01 SCALE: 3/32" = 1'-0"



KEY PLAN



**NEW 3 SECTION ELEMENTARY SCHOOL  
AT FISK-HOWARD SCHOOL  
RECOVERY SCHOOL DISTRICT**

211 S. LOPEZ STREET NEW ORLEANS, LOUISIANA 70119

DATE ISSUED:	7 DECEMBER, 2012
REVISED:	
REVISED:	
REVISED:	
REVISED:	
REVISED:	
DRAWN BY:	RPB
CHECKED BY:	DGR, JFM
PHASE:	

BID DOCUMENTS

11085

TITLE:  
BUILDING SECTIONS  
OVERALL

SHEET:

A3.01