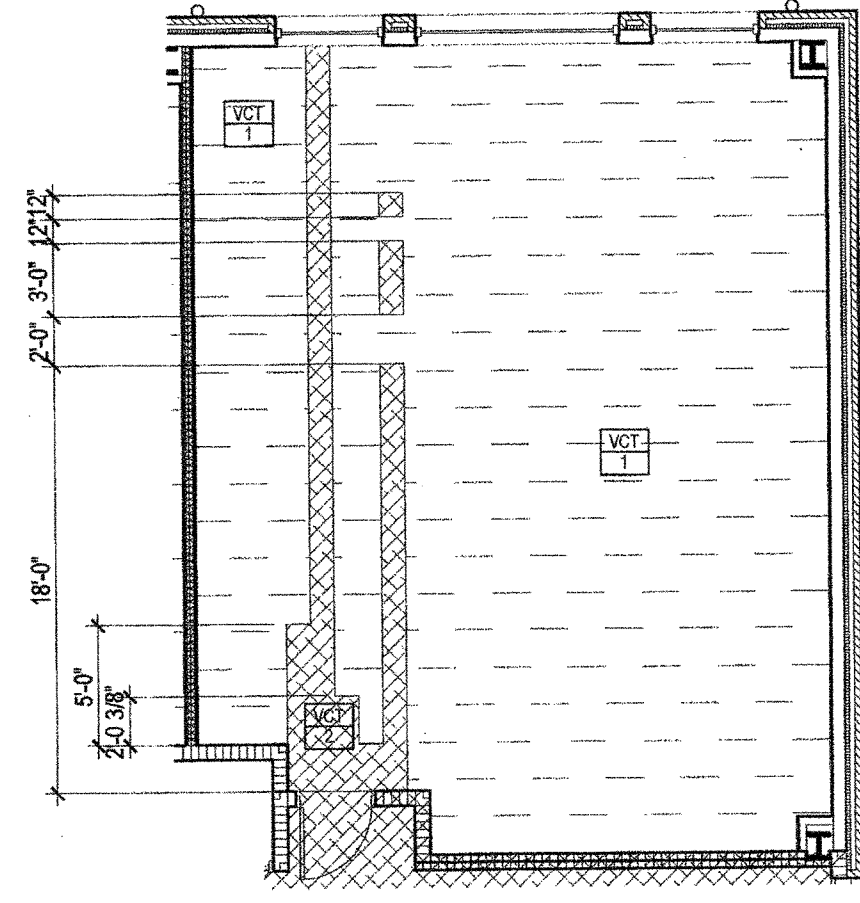
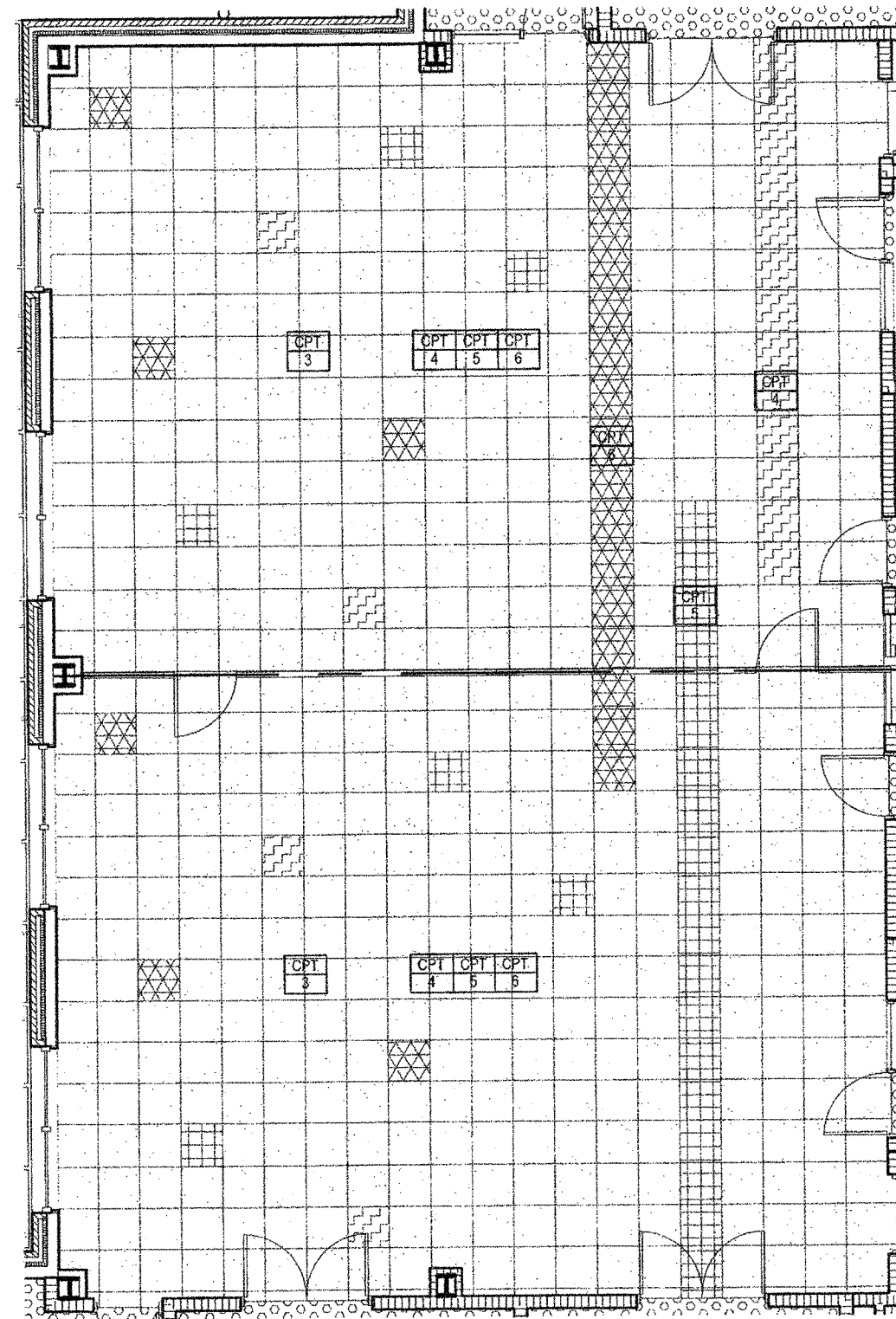


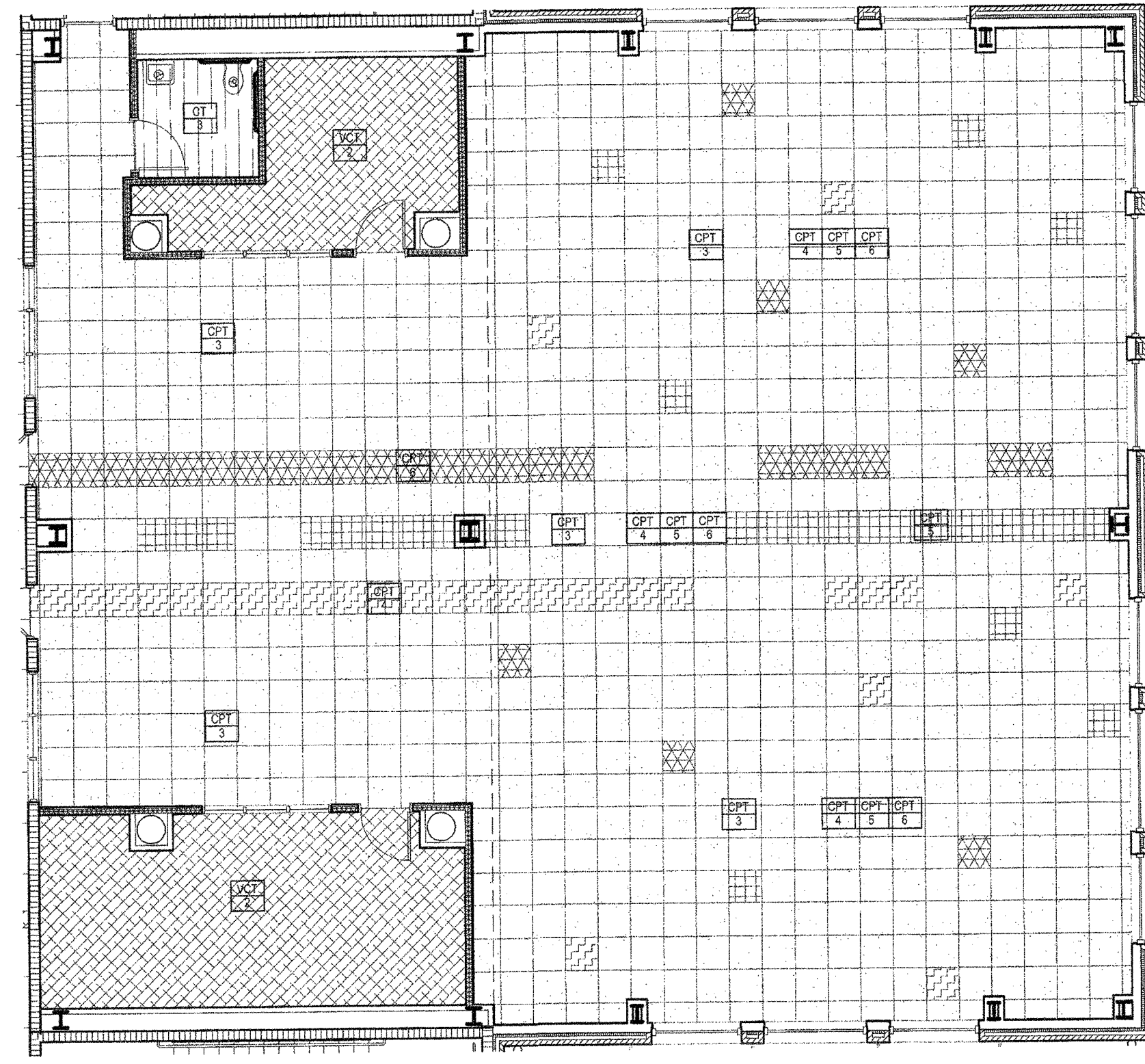
4 TYPICAL ORANGE CLASSROOMS  
A6.07 SCALE: 1/8" = 1'-0"



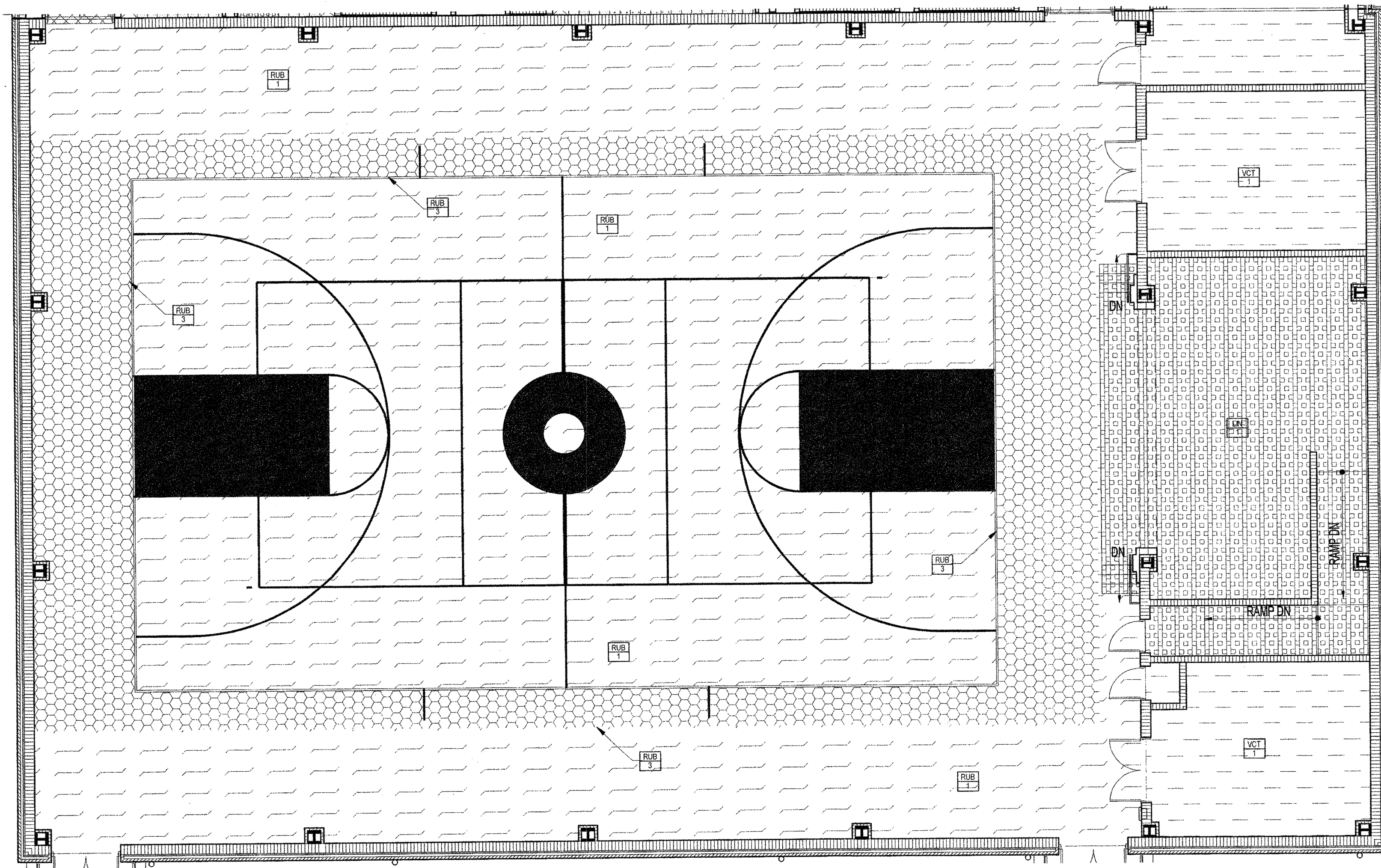
3 TYPICAL GREEN CLASSROOMS  
A6.07 SCALE: 1/8" = 1'-0"



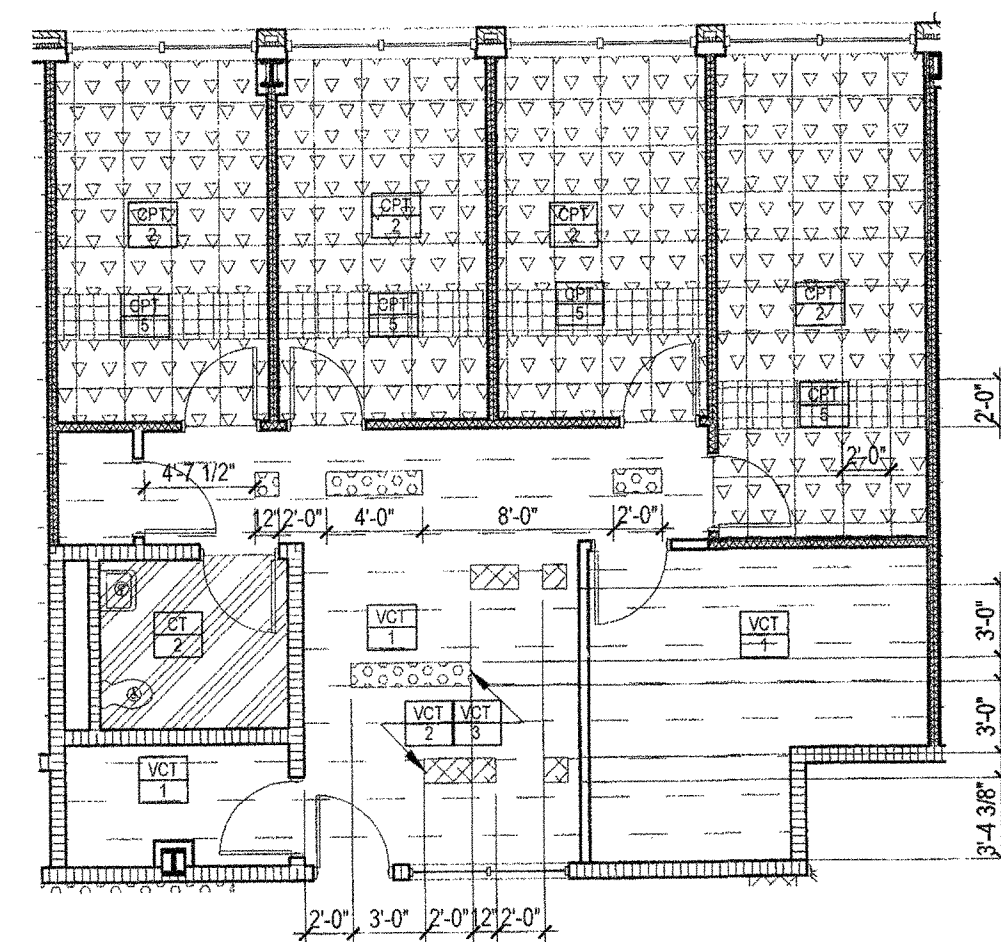
2 MUSIC/CHOIR ROOM  
A6.07 SCALE: 1/8" = 1'-0"



1 MEDIA ROOM  
A6.07 SCALE: 1/8" = 1'-0"



6 GYMNASIUM  
A6.07 SCALE: 1/8" = 1'-0"



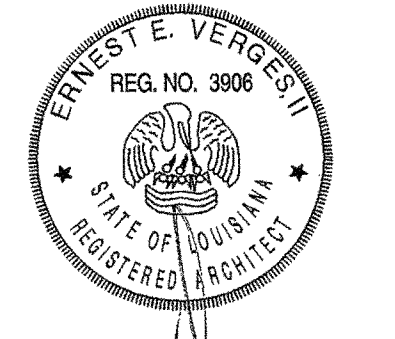
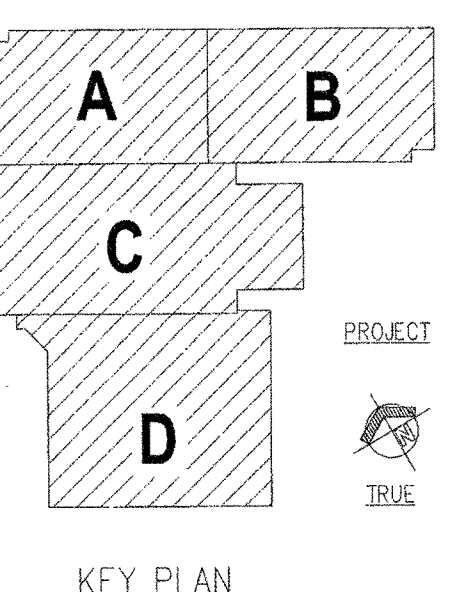
5 2ND FLOOR RECEPTION AND ADMIN. OFFICES  
A6.07 SCALE: 1/8" = 1'-0"

GENERAL NOTES

1. ALL MECHANICAL AND ELECTRICAL ROOMS SHALL BE UNFINISHED.
2. ALL AREAS WITH CERAMIC TILE FLOORS/ WALLS SHALL HAVE CERAMIC TILE CORNER BASE @ THE SAME SIZE AND FINISH AS THE CERAMIC WALL TILES.
3. ALL ROOMS AREAS WITH CERAMIC TILE WALLS AND FLOORS SHALL HAVE MOBILE FIREPROOFING AND SHALL BE INSTALLED UNDER DOORS AND SCRIBED TO FRAME PROFILE.
4. PROVIDE METAL TRANSITION STRIPS UNDER DOORS AT ROOMS THAT DO NOT HAVE CERAMIC TILE.
5. ALL QUARRY AND CERAMIC TILE AT RESTROOMS AND FOOD SERVICE AREAS TO HAVE 1/8" NON EPDM GROUT (CONVENTIONAL GROUT AT ALL OTHER AREAS).
6. SCALED CONCRETE AT COOLERS/FREEZERS LOCATIONS A BASE FOR PRE-FABRICATED UNIT FLOORING SEE STRUCTURAL FOR NOTES.
7. FINISHES SHOWN IN ONE AREA OF A ROOM OR CORRIDOR SHALL APPLY TO THE ENTIRE ROOM UNLESS OTHERWISE NOTED.
8. FIELD CARPET TILES (OPT 1-3) ARE TO BE INSTALLED MECHANICALLY WITH THE LINE PATTERN RUNNING PARALLEL WITH THE LONGEST DIMENSION OF THE CARPET TILE ACCESS (OPT 4).
9. ALL SOLID COLORED CARPET TILES (OPT 4) ARE TO BE INSTALLED QUARTER TURNED.
10. RECESSED SLABS ARE DIMENSIONED FROM INSIDE WALL TO INSIDE WALL WITH ALL CHAIR WALL CORNERS SHOWN AT FINISH FLOOR. POLYRED STEEL WALLS OR CUT CHAIR ARE ACCEPTABLE SPACERS. REFER TO STRUCTURAL DRAWINGS FOR ADDITIONAL INFORMATION. FIELD VERIFY ALL DIMENSIONS.
11. ALL INTERIOR WALL PAINT SHALL BE AN 1/50 GRAIN FINE FINISH UNLESS OTHERWISE NOTED.
12. ALL CLASSROOM FLOOR ENTRANCE ACCESS TO BE PAINTED: PTD 4 OR 3 REFER TO FINISH PLANS.
13. RETURN TERRAZZO BASE AND ALL WALL BASE INTO DOOR OPERINGS / FRAMES.
14. ALL TRANSITIONS FROM TILE, TERRAZZO, QUARRY TILE AND CONCRETE FLOORING TO EACH OTHER AND TO OTI (ELEVATORS) FINISH MATERIALS SHALL BE MADE LEVEL BY FINISHING (GROUT BED). NON-LEVEL FINISHED SURFACES WILL NOT BE ACCEPTED.

FLOOR FINISH LEGEND	
[Pattern]	TER-1
[Pattern]	TER-2
[Pattern]	TER-3
[Pattern]	TER-4
[Pattern]	VCT-1
[Pattern]	VCT-2
[Pattern]	VCT-3
[Pattern]	CT-1
[Pattern]	CT-2
[Pattern]	CT-3
[Pattern]	CPT-1
[Pattern]	CPT-2
[Pattern]	CPT-3
[Pattern]	CPT-4
[Pattern]	CPT-5
[Pattern]	CPT-6
[Pattern]	CPT-7
[Pattern]	RUB-1
[Pattern]	RUB-2
[Pattern]	RUB-3
[Pattern]	LIN-1

FINISH LEGEND		
<b>FLOORS:</b>	<b>WALLS:</b>	<b>BASE:</b>
[Symbol] VINYL COMPOSITION TILE	[Symbol] PAINTED VERTICAL/ORNAMENTAL SURFACE UNLESS NOTED OTHERWISE	[Symbol] 6" X 1" TERRAZZO BASE
[Symbol] CARPET TILE (VINYL-CLAY CARPET WALL-CUT CARPET TO BE HELD OFF FROM FACE OF WALL BASE MATERIAL)	[Symbol] VINYL WALLCOVERING	[Symbol] 5" X 3" QUARRY TILE BASE
[Symbol] NON-SLIP QUARRY TILE	[Symbol] 6" X 6" CERAMIC WALL TILE GRADED	[Symbol] 1/2" GLAZED CERAMIC TILE DOVE BASE
[Symbol] TERRAZZO FLOORING	<b>EQUIPMENT CABINETS:</b>	[Symbol] RUBBER BASE
[Symbol] EPDM UNGLAZED CERAMIC TILE	[Symbol] PLASTIC LAMINATE (COUNTERTOP)	
[Symbol] SCALED CONCRETE		



**NEW 3 SECTION ELEMENTARY SCHOOL  
AT FISK-HOWARD SCHOOL  
RECOVERY SCHOOL DISTRICT**

211 S. LOPEZ STREET NEW ORLEANS, LOUISIANA 70119

DATE ISSUED: 7 DECEMBER, 2012  
REVISED:  
REVISED:  
REVISED:  
DRAWN BY: SMB, HML  
CHECKED BY: DGR, JFM  
PHASE:

BID DOCUMENTS

11085

TITLE:  
ENLARGED FLOOR FINISH PLANS

SHEET:  
A6.07