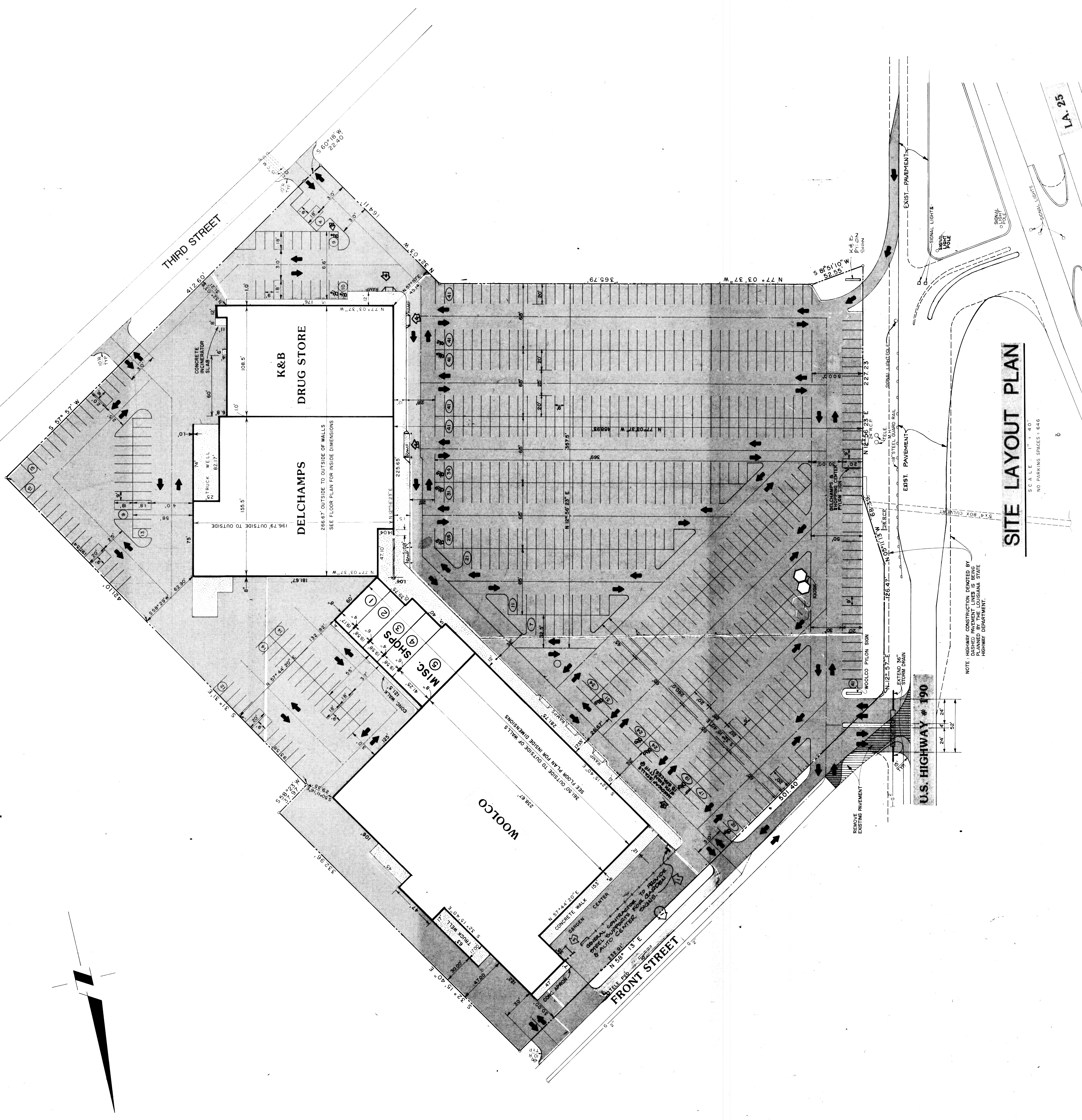




- 1. ADD NO. 4, 10/24/2001, REVISED RAMP @ DELCHAMPS & K & B.
- 2. ADD NO. 3, 12/16/2001, ADD HANDICAPED PARKING SPACES.
- 3. ADD NO. 2, 10/26/2001, REEF FIRE BULLDOZER DRIVES REVERSE.
- 4. ADD NO. 1, 8/18/2001, GRADERS & AUTO CENTER ISLAND SHOWN.

MONROE, LA., 12/12/2001, 5:00 PM



SITE LAYOUT PLAN

SCALE: 1" = 40'
NO PARKING SPACES - 666

NOTE: HIGHWAY CONSTRUCTION PERMITTED BY PLANNED BY THE LOUISIANA STATE HIGHWAY DEPARTMENT.

U.S. HIGHWAY # 190

LA-25

LA-25