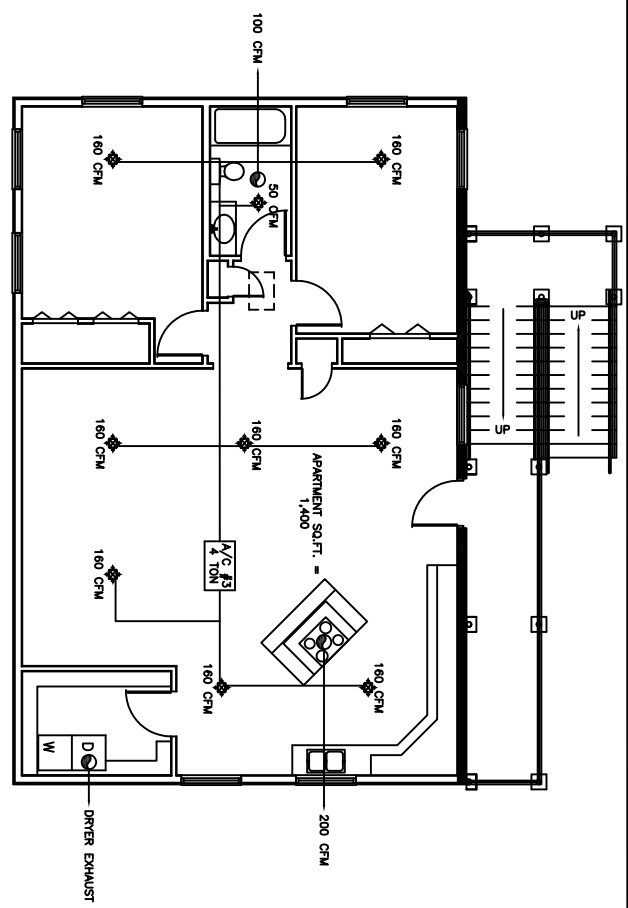


LEGEND
 - FIRE DAMPER
 - SUPPLY AIR
 - EXHAUST FAN

OFFICE 1st FLR. MECHANICAL PLAN
 SCALE: 1/4"=1'-0"

A/C UNIT SCHEDULE - OFFICE BLDG.

NO.	TOTAL BTU	CFM	O.A.	HEAT ELEC	VOLTAGE	MECA	CKT	BKBR	COMMENTS
1	48,000	1,800	200	5 KW	240V, 3Ø	-	-	PL-1 (1,3)	YORK OWNER
2	36,000	1,200	150	5 KW	240V, 3Ø	-	-	PL-2 (1,3)	(VERIFY WITH OWNER)
3	48,000	1,800	200	5 KW	240V, 3Ø	-	-	PL-3 (1,3)	
4									



OFFICE 2nd FLR. MECHANICAL PLAN
 SCALE: 1/4"=1'-0"

HVAC NOTES

- CONCEAL ALL DUCTWORK TO BE UL-18H, CLASS 1, FIRE-RATED DUCTWORK. DUCTS SHALL BE INSTALLED PER SMACNA STANDARDS & EQUIVALENT SECTION 19 500.
- EXPOSED DUCTWORK TO BE GALVANIZED SHEET METAL PER SMACNA STANDARDS. LINE WITH INSULATION COVERED 1.0" 1/2 CLASS 1, AIR DUCT INSULATION.
- ROUND FLEXIBLE DUCT TO BE UL-18H, CLASS 1, AIR DUCT MATERIALS.
- DUCT SIZES SHOWN ARE CLEAR INSIDE DIMENSIONS.
- IN ALL SYSTEMS OVER 2000 CFM AND LESS THAN 15,000 CFM, SMOKE DETECTORS SHALL BE INSTALLED IN ACCORDANCE WITH NFPA 72 IN THE RETURN DUCT STOP THE FAN. THE AIR THROUGHOUT THE DUCT SHALL BE MONITORED TO STOP THE FAN.
- PROVIDE UL LISTED 1/2" PRESSURE IN RETURN AIR OF EACH SYSTEM UNDER 2000 CFM TO SHUT DOWN THE FAN IN THE EVENT OF FIRE.
- PROVIDE UL LISTED FIRE DAMPERS WHERE REQUIRED AT ALL DUCT PENETRATIONS AND INTEGRATED ASSEMBLIES AND WHERE REQUIRED BY CODE, INCLUDING OUTSIDE FEET OF AIR HANDLING UNITS.
- CONDENSATE DRAINS TO BE PVC PIPE RUN TO PLUMBERS P-TAP WITHIN FIVE FEET OF AIR HANDLING UNITS.
- ALL AIR HANDLING SYSTEMS TO BE BALANCED TO ASSURE PROPER AIR FLOWS PER PLANS.
- ALL THERMOSTATS TO BE AUTOMATIC DAMPERS WITH HEAT SWITCH.
- EXHAUST FAN EQUAL TO BRONX MODEL NO. 100 CF, OR EQUAL. FAN SHALL BE CONTROLLED BY A SWITCH ON THE WALL AT THE SAME LOCATION AS LIGHT SWITCH.
- PROVIDE AND INSTALL WATER PROOF GULCH VENT IN PROPER ROOF LOCATION FOR PLUMBING FUTURE EXHAUST.
- ALL SUPPLY AIR VENTS SHALL BE EQUIPPED WITH AIR CONTROL DAMPERS.
- LOCATE OUTDOOR UNITS AS SHOWN ON ARCH. DIMS.
- RESPONSE TIMES SHALL BE SHOWN BY USER MANUFACTURER AND INSTALLED ACCORDING TO MANUFACTURER'S INSTRUCTIONS.
- FRESH AIR SHALL BE SUPPLIED EACH AIR HANDLER THROUGH EXTERIOR WALL DUCT SUPPLIED WITH A CONTROL DAMPER.
- INSTALL FIRE DAMPERS WHERE S.A. & R.A. DUCTS PENETRATE 1 HOUR RATED CEILING.
- ALL ELECTRICAL, MECHANICAL, AND PLUMBING PENETRATING FIRE WALLS SHALL BE WITH A MINIMUM RATING OF RESISTING THE ASSAULT OF FLAMING HOT GASES WHEN TESTED IN ACCORDANCE WITH ASTM-E814.

PLANET STORAGE

DAMMON ENGINEERING, INC.
 ARCHITECTS - ENGINEERS

2000 OLD SPANISH TRAIL, STE 100 986-849-5832 SLIDELL, LA. 70468
 DAMMONENGINEERING.COM

OFFICE MECHANICAL PLAN

JEFF BRELAND
 64287 HWY. 41
 PEARL RIVER, LOUISIANA

SCALE(S) NOTED

FILE: _____

JOB NO. 1757

DATE: 6-19-06

SHEET 19

M-1

OF 27