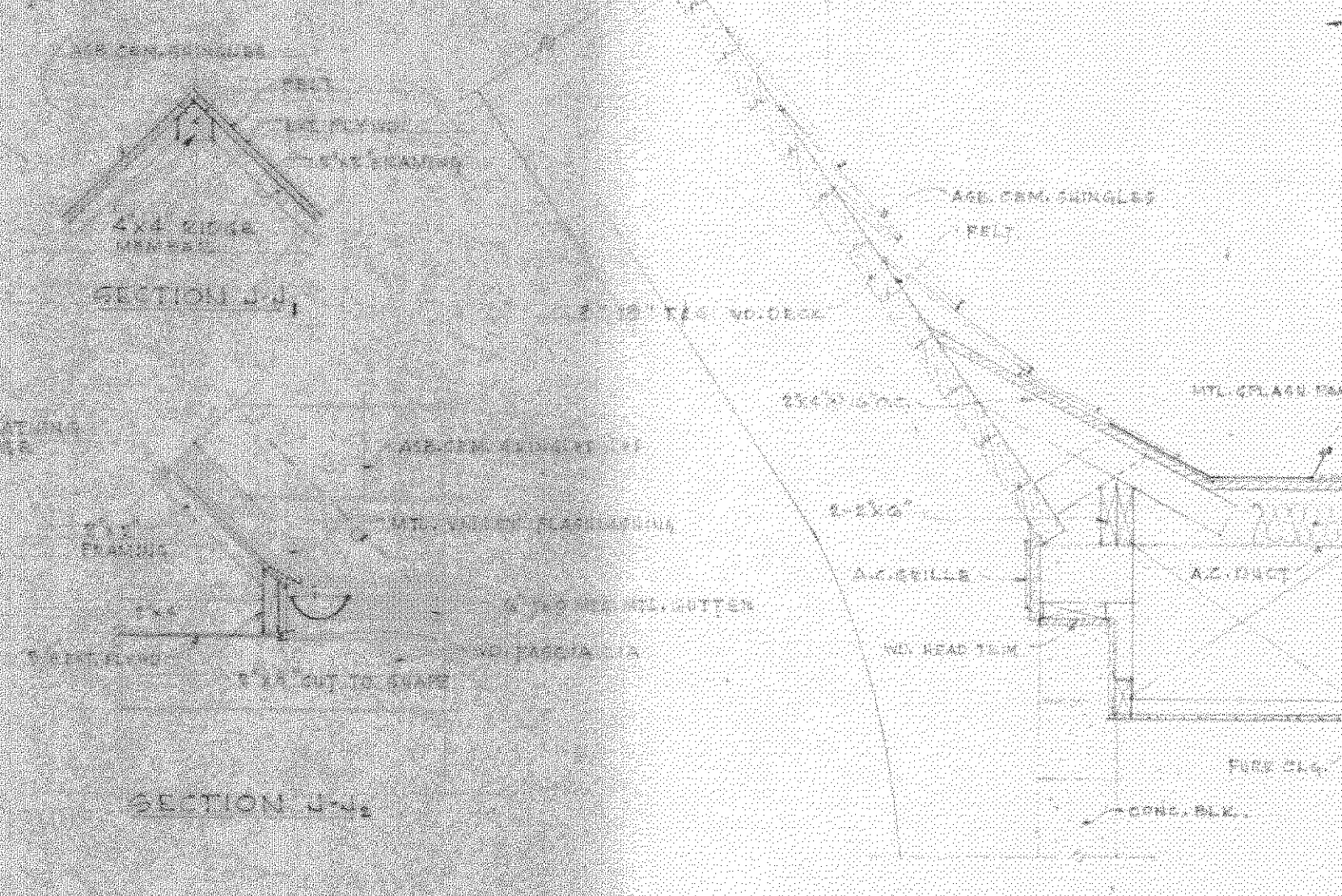
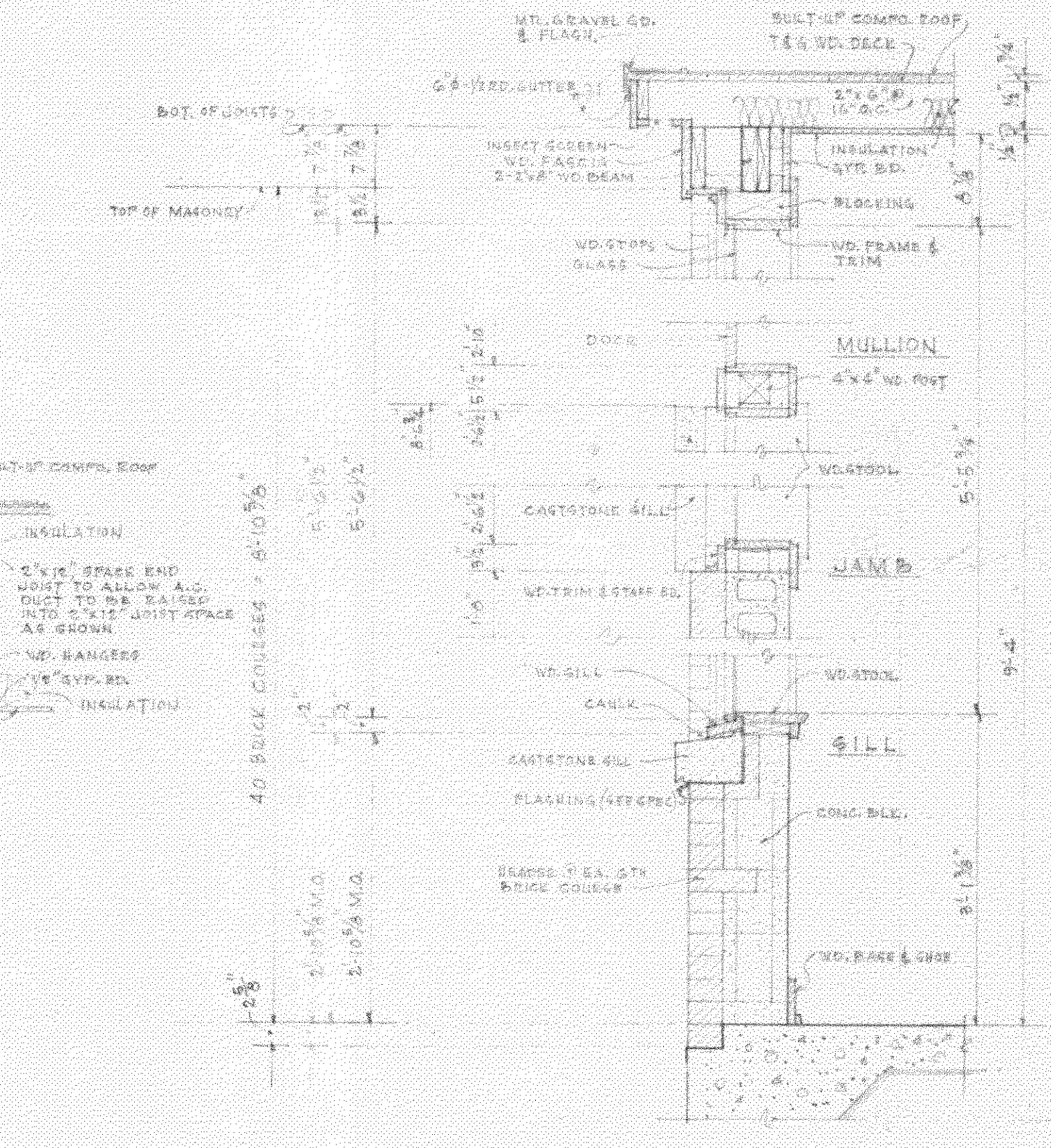


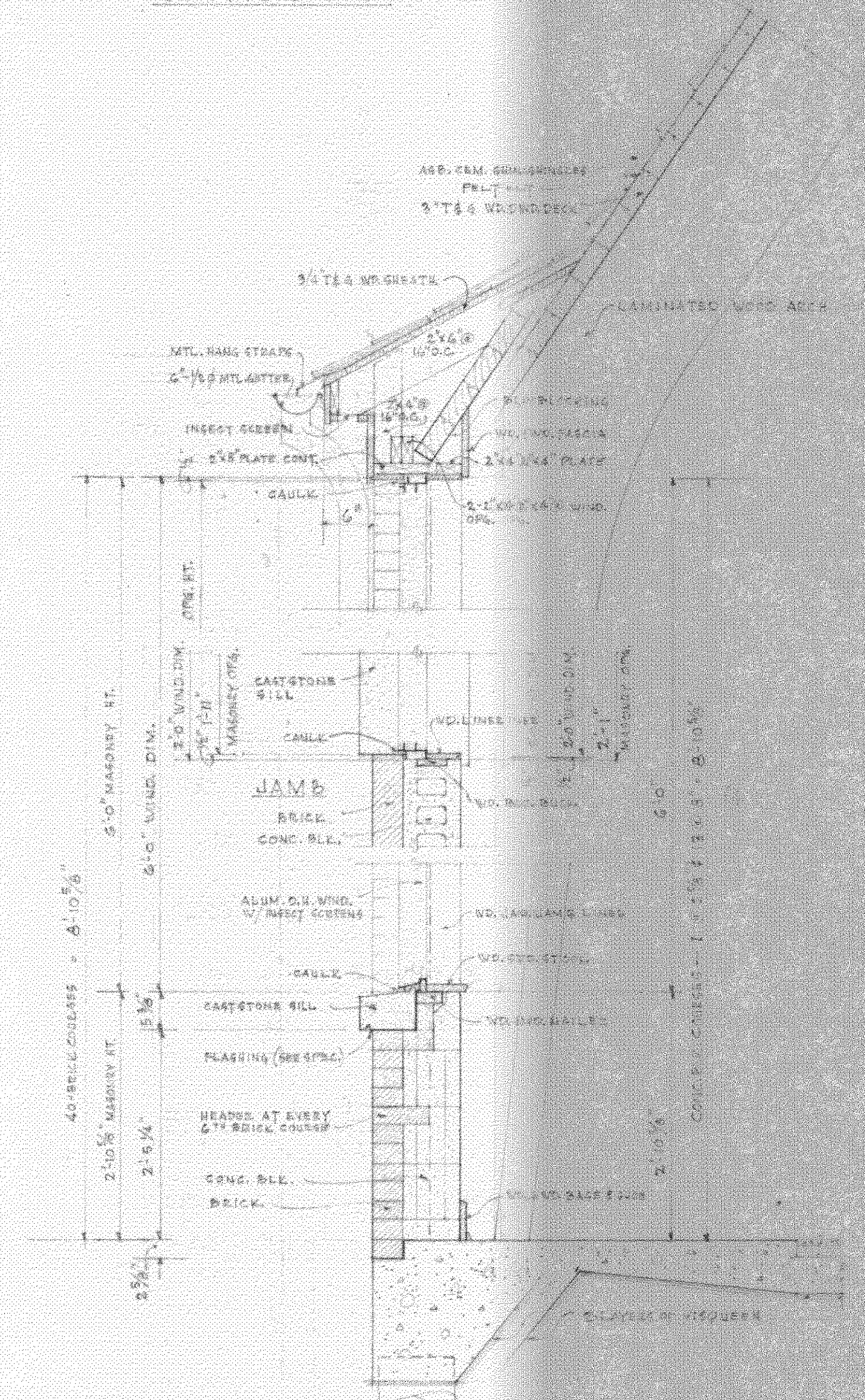
SECTION J-J



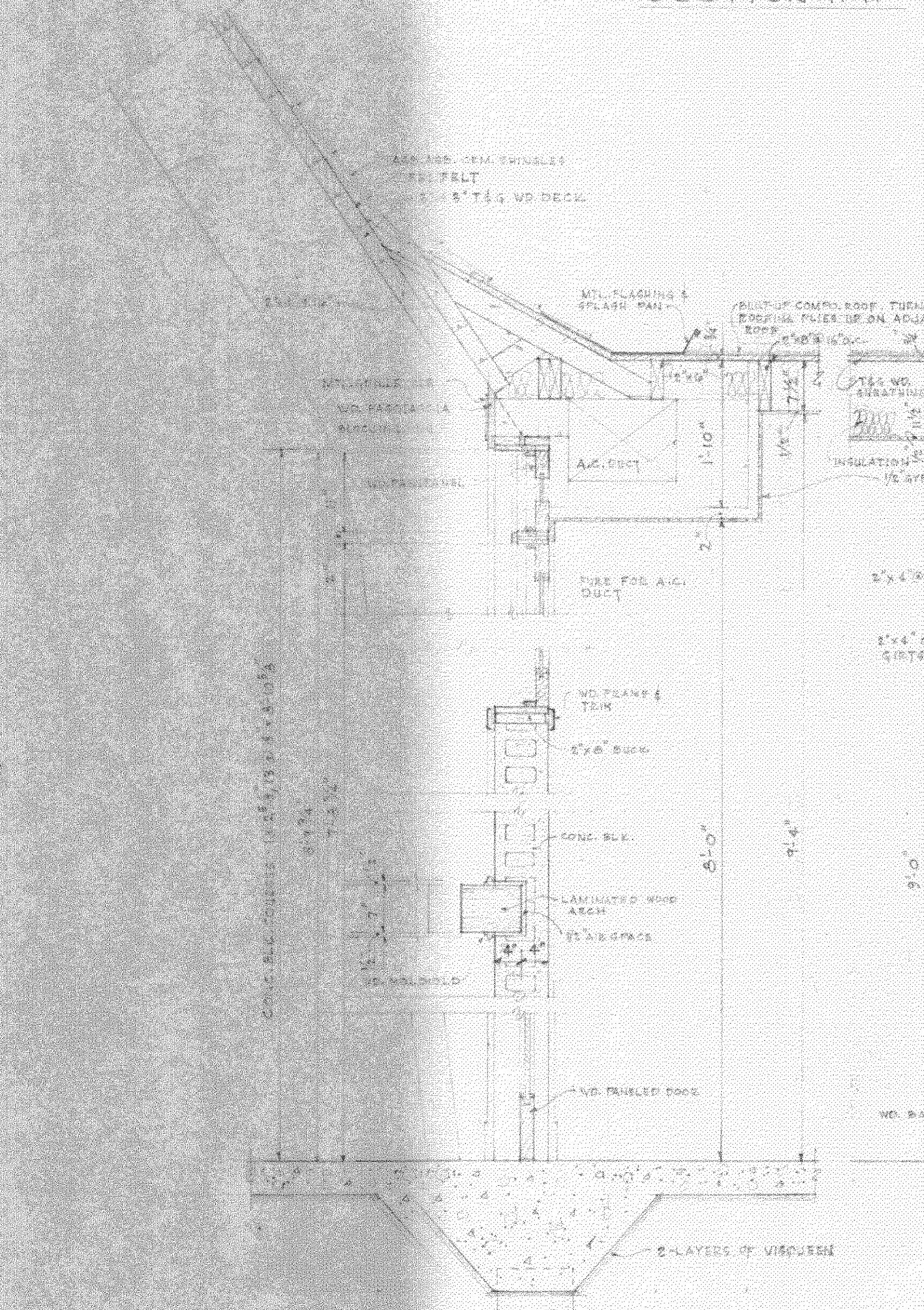
SECTION H-H



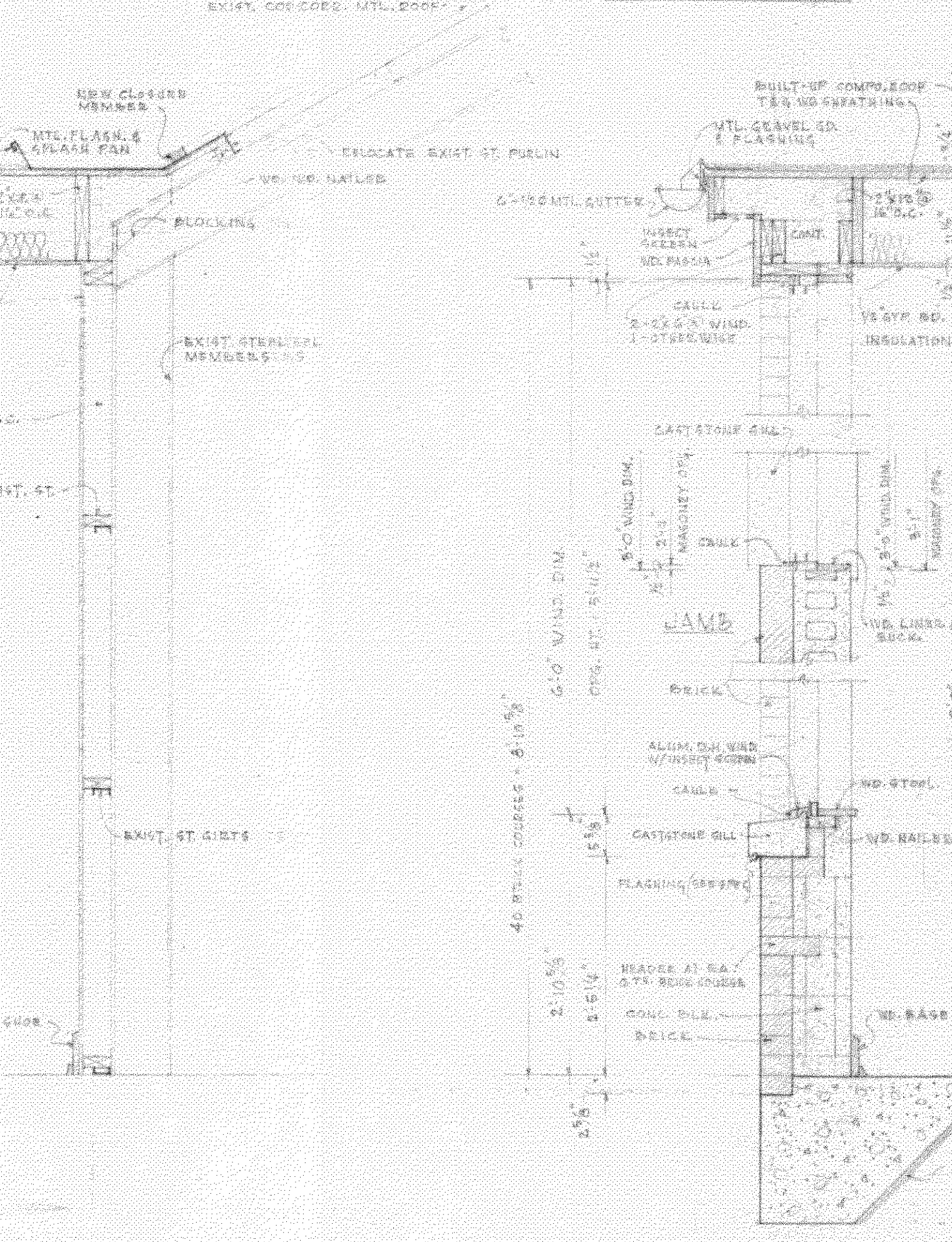
SECTION G-G



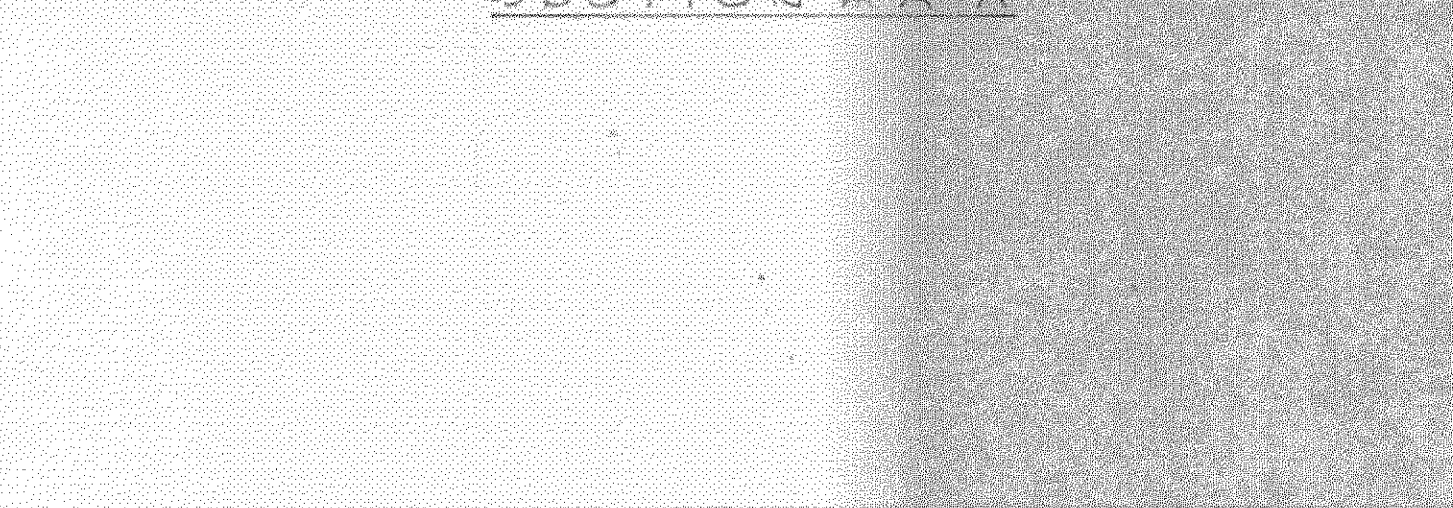
SECTION A-A



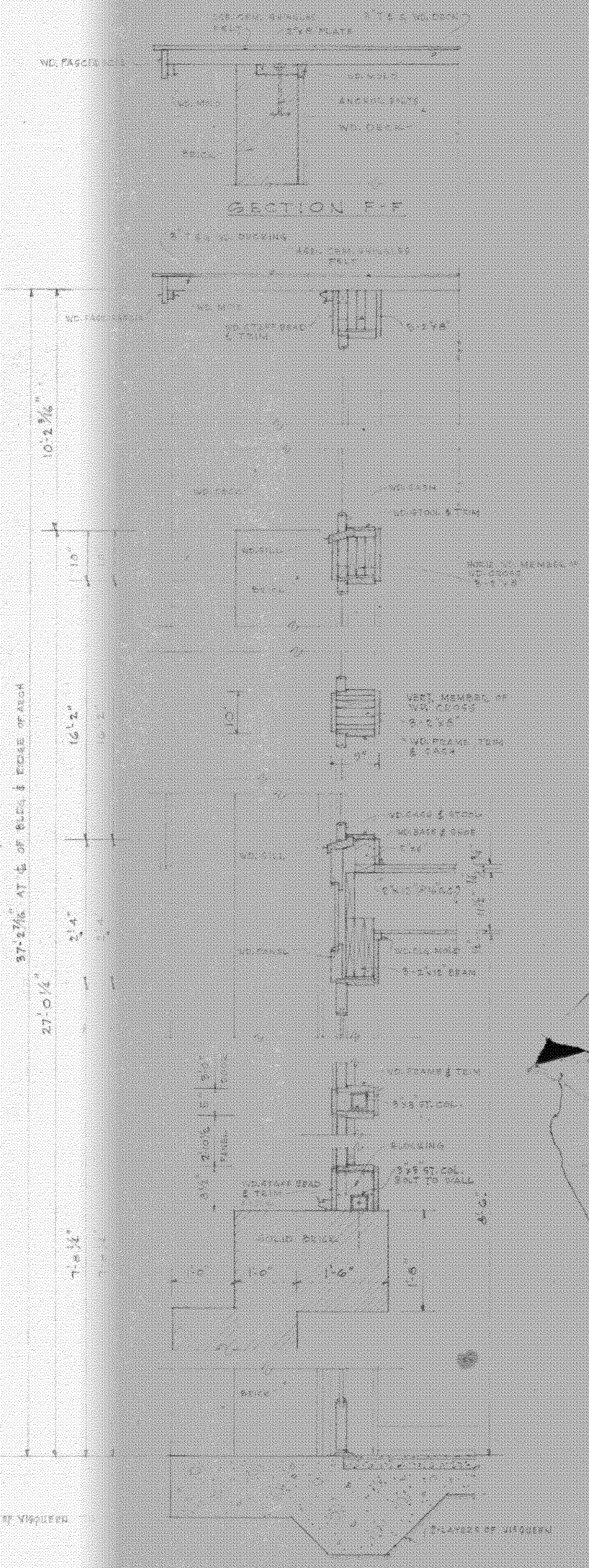
SECTION B-B



SECTION C-C



SECTION D-D



SECTION E-E

NOTE: SEE STRUCTURAL SHT. S-1 FOR CONC. GLAB. & FOOTING DETAILS

SCALE 3/4" = 1'-0"

CHURCH BUILDING FOR	COMM. NO.
CHRIST EPISCOPAL CHURCH	885
GLIDELL, LOUISIANA	DATE:
	22 APRIL 1950
	REVISED:
FREDET AND WOLFEN, ARCHT'S	SHEET NO.
910 CHARTER ST. NEW ORLEANS, LA.	A4-4