

## GENERAL DEMOLITION NOTES

PLANS DO NOT ATTEMPT TO SHOW ALL ELECTRICAL DEMOLITION ITEMS. UNLESS OTHERWISE NOTED, THE DEVICES ARE SHOWN FOR INFORMATIONAL PURPOSES. FIELD VERIFY ALL DEMOLITION ITEMS AND PROVIDE REMOVAL OF ALL DEVICES ACCORDINGLY. ALL ELECTRICAL DEVICES AND CIRCUITRY PERTAINING TO THE HVAC, MECHANICAL, AND PLUMBING SYSTEMS SHALL REMAIN.

REMOVE ALL LIGHT FIXTURES, EXIT LIGHTS, RECEPTACLES, TELEPHONE, DATA, FIRE ALARM, ETC. IN THE DEMOLITION AREAS. REMOVE CONDUIT/WIRE BACK TO PANEL(S) AND LABEL ALL ASSOCIATED BREAKERS AS "SPARE". CARE SHALL BE TAKEN TO MAINTAIN CIRCUIT CONTINUITY TO ELECTRICAL DEVICES THAT SHALL REMAIN. PROVIDE NEW CONDUIT/WIRE AS REQUIRED.

DAMAGE TO EXISTING MATERIALS/EQUIPMENT SHALL BE REPAIRED AT NO ADDITIONAL COST TO OWNER. RE-SUPPORT ANY REMAINING CONDUIT OR DEVICE THAT WAS SUPPORTED BY WALLS/MILLWORK BEING REMOVED.

NON-DEMOLITION AREAS: DEMOLITION WORK SHALL NOT AFFECT AREAS NOT INCLUDED IN DEMOLITION. CONTRACTOR SHALL BE RESPONSIBLE FOR THE CONTINUITY OF ALL SERVICES IN NON-DEMOLITION AREAS. MAINTAIN SERVICE BY EXTENDING, RE-ROUTING AND/OR RECONNECTING ANY CIRCUITS AFFECTED BY DEMOLITION. PROVIDE ADDITIONAL CONDUIT/WIRE AS REQUIRED TO MAINTAIN SERVICE. CIRCUITS IN NON-DEMOLITION AREAS THAT ARE CONNECTED TO DEMOLISHED PANELS AND/OR CIRCUITS SHALL BE RE-CIRCUITED TO THE EXISTING PANELS.

FIELD INVESTIGATE THE EXISTING ELECTRICAL INSTALLATION. ALL EXISTING INSTALLATIONS IN THE RENOVATION AREAS THAT ARE TO REMAIN BUT ARE NOT CURRENTLY IN COMPLIANCE WITH CURRENT CODES SHALL BE CORRECTED, INCLUDING BUT NOT LIMITED TO THE FOLLOWING:

UN-SUPPORTED CONDUIT AND JUNCTION BOXES LAYING ON TOP OF CEILING TILES, CONDUIT AND/OR JUNCTION BOXES SUPPORTED ONLY BY TIE-WIRE - RAISE AND SUPPORT CONDUIT WITH STRAP PER SPECS. PROVIDE NEW CONDUIT/WIRE AS REQUIRED.

FIXTURES IMPROPERLY SUPPORTED OR INADEQUATELY SUPPORTED DEVICE BOXES - PROVIDE PROPER SUPPORT PER N.E.C.

ALL EXISTING ABANDONED AND/OR UN-USED CONDUIT/WIRE, SWITCHES/STARTERS, JUNCTION BOXES, COMMUNICATION SYSTEM AND DEVICES IN PROJECT AREAS SHALL BE REMOVED BACK TO PANELS AND/OR CONTROL PANELS. ALL ITEMS DEMOLISHED SHALL BE REMOVED BACK TO PANELS AND/OR CONTROL PANELS.

PRIOR TO STARTING OF DEMOLITION, CONFER WITH ARCHITECT FOR GENERAL INSTRUCTIONS.

SEAL ALL PENETRATIONS IN EXISTING FLOORS, CEILINGS, WALLS, ETC., WHERE ELECTRICAL EQUIPMENT, DEVICES, CABLING, ETC., ARE REMOVED TO SATISFACTION OF ARCHITECT.

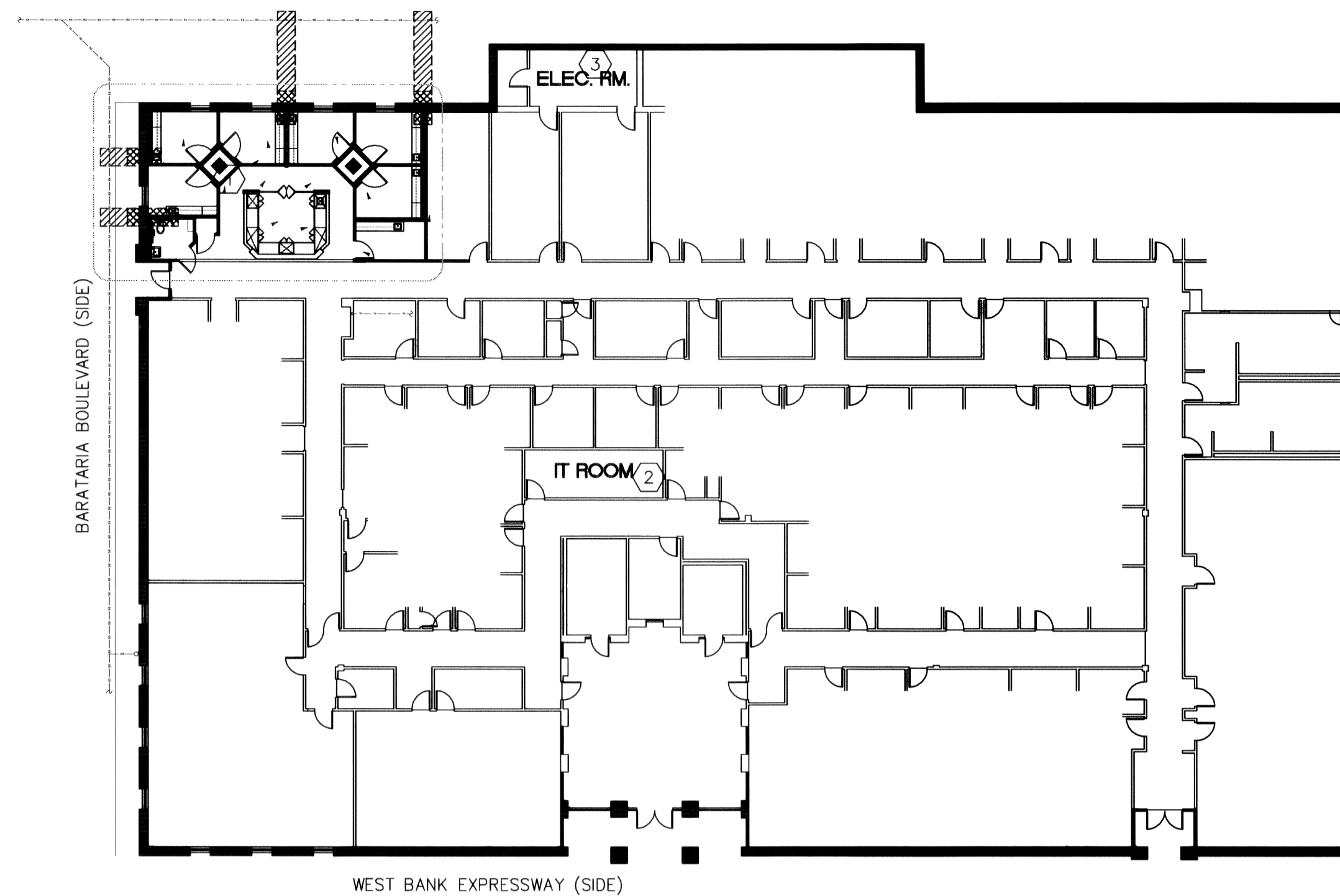
DETERMINE ALL EXISTING AND NEW DEVICE CIRCUIT DESIGNATIONS ON THE RECORD DRAWINGS.

WHERE REMOVAL OF EXISTING ELECTRICAL APPARATUS INTERRUPTS A CIRCUIT SERVING EXISTING DOWNSTREAM DEVICES OR FIXTURES TO REMAIN, MAINTAIN CIRCUIT CONTINUITY AS REQUIRED. PROVIDE NEW JUNCTION BOXES, PULLBOXES, RACEWAYS, WIRING, ETC., AS REQUIRED.

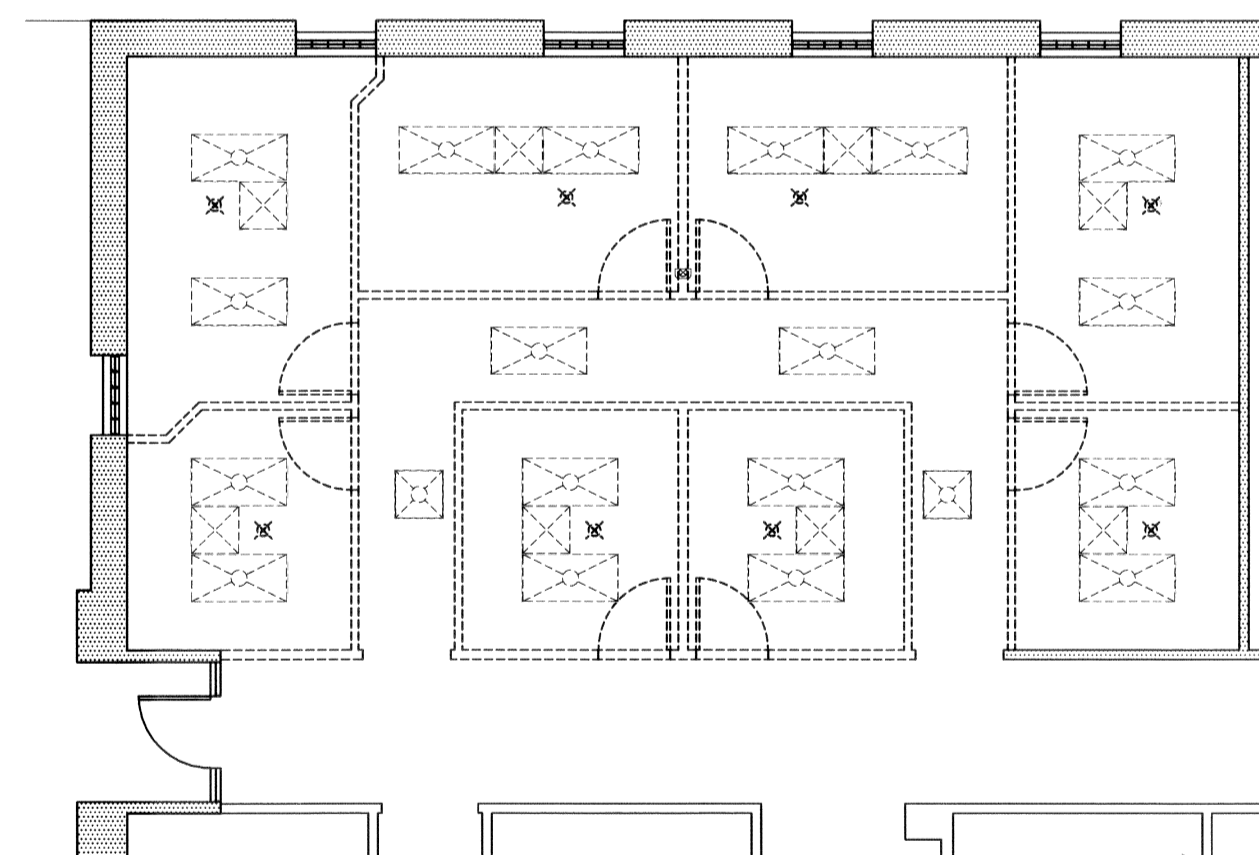
WHERE AN EXISTING DEVICE OR LIGHT FIXTURE IS REMOVED BUT THE RACEWAY AND BOX REMAINS FOR CIRCUIT CONTINUITY, PROVIDE AN APPROPRIATE BLANK COVER PLATES OF MATERIAL AND FINISH TO MATCH THE COVER PLATES ON THE DEVICES IN THAT ROOM.

WHERE AN EXISTING ELECTRICAL DEVICE, EQUIPMENT, ETC., IS BEING REMOVED FROM AN EXISTING WALL AND THAT WALL IS TO REMAIN, CONTRACTOR SHALL PATCH EXISTING WALL TO ARCHITECTS SATISFACTION.

SEAL ALL EXISTING PENETRATIONS THRU FIRE RATED WALLS, FLOORS, ETC. WITH FIREPROOFING MATERIAL EQUAL OR GREATER THAN FIRE RATING OF WALLS, FLOORS, ETC.



**1**  
E-1 **DEMOLITION / REMEDIATION PLAN**  
scale: 1" = 20'-0"  
NORTH



**2**  
E-1 **ENL. DEMO./REM. PLAN**  
scale: 1/8" = 1'-0"  
NORTH

## GENERAL NOTES THIS SHEET

A. SEE ARCHITECTURAL DRAWING FOR AREAS TO BE DEMOLISHED.

## SPECIFIC NOTES THIS SHEET:

- ① AREA OF WORK. COORDINATE WITH ARCHITECT PRIOR TO STARTING WORK.
- ② I.T. ROOM. COORDINATE EXACT LOCATON OF HEAD END DATA AND TELEPHONE WITH ARCHITECT.
- ③ ELECTRICAL ROOM. APPROXIMATE LOCATION OF EXISTING DISTRIBUTION PANEL. PROVIDE NEW 150A, 3P, FUSED SWITCH IN SPACE AVAILABLE. PLACE NEW PANEL M ON WALL NEXT TO THIS PANEL. ROUTE 4#1/0 AWG AND 1#6 GRD IN 2" C TO PANEL M.

