

REVISIONS	BY

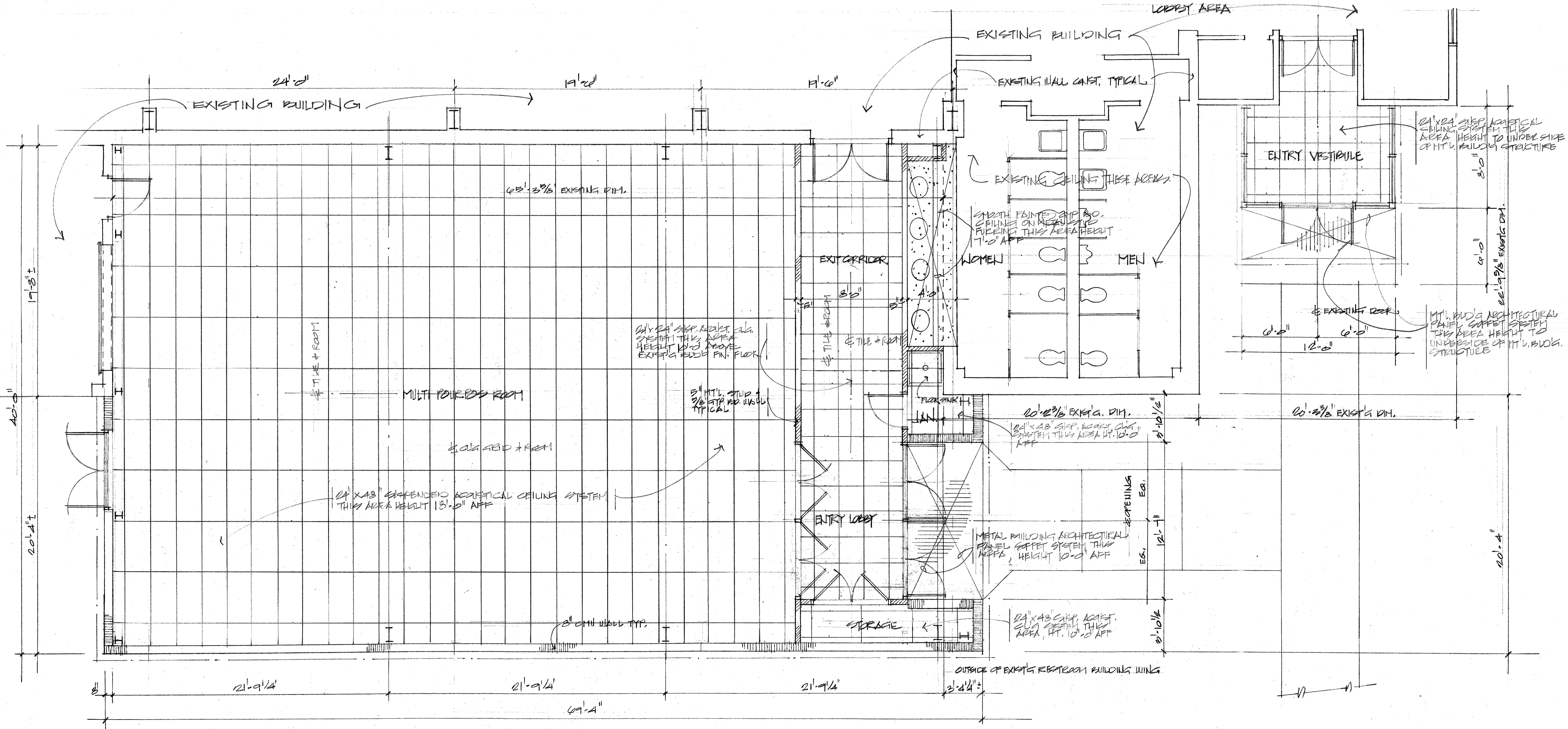
These documents are and shall remain the property of the architect and are intended for the sole use as indicated on these documents. The removal of the architect's seal or stamp from these documents unless otherwise provided by written approval of the architect, shall be a violation of law, (L.A. R.S. 37, Chapter 3, 1983) and such persons shall be subject to the penalties, fines and or imprisonment as stated in Louisiana Law.

FRANK E. GERARVE, JR., ARCHITECT, L.L.C.
 A Professional Architectural Limited Liability Company
 Designers
 9108 CHESTNUT POINT PLACE,
 Telephone: (504) 737-2821

Engineers
 Planners
 RIVER RIDGE, LOUISIANA 70123
 Facsimile: (504) 737-2822

Slidell Little Theatre
 2024 Nellie Drive
 Slidell, Louisiana 70458

DRAWN
CHECKED
DATE
SCALE
JOB NO.
SHEET
4
OF SHEETS



- Legend**
- Existing Construction to Remain
 - - - Existing Construction to be Removed
 - ▨ New Metal Stud and Gypsum Board Wall Construction
 - ▩ New Wood Stud and Gypsum Board Wall Construction
 - ▧ New Concrete Masonry Unit Wall Construction
 - ▦ New Brick Masonry Work Construction
 - ▥ New Concrete Wall Construction

PART FLOOR PLAN / REFLECTED CEILING
 1/4" = 1'-0"