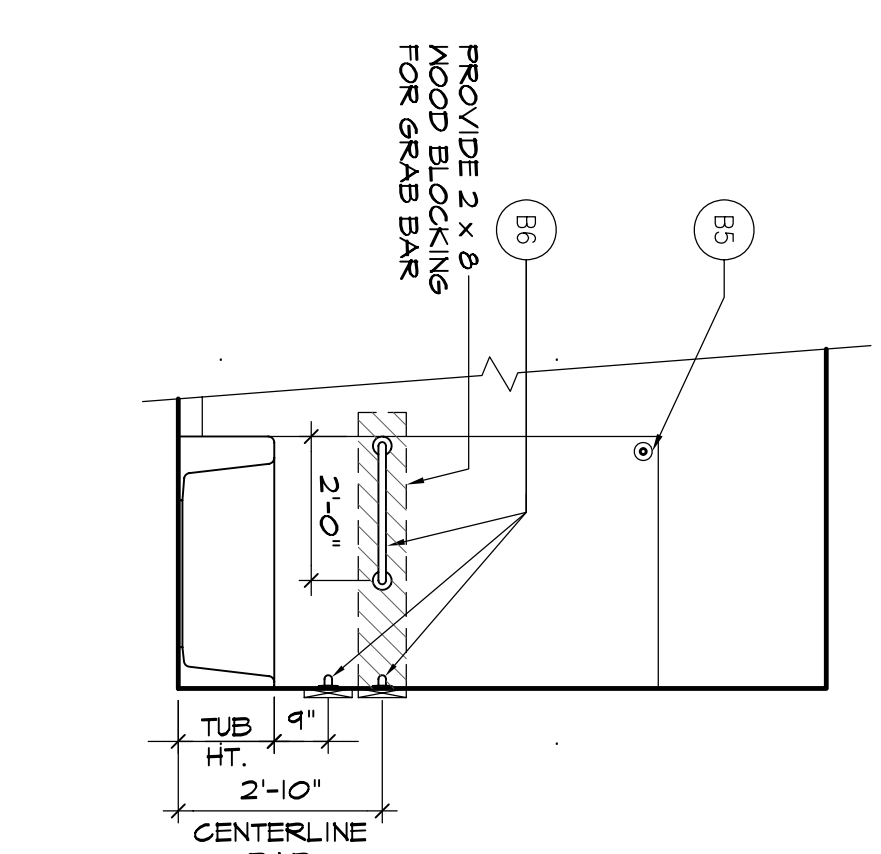
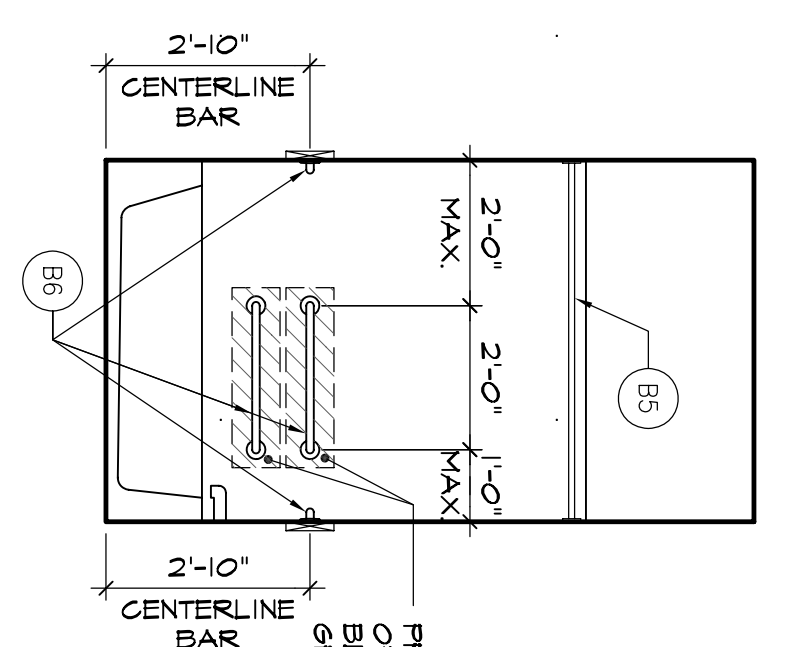
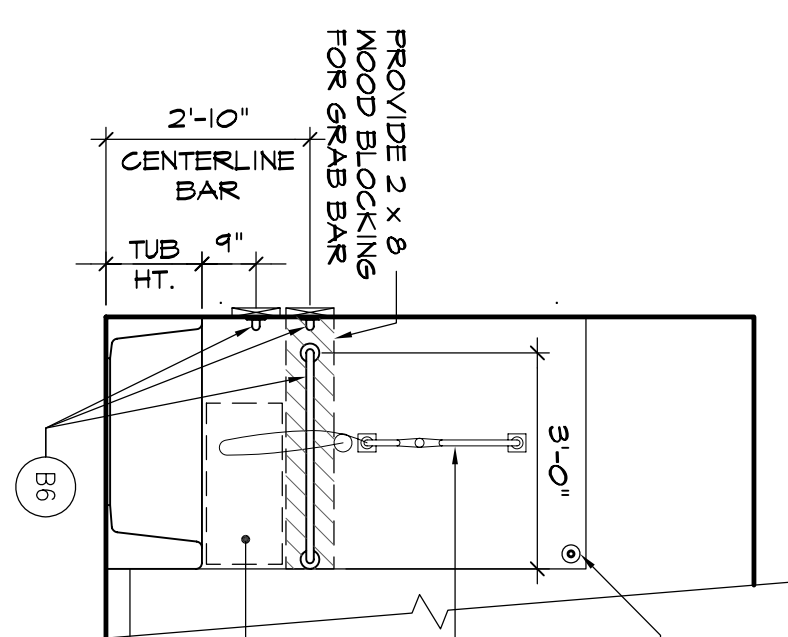
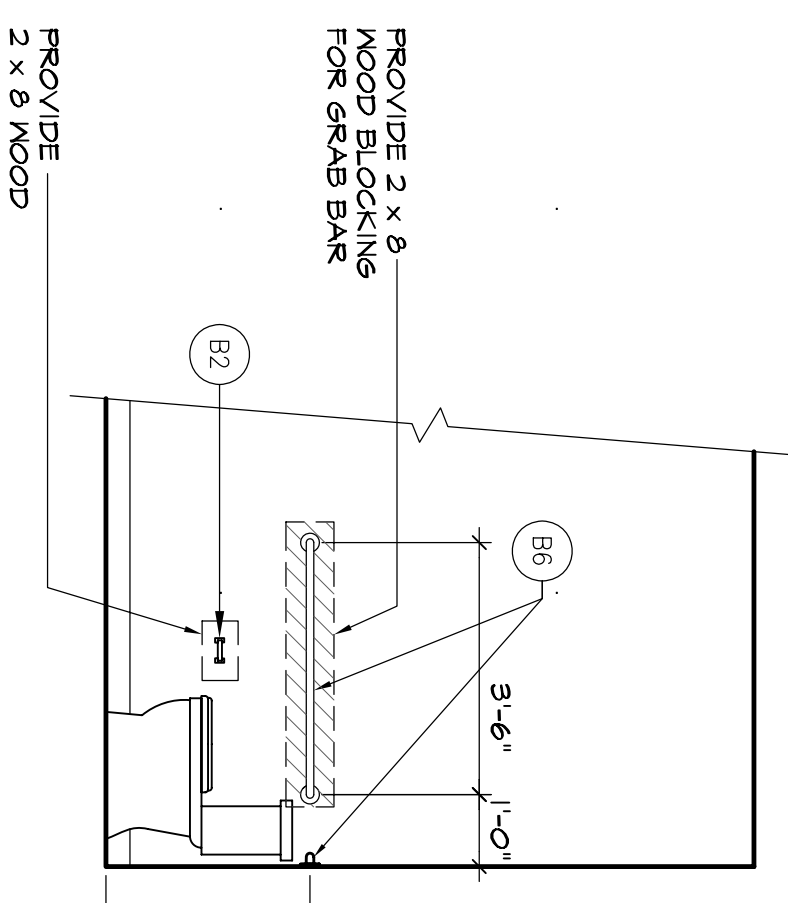
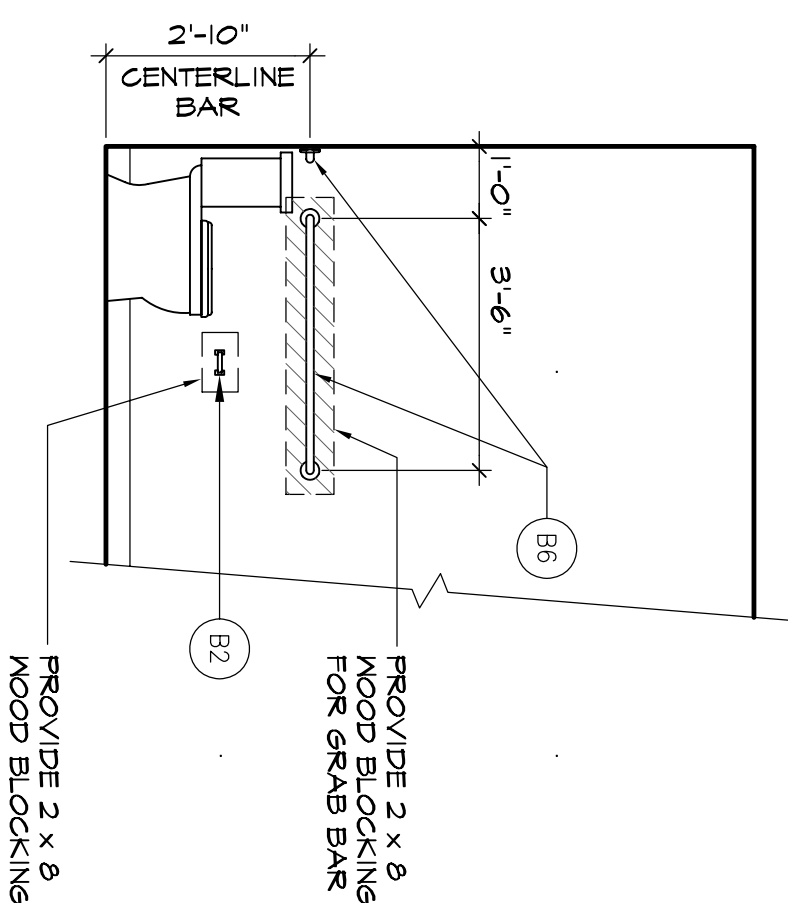


1 BATH ELEV.
SCALE: 3/8" = 1'-0"
ELN-21c

2 BATH ELEV.
SCALE: 3/8" = 1'-0"
ELN-27c

3 H.C. KITCHEN ELEV.
SCALE: 3/8" = 1'-0"
ELN-14dHC

4 H.C. KITCHEN ELEV.
SCALE: 3/8" = 1'-0"
ELN-13dC



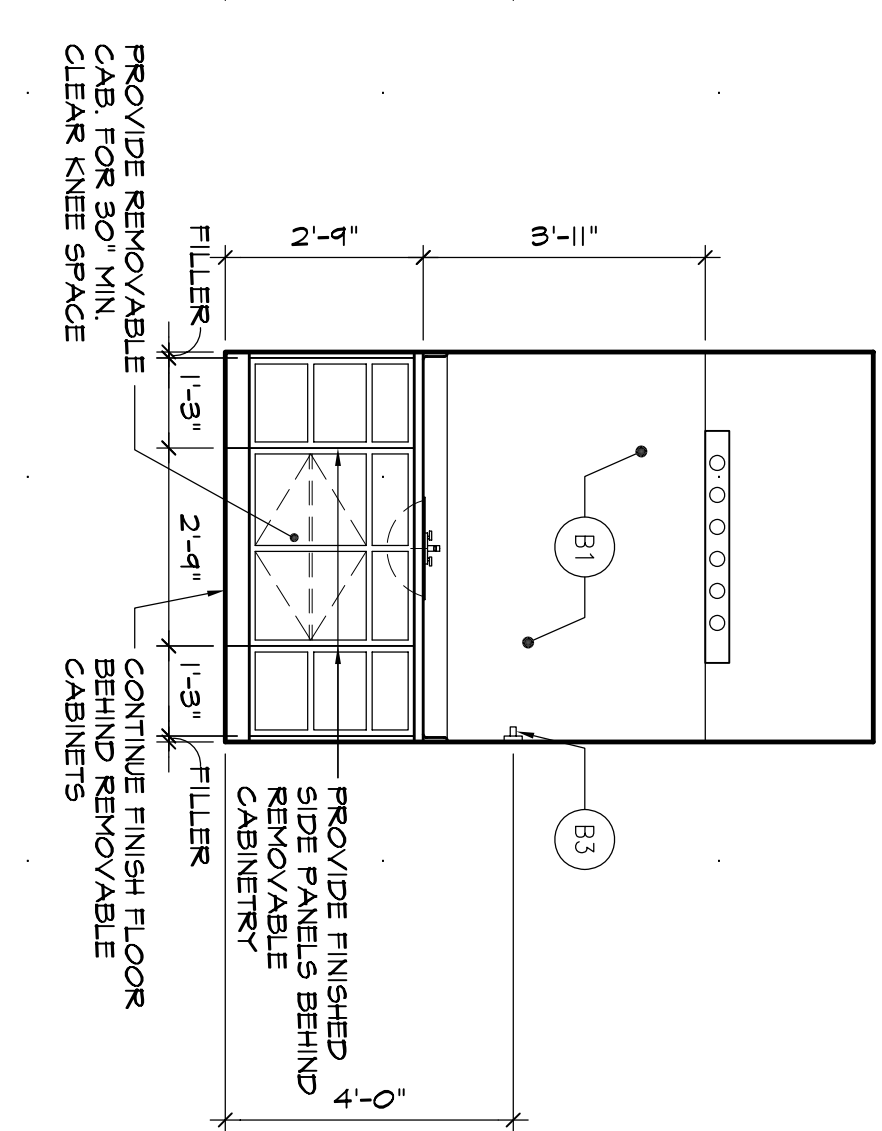
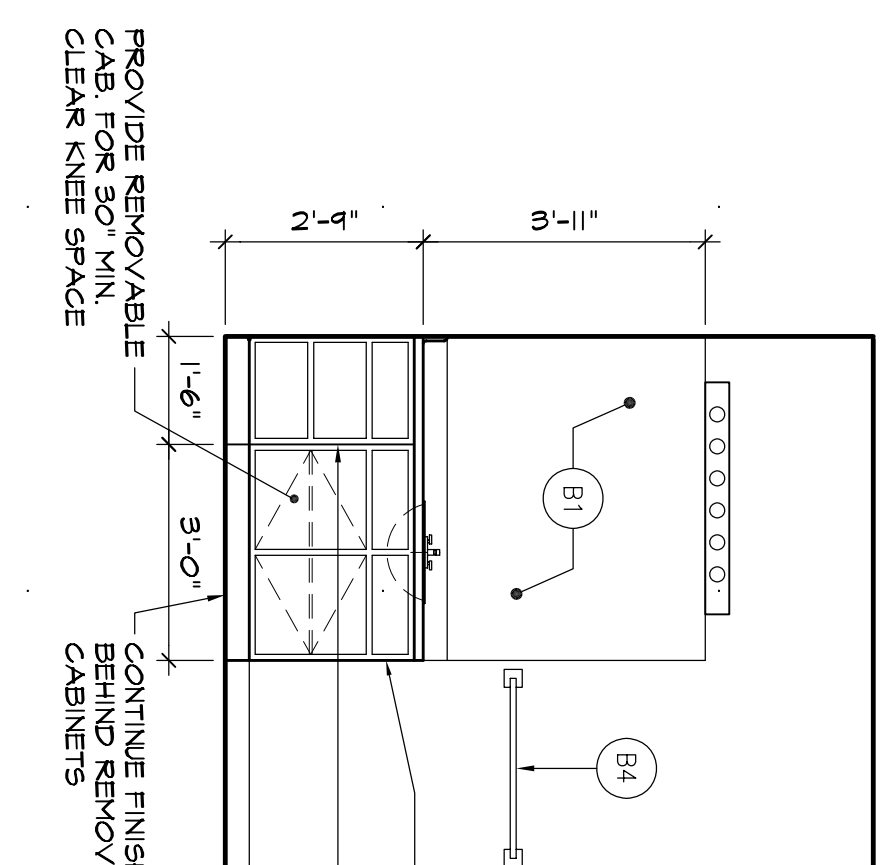
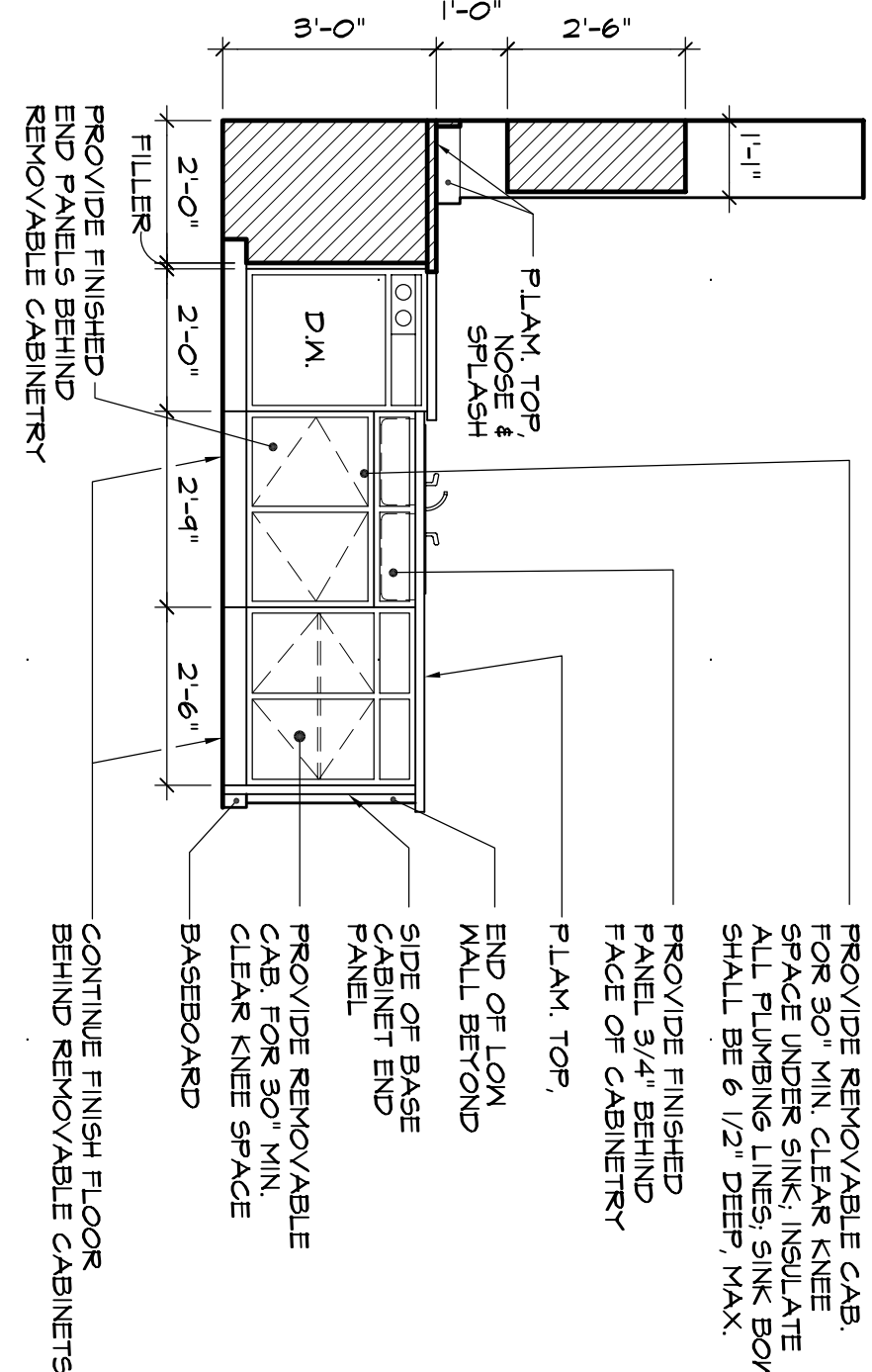
5 H.C. BATH ELEV.
SCALE: 3/8" = 1'-0"
ELN-34

6 H.C. BATH ELEV.
SCALE: 3/8" = 1'-0"
ELN-35

7 H.C. BATH ELEV.
SCALE: 3/8" = 1'-0"
ELN-40

8 H.C. BATH ELEV.
SCALE: 3/8" = 1'-0"
ELN-41

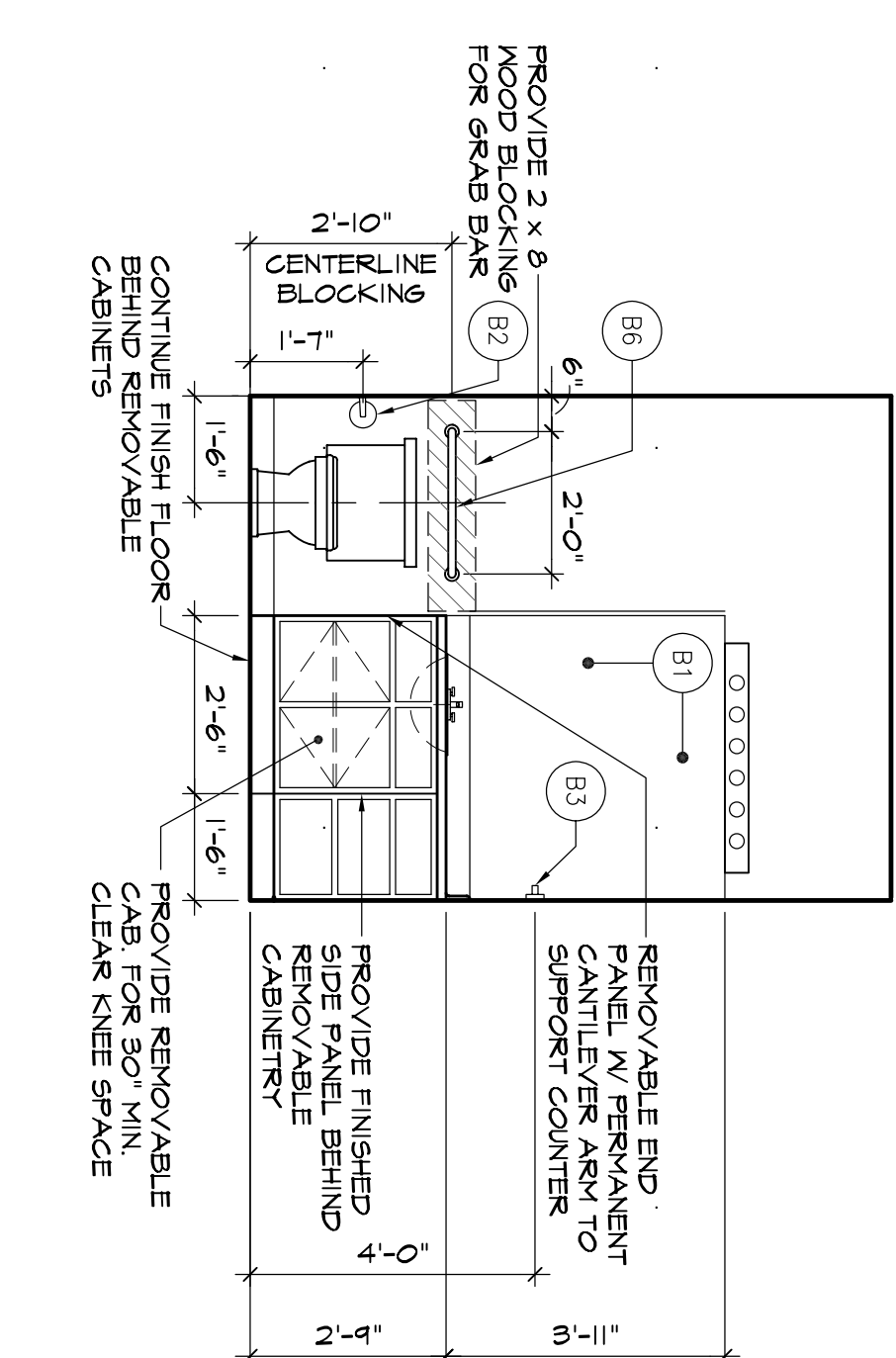
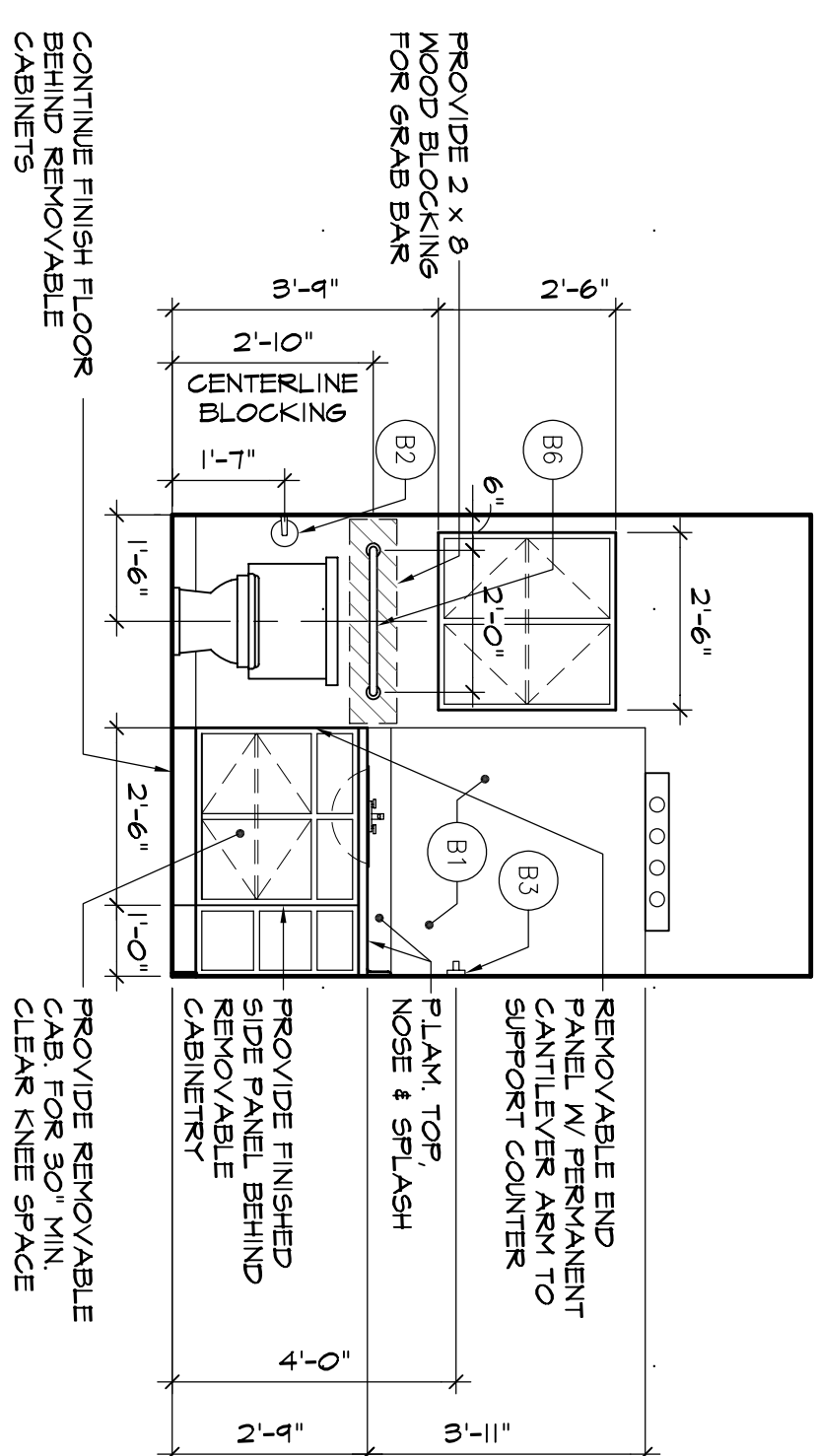
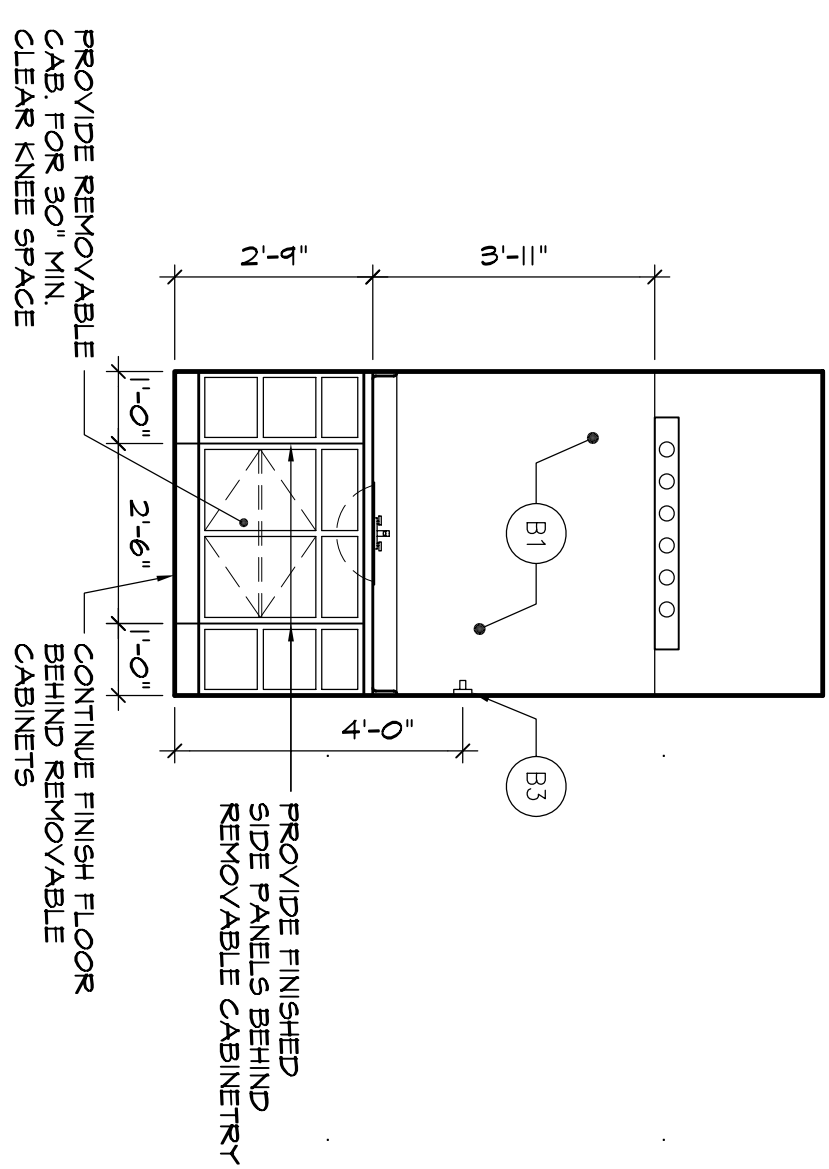
9 H.C. BATH ELEV.
SCALE: 3/8" = 1'-0"
ELN-42



10 H.C. KITCHEN ELEV.
SCALE: 3/8" = 1'-0"
ELN-13b-HC

11 H.C. BATH ELEV.
SCALE: 3/8" = 1'-0"
ELN-28

12 H.C. BATH ELEV.
SCALE: 3/8" = 1'-0"
ELN-28b



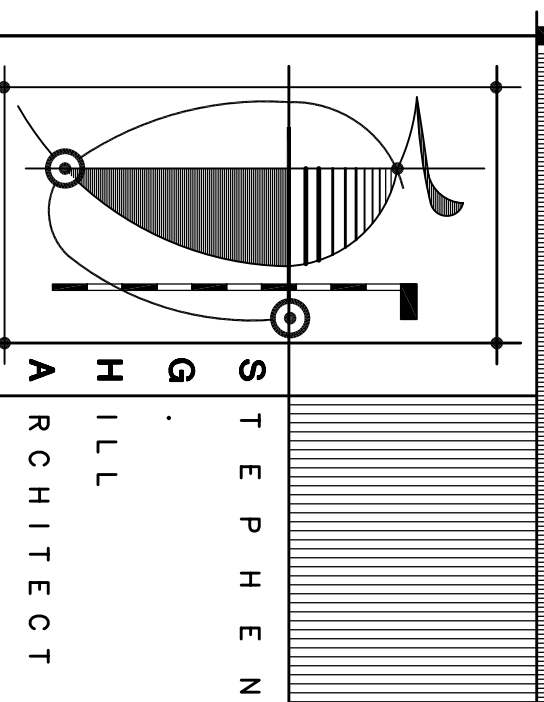
13 H.C. BATH ELEV.
SCALE: 3/8" = 1'-0"
ELN-28b

14 H.C. BATH ELEV.
SCALE: 3/8" = 1'-0"
ELN-27

15 H.C. BATH ELEV.
SCALE: 3/8" = 1'-0"
ELN-14dC

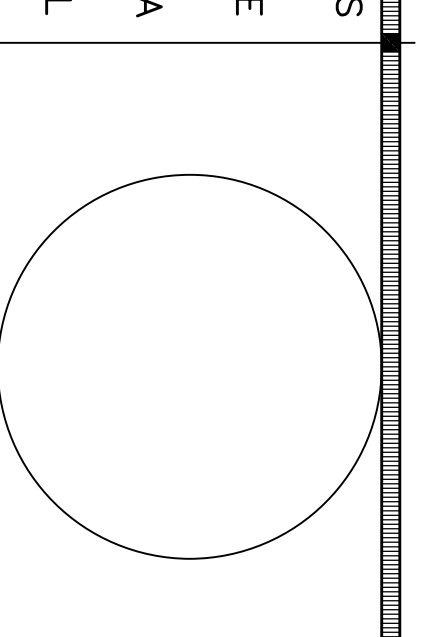
ACCESSIBLE UNIT NOTES

- NOTE:**
ACCESSIBILITY NOTES. APPLY TO ALL KAHN 24HA AND 36HA UNITS.
- BATHROOMS:**
1. WATER CLOSET HEIGHT AT UNITS 14HA, 24HA, AND 36HA SHALL BE 8' MINIMUM TO 8' 1 1/2" MAXIMUM FROM FLOOR TO TOP OF SEAT. WATER CLOSET HEIGHT LEAVING OFFICE SHALL BE 11' MINIMUM TO 14' MAXIMUM FROM FLOOR TO TOP OF SEAT.
2. GRAB BARS SHALL BE 1 1/2" DIA. AND 1 1/2" DIA. SPACING WITH 3" IN BETWEEN. 36" MAXIMUM AS SHOWN ON PLANS EXCEPT AS NOTED OTHERWISE.
3. GRAB BARS SHALL SUPPORT A WEIGHT OF 250 POUNDS ALONG ANY POINT.
4. TOILET PAPER DISPENSER TO BE MOUNTED 8' IN FRONT OF THE WATER CLOSET.
5. TOILET PAPER DISPENSER TO BE MOUNTED 8' IN FRONT OF THE WATER CLOSET.
6. PROVIDE A SHOWER SPRAY UNIT WITH A 60" HOSE MINIMUM THAT CAN BE USED TO PROTECT AGAINST CONTACT.
7. PROVIDE A 30" REMOVABLE BASE CABINET AT THE LAVATORY THAT WILL MEET THE REQUIREMENTS OF DETAILS 2 & 6/NO.4.
8. WATER SUPPLY AND DRAIN PIPES TO BE INSULATED TO PROTECT AGAINST CONTACT.
- KITCHENS:**
1. CLEARANCES BETWEEN COUNTERS AND ALL OPPOSING BASE CABINETS, COUNTERTOPS, AND UPPER CABINETS SHALL BE 34" MINIMUM.
2. PROVIDE A REACHABLE COUNTERTOP DESIGN AT EACH REMOVABLE BASE CABINET STRUCTURE SHALL EXTEND 2' MAXIMUM OVER THE REQUIRED 30" WIDTH.
3. THE DEPTH OF AT LEAST ONE BOWL AT THE KITCHEN SINK SHALL BE 6 1/2" MAXIMUM.
4. REMOVABLE BASE CABINET EXTEND UNDER THE COUNTER TO THE WALL AT EACH REMOVABLE BASE CABINET.
5. PROVIDE LEVER HARDWARE AT KITCHEN FAUCET.
6. TO PROTECT AGAINST CONTACT, PIPES UNDER SINK SHALL BE INSULATED TO PROTECT AGAINST CONTACT.
7. CONTROLS FOR THE RAISE SHALL NOT REQUIRE REACHING ACROSS THE BURNERS.
8. WALL CABINETS SHALL BE MOUNTED ABOVE WORK COUNTERS, A MAXIMUM OF 48" ABOVE FINISHED FLOOR.
- CLOSETS:**
1. HOOK CLOSET SHELVEING 48" MAXIMUM ABOVE FINISH FLOOR.



STEPHEN
HILL
ARCHITECT

434 BROOKRIDGE CIRCLE
CORONA, TN 38018
901-578-3400 FAX 901-578-3450
ste@sgnarchitect.com



CROSSWINDS

HAMMOND, LA

GENERAL NOTES:
1. DIMENSIONS ON INTERIOR ELEVATIONS ARE TO FACE OF FINISHED WALL UNDO.

PROGRESS SET
NOT FOR
CONSTRUCTION

KEYED BATH ACCESSORIES
B1 MIRROR
B2 TOILET PAPER DISPENSER
B3 TOWEL BAR - 24"
B4 TOWEL BAR - 30"
B5 SHOWER CURTAIN ROD
B6 GRAB BAR

REVISIONS

REVISIONS
1. NOT SCALE DRAWINGS.
2. ALL DIMENSIONS ARE IN FEET AND INCHES.
3. DIMENSIONS ON INTERIOR ELEVATIONS ARE TO FACE OF FINISHED WALL UNDO.
4. DIMENSIONS ON EXTERIOR ELEVATIONS ARE TO FACE OF EXTERIOR FINISH.
5. DIMENSIONS ON SECTION ELEVATIONS ARE TO FACE OF FINISHED WALL UNDO.
6. DIMENSIONS ON SECTION ELEVATIONS ARE TO FACE OF FINISHED WALL UNDO.
7. DIMENSIONS ON SECTION ELEVATIONS ARE TO FACE OF FINISHED WALL UNDO.
8. DIMENSIONS ON SECTION ELEVATIONS ARE TO FACE OF FINISHED WALL UNDO.
9. DIMENSIONS ON SECTION ELEVATIONS ARE TO FACE OF FINISHED WALL UNDO.
10. DIMENSIONS ON SECTION ELEVATIONS ARE TO FACE OF FINISHED WALL UNDO.
11. DIMENSIONS ON SECTION ELEVATIONS ARE TO FACE OF FINISHED WALL UNDO.
12. DIMENSIONS ON SECTION ELEVATIONS ARE TO FACE OF FINISHED WALL UNDO.
13. DIMENSIONS ON SECTION ELEVATIONS ARE TO FACE OF FINISHED WALL UNDO.
14. DIMENSIONS ON SECTION ELEVATIONS ARE TO FACE OF FINISHED WALL UNDO.
15. DIMENSIONS ON SECTION ELEVATIONS ARE TO FACE OF FINISHED WALL UNDO.
16. DIMENSIONS ON SECTION ELEVATIONS ARE TO FACE OF FINISHED WALL UNDO.
17. DIMENSIONS ON SECTION ELEVATIONS ARE TO FACE OF FINISHED WALL UNDO.
18. DIMENSIONS ON SECTION ELEVATIONS ARE TO FACE OF FINISHED WALL UNDO.
19. DIMENSIONS ON SECTION ELEVATIONS ARE TO FACE OF FINISHED WALL UNDO.
20. DIMENSIONS ON SECTION ELEVATIONS ARE TO FACE OF FINISHED WALL UNDO.
21. DIMENSIONS ON SECTION ELEVATIONS ARE TO FACE OF FINISHED WALL UNDO.
22. DIMENSIONS ON SECTION ELEVATIONS ARE TO FACE OF FINISHED WALL UNDO.
23. DIMENSIONS ON SECTION ELEVATIONS ARE TO FACE OF FINISHED WALL UNDO.
24. DIMENSIONS ON SECTION ELEVATIONS ARE TO FACE OF FINISHED WALL UNDO.
25. DIMENSIONS ON SECTION ELEVATIONS ARE TO FACE OF FINISHED WALL UNDO.
26. DIMENSIONS ON SECTION ELEVATIONS ARE TO FACE OF FINISHED WALL UNDO.
27. DIMENSIONS ON SECTION ELEVATIONS ARE TO FACE OF FINISHED WALL UNDO.
28. DIMENSIONS ON SECTION ELEVATIONS ARE TO FACE OF FINISHED WALL UNDO.
29. DIMENSIONS ON SECTION ELEVATIONS ARE TO FACE OF FINISHED WALL UNDO.
30. DIMENSIONS ON SECTION ELEVATIONS ARE TO FACE OF FINISHED WALL UNDO.
31. DIMENSIONS ON SECTION ELEVATIONS ARE TO FACE OF FINISHED WALL UNDO.
32. DIMENSIONS ON SECTION ELEVATIONS ARE TO FACE OF FINISHED WALL UNDO.
33. DIMENSIONS ON SECTION ELEVATIONS ARE TO FACE OF FINISHED WALL UNDO.
34. DIMENSIONS ON SECTION ELEVATIONS ARE TO FACE OF FINISHED WALL UNDO.
35. DIMENSIONS ON SECTION ELEVATIONS ARE TO FACE OF FINISHED WALL UNDO.
36. DIMENSIONS ON SECTION ELEVATIONS ARE TO FACE OF FINISHED WALL UNDO.
37. DIMENSIONS ON SECTION ELEVATIONS ARE TO FACE OF FINISHED WALL UNDO.
38. DIMENSIONS ON SECTION ELEVATIONS ARE TO FACE OF FINISHED WALL UNDO.
39. DIMENSIONS ON SECTION ELEVATIONS ARE TO FACE OF FINISHED WALL UNDO.
40. DIMENSIONS ON SECTION ELEVATIONS ARE TO FACE OF FINISHED WALL UNDO.
41. DIMENSIONS ON SECTION ELEVATIONS ARE TO FACE OF FINISHED WALL UNDO.
42. DIMENSIONS ON SECTION ELEVATIONS ARE TO FACE OF FINISHED WALL UNDO.
43. DIMENSIONS ON SECTION ELEVATIONS ARE TO FACE OF FINISHED WALL UNDO.
44. DIMENSIONS ON SECTION ELEVATIONS ARE TO FACE OF FINISHED WALL UNDO.
45. DIMENSIONS ON SECTION ELEVATIONS ARE TO FACE OF FINISHED WALL UNDO.
46. DIMENSIONS ON SECTION ELEVATIONS ARE TO FACE OF FINISHED WALL UNDO.
47. DIMENSIONS ON SECTION ELEVATIONS ARE TO FACE OF FINISHED WALL UNDO.
48. DIMENSIONS ON SECTION ELEVATIONS ARE TO FACE OF FINISHED WALL UNDO.
49. DIMENSIONS ON SECTION ELEVATIONS ARE TO FACE OF FINISHED WALL UNDO.
50. DIMENSIONS ON SECTION ELEVATIONS ARE TO FACE OF FINISHED WALL UNDO.
51. DIMENSIONS ON SECTION ELEVATIONS ARE TO FACE OF FINISHED WALL UNDO.
52. DIMENSIONS ON SECTION ELEVATIONS ARE TO FACE OF FINISHED WALL UNDO.
53. DIMENSIONS ON SECTION ELEVATIONS ARE TO FACE OF FINISHED WALL UNDO.
54. DIMENSIONS ON SECTION ELEVATIONS ARE TO FACE OF FINISHED WALL UNDO.
55. DIMENSIONS ON SECTION ELEVATIONS ARE TO FACE OF FINISHED WALL UNDO.
56. DIMENSIONS ON SECTION ELEVATIONS ARE TO FACE OF FINISHED WALL UNDO.
57. DIMENSIONS ON SECTION ELEVATIONS ARE TO FACE OF FINISHED WALL UNDO.
58. DIMENSIONS ON SECTION ELEVATIONS ARE TO FACE OF FINISHED WALL UNDO.
59. DIMENSIONS ON SECTION ELEVATIONS ARE TO FACE OF FINISHED WALL UNDO.
60. DIMENSIONS ON SECTION ELEVATIONS ARE TO FACE OF FINISHED WALL UNDO.
61. DIMENSIONS ON SECTION ELEVATIONS ARE TO FACE OF FINISHED WALL UNDO.
62. DIMENSIONS ON SECTION ELEVATIONS ARE TO FACE OF FINISHED WALL UNDO.
63. DIMENSIONS ON SECTION ELEVATIONS ARE TO FACE OF FINISHED WALL UNDO.
64. DIMENSIONS ON SECTION ELEVATIONS ARE TO FACE OF FINISHED WALL UNDO.
65. DIMENSIONS ON SECTION ELEVATIONS ARE TO FACE OF FINISHED WALL UNDO.
66. DIMENSIONS ON SECTION ELEVATIONS ARE TO FACE OF FINISHED WALL UNDO.
67. DIMENSIONS ON SECTION ELEVATIONS ARE TO FACE OF FINISHED WALL UNDO.
68. DIMENSIONS ON SECTION ELEVATIONS ARE TO FACE OF FINISHED WALL UNDO.
69. DIMENSIONS ON SECTION ELEVATIONS ARE TO FACE OF FINISHED WALL UNDO.
70. DIMENSIONS ON SECTION ELEVATIONS ARE TO FACE OF FINISHED WALL UNDO.
71. DIMENSIONS ON SECTION ELEVATIONS ARE TO FACE OF FINISHED WALL UNDO.
72. DIMENSIONS ON SECTION ELEVATIONS ARE TO FACE OF FINISHED WALL UNDO.
73. DIMENSIONS ON SECTION ELEVATIONS ARE TO FACE OF FINISHED WALL UNDO.
74. DIMENSIONS ON SECTION ELEVATIONS ARE TO FACE OF FINISHED WALL UNDO.
75. DIMENSIONS ON SECTION ELEVATIONS ARE TO FACE OF FINISHED WALL UNDO.
76. DIMENSIONS ON SECTION ELEVATIONS ARE TO FACE OF FINISHED WALL UNDO.
77. DIMENSIONS ON SECTION ELEVATIONS ARE TO FACE OF FINISHED WALL UNDO.
78. DIMENSIONS ON SECTION ELEVATIONS ARE TO FACE OF FINISHED WALL UNDO.
79. DIMENSIONS ON SECTION ELEVATIONS ARE TO FACE OF FINISHED WALL UNDO.
80. DIMENSIONS ON SECTION ELEVATIONS ARE TO FACE OF FINISHED WALL UNDO.
81. DIMENSIONS ON SECTION ELEVATIONS ARE TO FACE OF FINISHED WALL UNDO.
82. DIMENSIONS ON SECTION ELEVATIONS ARE TO FACE OF FINISHED WALL UNDO.
83. DIMENSIONS ON SECTION ELEVATIONS ARE TO FACE OF FINISHED WALL UNDO.
84. DIMENSIONS ON SECTION ELEVATIONS ARE TO FACE OF FINISHED WALL UNDO.
85. DIMENSIONS ON SECTION ELEVATIONS ARE TO FACE OF FINISHED WALL UNDO.
86. DIMENSIONS ON SECTION ELEVATIONS ARE TO FACE OF FINISHED WALL UNDO.
87. DIMENSIONS ON SECTION ELEVATIONS ARE TO FACE OF FINISHED WALL UNDO.
88. DIMENSIONS ON SECTION ELEVATIONS ARE TO FACE OF FINISHED WALL UNDO.
89. DIMENSIONS ON SECTION ELEVATIONS ARE TO FACE OF FINISHED WALL UNDO.
90. DIMENSIONS ON SECTION ELEVATIONS ARE TO FACE OF FINISHED WALL UNDO.
91. DIMENSIONS ON SECTION ELEVATIONS ARE TO FACE OF FINISHED WALL UNDO.
92. DIMENSIONS ON SECTION ELEVATIONS ARE TO FACE OF FINISHED WALL UNDO.
93. DIMENSIONS ON SECTION ELEVATIONS ARE TO FACE OF FINISHED WALL UNDO.
94. DIMENSIONS ON SECTION ELEVATIONS ARE TO FACE OF FINISHED WALL UNDO.
95. DIMENSIONS ON SECTION ELEVATIONS ARE TO FACE OF FINISHED WALL UNDO.
96. DIMENSIONS ON SECTION ELEVATIONS ARE TO FACE OF FINISHED WALL UNDO.
97. DIMENSIONS ON SECTION ELEVATIONS ARE TO FACE OF FINISHED WALL UNDO.
98. DIMENSIONS ON SECTION ELEVATIONS ARE TO FACE OF FINISHED WALL UNDO.
99. DIMENSIONS ON SECTION ELEVATIONS ARE TO FACE OF FINISHED WALL UNDO.
100. DIMENSIONS ON SECTION ELEVATIONS ARE TO FACE OF FINISHED WALL UNDO.

INTERIOR ELEVATIONS

DRAWN: CS
CHECKED: GSH
DATE: 10-26-09
PROJECT: 08112.13
SHEET: A104

DATE: 10-26-09
PROJECT: 08112.13
SHEET: A104