



NOT UNDER ROADWAYS

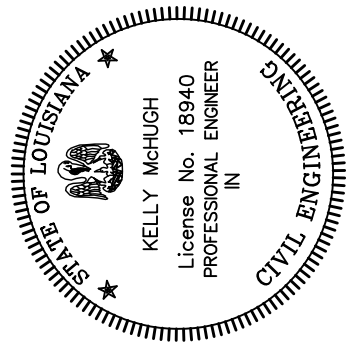
PIPE BEDDING DETAIL

LEGEND:

- | | |
|---|----------------------------|
|  | DIRECTION OF SURFACE FLOW |
| 1.20' | EXISTING ELEVATION |
| +0.0 | PROPOSED ELEVATION |
|  | DRAIN INLET
CATCH BASIN |

NOTES:

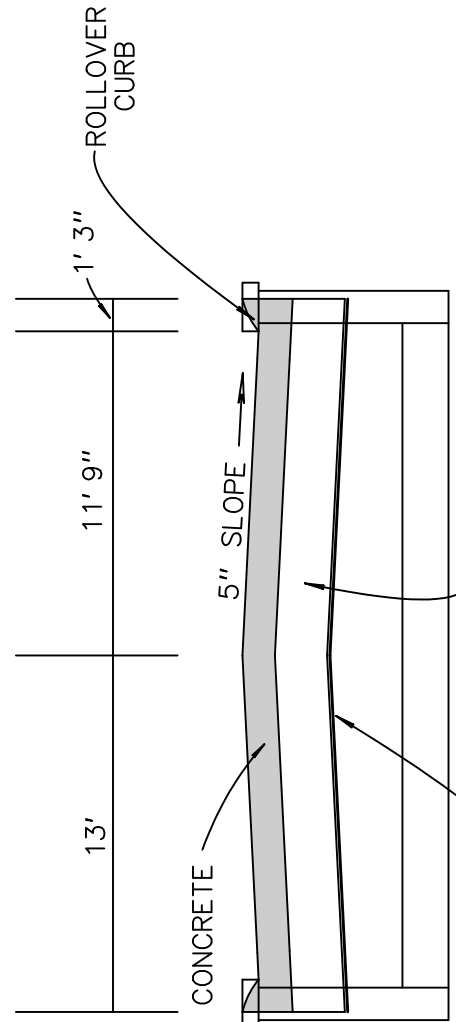
1. ALL DRAIN PIPE SHALL BE RPVCP UNLESS NOTED OTHERWISE.



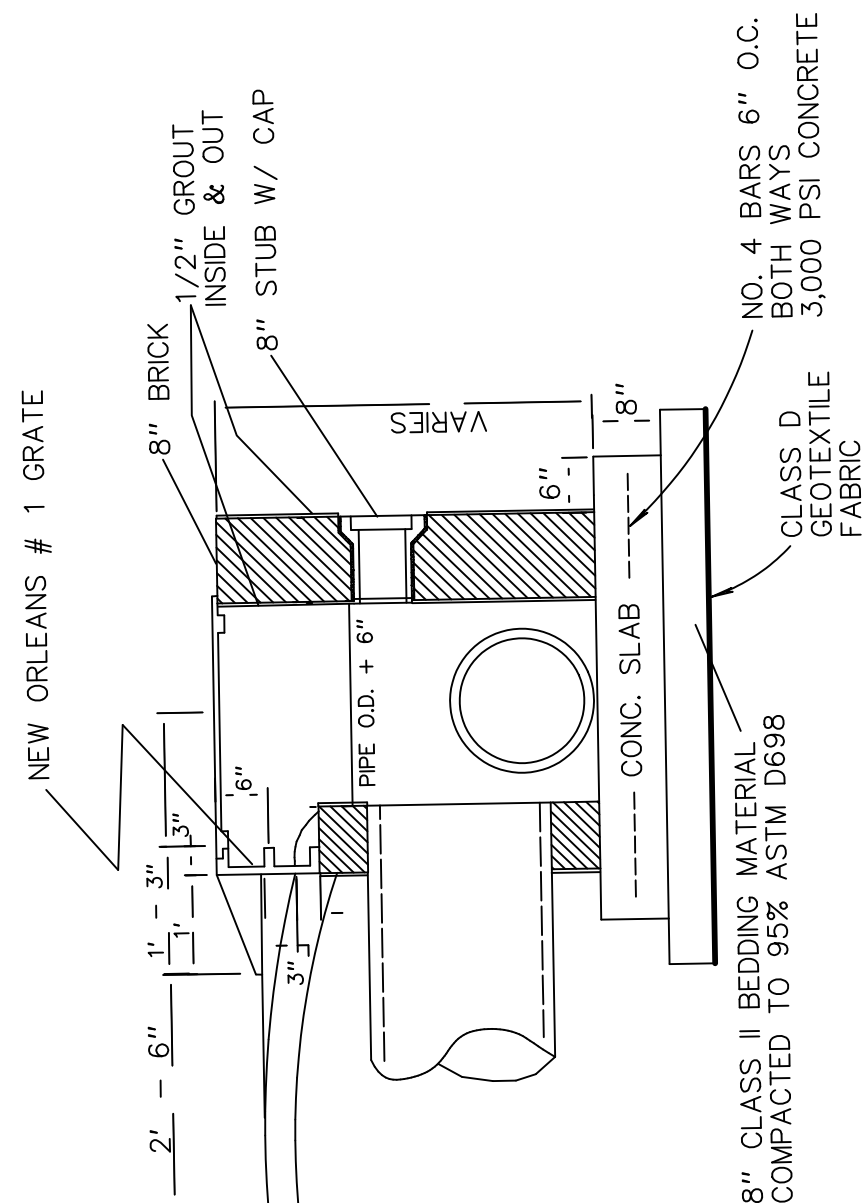
9" PORTLAND CEMENT CONCRETE
6" COMPACTED 610 LIMESTONE
9" COMPACTED SAND OR PUMPED RIVER SAND

CLASS D GEOTEXTILE FABRIC
EXISTING COMPACTED SUBBASE

PAVEMENT DETAIL



STREET SECTION A-A



CURB INLET CATCH BASIN DETAIL
(TYPE 1)

ACCESS ROADWAY DRAINAGE AND GRADING PLAN