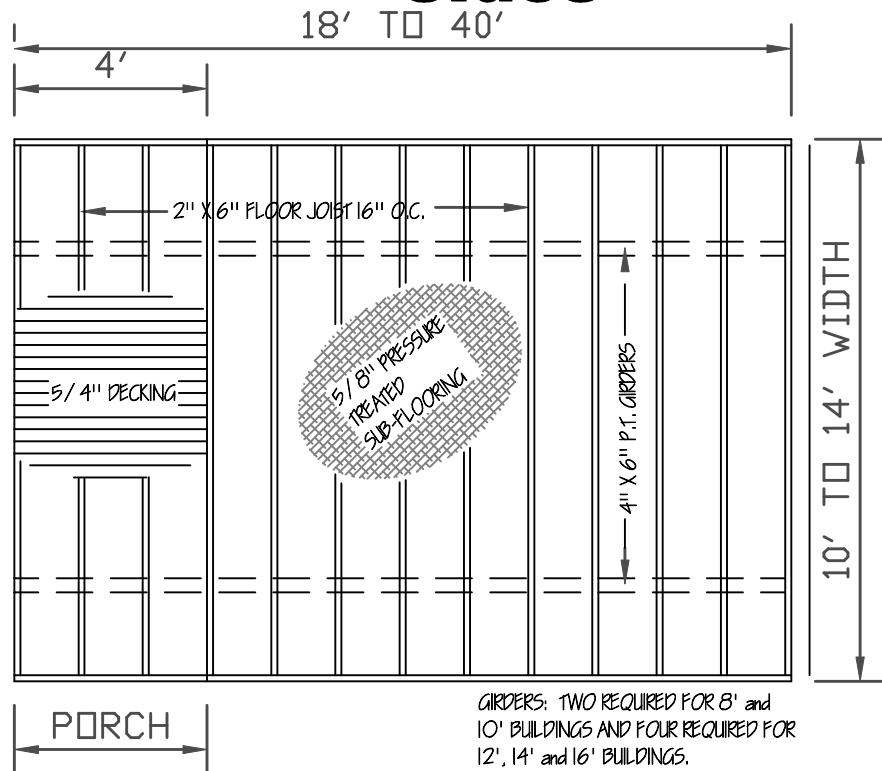
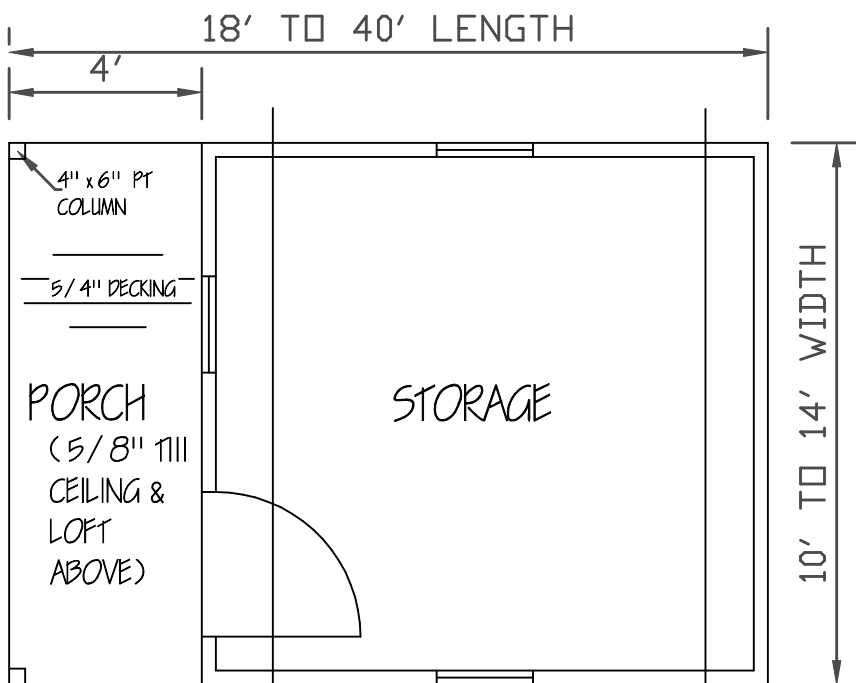


Sides



FLOOR FRAMING



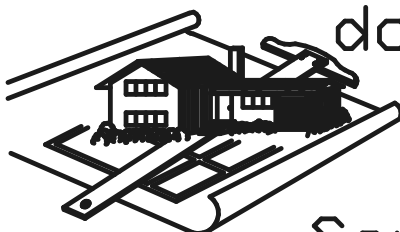
FLOOR PLAN

ENGINEERS' NOTES:

1. FOUNDATIONS PIERS, TIE-DOWNS AND ANCHORS SHALL MEET THE REQUIREMENTS OF THE "PERMANENT FOUNDATIONS GUIDE OF MANUFACTURED HOUSING" AS PUBLISHED BY HUD IN SEPTEMBER 1996, AND THE HUD HANDBOOK 4145.1 REV. 2.
2. NO FIELD SUPERVISION PROVIDED UNDER THIS SEAL.
3. NO ADMINISTRATION PROVIDED UNDER THIS SEAL.

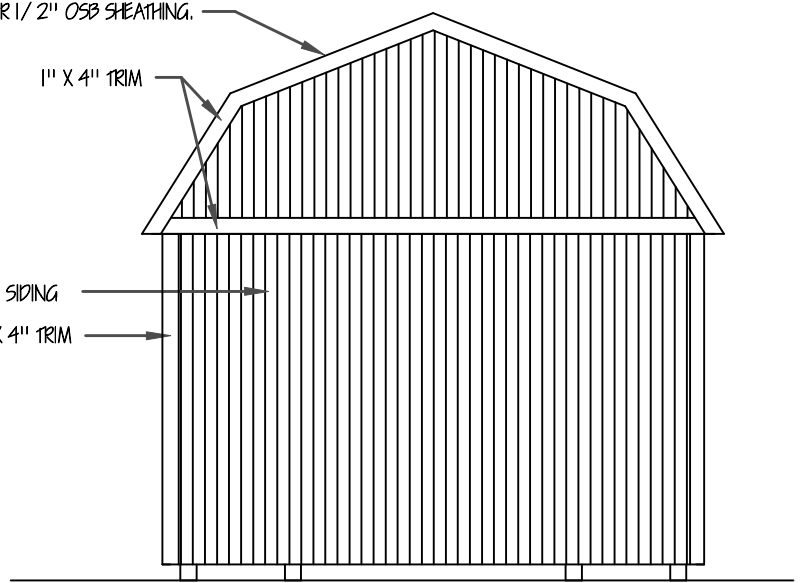
DAMMON ENGINEERING
1095 FLORIDA AVE.
SLIDELL, LOUISIANA

985 - 649 - 5832



4210 Stewart Lane
Perdixton, MS 39573
228/233-3239

doug's
plan
Service



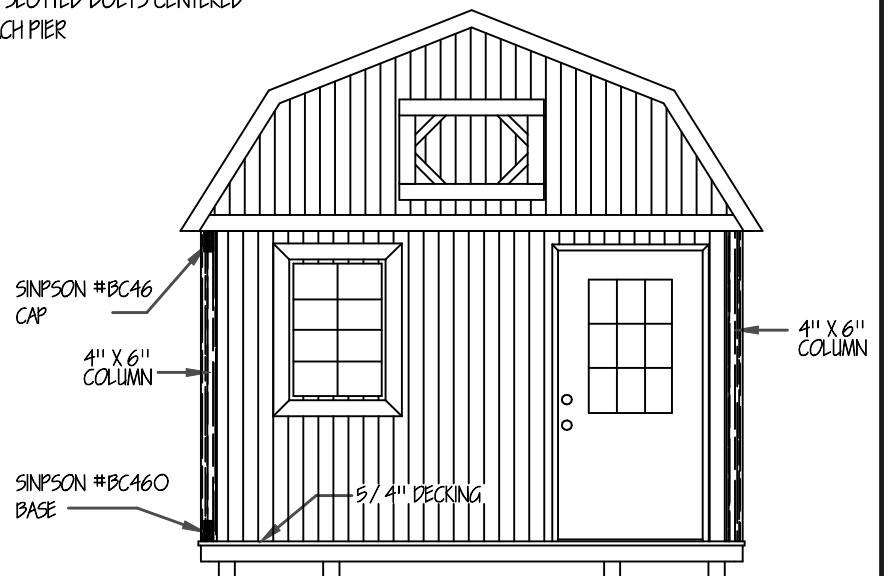
Rear

SIDE DOORS AND
WINDOWS OPTIONAL

ANCHORS: IRON ROOT DOUBLE HEAD
DOUBLE HELIX EARTH ANCHORS. 30" LONG
BY 3/4" W/ 2-4" HELIX FOR SOIL CLASS 2

GIRDERS: TWO REQUIRED FOR 8'
and 10' BUILDINGS AND FOUR
REQUIRED FOR 12', 14' and 16'
BUILDINGS.

1-1/4" FRAME TIE GALVANIZE STRAP WITH
BUCKLE AND SLOTTED BOLTS CENTERED
BETWEEN EACH PIER



Front

MEASURES SHALL BE TAKEN DURING CONSTRUCTION
TO INSURE THAT ONLY WORKMANSHIP OF THE HIGHEST QUALITY
IS PERFORMED AND THAT ONLY THE BEST MATERIALS AND
PRACTICES OF CONSTRUCTION ARE USED FOR A QUALITY AND
SOUND BUILDING.
BUILDINGS 14'-0" AND 16'-0" WIDE, STUDS
16" O.C.

NOTE: THE UTILITY FLOORING, WALLS AND ROOF
ARE DESIGNED TO COMPLY WITH THE 2003, 2006
AND 2009 INTERNATIONAL BUILDING AND
INTERNATIONAL RESIDENTIAL CODES. THEY ARE NOT
INTENDED FOR RESIDENTIAL USE. FOR RESIDENTIAL
USAGE 'ALL' STATE AND LOCAL CODES MUST BE MET
INCLUDING BUT NOT LIMITED TO SIZES, OPENINGS,
CEILING HEIGHTS, ELECTRICAL, PLUMBING ETC.

Lofted Barn Cabin

WIND CERTIFICATION

WIND EXPOSURE CATEGORY 'C'

BASIC WIND SPEED (3 SECOND GUST) 150 M.P.H.

MISSISSIPPI-LOUISIANA

GRACELAND PROPERTIES LLC

P.O. BOX 665
CUNNINGHAM, KY 42035
601 - 799 - 4545

Copyright (C) 2008 by Graceland Properties LLC
All Rights Reserved, including the rights of reproduction in
whole or in part in any form.