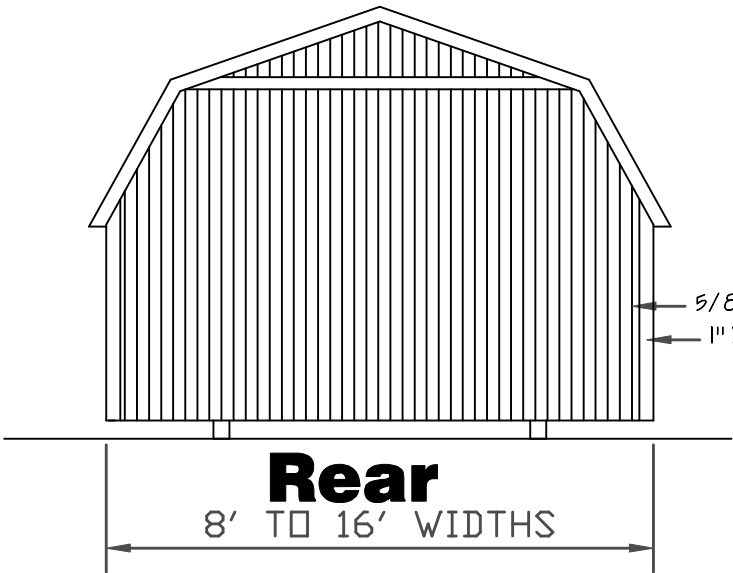
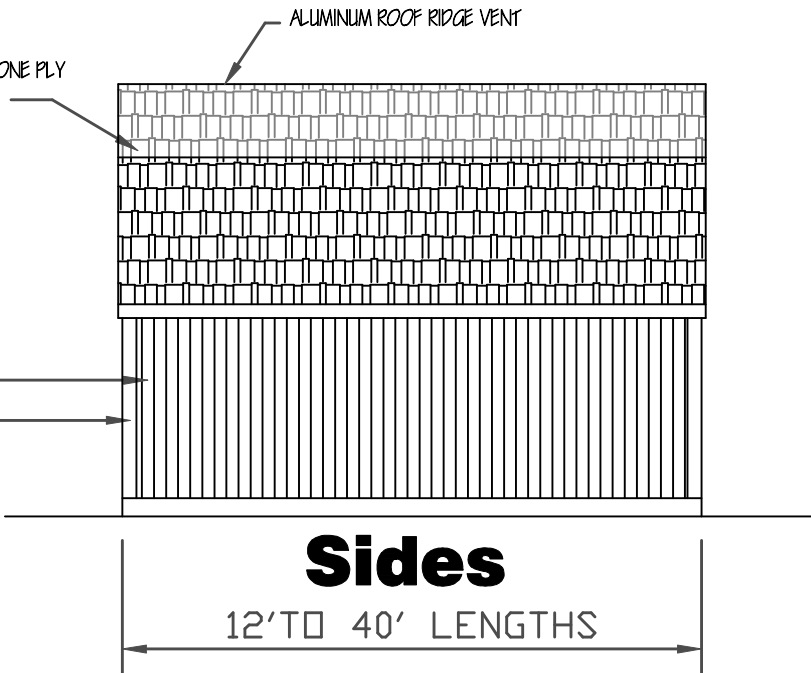
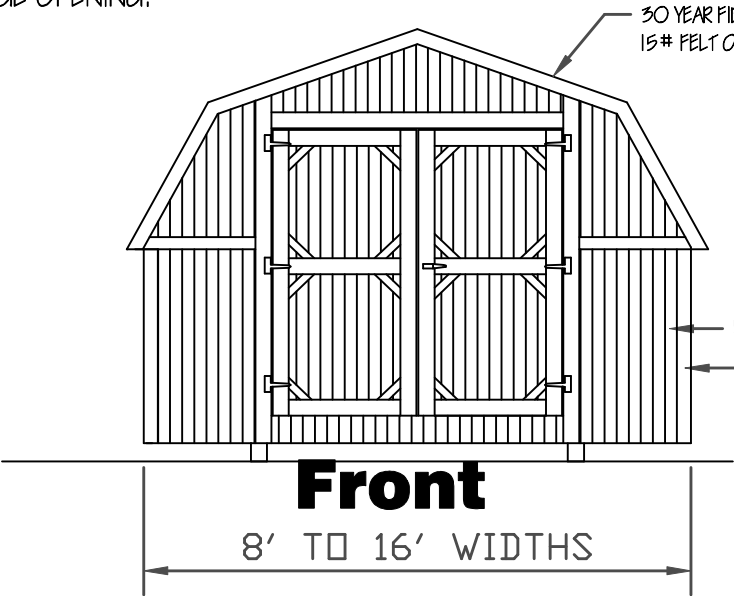
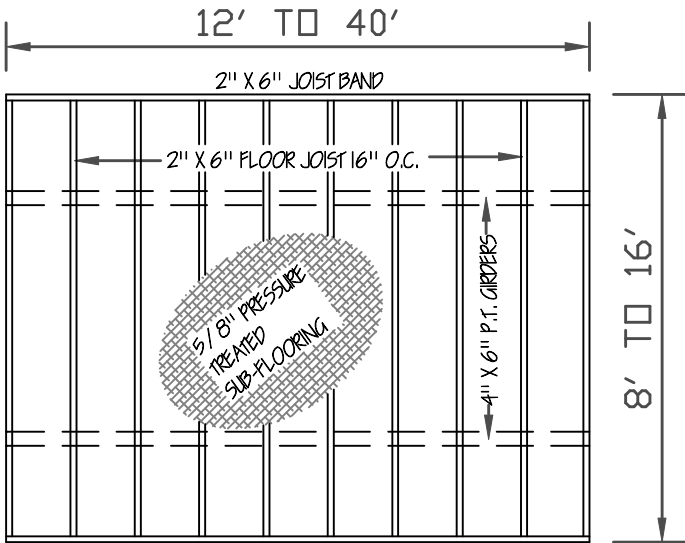
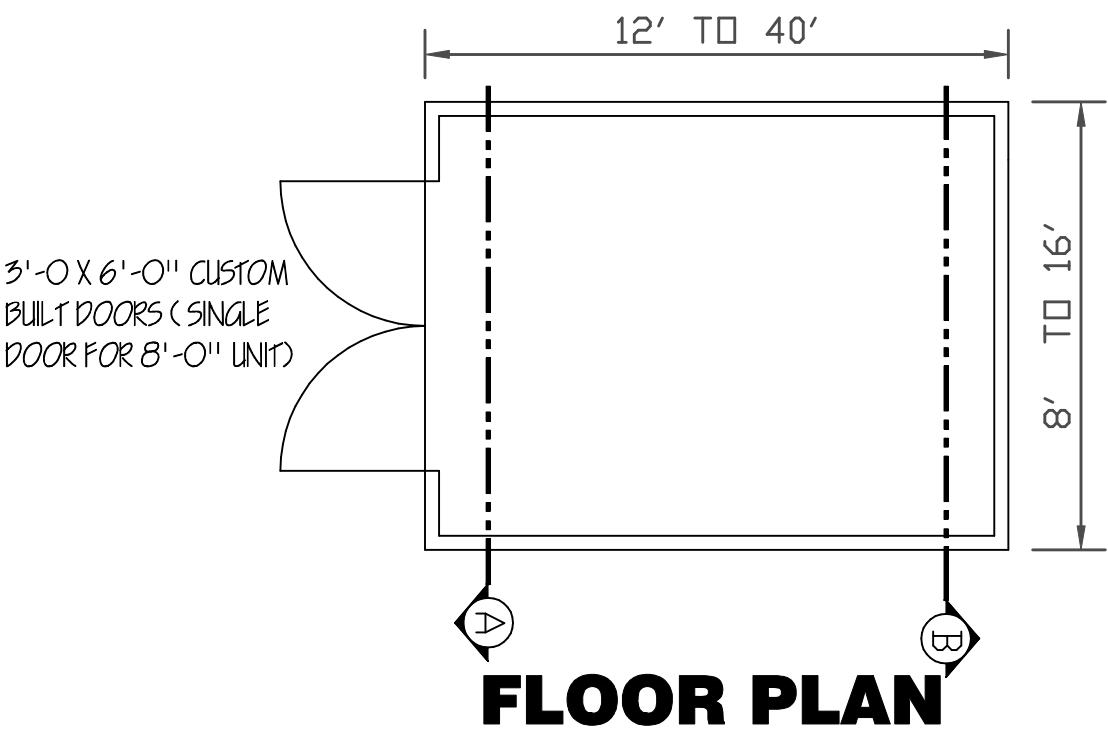


OPTIONAL METAL ROOFING
OPTIONAL METAL ROOFING SHALL BE 29 GAGE OVER
1/ 2" OSB SHEATHING WITH 29 GAGE RIDGE CAP,
EAVE TRIM AND RAKE TRIM. SCREEN CLOSURE OVER
RIDGE OPENING.



ANCHORS: IRON ROOF DOUBLE HEAD
DOUBLE HELIX EARTH ANCHORS, 30" LONG
BY 3/ 4" W/ 2-4" HELIX FOR SOIL CLASS 2
1 -1/ 4" FRAME TIE GALVANIZE STRAP WITH
BUCKLE AND SLOTTED BOLTS CENTERED
BETWEEN EACH PIER

GIRDERS: TWO REQUIRED FOR 8' and 10' BUILDINGS AND FOUR REQUIRED FOR 12', 14' and 16' BUILDINGS.



FLOOR FRAMING

GIRDERS: TWO REQUIRED FOR 8' and 10' BUILDINGS AND FOUR REQUIRED FOR 12', 14' and 16' BUILDINGS.

MEASURES SHALL BE TAKEN DURING CONSTRUCTION TO INSURE THAT ONLY WORKMANSHIP OF THE HIGHEST QUALITY IS PERFORMED AND THAT ONLY THE BEST MATERIALS AND PRACTICES OF CONSTRUCTION ARE USED FOR A QUALITY AND SOUND BUILDING.

BUILDINGS 14'-0" AND 16'-0" WIDE, STUDS 16" O.C.

NOTE: THE UTILITY FLOORING, WALLS AND ROOF ARE DESIGNED TO COMPLY WITH THE 2003, 2006 AND 2009 INTERNATIONAL BUILDING AND INTERNATIONAL RESIDENTIAL CODES. THEY ARE NOT INTENDED FOR RESIDENTIAL USE. FOR RESIDENTIAL USAGE 'ALL' STATE AND LOCAL CODES MUST BE MET INCLUDING BUT NOT LIMITED TO SIZES, OPENINGS, CEILING HEIGHTS, ELECTRICAL, PLUMBING ETC.

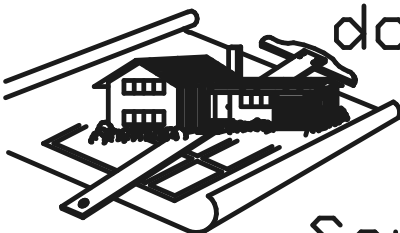
The Barn

WIND CERTIFICATION
WIND EXPOSURE CATEGORY 'C'
BASIC WIND SPEED (3 SECOND GUST) 150 M.P.H.

MISSISSIPPI-LOUISIANA

DAMMON ENGINEERING
1095 FLORIDA AVE.
SLIDELL, LOUISIANA

985 – 649 – 5832



4210 Stewart Lane
Perdido, MS 39573
228/255-5259

doug's
plan
Service

GRACELAND PROPERTIES LLC
P.O. BOX 665
CUNNINGHAM, KY 42035
601 - 799 - 4545

Copyright (C) 2008 by Graceland Properties LLC
All Rights Reserved, including the rights of reproduction in whole or in part in any form.