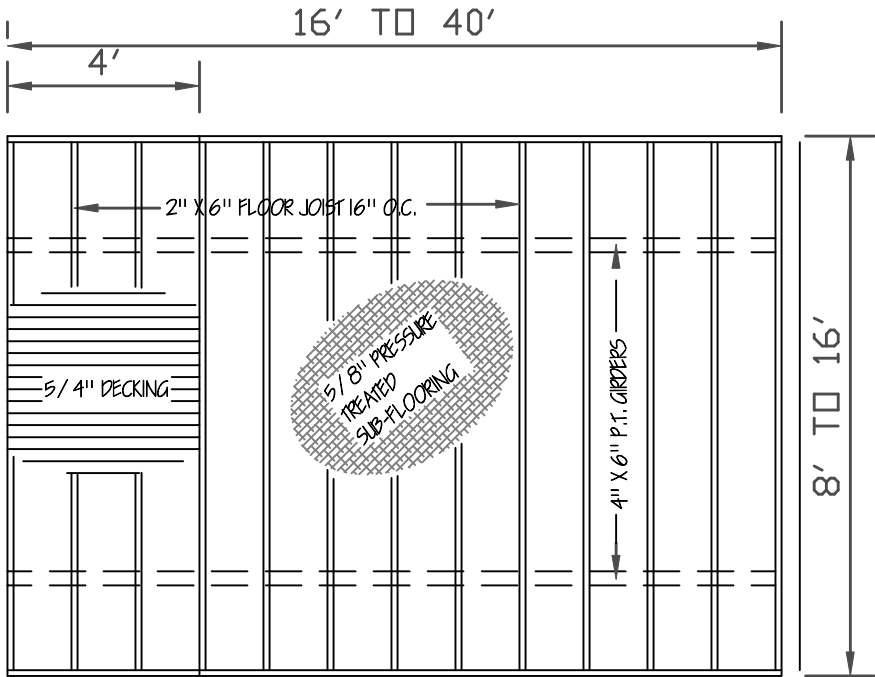
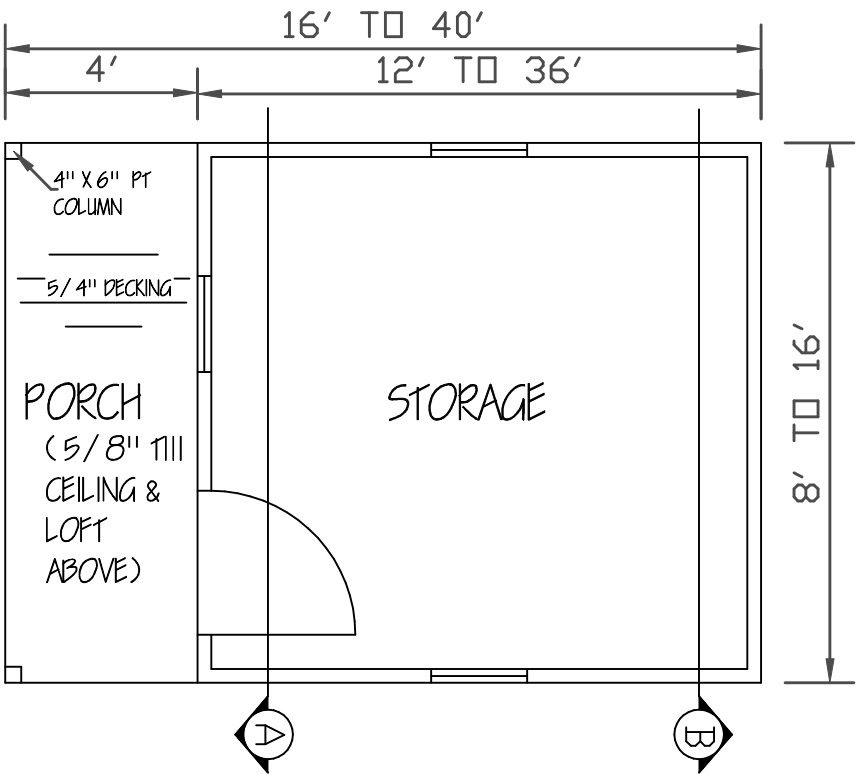


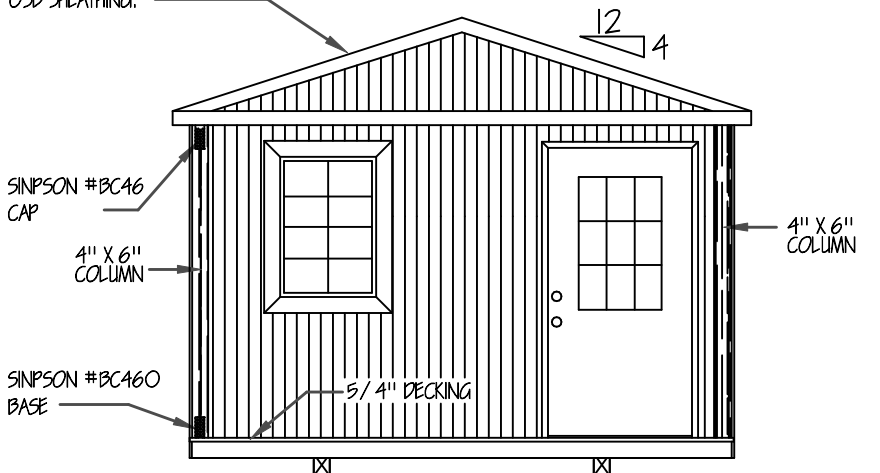
Sides



FLOOR FRAMING



FLOOR PLAN

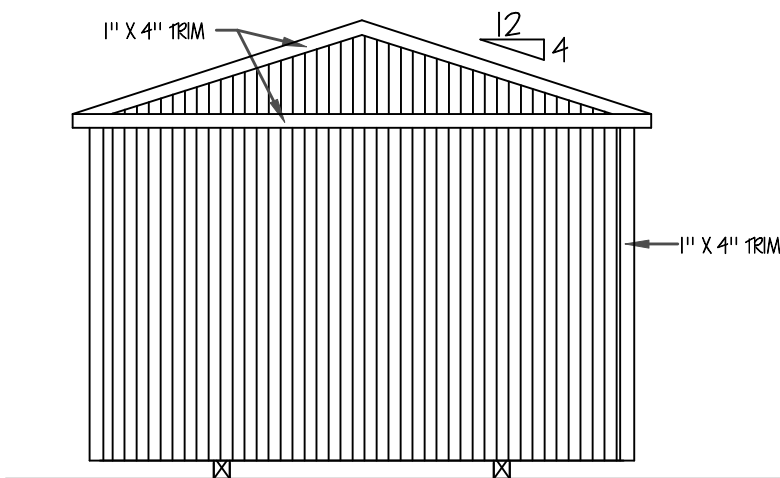


Front

ANCHORS: IRON ROOT DOUBLE HEAD
DOUBLE HELIX EARTH ANCHORS, 30" LONG
BY 3/4" W/ 2-4" HELIX FOR SOIL CLASS 2

GIRDERS: TWO REQUIRED FOR 8'
and 10' BUILDINGS AND FOUR
REQUIRED FOR 12', 14' and 16'
BUILDINGS.

1-1/4" FRAME TIE GALVANIZE STRAP WITH
BUCKLE AND SLOTTED BOLTS CENTERED
BETWEEN EACH PIER



Rear

MEASURES SHALL BE TAKEN DURING CONSTRUCTION
TO INSURE THAT ONLY WORKMANSHIP OF THE HIGHEST QUALITY
IS PERFORMED AND THAT ONLY THE BEST MATERIALS AND
PRACTICES OF CONSTRUCTION ARE USED FOR A QUALITY AND
SOUND BUILDING.
BUILDINGS 14'-0" AND 16'-0" WIDE, STUDS
16" O.C.

NOTE: THE UTILITY FLOORING, WALLS AND ROOF
ARE DESIGNED TO COMPLY WITH THE 2003, 2006
AND 2009 INTERNATIONAL BUILDING AND
INTERNATIONAL RESIDENTIAL CODES. THEY ARE NOT
INTENDED FOR RESIDENTIAL USE. FOR RESIDENTIAL
USAGE 'ALL' STATE AND LOCAL CODES MUST BE MET
INCLUDING BUT NOT LIMITED TO SIZES, OPENINGS,
CEILING HEIGHTS, ELECTRICAL, PLUMBING ETC.

ENGINEERS' NOTES:

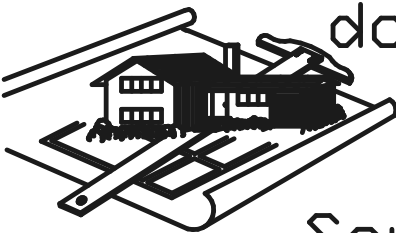
1. FOUNDATIONS PIERS, TIE-DOWNS AND ANCHORS
SHALL MEET THE REQUIREMENTS OF THE
"PERMANENT FOUNDATIONS GUIDE OF
MANUFACTURED HOUSING" AS PUBLISHED BY HUD
IN SEPTEMBER 1996, AND THE HUD HANDBOOK
4145.1 REV. 2.
2. NO FIELD SUPERVISION PROVIDED UNDER THIS SEAL.
3. NO ADMINISTRATION PROVIDED UNDER THIS SEAL.

Cabin

WIND CERTIFICATION
WIND EXPOSURE CATEGORY 'C'
BASIC WIND SPEED (3 SECOND GUST) 150 M.P.H.
MISSISSIPPI-LOUISIANA

DAMMON ENGINEERING
1095 FLORIDA AVE.
SLIDELL, LOUISIANA

985 - 649 - 5832



4210 Stewart Lane
Perkinsston, MS 39573
228/255-3259

doug's
plan
Service

GRACELAND PROPERTIES LLC
P.O. BOX 665
CUNNINGHAM, KY 42035
601 - 799 - 4545

Copyright (C) 2008 by Graceland Properties LLC
All Rights Reserved, including the rights of reproduction in
whole or in part in any form.