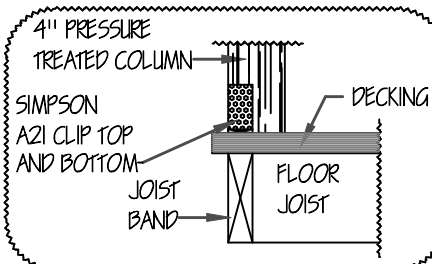
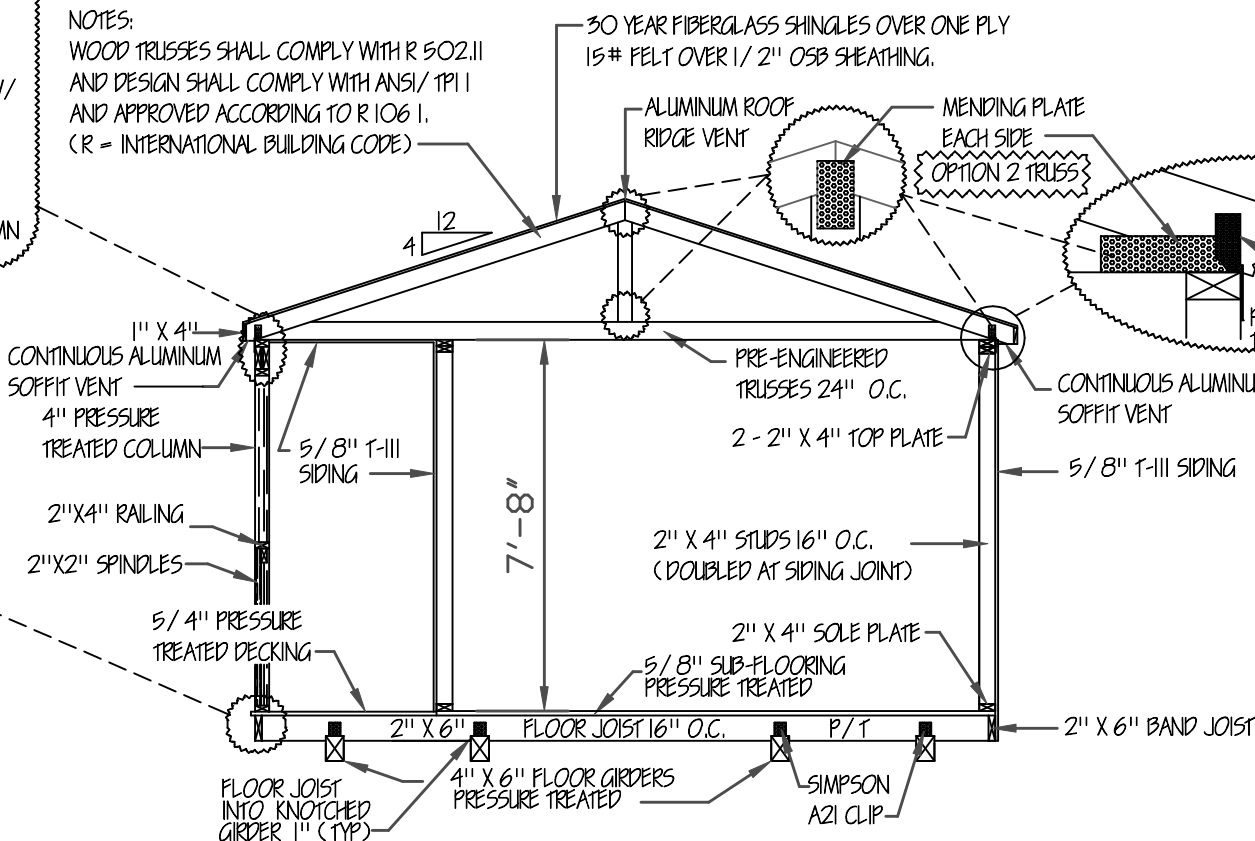


NOTES:  
WOOD TRUSSES SHALL COMPLY WITH R 502.11  
AND DESIGN SHALL COMPLY WITH ANSI/ TP1 I  
AND APPROVED ACCORDING TO R 106 I.  
(R = INTERNATIONAL BUILDING CODE)

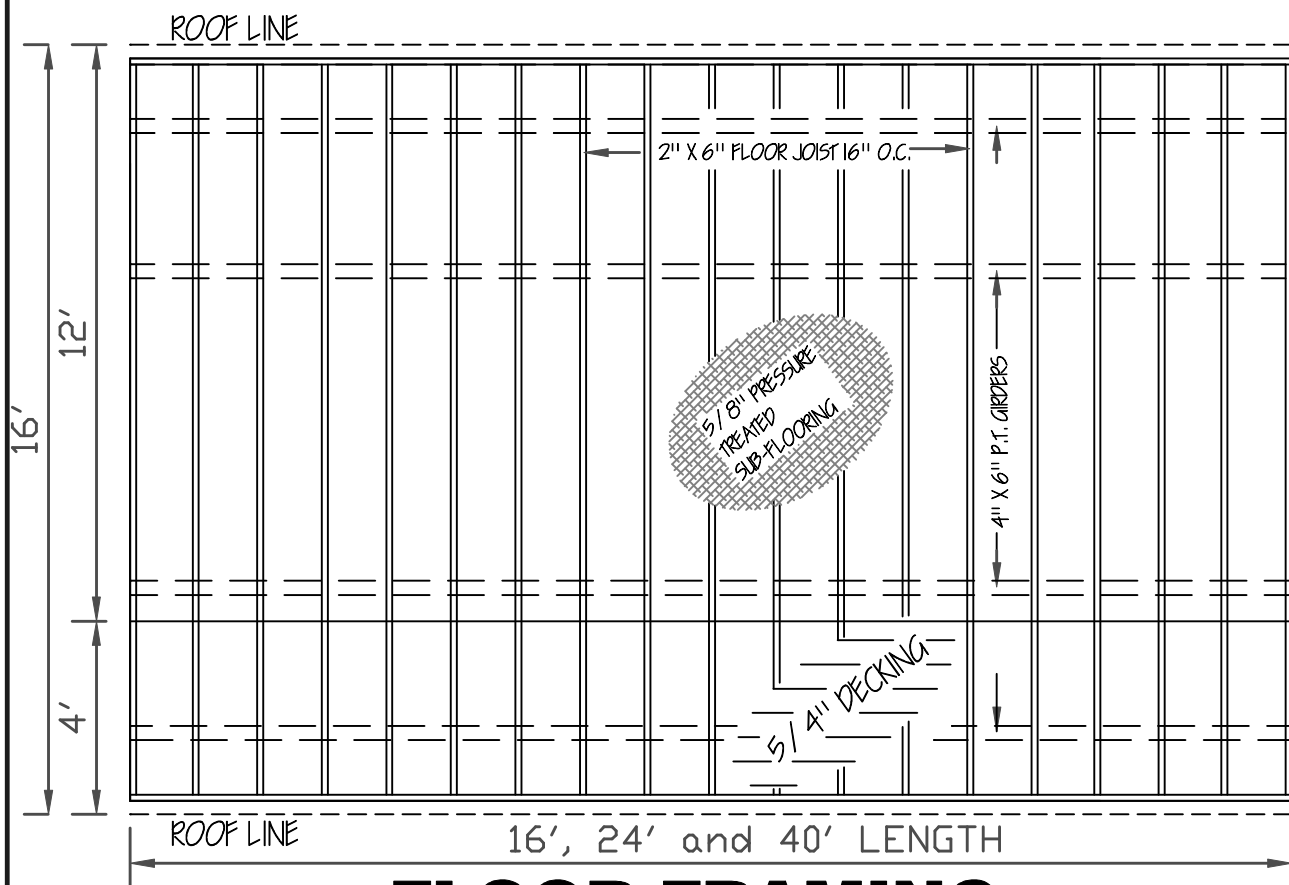


ANCHORS: IRON ROOT DOUBLE HEAD DOUBLE  
HELIX EARTH ANCHORS. 30" LONG BY 3/4" W/  
2-4" HELIX FOR SOIL CLASS 2'  
1-1/4" FRAME TIE GALVANIZE STRAP WITH BUCKLE  
AND SLOTTED BOLTS CENTERED BETWEEN EACH  
PIER. GIRDERS: FOUR REQUIRED

WINDOW HEADERS SHALL BE 2 - 2" X 4" WIDTH VERTICAL  
AND DOORS 2 - 2" X 6" WIDTH VERTICAL

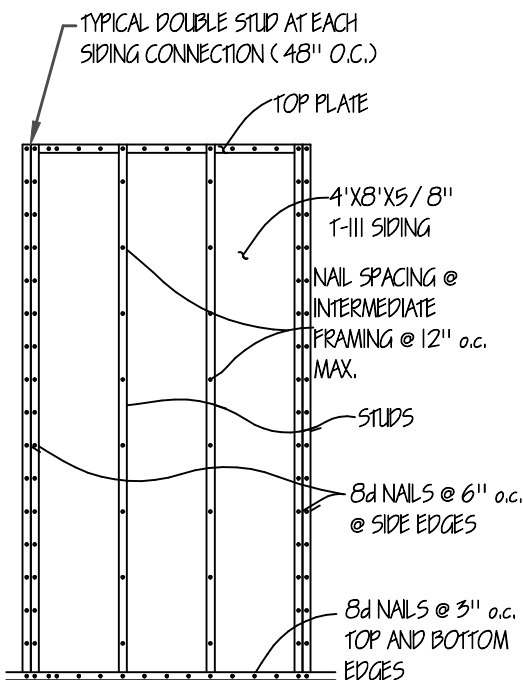


## Typical Section



## FLOOR FRAMING

MEASURES SHALL BE TAKEN DURING CONSTRUCTION  
TO INSURE THAT ONLY WORKMANSHIP OF THE HIGHEST QUALITY  
IS PERFORMED AND THAT ONLY THE BEST MATERIALS AND  
PRACTICES OF CONSTRUCTION ARE USED FOR A QUALITY AND  
SOUND BUILDING.



PLYWOOD SHEATHING PANELS SHALL OVERLAP THE TOP MEMBER  
AND THE BOTTOM PLATE BY 1/2" AND A SINGLE ROW  
OF FASTENERS SHALL BE PLACED 3/4" FROM PANEL EDGE.  
WALL SHEATHING ATTACHMENT

NTS

NOTE: THE UTILITY FLOORING, WALLS AND ROOF  
ARE DESIGNED TO COMPLY WITH THE 2003, 2006  
AND 2009 INTERNATIONAL BUILDING AND  
INTERNATIONAL RESIDENTIAL CODES. THEY ARE NOT  
INTENDED FOR RESIDENTIAL USE. FOR RESIDENTIAL  
USAGE 'ALL' STATE AND LOCAL CODES MUST BE MET  
INCLUDING BUT NOT LIMITED TO SIZES, OPENINGS,  
CEILING HEIGHTS, ELECTRICAL, PLUMBING ETC.

### ENGINEERS' NOTES:

1. FOUNDATIONS PIERS, TIE-DOWNS AND ANCHORS  
SHALL MEET THE REQUIREMENTS OF THE  
"PERMANENT FOUNDATIONS GUIDE OF  
MANUFACTURED HOUSING" AS PUBLISHED BY HUD  
IN SEPTEMBER 1996, AND THE HUD HANDBOOK  
4145.1 REV. 2.
2. NO FIELD SUPERVISION PROVIDED UNDER THIS SEAL.
3. NO ADMINISTRATION PROVIDED UNDER THIS SEAL.

# Side Porch Cabin

MISSISSIPPI-LOUISIANA

**DAMMON ENGINEERING**  
**1095 FLORIDA AVE.**  
**SLIDELL, LOUISIANA**

**985 - 649 - 5832**



**4210 Stewart Lane**  
**Perdinston, MS 39573**  
**228/253-5259**

**doug's**  
**plan**  
**Service**

**GRACELAND PROPERTIES LLC**

P.O. BOX 665  
CUNNINGHAM, KY 42035  
601 - 799 - 4545

Copyright (C) 2008 by Graceland Properties LLC  
All Rights Reserved, including the rights of reproduction in  
whole or in part in any form.