



1095 FLORIDA AVENUE
SLIDELL, LA. 70458
985-649-5832

EMAIL:
DAMMONENG@BELLSOUTH.NET

EXPERT WITNESS

OFFICE PLAN

SLIDELL, LA

PLAN

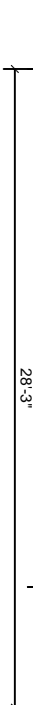
REV:

SCALE: AS NOTED

JOB#: 1880A

SHEET 4

IN



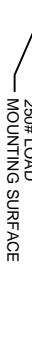
SECTION

SCALE: 1/4"=1'-0" (A2 A2)



HANDRAIL SECTION

SCALE: N.T.S



GENERAL CONSTRUCTION NOTES

1. INSULATION AND INSULATION ASSEMBLES SHALL MEET THE REQUIREMENTS OF SECTION 719.
2. CONCEALED INSULATION SHALL HAVE A FLAME SPREAD OF 0-25 AND SMOKE DEVELOPED INDEX OF 0-450, EXCEPT THAT IN COMBUSTIBLE (WOOD FRAME) CONSTRUCTION,
 - A. FACING SHALL COMPLY WITH IBC 2006.
 - B. FACING SHALL COMPLY WITH IBC 2006.
3. PROVIDE 5x5" LANDING, LEVEL, WITH FINISHED FLOOR, OUTSIDE EXTERIOR DOORS. THRESHOLDS SHALL BE NOT MORE THAN 1/2" IN HEIGHT AND SHALL BE REVELED IF MORE THAN 1/4".
3. DIMENSIONS ARE TO CENTERLINE. FACE OF STUDS, CENTER OF COLUMNS, OR FACE OF VENER.
4. CONTRACTOR TO VERIFY ALL SITE CONDITIONS, BUILDING LOCATIONS, AND DIMENSIONS PRIOR TO CONSTRUCTION.
5. MATERIALS SHALL BE NEW AND U.L. LISTED.
6. NO WORK SHALL BE CONCEALED UNTIL APPROVED BY LOCAL INSPECTORS.
7. CONSTRUCTION SHALL COMPLY WITH ALL PARISH, STATE, AND LOCAL CODES.
8. CONTRACTOR TO GUARANTEE WORK FOR ONE YEAR.
9. CONTRACTOR SHALL FURNISH WATER AND POWER FROM EXISTING SOURCES.
10. CONTRACTOR SHALL GUARANTEE WORK FOR ONE YEAR.
11. PAINT GRADE TO SHALL BE SHERWIN WILLIAMS OR EQUIVALENT. ALL WORK TO RECEIVE 3 COATS, COLOR SELECTION BY OWNER.
12. PROVIDE CLEANUP ON A REGULAR BASIS. NO TRASH STORED IN BUILDING.
13. ALL BATT INSULATION SHALL HAVE A CLASS "X" (0-25) FLAME SPREAD IN COMPLIANCE WITH APPLICABLE CODE.
14. USER'S STUDS OR 4" STAGGERED STUDS AT ALL PLUMBING WALLS.
15. PROVIDE GALVANIZED METAL PAN WITH DRAIN AT WATER HEATER LOCATION.
16. ALL CORNERS SHALL BE PROPERLY BRACED FOR WIND LOADS. A 48" SHEATHING SHALL BE PROVIDED EVERY 20 FEET OF WALL LENGTH.
17. FLOORING SHALL BE NON-SLIP.
18. INTERIOR LOOKS ON DOORS IN MEANS OF EGRESS SHALL NOT REQUIRE THE USE OF A KEY. SPECIAL KNOWLEDGE, OR SPECIAL DEVICE TO OPEN IN THE DIRECTION OF EGRESS. ALL DOORS SHALL HAVE LEVER TYPE HANDLES.
19. INTERIOR WALLS AND CEILING SHALL HAVE A FLAME SPREAD OF 0-200 AND A SMOKE DEVELOPMENT RATING OF 0-450.
20. ALL WORK SHALL COMPLY WITH THE LATEST EDITION OF ALL LOCAL, STATE, AND NATIONAL CODES COVERING THE TYPE OF WORK BEING PERFORMED.
21. PROVIDE PORTABLE FIRE EXTINGUISHERS IN ACCORDANCE WITH NFPA 101. SEE APPENDIX "E" OF NFPA 101 FOR DISTRIBUTION OF EXTINGUISHERS.
22. ALL FIRE WALLS SHALL EXTEND TIGHT TO ROOF SHEATHING, AND BE SEALED WITH AN APPROVED FIRE CAULK.
23. ALL ELECTRICAL, MECHANICAL, AND PLUMBING MATERIALS PENETRATING FIRE WALLS SHALL BE FIRE CAULKED (PENETRATIONS THROUGH RATED CONSTRUCTION SHALL BE SEALED WITH A MATERIAL CAPABLE OF PREVENTING THE PASSAGE OF FLAMES AND HOT GASES WHEN TESTED IN ACCORDANCE WITH ASTM E114).
24. SERVICE COUNTER SHALL HAVE A HOP ACCESSIBLE WRITING SURFACE. MAX. 36" FROM F.F. (ADAAG MANUAL, 1988, PG. 135)

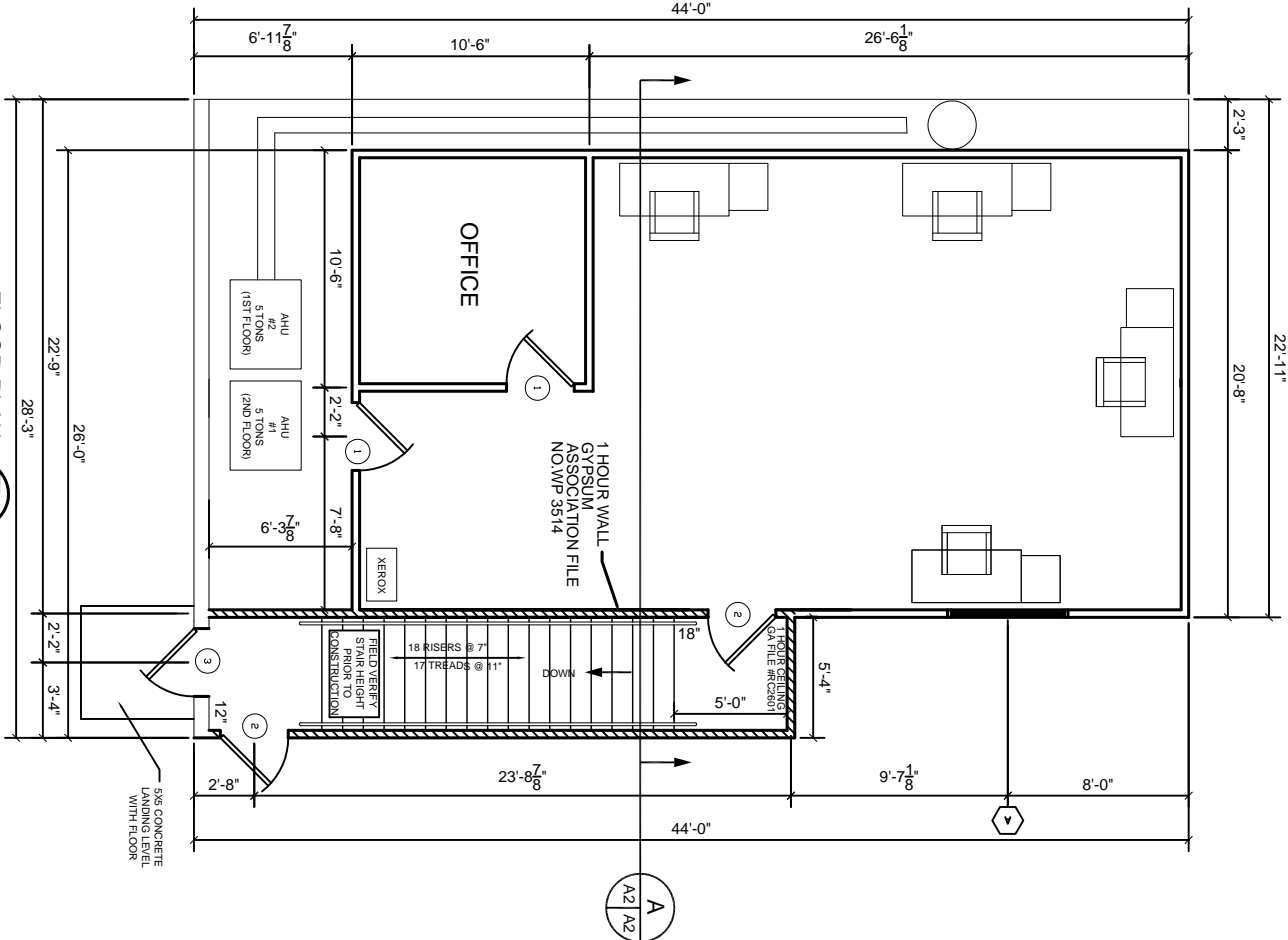
WINDOW SCHEDULE		+	ACROSS	STORIES	REMARKS
TYPE	FRAME	GLASS	LT'S		
● FIXED					
VERTICAL SLIDE					
HORIZ SLIDE					
STEEL					
● ALUMINUM					
WOOD					
TINTED					
● TEMPERED					
WIREGLASS					
● NONE					
2/2					
4/4					
6/6					
8/8					
ALARM					
SCREEN					
SHUTTER					
● NONE					

SECOND FLOOR FINISH SCHEDULE

[illegible]

FIRST & SECOND FLOOR DOOR AND HARDWARE SCHEDULE x

FIRST & SECOND FLOOR DOOR AND HARDWARE SCHEDULE		DOOR		HARDWARE	
NO.	DESCRIPTION	TYPE	FRAME	LOCK	HARDWARE
1	DOORS IN PATH OF EGRESS SHALL BE READILY OPENABLE FROM THE EGRESS SIDE WITHOUT THE USE OF A KEY OR SPECIAL KNOWLEDGE OR EFFORT (IBC 2006 708.1.6)	WOOD			
2	DOORS IN PATH OF EGRESS SHALL BE READILY OPENABLE FROM THE EGRESS SIDE WITHOUT THE USE OF A KEY OR SPECIAL KNOWLEDGE OR EFFORT (IBC 2006 708.1.6)	METAL			
3	DOORS IN PATH OF EGRESS SHALL BE READILY OPENABLE FROM THE EGRESS SIDE WITHOUT THE USE OF A KEY OR SPECIAL KNOWLEDGE OR EFFORT (IBC 2006 708.1.6)	ALUM./GLASS			
4	DOORS IN PATH OF EGRESS SHALL BE READILY OPENABLE FROM THE EGRESS SIDE WITHOUT THE USE OF A KEY OR SPECIAL KNOWLEDGE OR EFFORT (IBC 2006 708.1.6)	STOREFRONT			
5	DOORS IN PATH OF EGRESS SHALL BE READILY OPENABLE FROM THE EGRESS SIDE WITHOUT THE USE OF A KEY OR SPECIAL KNOWLEDGE OR EFFORT (IBC 2006 708.1.6)	STEEL			
6	DOORS IN PATH OF EGRESS SHALL BE READILY OPENABLE FROM THE EGRESS SIDE WITHOUT THE USE OF A KEY OR SPECIAL KNOWLEDGE OR EFFORT (IBC 2006 708.1.6)	ALUMINUM			
7	DOORS IN PATH OF EGRESS SHALL BE READILY OPENABLE FROM THE EGRESS SIDE WITHOUT THE USE OF A KEY OR SPECIAL KNOWLEDGE OR EFFORT (IBC 2006 708.1.6)	WOOD			
8	DOORS IN PATH OF EGRESS SHALL BE READILY OPENABLE FROM THE EGRESS SIDE WITHOUT THE USE OF A KEY OR SPECIAL KNOWLEDGE OR EFFORT (IBC 2006 708.1.6)	DOUBLE SWING			
9	DOORS IN PATH OF EGRESS SHALL BE READILY OPENABLE FROM THE EGRESS SIDE WITHOUT THE USE OF A KEY OR SPECIAL KNOWLEDGE OR EFFORT (IBC 2006 708.1.6)	BUTT			
10	DOORS IN PATH OF EGRESS SHALL BE READILY OPENABLE FROM THE EGRESS SIDE WITHOUT THE USE OF A KEY OR SPECIAL KNOWLEDGE OR EFFORT (IBC 2006 708.1.6)	BURGLER PROOF			
11	DOORS IN PATH OF EGRESS SHALL BE READILY OPENABLE FROM THE EGRESS SIDE WITHOUT THE USE OF A KEY OR SPECIAL KNOWLEDGE OR EFFORT (IBC 2006 708.1.6)	PASSAGE			
12	DOORS IN PATH OF EGRESS SHALL BE READILY OPENABLE FROM THE EGRESS SIDE WITHOUT THE USE OF A KEY OR SPECIAL KNOWLEDGE OR EFFORT (IBC 2006 708.1.6)	PRIVACY			
13	DOORS IN PATH OF EGRESS SHALL BE READILY OPENABLE FROM THE EGRESS SIDE WITHOUT THE USE OF A KEY OR SPECIAL KNOWLEDGE OR EFFORT (IBC 2006 708.1.6)	DEADBOLT			
14	DOORS IN PATH OF EGRESS SHALL BE READILY OPENABLE FROM THE EGRESS SIDE WITHOUT THE USE OF A KEY OR SPECIAL KNOWLEDGE OR EFFORT (IBC 2006 708.1.6)	KEYED HANDLE			
15	DOORS IN PATH OF EGRESS SHALL BE READILY OPENABLE FROM THE EGRESS SIDE WITHOUT THE USE OF A KEY OR SPECIAL KNOWLEDGE OR EFFORT (IBC 2006 708.1.6)	POULTRY			
16	DOORS IN PATH OF EGRESS SHALL BE READILY OPENABLE FROM THE EGRESS SIDE WITHOUT THE USE OF A KEY OR SPECIAL KNOWLEDGE OR EFFORT (IBC 2006 708.1.6)	PANIC BAR			
17	DOORS IN PATH OF EGRESS SHALL BE READILY OPENABLE FROM THE EGRESS SIDE WITHOUT THE USE OF A KEY OR SPECIAL KNOWLEDGE OR EFFORT (IBC 2006 708.1.6)	THRESHOLD			
18	DOORS IN PATH OF EGRESS SHALL BE READILY OPENABLE FROM THE EGRESS SIDE WITHOUT THE USE OF A KEY OR SPECIAL KNOWLEDGE OR EFFORT (IBC 2006 708.1.6)	WEATHERSTRIP			
19	DOORS IN PATH OF EGRESS SHALL BE READILY OPENABLE FROM THE EGRESS SIDE WITHOUT THE USE OF A KEY OR SPECIAL KNOWLEDGE OR EFFORT (IBC 2006 708.1.6)	DOOR STOP			
20	DOORS IN PATH OF EGRESS SHALL BE READILY OPENABLE FROM THE EGRESS SIDE WITHOUT THE USE OF A KEY OR SPECIAL KNOWLEDGE OR EFFORT (IBC 2006 708.1.6)	ALARM			
21	DOORS IN PATH OF EGRESS SHALL BE READILY OPENABLE FROM THE EGRESS SIDE WITHOUT THE USE OF A KEY OR SPECIAL KNOWLEDGE OR EFFORT (IBC 2006 708.1.6)	PEEP HOLE			
22	DOORS IN PATH OF EGRESS SHALL BE READILY OPENABLE FROM THE EGRESS SIDE WITHOUT THE USE OF A KEY OR SPECIAL KNOWLEDGE OR EFFORT (IBC 2006 708.1.6)	CLOSURE			
23	DOORS IN PATH OF EGRESS SHALL BE READILY OPENABLE FROM THE EGRESS SIDE WITHOUT THE USE OF A KEY OR SPECIAL KNOWLEDGE OR EFFORT (IBC 2006 708.1.6)	1 HOUR RATED			



FLOOR PLAN

SCALE: 1/4"=1'-0"




6A FILE NO. WP 3514 **GENERIC**


1 HOUR FIRE 35 to 39 STC SOUND

ONE LAYER 5/8" TYPE X GYPSUM WALLBOARD OR GYPSUM VENEER
OVER 1/2" MINIMUM INSULATION OR ROUGH SURFACE OF CONCRETE
12" O.C. STUDS 16" O.C. WITH 1/4" TYPE D MINIMUM SPACING
12" O.C.

JOINTS STAGGERED 16" ON OPPOSITE SIDES. (LOAD BEARING)



THICKNESS: 4-1/2"
WEIGHT: 7-5/8"
FIRE TEST: SWRI 01-611-619, 8-19-02
SEE WP 3530
(G&H No. 24671, 7-2-66)



GA. FILE NO. RC 2601

GENERIC

WOOD JOISTS, GYPSUM WALLBOARD

1 HOUR FIRE

40 TO 44 STC SOUND

BEST LAYER 5/8" TYPE X GYPSUM WALLBOARD APPLIED AT RIGHT ANGLES TO 2 X 10 WOOD JOISTS 24" O.C. FACE LAYER 5/8" TYPE X GYPSUM WALLBOARD OR GYPSUM VENEER BASE APPLIED AT RIGHT ANGLES TO JOISTS WITH 1/2" TYPE X DRYWALL SHEETING OVER JOISTS. JOISTS OFFSET 24" FROM BASE LAYER JOISTS. END JOISTS SUPPORTING 12" TYPE X DRYWALL ON GYPSUM GUESS. PROVIDE ONE HOUR FIRE RESISTANCE PROTECTION FOR WOOD JOISTS, INCLUDING JOISTS.

APPROX. CEILING WEIGHT:
15 PSF
FIRE TEST:
5 PSF
ASTM E 119, 25-72
ITS 6-98