



DAMON
ENGINEERING, INC.

EMMETT
DAMON

ARCHITECT
ROBERT
SOLBERGER

1095 FLORIDA AVENUE
SLIDELL, LA. 70458
985-649-5832

WEBSITE:
WWW.DAMONENGINEERING.CO
EMAIL:
DAMONENGB@BELLSOUTH.NET

ARCHITECTURE
ENGINEERING
STUDIES
PLANNING
INVESTIGATION
EXPERT WITNESS

TEXTRON
OFFICE PLAN

TEXTRON MARINE
AND LAND
2585 FRONT ST.
SLIDELL, LA

DEMOLITION
SITE
PLAN

REV:

SCALE: AS NOTED

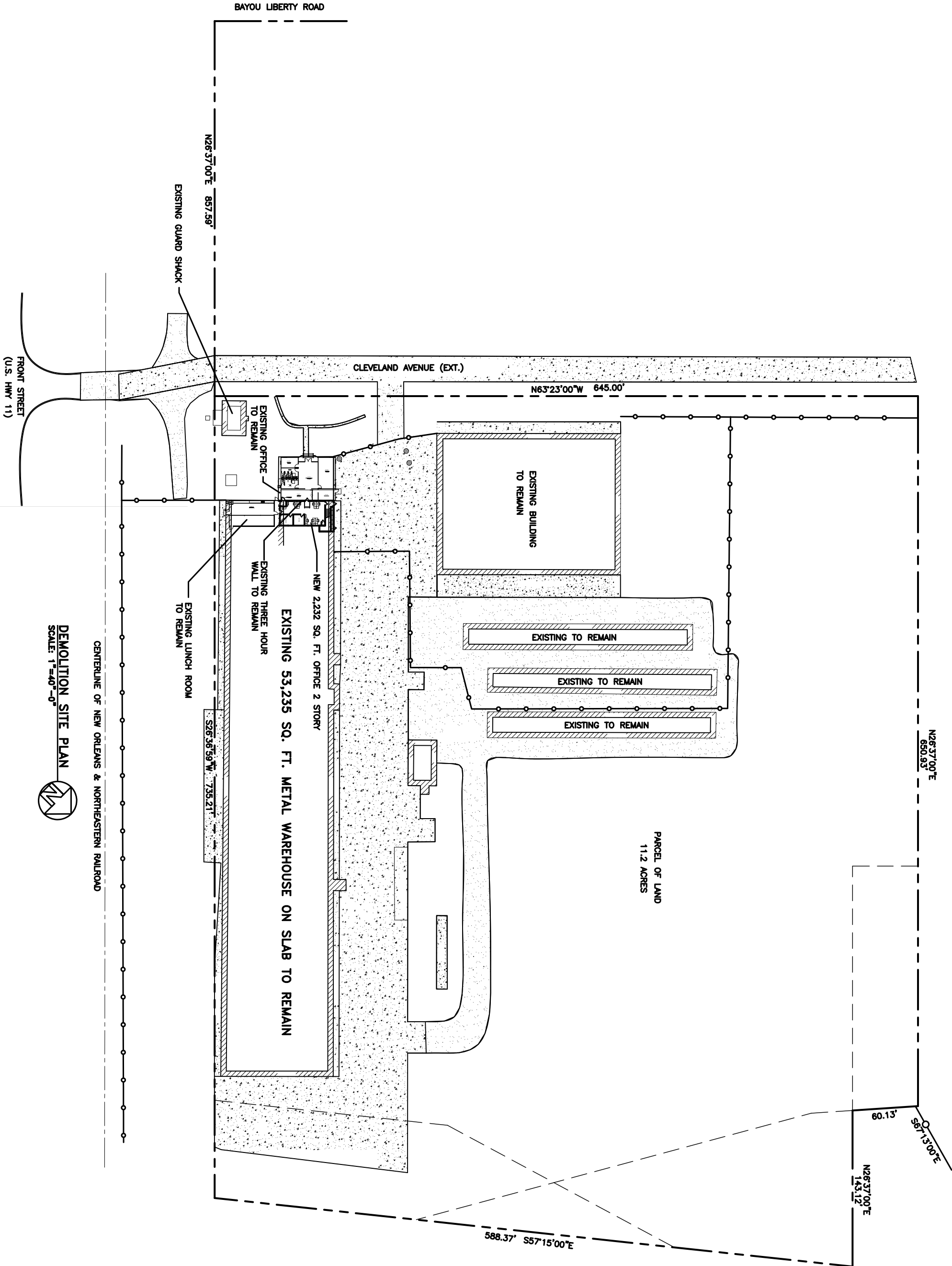
JOB#: 1880

DATE: 8-8-07

SHEET

C-1

OF



CENTERLINE OF NEW ORLEANS & NORTHEASTERN RAILROAD

DEMOLITION SITE PLAN

SCALE: 1"=40'-0"

