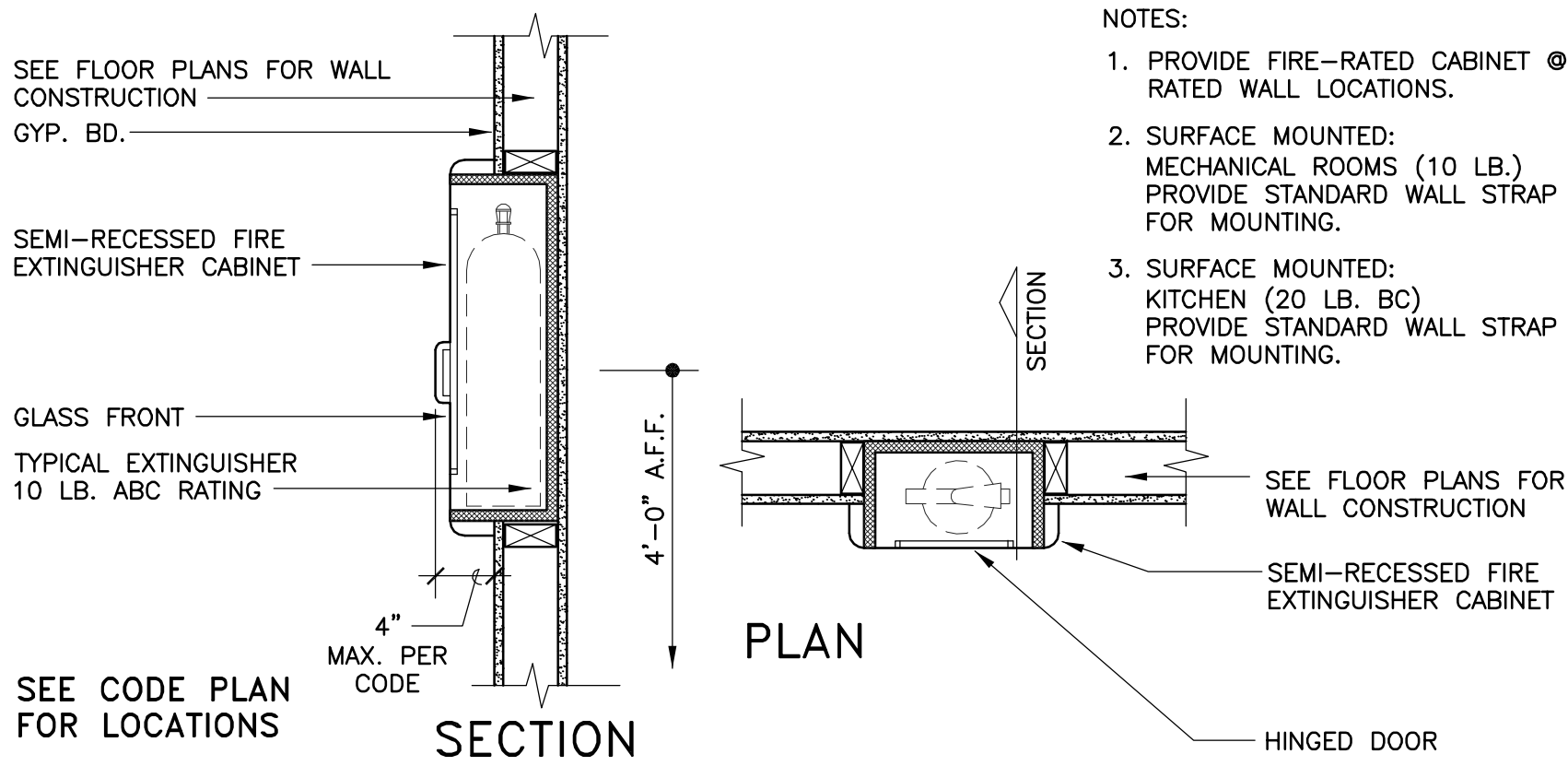


CODE REVIEW	
2006 INTERNATIONAL BUILDING CODE	
1. OCCUPANCY	INSTITUTIONAL GROUP I-2 INTERMEDIATE CARE FACILITY
2. ALLOWABLE BUILDING LIMITATIONS	
TYPE:	V A
FIRE SUPPRESSION:	SPRINKLER - NFPA 13
ALLOWABLE AREA (GROUP I-2)	
ALLOWABLE AREA (TABLE 503):	9,500 S.F.
AREA MODIFICATION - FRONTAGE (506.2)	7,125 S.F.
AREA MODIFICATION - SPRINKLER (506.3)	28,500 S.F.
TOTAL ALLOWABLE AREA (PER FLOOR):	45,500 S.F.
ALLOWABLE STORIES (TABLE 503 AND SEC. 504.2)*	
ALLOWABLE HEIGHT (TABLE 503 AND SEC. 504.2)*	1 50'
*NO MODIFICATION ALLOWED 504.2 EXCEPTION 1	
3. PROPOSED BUILDING PROPERTIES	
BUILDING AREA	41 LIVING UNITS 31,857 S.F.
PORTE-COCHERE	630 S.F.
COVERED PATIOS	590 S.F.
KITCHEN PORCH	71 S.F.
NO. OF STORIES	1
ROOF HEIGHT:	26' +/-
4. FIRE RESISTANCE RATINGS: (TABLES 601, 602)	
STRUCTURAL FRAME	1 HOUR
BEARING WALLS	
EXTERIOR	1 HOUR
INTERIOR	1 HOUR
NON-BEARING WALLS AND PARTITIONS	
30' AND OVER	0 HOUR
INTERIOR	0 HOUR
FLOOR CONSTRUCTION	1 HOUR
LESS THAN 20' A.F.F.	
ROOF CONSTRUCTION	1 HOUR
CORRIDORS (TABLE 1017.1)	0 HOUR
SPRINKLER SYSTEM REQUIRED	

5. INTERIOR FINISHES (TABLE 803.5)	
EXIT ENCLOSURES, EXIT PASSAGEWAYS	B
CORRIDORS	B
ROOMS AND ENCLOSED SPACES	B
ADMINISTRATIVE SPACES (H)	C
ROOMS WITH 4 PERSONS OR LESS (I)	C
FLOORS - EXITS AND CORRIDORS (804.4.1)	CLASS II
6. OCCUPANT LOAD (TABLE 1004.1.2)	
INSTITUTIONAL AREAS	120 S.F./PERSON GROSS
GROSS FLOOR AREA (INSIDE EXTERIOR WALL)	30,106 S.F.
OCCUPANT LOAD	251
SPRINKLER	REQUIRED (SECTION 903.2.5) NFPA 13
FIRE ALARM	REQUIRED (SECTION 907.2.6.2)
7. MEANS OF EGRESS	
REQUIRED EXITS (TABLE 1019.1)	2
MAXIMUM TRAVEL DISTANCE TO EXIT (1016.1)	200'
MAXIMUM DEAD-END CORRIDOR (1017.3)	20'
EGRESS WIDTH PER PERSON (TABLE 1005.1)	0.20"
MINIMUM CORRIDOR WIDTH (1017.2)	44"
CORRIDOR FIRE-RESISTANCE RATING	0 HOUR
SPRINKLERED (TABLE 1017.1)	
MINIMUM CLEAR DOOR OPENING WIDTH (1008.1.1)	32"
8. ACCESSIBILITY	
ACCESSIBLE UNITS (MIN. 10% - 1107.5.3)	5
TYPE B UNITS (1107.5.3.2)	ALL OTHERS
9. OTHER ITEMS	
SECTION 903.3.2 QUICK-RESPONSE OR RESIDENTIAL AUTOMATIC SPRINKLERS THROUGHOUT ALL SPACES WITHIN A SMOKE COMPARTMENT CONTAINING PATIENT SLEEPING UNITS IN GROUP I-2	



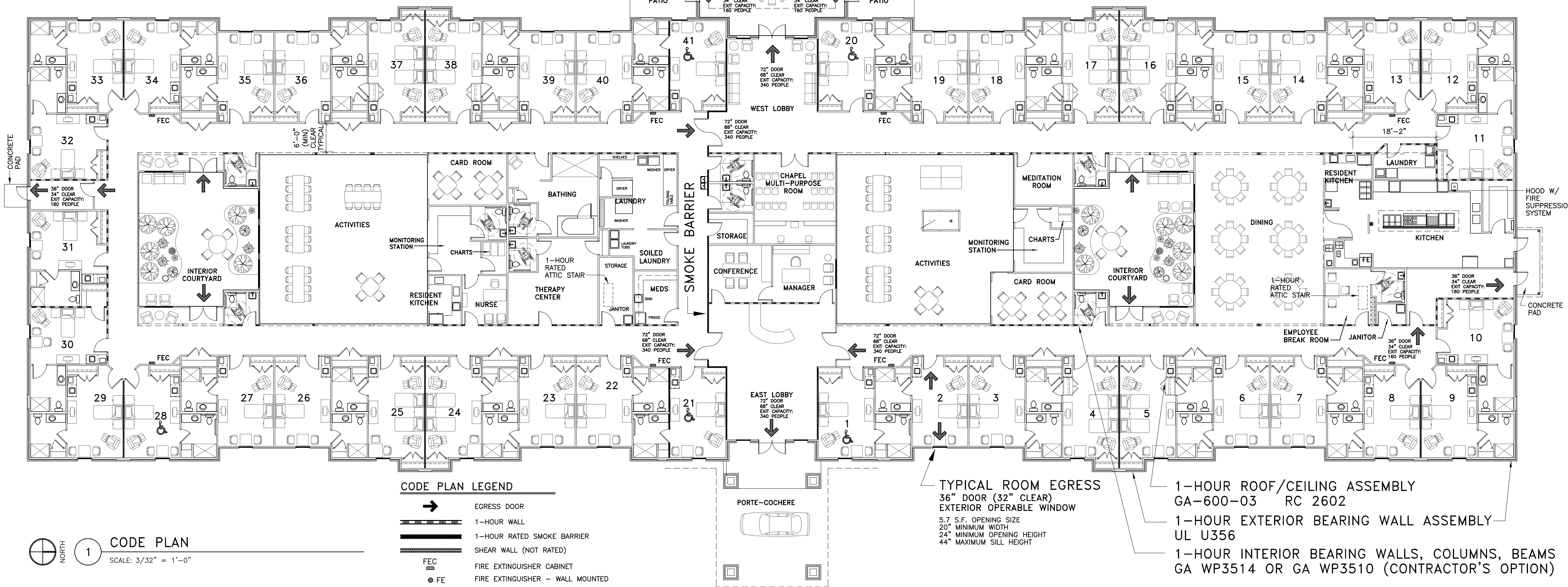
2 FIRE EXTINGUISHER CABINET
SCALE: 1" = 1'-0"

CODE REVIEW	
2006 NFPA 101 - LIFE SAFETY CODE	
1. OCCUPANCY	NEW HEALTH CARE LIMITED CARE FACILITY
2. ALLOWABLE BUILDING LIMITATIONS	
TYPE:	V (111)
FIRE SUPPRESSION (18.3.5.1):	SPRINKLER - NFPA 13
ALLOWABLE AREA (NFPA 5000)	
ALLOWABLE AREA (TABLE 7.4.1):	9,500 S.F.
AREA MODIFICATION - FRONTAGE (7.6)	7,125 S.F.
AREA MODIFICATION - SPRINKLER (7.6.2.2)	28,500 S.F.
TOTAL ALLOWABLE AREA (PER FLOOR):	41,125 S.F.
ALLOWABLE STORIES (18.1.6.4)	
ALLOWABLE HEIGHT	1 70'
3. PROPOSED BUILDING PROPERTIES	
BUILDING AREA	41 LIVING UNITS 31,857 S.F.
PORTE-COCHERE	630 S.F.
COVERED PATIOS	590 S.F.
KITCHEN PORCH	71 S.F.
NO. OF STORIES	1
ROOF HEIGHT:	26' +/-
4. FIRE RESISTANCE RATINGS: (NFPA 5000 - TABLE 7.2.1.1)	
STRUCTURAL FRAME	1 HOUR
BEARING WALLS	
EXTERIOR (TABLE 7.3.2.1)	0 HOUR
INTERIOR	1 HOUR
NON-BEARING WALLS AND PARTITIONS	
EXTERIOR 30' AND OVER	0 HOUR
INTERIOR	0 HOUR
FLOOR-CEILING CONSTRUCTION	1 HOUR
ROOF-CEILING CONSTRUCTION	1 HOUR

5. OCCUPANT LOAD (TABLE 7.3.1.2)	
INSTITUTIONAL AREAS	120 S.F./PERSON
GROSS FLOOR AREA (INSIDE EXTERIOR WALL)	30,106 S.F.
OCCUPANT LOAD	251
SPRINKLER	REQUIRED (18.3.5.1)
FIRE ALARM	REQUIRED (18.3.4.1)
6. MEANS OF EGRESS (CHAPTERS 7, 32)	
REQUIRED EXITS (7.4.1.1)	2
MAXIMUM TRAVEL DISTANCE TO EXIT (18.2.6.2.3)	200'
MAXIMUM DEAD-END CORRIDOR (18.2.5.2)	30'
MINIMUM CORRIDOR WIDTH (18.2.3.5)	72"
EXIT ACCESS CORRIDOR FIRE-RESISTANCE RATING	1 HOUR
SPRINKLERED (7.1.3.1)	
MINIMUM CLEAR DOOR OPENING WIDTH (7.2.1.2.4)	32"
LEVEL EXIT WIDTH PER PERSON (TABLE 7.3.3.1)	.20
7. SEPARATIONS AND RATINGS (CHAPTER 32)	
CENTRAL/BULK LAUNDRIES > 100 S.F. (TABLE 18.3.2.1)	1 HOUR
SOILED LINEN ROOMS (TABLE 18.3.2.1)	1 HOUR
STORAGE ROOMS W/ COMBUSTIBLES (TABLE 18.3.2.1)	
50 S.F. - 100 S.F.	SMOKE PARTITION
> 100 S.F.	1 HOUR
CORRIDOR WALLS (18.3.6.2)	0 HOUR
SMOKE COMPARTMENTS REQUIRED (18.3.7.1)	2
MAXIMUM SMOKE COMPARTMENTS SIZE (18.3.7.1)	22,500 S.F.
SMOKE BARRIER FIRE RESISTANCE RATING (18.3.7.1)	1 HOUR
8. INTERIOR FINISHES (18.3.3.2)	
(WITH SPRINKLER MODIFICATION PER 10.2.8.1)	
INTERIOR WALLS AND CEILING	B
EXIT ENCLOSURES, EXIT PASSAGEWAYS	B
CORRIDORS (FINISH LESS THAN 48" A.F.F.)	C
ROOMS WITH 4 OR LESS PERSONS	C
INTERIOR FLOOR FINISHES (EXITS, CORRIDORS)	CLASS I OR II

SMOKE COMPARTMENT (SOUTH SIDE) 14,429 S.F.
SMOKE COMPARTMENT (NORTH SIDE) 17,397 S.F.

BUILDING AREA: 31,857 SQ.FT.
ROOMS: 41



CODE PLAN LEGEND	
→	EGRESS DOOR
—	1-HOUR WALL
—	1-HOUR RATED SMOKE BARRIER
—	SHEAR WALL (NOT RATED)
FEC	FIRE EXTINGUISHER CABINET
● FE	FIRE EXTINGUISHER - WALL MOUNTED

NOTES:
1. PAINTING CONTRACTOR TO STENCIL ABOVE CEILINGS ON ALL RATED WALLS "FIRE AND SMOKE BARRIER. PROTECT ALL OPENINGS"

Randal L. Groninger
Architect
P.O. Box 533
Bagdad, Florida 32530
850.626.6955
Louisiana #3502

ANDERSON MEMORY CARE
AT SUMMERFIELD
4104 DAUPHINE STREET
SLIDELL, LOUISIANA

DATE: 25 JUNE 2010
PROJECT: 10-181

PRELIMINARY
NOT FOR CONSTRUCTION