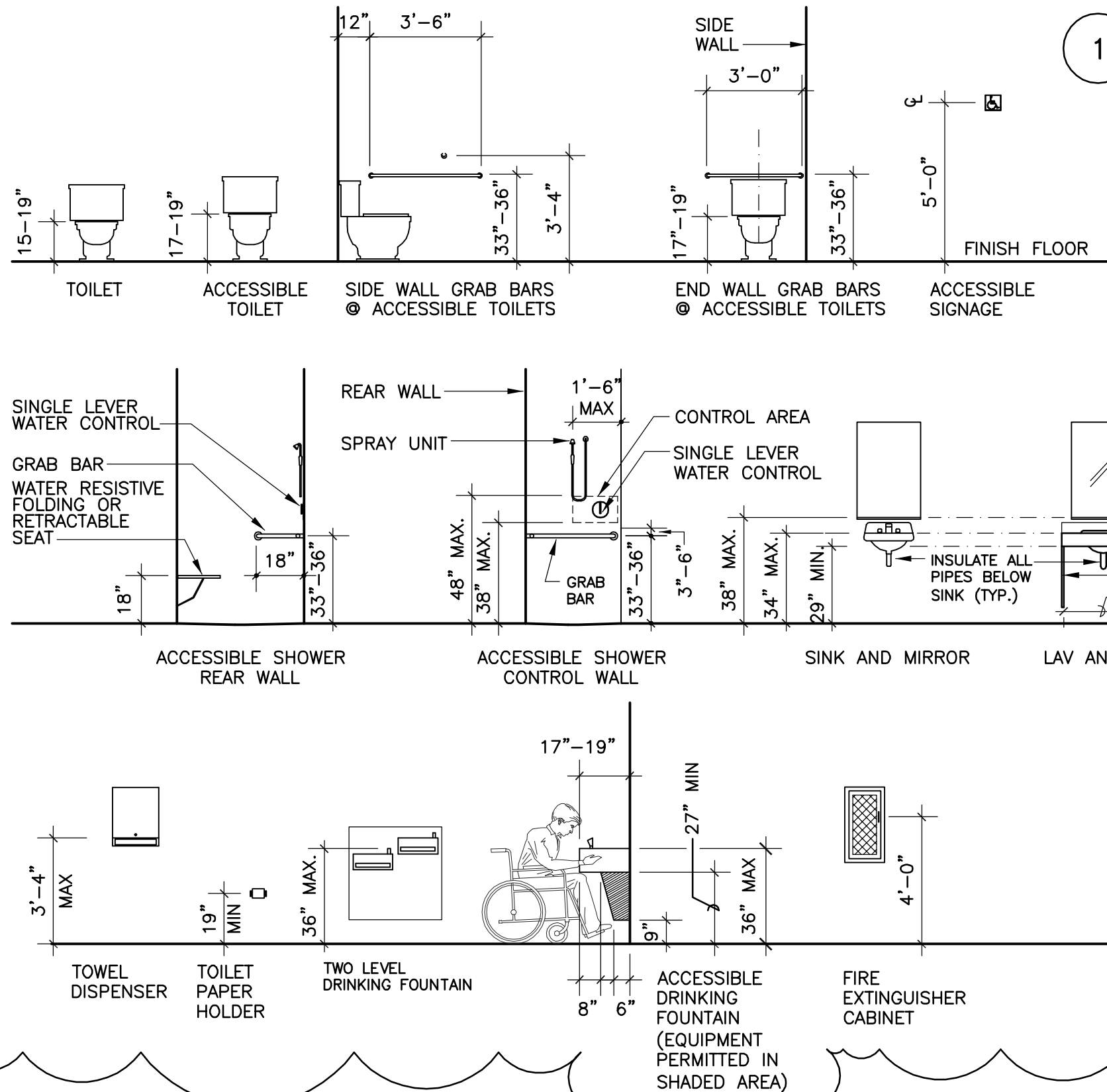


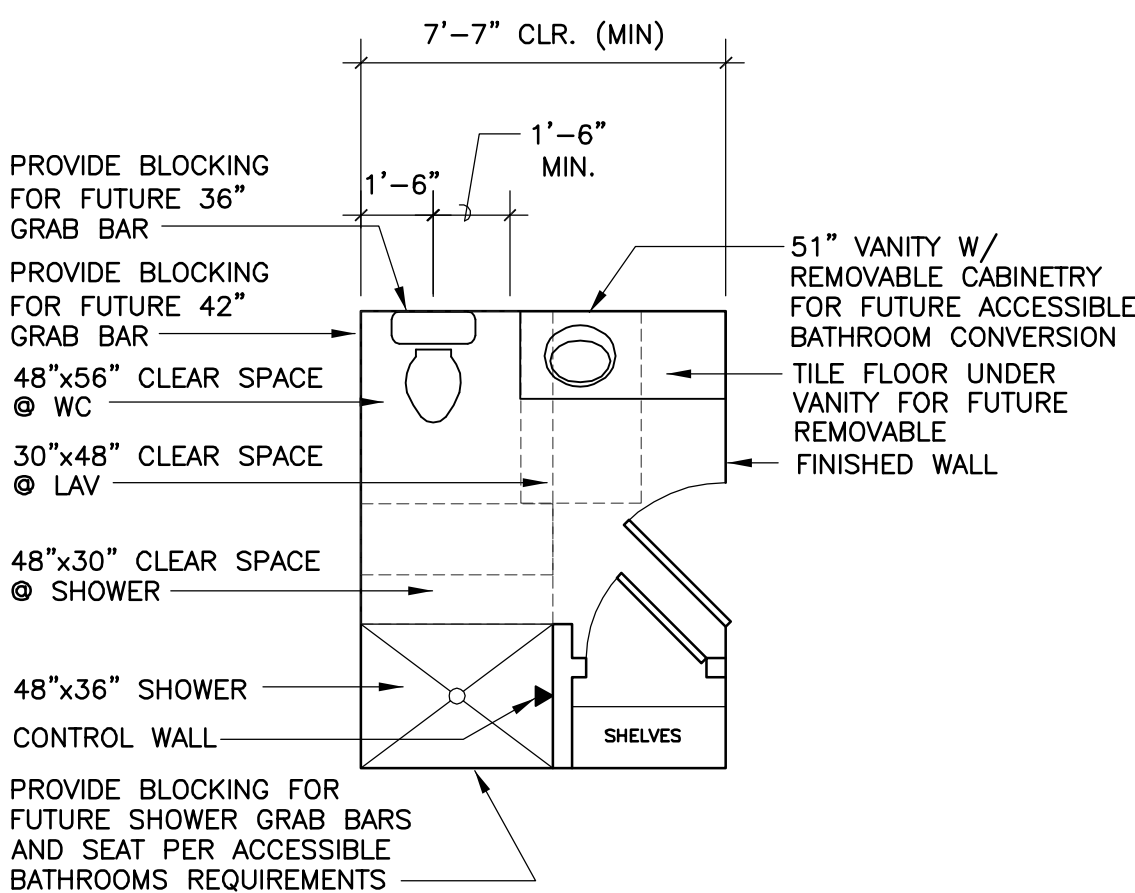
PUBLIC RESTROOM CLEARANCES

FIXTURE AND ACCESSORY HEIGHTS



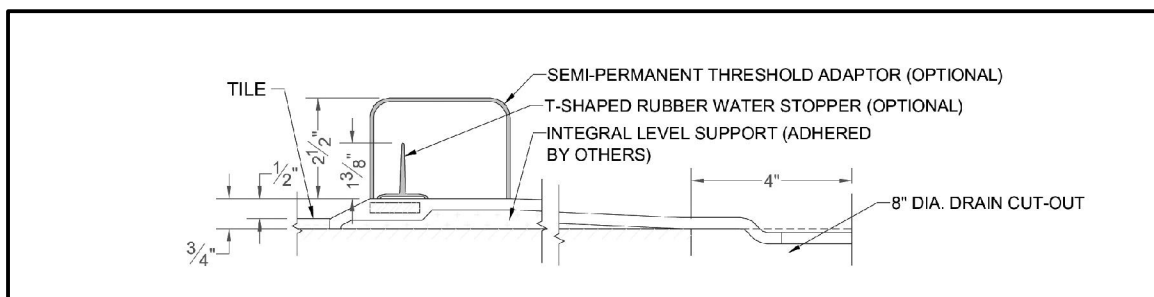
RESTROOM CLEARANCES

SCALE: 1/4" = 1'-0"



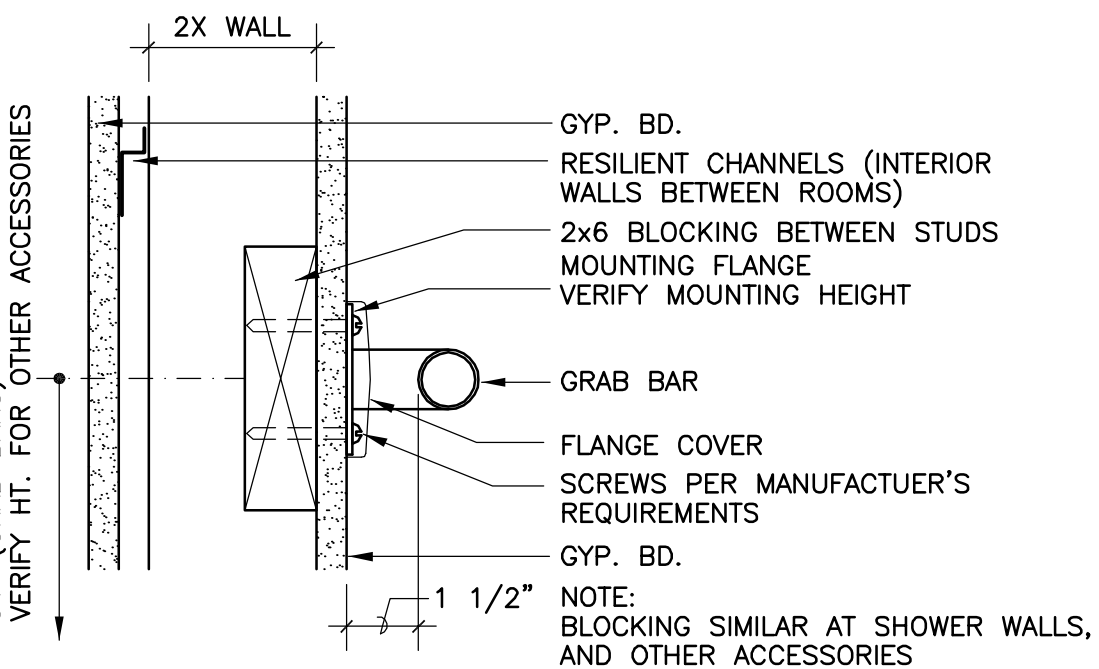
TYPE B UNIT BATHROOM CLEARANCES (OPTION A)

36 UNITS



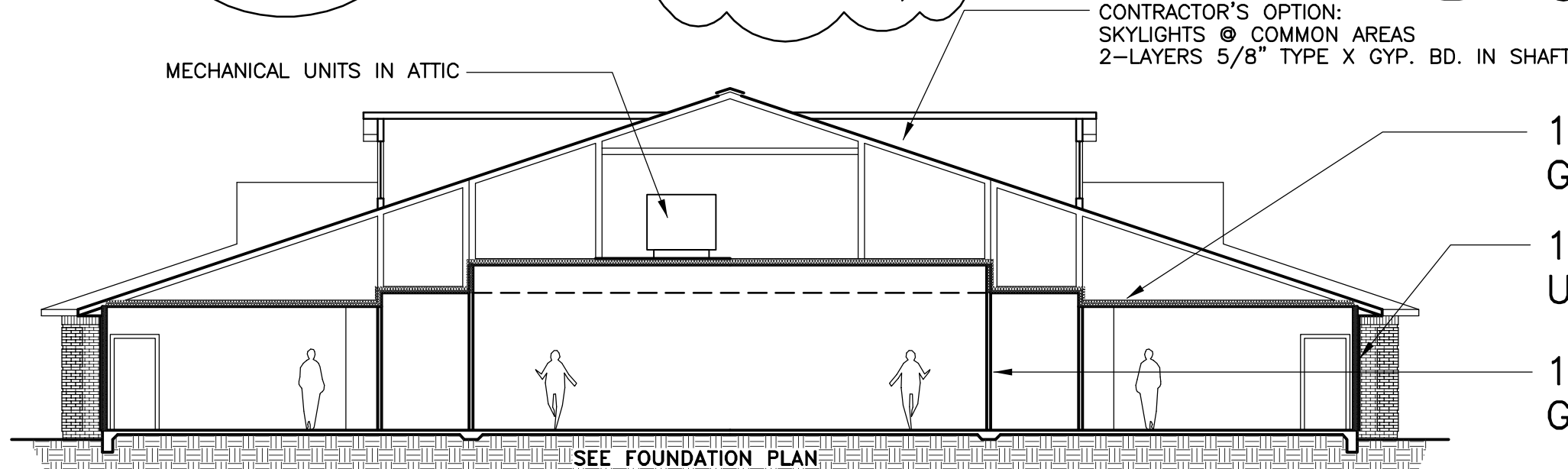
ROLL-IN SHOWER THRESHOLD

SCALE: N.T.S.



GRAB BAR BLOCKING DETAIL

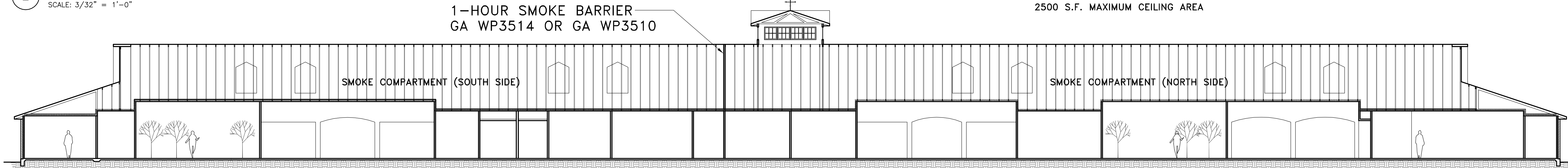
SCALE: 3" = 1'-0"



TRANSVERSE CODE SECTION

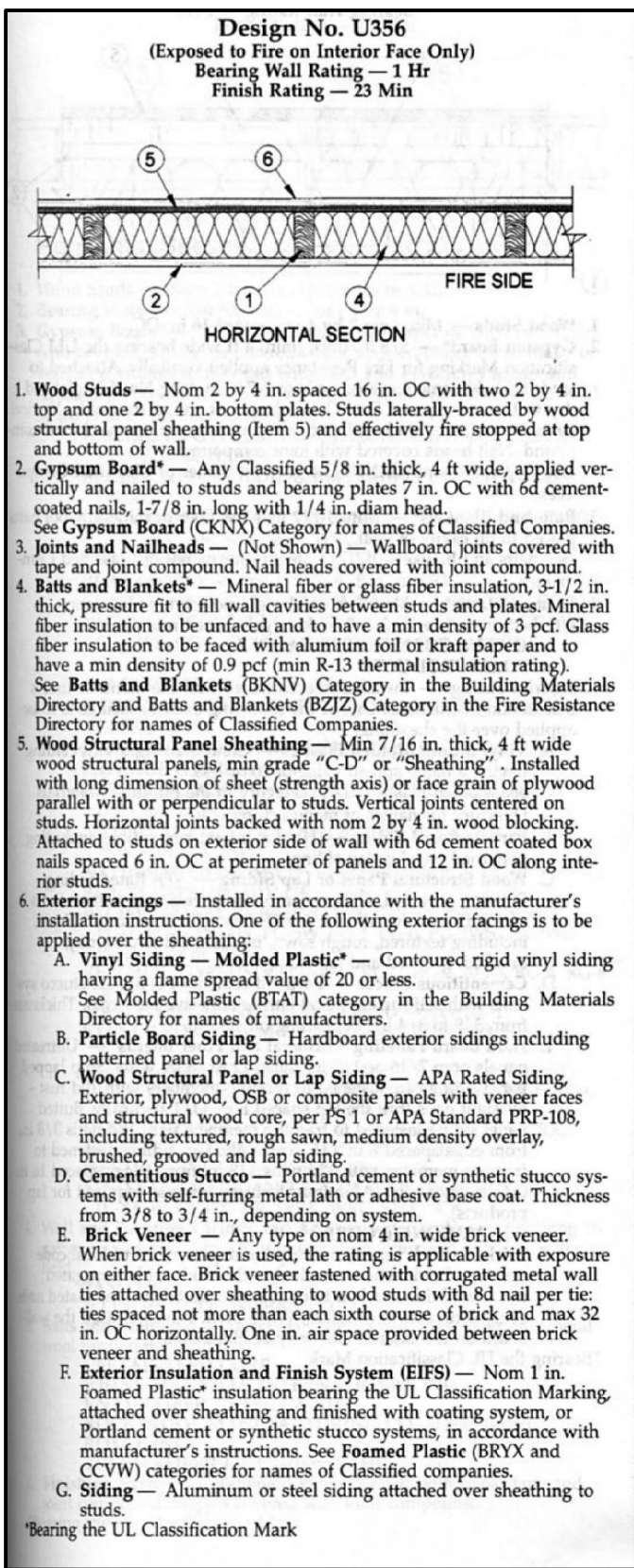
SCALE: 3/32" = 1'-0"

1-HOUR SMOKE BARRIER GA WP3514 OR GA WP3510



LONGITUDINAL CODE SECTION

SCALE: 3/32" = 1'-0"

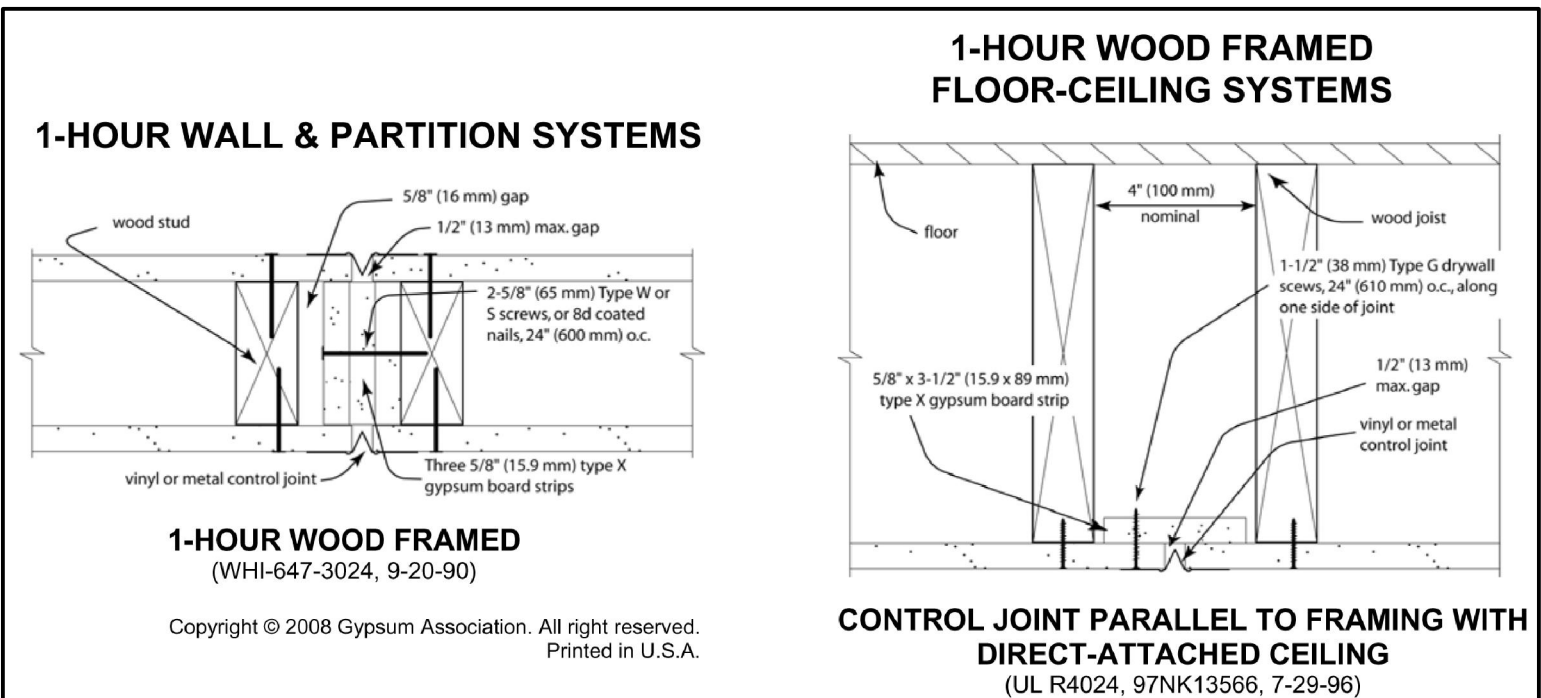
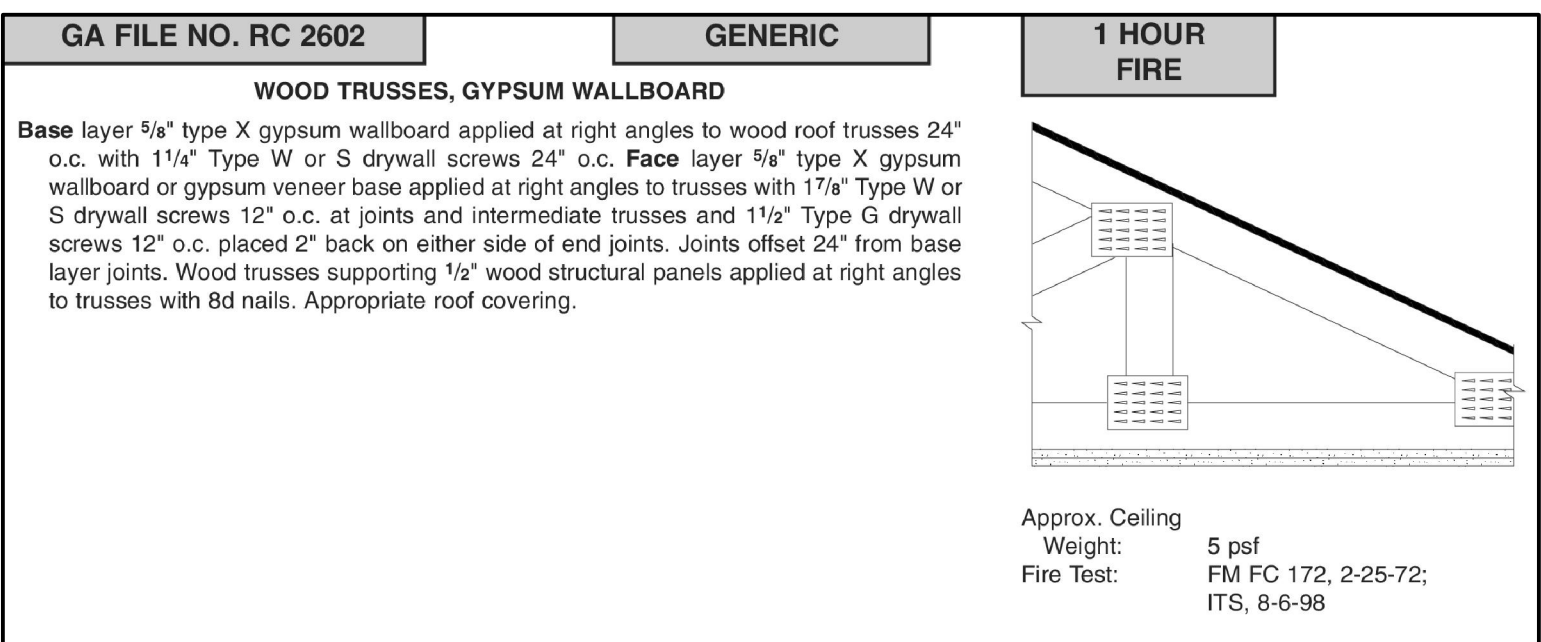


GA FILE NO. WP 3510	GENERIC	1 HOUR FIRE	35 to 39 STC SOUND
GYPSUM WALLBOARD, WOOD STUDS			
One layer 5/8" type X gypsum wallboard or gypsum veneer base applied parallel or at right angles to each side of 2 x 4 wood studs 24" o.c. with 6d coated nails, 1 7/8" long, 0.0915" shank, 1/4" heads, 7" o.c.			
Joints staggered 24" on opposite sides. (LOAD-BEARING)			
Thickness: 47/8" Approx. Weight: 7 psf Fire Test: UL R3501-47, -48, 9-17-65, Design U308; UL R1319-129, 7-22-70, UL Design U314 Sound Test: NGC 2404, 10-14-70			
GA FILE NO. WP 3514	GENERIC	1 HOUR FIRE	35 to 39 STC SOUND
GYPSUM WALLBOARD, WOOD STUDS			
One layer 5/8" type X gypsum wallboard or gypsum veneer base applied parallel or at right angles to each side of 2 x 4 wood studs 16" o.c. with 1 1/4" Type W drywall screws 12" o.c.			
Joints staggered 16" on opposite sides. (LOAD-BEARING)			
Thickness: 4 3/4" Approx. Weight: 7 psf Fire Test: SWRI 01-4511-619, 8-19-92 Sound Test: See WP 3520 (G&H NG-246FT, 7-2-65)			

GA FILE NO. WP 3230	GENERIC	1 HOUR FIRE	50 to 54 STC SOUND
GYPSUM WALLBOARD, RESILIENT CHANNELS, GLASS FIBER INSULATION, WOOD STUDS			
Resilient channels 24" o.c. attached at right angles to ONE SIDE of 2 x 4 wood studs 16" o.c. with 6d coated nails, 1 7/8" long, 0.086" shank, 1/4" heads. 1 1/2" x 3" gypsum wallboard filler strips attached to plate at floor line with 6d nails. One layer 5/8" type X gypsum wallboard or gypsum veneer base applied parallel to channels with 1" Type S drywall screws 6" o.c. at horizontal joints and 12" o.c. at intermediate channels. 1 1/2" glass fiber insulation, 0.8 pcf, stapled to studs in stud space.			
OPPOSITE SIDE: One layer 5/8" type X gypsum wallboard or gypsum veneer base applied at right angles to studs with 6d nails 8" o.c.			
End joints staggered 48" on opposite sides. Sound tested with 3 1/2" glass fiber insulation in stud space. (LOAD-BEARING)			
Thickness: 5 5/8" Approx. Weight: 7 psf Fire Test: OSU T-3127, 10-4-65 Sound Test: RAL TL77-138, 5-5-77			

GENERAL NOTES FOR SOUND WALL (WP 3230) CONSTRUCTION:

1. STAGGER ELECTRICAL OUTLETS AND SWITCHES (NOT BACK-TO-BACK)
2. PAINTER TO CAULK ALL WALL JOINTS, WALL PERIMETER, AND OUTLET AND SWITCH PERIMETERS
3. ATTACH RESILIENT CHANNELS PER MANUFACTURER REQUIREMENTS
4. ATTACH GYP. BD. TO RESILIENT CHANNELS PER MANUFACTURER REQUIREMENTS. ASSURE ATTACHMENT SCREWS/NAILS DO NOT CONTACT STUDS



GYP. BD. CONTROL JOINTS

WALLS: 30' MAXIMUM SPACING

CEILINGS: 50' MAXIMUM SPACING OR 2500 S.F. MAXIMUM CEILING AREA