

GENERAL NOTES

1. CONTRACTOR SHALL VERIFY ALL DIMENSIONS AND SITE CONDITIONS, INCLUDING ACTUAL SIZES OF ALL BUILDING ELEMENTS, EQUIPMENT, FIXTURES, ETC. PRIOR TO AND DURING CONSTRUCTION. ANY DISCREPANCIES AND/OR OMISSIONS SHALL BE REPORTED TO THE ARCHITECT, IN WRITING, FOR CLARIFICATION AND/OR CORRECTION BEFORE PROCEEDING WITH WORK. CONTRACTOR SHALL ASSUME ALL RESPONSIBILITY FOR ERRORS THAT ARE NOT REPORTED.

2. ALL DIMENSIONS SHOULD BE READ OR CALCULATED, NEVER SCALED.
3. ALL WORK SHALL BE PERFORMED IN ACCORDANCE WITH ALL APPLICABLE NATIONAL, STATE, AND LOCAL BUILDING CODES, REGULATIONS, AND ENERGY CODES.

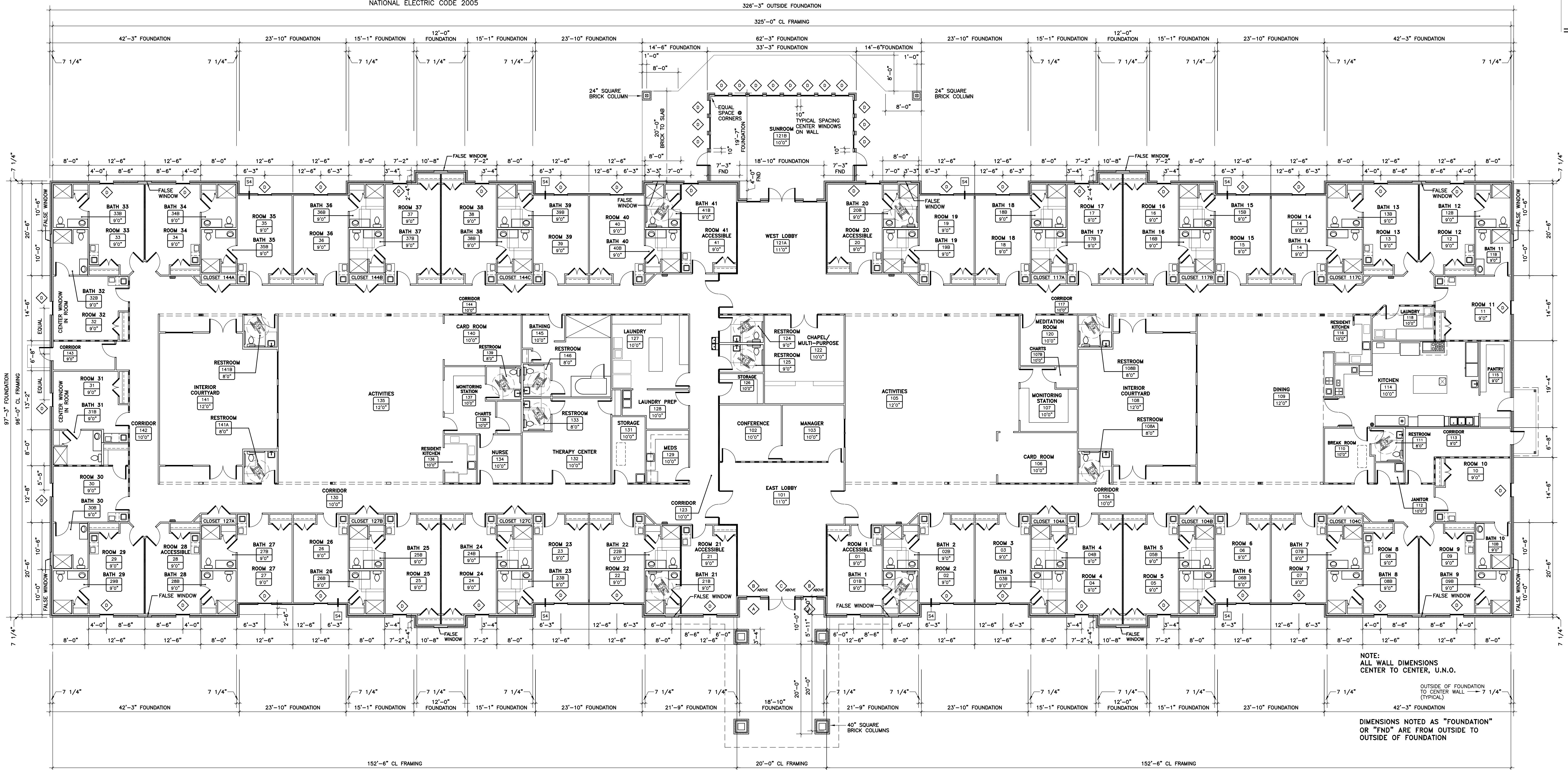
4. CODES USED:
INTERNATIONAL BUILDING CODE 2006
NFPA 101 – LIFE SAFETY CODE 2006
INTERNATIONAL GAS CODE 2006
INTERNATIONAL MECHANICAL CODE 2006
INTERNATIONAL PLUMBING CODE 2006
NATIONAL ELECTRIC CODE 2005

5. WIND LOAD: 130 MPH

Randal L.
Gronger
Architect

P.O. Box 533
Bagdad, Florida 32530
850.626.6955

Louisiana #3502

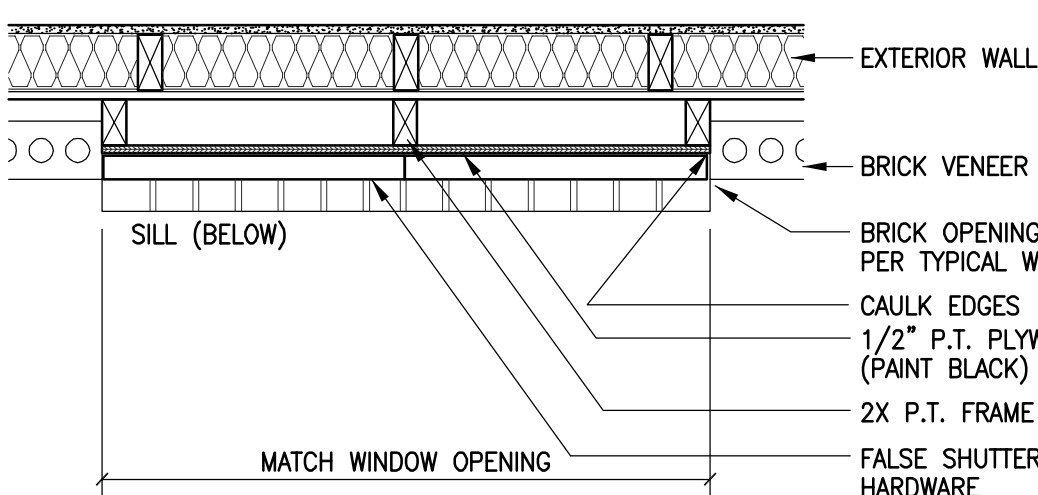


1 FLOOR PLAN – EXTERIOR DIMENSIONS
SCALE: 3/32" = 1'-0"

SEE SHEETS A2.2 AND A2.3 FOR INTERIOR DIMENSIONS

PLAN LEGEND

- 1-HOUR WALL
- 1-HOUR RATED SMOKE BARRIER
- SHEAR WALL



2 FALSE WINDOW DETAIL
SCALE: 1" = 1'-0"

