

FINISH SCHEDULE – PUBLIC SPACES

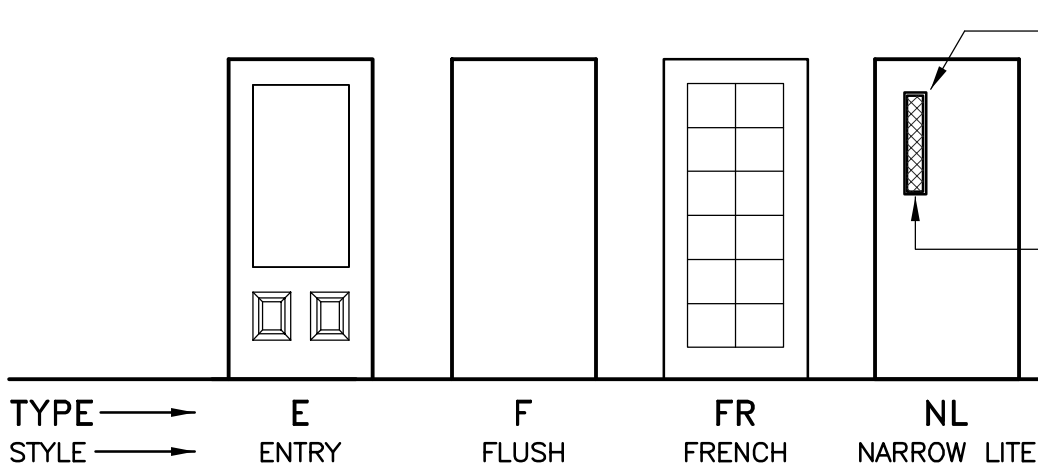
ROOM NO	ROOM NAME	FLOOR FINISH	FLOOR BASE	WALL MAT'L	WALL FINISH	CLG MAT'L	CLG HT	REMARKS
101	EAST LOBBY	CPT	WD	GB	PNT	GB	11'0"	TRAY CEILING
102	CONFERENCE	CPT	WD	GB	PNT	GB	10'0"	—
103	MANAGER	CPT	WD	GB	PNT	GB	10'0"	—
104	CORRIDOR	CPT	WD	GB	PNT	GB	10'0"	—
104A	CLOSET	CPT	RBR	GB	PNT	GB	9'0"	—
104B	CLOSET	CPT	RBR	GB	PNT	GB	9'0"	—
104C	CLOSET	CPT	RBR	GB	PNT	GB	9'0"	—
105	ACTIVITIES	CPT	WD	GB	PNT	GB	12'0"	TRAY CEILING
106	CARD ROOM	CPT	WD	GB	PNT	GB	10'0"	—
107	MONITORING STATION	CPT	WD	GB	PNT	GB	10'0"	—
107B	CHARTS	VCT	RBR	GB	PNT	GB	10'0"	—
108	INTERIOR COURTYARD	CPT	WD	GB	PNT	GB	12'0"	TRAY CEILING
108A	RESTROOM	CT	CT	MRGB	PNT	MRGB	8'0"	—
108B	RESTROOM	CT	CT	MRGB	PNT	MRGB	8'0"	—
109	DINING	CPT	WD	GB	PNT	GB	12'0"	TRAY CEILING
110	BREAK ROOM	CPT	WD	GB	PNT	GB	10'0"	—
111	RESTROOM	CT	CT	MRGB	PNT	MRGB	8'0"	—
112	JANITOR	CPT	WD	GB	PNT	GB	10'0"	—
113	CORRIDOR	CPT	WD	GB	PNT	GB	9'0"	—
114	KITCHEN	CT	CT	GB	PNT	GB	10'0"	—
115	PANTRY	CT	CT	GB	PNT	GB	9'0"	—
116	RESIDENT KITCHEN	CPT	WD	GB	PNT	GB	10'0"	—
117	CORRIDOR	CPT	WD	GB	PNT	GB	10'0"	—
117A	CLOSET	CPT	RBR	GB	PNT	GB	9'0"	—
117B	CLOSET	CPT	RBR	GB	PNT	GB	9'0"	—
117C	CLOSET	CPT	RBR	GB	PNT	GB	9'0"	—
118	LAUNDRY	CT	CT	MRGB	PNT	MRGB	10'0"	—
120	MEDITATION ROOM	CPT	WD	GB	PNT	GB	10'0"	—
121A	WEST LOBBY	CPT	WD	GB	PNT	GB	11'0"	TRAY CEILING
121B	SUNROOM	CPT	WD	GB	PNT	GB	10'0"	TRAY CEILING
122	CHAPEL/MULTI-PURPOSE	CPT	WD	GB	PNT	GB	10'0"	—
123	CORRIDOR	CPT	WD	GB	PNT	GB	10'0"	—
124	RESTROOM	CT	CT	MRGB	PNT	MRGB	9'0"	—
125	RESTROOM	CT	CT	MRGB	PNT	MRGB	9'0"	—
126	STORAGE	CPT	WD	GB	PNT	GB	10'0"	—
127	LAUNDRY	VCT	RBR	MRGB	PNT	MRGB	10'0"	—
127A	CLOSET	CPT	RBR	GB	PNT	GB	9'0"	—
127B	CLOSET	CPT	RBR	GB	PNT	GB	9'0"	—
127C	CLOSET	CPT	RBR	GB	PNT	GB	9'0"	—
128	LAUNDRY PREP	CPT	WD	GB	PNT	GB	10'0"	—
129	MEDS	CT	CT	MRGB	PNT	GB	10'0"	—
130	CORRIDOR	CPT	WD	GB	PNT	GB	10'0"	—
131	STORAGE	VCT	RBR	GB	PNT	GB	10'0"	—
132	THERAPY CENTER	CPT	WD	GB	PNT	GB	10'0"	—
133	RESTROOM	CT	CT	MRGB	PNT	MRGB	8'0"	—
134	NURSE	CPT	WD	GB	PNT	GB	10'0"	—
135	ACTIVITIES	CPT	WD	GB	PNT	GB	12'0"	TRAY CEILING
136	RESIDENT KITCHEN	CT	CT	GB	PNT	GB	10'0"	—
137	MONITORING STATION	CPT	WD	GB	PNT	GB	10'0"	—
138	CHARTS	VCT	RBR	GB	PNT	GB	10'0"	—
139	RESTROOM	CT	CT	MRGB	PNT	MRGB	8'0"	—
140	CARD ROOM	CPT	WD	GB	PNT	GB	10'0"	—
141	INTERIOR COURTYARD	CPT	WD	GB	PNT	GB	12'0"	TRAY CEILING
141A	RESTROOM	CT	CT	MRGB	PNT	MRGB	8'0"	—
141B	RESTROOM	CT	CT	MRGB	PNT	MRGB	8'0"	—
142	CORRIDOR	CPT	WD	GB	PNT	GB	10'0"	—
143	CORRIDOR	CPT	WD	GB	PNT	GB	9'0"	—
144	CORRIDOR	CPT	WD	GB	PNT	GB	10'0"	—
144A	CLOSET	CPT	RBR	GB	PNT	GB	9'0"	—
144B	CLOSET	CPT	RBR	GB	PNT	GB	9'0"	—
144C	CLOSET	CPT	RBR	GB	PNT	GB	9'0"	—
145	BATHING	CT	CT	MRGB	PNT	MRGB	10'0"	—
146	RESTROOM	CT	CT	MRGB	PNT	MRGB	8'0"	—

ROOM FINISH SCHEDULE LEGEND

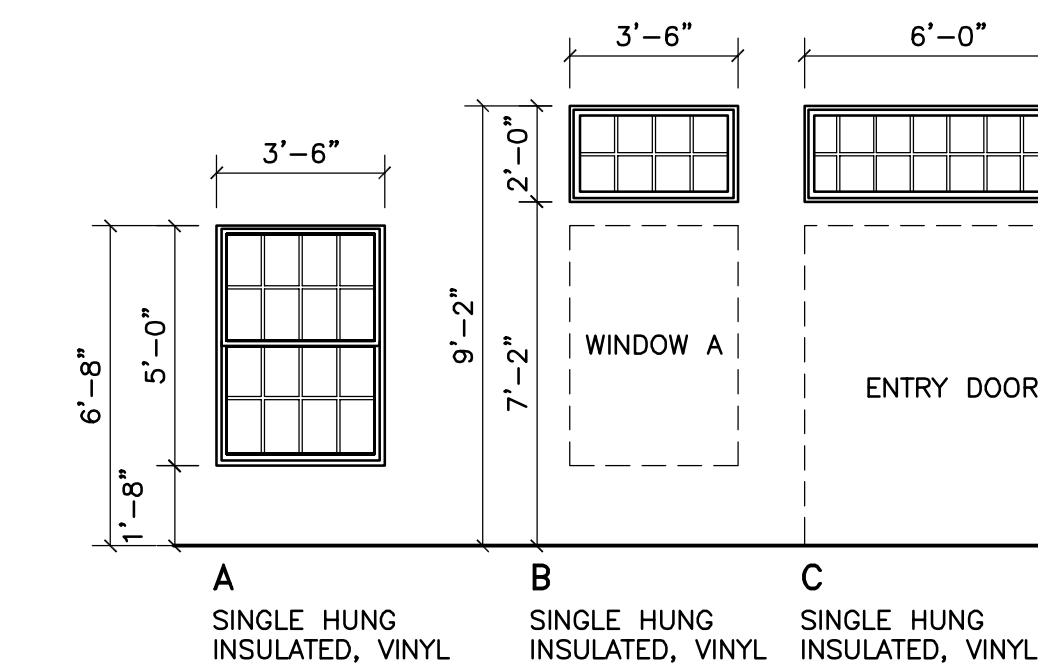
CONC	CONCRETE – SEALED	PL	PLYWOOD – UNFINISHED
CPT	CARPET	PNT	PAINTED
CT	CERAMIC TILE	RBR	RUBBER COVE BASE
EXP	EXPOSED	SAC	SUSPENDED ACOUSTICAL CEILING
GB	GYPSUM BOARD	VCT	VINYL COMPOSITION TILE
MRGB	MOISTURE RESISTANT GYP. BD.	WB	WOOD BASE, PAINTED
NIC	NOT IN CONTRACT		

ROOM FINISH NOTES

- CHANGE IN FLOORING MATERIALS SHALL OCCUR UNDER DOORS, U.N.O.
- ALL CEILINGS: 2-LAYERS 5/8" TYPE X GYP. BOARD



DOOR TYPES
SCALE: 1/4" = 1'-0"



EXTERIOR WINDOW TYPES
SCALE: 1/4" = 1'-0"

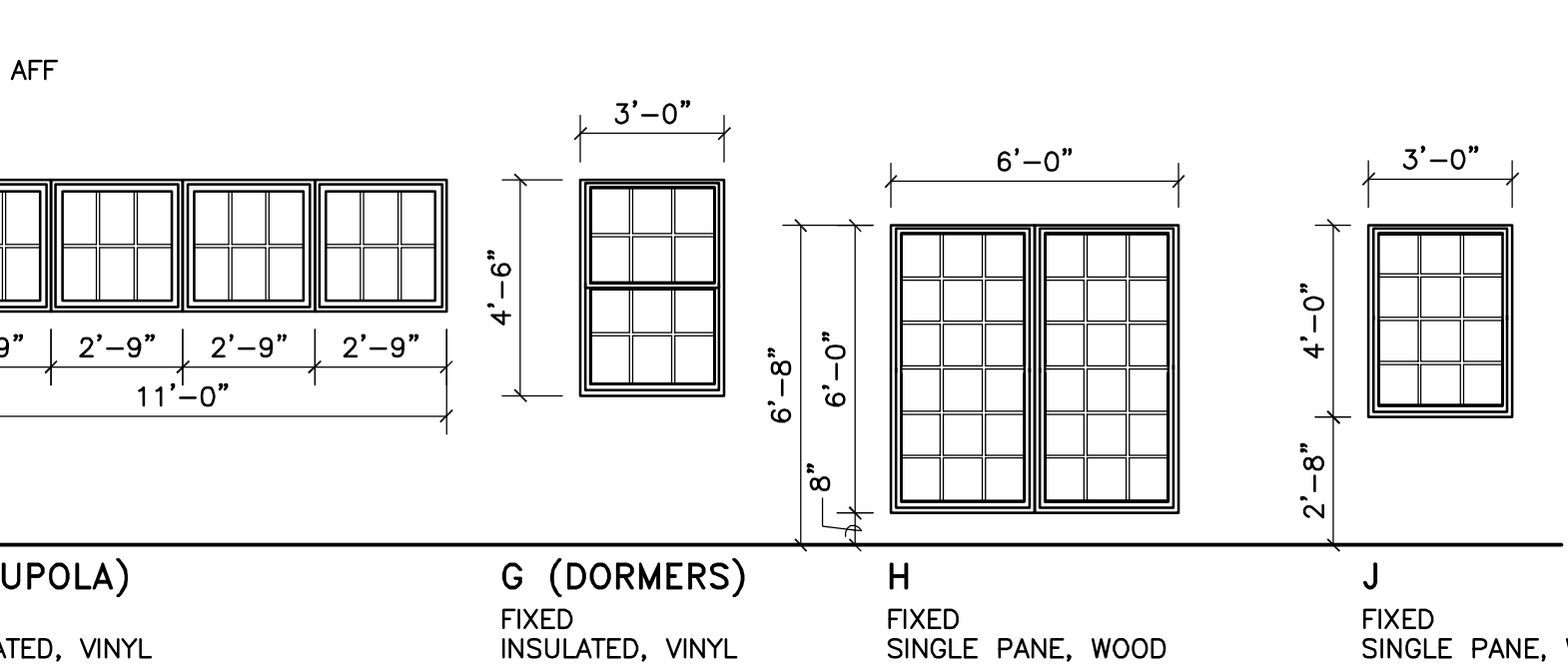
NOTE: WINDOW SIZES TO BE MANUFACTURER STANDARDS CLOSEST TO THE SIZES SHOWN

DOOR SCHEDULE – COMMON AREAS

DOOR #	SIZE	TYPE	MAT'L	FRAME TYPE	GLASS SIZE	REMARKS
101A	3'0"x6'8"x1-3/4" (PR)	FR	FG	—	FULL GLASS	—
101B	3'0"x6'8"x1-3/4" (PAIR)	NL	WD	—	4"x25"	OPPOSING SWING
101C	3'0"x6'8"x1-3/4" (PAIR)	NL	WD	—	4"x25"	OPPOSING SWING, 20 MINUTE DOOR
102A	3'0"x6'8"x1-3/4"	F	WD	—	—	20 MINUTE DOOR
103A	3'0"x6'8"x1-3/4"	F	WD	—	—	20 MINUTE DOOR
103B	3'0"x6'8"x1-3/4"	F	WD	—	—	—
104A	3'0"x6'8"x1-3/4" (PAIR)	F	WD	—	—	—
104B	3'0"x6'8"x1-3/4" (PAIR)	F	WD	—	—	—
104C	3'0"x6'8"x1-3/4" (PAIR)	F	WD	—	—	—
107A	3'0"x6'8"x1-3/4"	NL	WD	—	4"x25"	—
107B	3'0"x6'8"x1-3/4"	F	WD	—	—	—
108A	3'0"x6'8"x1-3/4" (PAIR)	FR	WD	—	FULL GLASS	—
108B	3'0"x6'8"x1-3/4"	F	WD	—	—	20 MINUTE DOOR
108C	3'0"x6'8"x1-3/4" (PAIR)	FR	WD	—	FULL GLASS	—
108D	3'0"x6'8"x1-3/4"	F	WD	—	—	20 MINUTE DOOR
110A	3'0"x6'8"x1-3/4"	NL	WD	—	4"x25"	20 MINUTE DOOR
110B	3'0"x6'8"x1-3/4"	NL	WD	—	4"x25"	20 MINUTE DOOR
111A	3'0"x6'8"x1-3/4"	F	WD	—	—	—
112A	3'0"x6'8"x1-3/4"	NL	WD	—	4"x25"	20 MINUTE DOOR
113A	3'0"x6'8"x1-3/4"	NL	WD	—	4"x25"	20 MINUTE DOOR
113B	3'0"x6'8"x1-3/4"	F	FG	—	—	—
114A	3'0"x6'8"x1-3/4"	NL	WD	—	4"x25"	OPPOSING SWING
115A	3'0"x6'8"x1-3/4"	F	FG	—	—	—
117A	3'0"x6'8"x1-3/4" (PAIR)	F	WD	—	—	—
117B	3'0"x6'8"x1-3/4" (PAIR)	F	WD	—	—	—
117C	3'0"x6'8"x1-3/4" (PAIR)	F	WD	—	—	—
118A	3'0"x6'8"x1-3/4"	NL	WD	—	4"x25"	20 MINUTE DOOR
120A	3'0"x6'8"x1-3/4"	NL	WD	—	4"x25"	20 MINUTE DOOR
121A	3'0"x6'8"x1-3/4" (PAIR)	FR	FG	—	FULL GLASS	—
121B	3'0"x6'8"x1-3/4" (PAIR)	FR	FG	—	FULL GLASS	—
121B	3'0"x6'8"x1-3/4" (PAIR)	NL	WD	—	4"x25"	OPPOSING SWING, 20 MINUTE DOOR
121C	3'0"x6'8"x1-3/4"	FR	FG	—	FULL GLASS	—
122A	3'0"x6'8"x1-3/4" (PAIR)	NL	WD	—	4"x25"	20 MINUTE DOOR
124A	3'0"x6'8"x1-3/4"	F	WD	—	—	20 MINUTE DOOR
125A	3'0"x6'8"x1-3/4"	F	WD	—	—	20 MINUTE DOOR
126A	3'0"x6'8"x1-3/4"	F	WD	—	—	20 MINUTE DOOR
127A	3'0"x6'8"x1-3/4"	NL	WD	—	4"x25"	—
127A	3'0"x6'8"x1-3/4" (PAIR)	F	WD	—	—	—
127B	3'0"x6'8"x1-3/4" (PAIR)	F	WD	—	—	—
127C	3'0"x6'8"x1-3/4" (PAIR)	F	WD	—	—	—
128A	3'0"x6'8"x1-3/4"	NL	WD	—	4"x25"	—
129A	3'0"x6'8"x1-3/4"	NL	WD	—	4"x25"	—
131A	3'0"x6'8"x1-3/4"	F	WD	—	—	20 MINUTE DOOR
132A	3'0"x6'8"x1-3/4"	NL	WD	—	4"x25"	20 MINUTE DOOR
132B	3'0"x6'8"x1-3/4"	F	WD	—	—	—
133A	3'0"x6'8"x1-3/4"	F	WD	—	—	—
134A	3'0"x6'8"x1-3/4"	NL	WD	—	4"x25"	20 MINUTE DOOR
134B	3'0"x6'8"x1-3/4"	NL	WD	—	4"x25"	20 MINUTE DOOR
137A	3'0"x6'8"x1-3/4"	F	WD	—	—	—
138A	3'0"x6'8"x1-3/4"	F	WD	—	—	—
139A	3'0"x6'8"x1-3/4"	F	WD	—	—	—
141A	3'0"x6'8"x1-3/4" (PAIR)	FR	WD	—	FULL GLASS	—
141B	3'0"x6'8"x1-3/4"	F	WD	—	—	20 MINUTE DOOR
141C	3'0"x6'8"x1-3/4" (PAIR)	FR	WD	—	FULL GLASS	—
141D	3'0"x6'8"x1-3/4"	F	WD	—	—	20 MINUTE DOOR
143A	3'0"x6'8"x1-3/4"	NL	WD	—	4"x25"	—
143B	3'0"x6'8"x1-3/4"	NL	FG	—	4"x25"	—
144A	3'0"x6'8"x1-3/4" (PAIR)	F	WD	—	—	—
144B	3'0"x6'8"x1-3/4" (PAIR)	F	WD	—	—	—
144C	3'0"x6'8"x1-3/4" (PAIR)	F	WD	—	—	—
145A	3'0"x6'8"x1-3/4"	F	WD	—	—	20 MINUTE DOOR
145B	2'0"x6'8"x1-3/4"	F	WD	—	—	—
146A	3'0"x6'8"x1-3/4"	F	WD	—	—	—

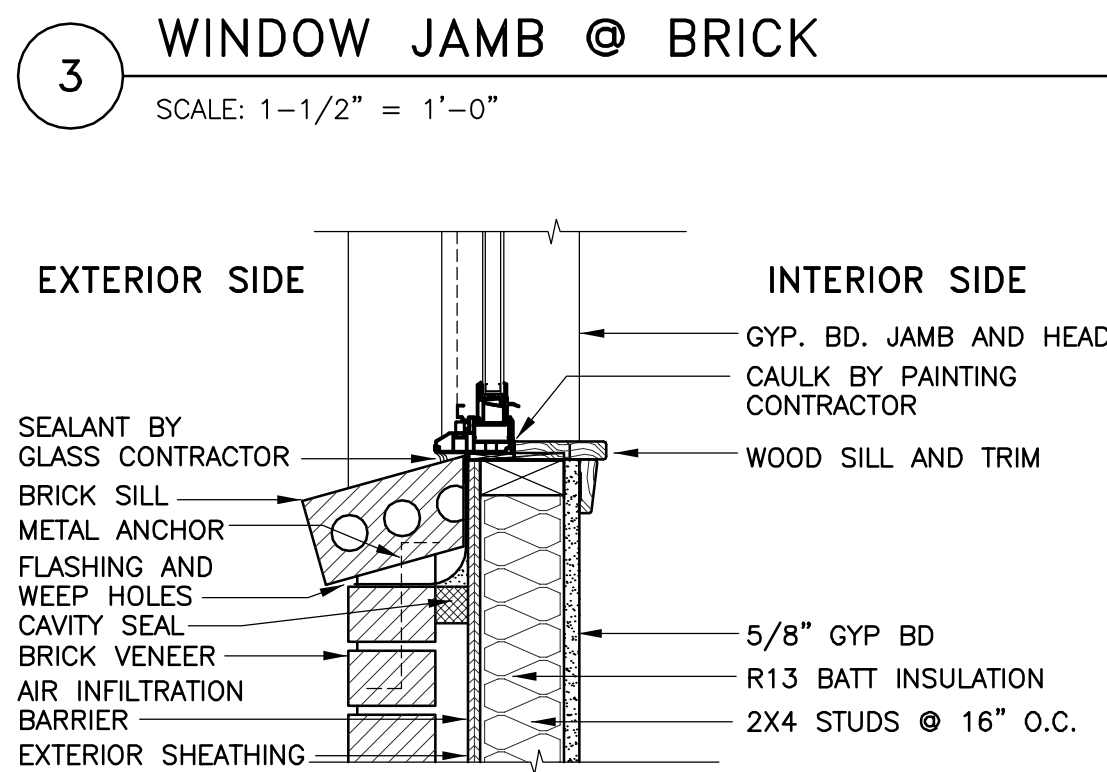
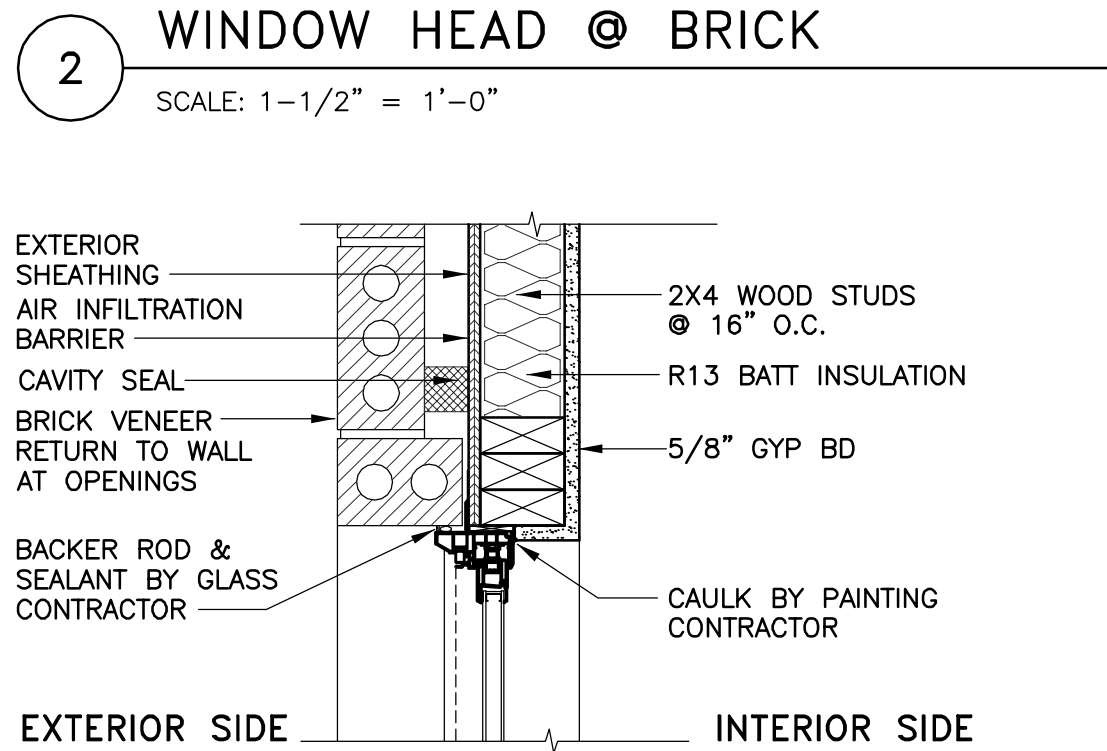
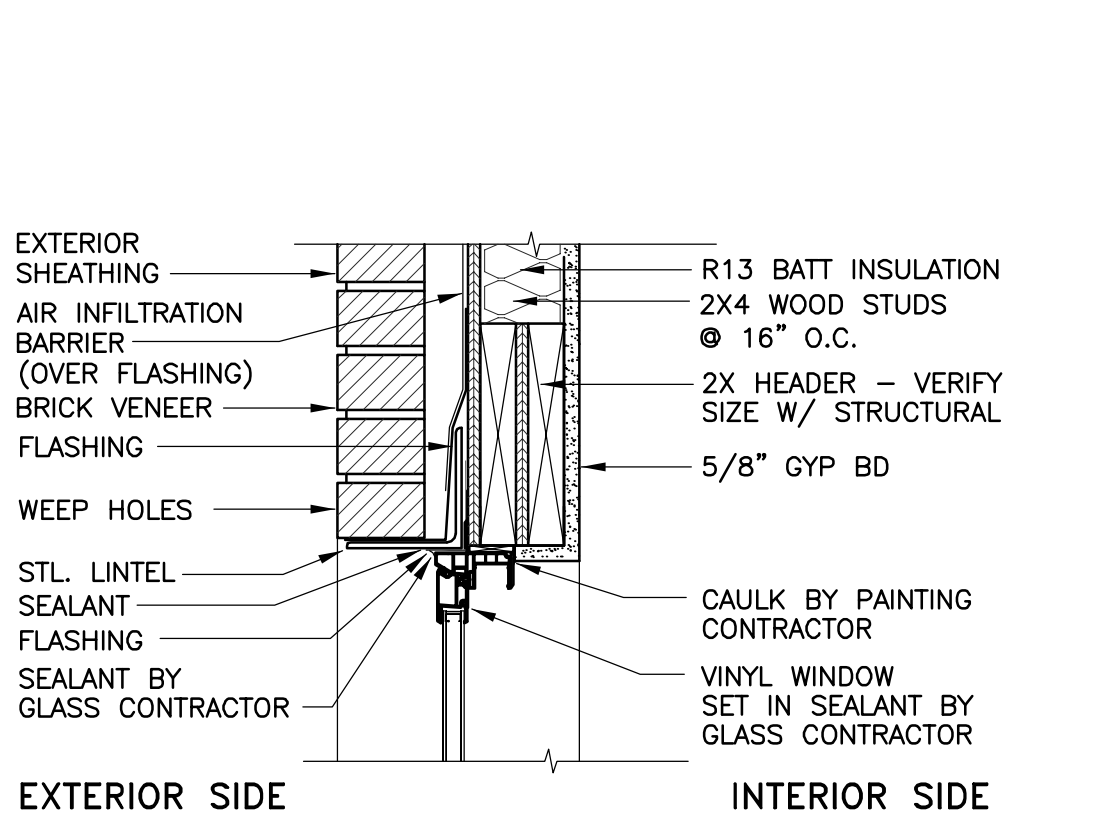
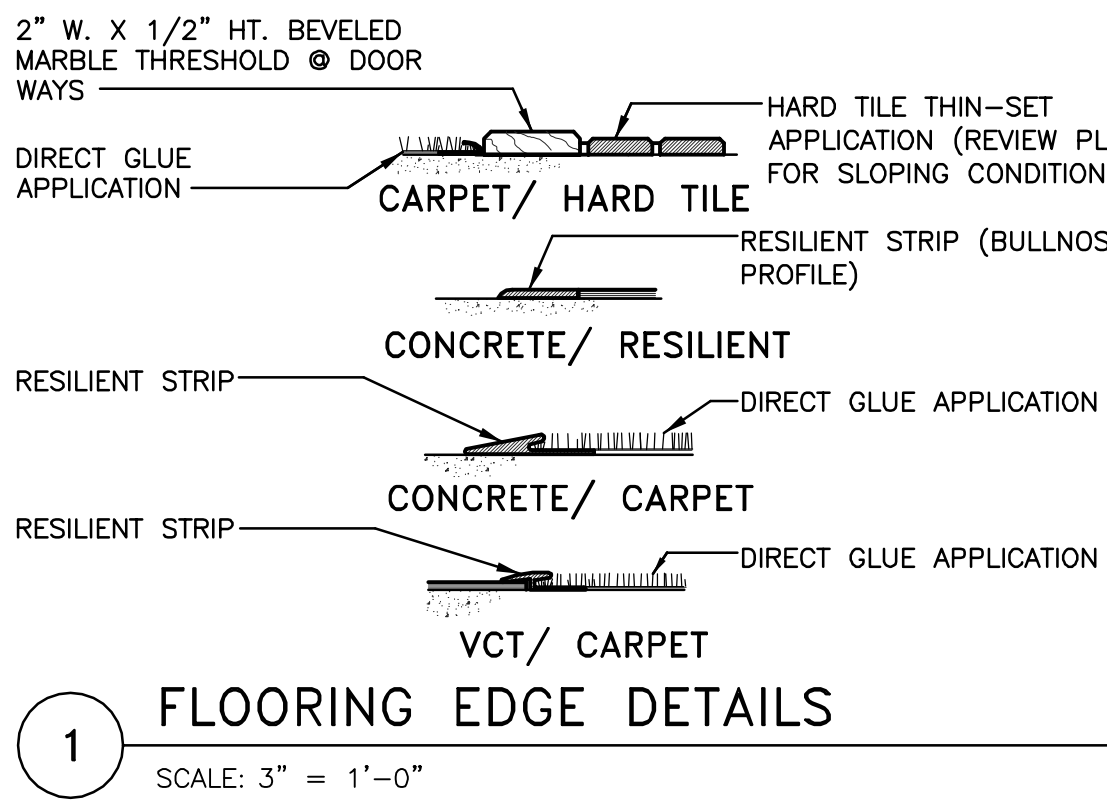
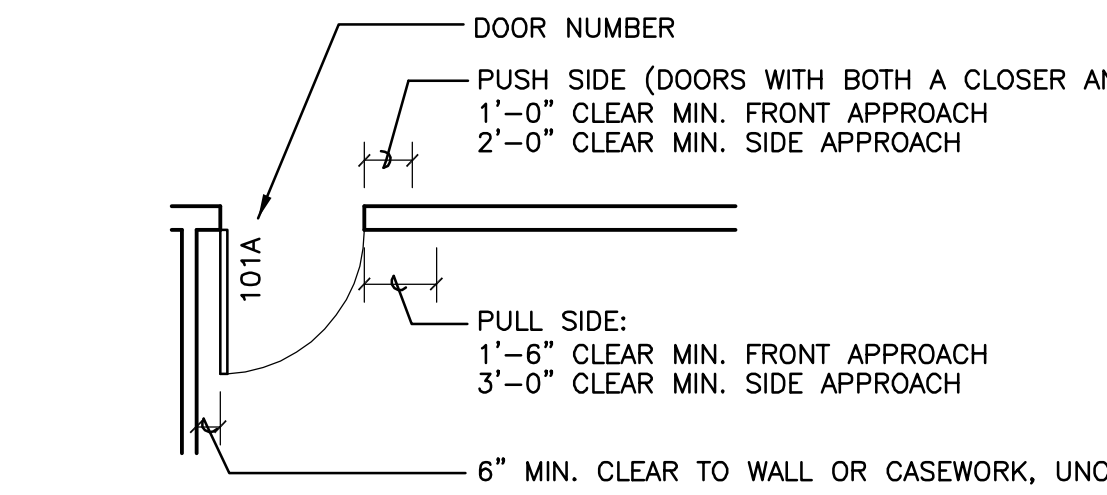
FRAME TYPES

SCALE: 1/4" = 1'-0"



INTERIOR WINDOW TYPES

DOOR LEGEND

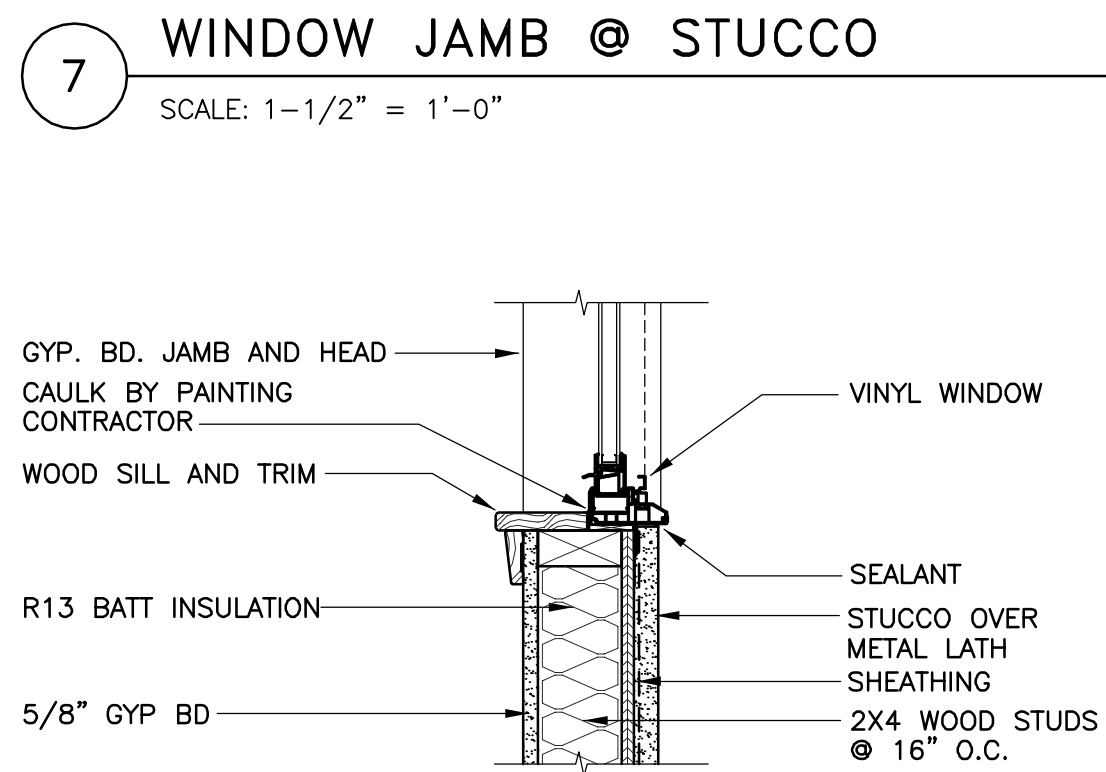
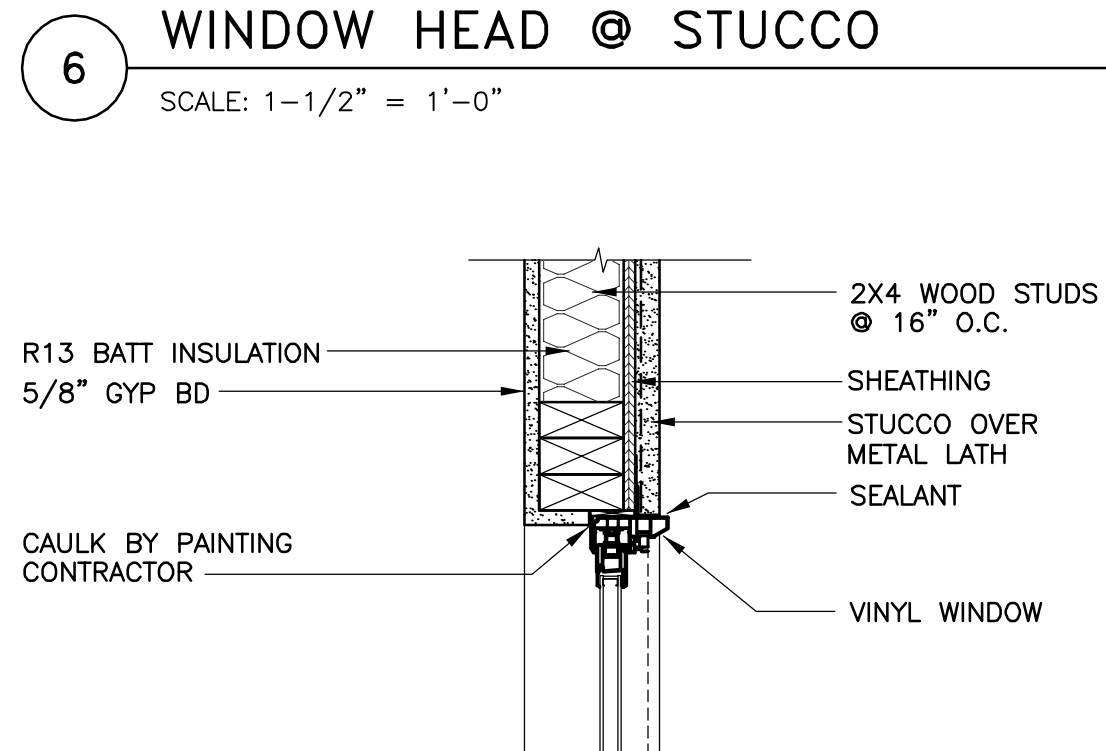
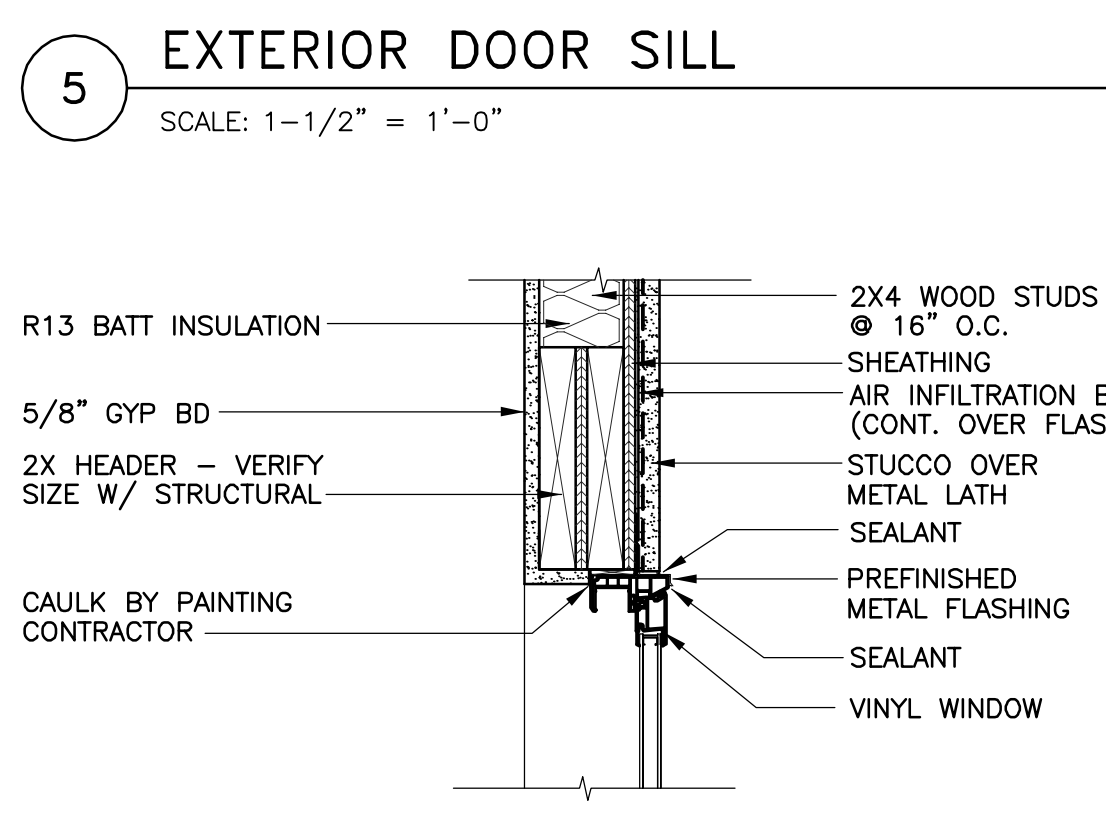
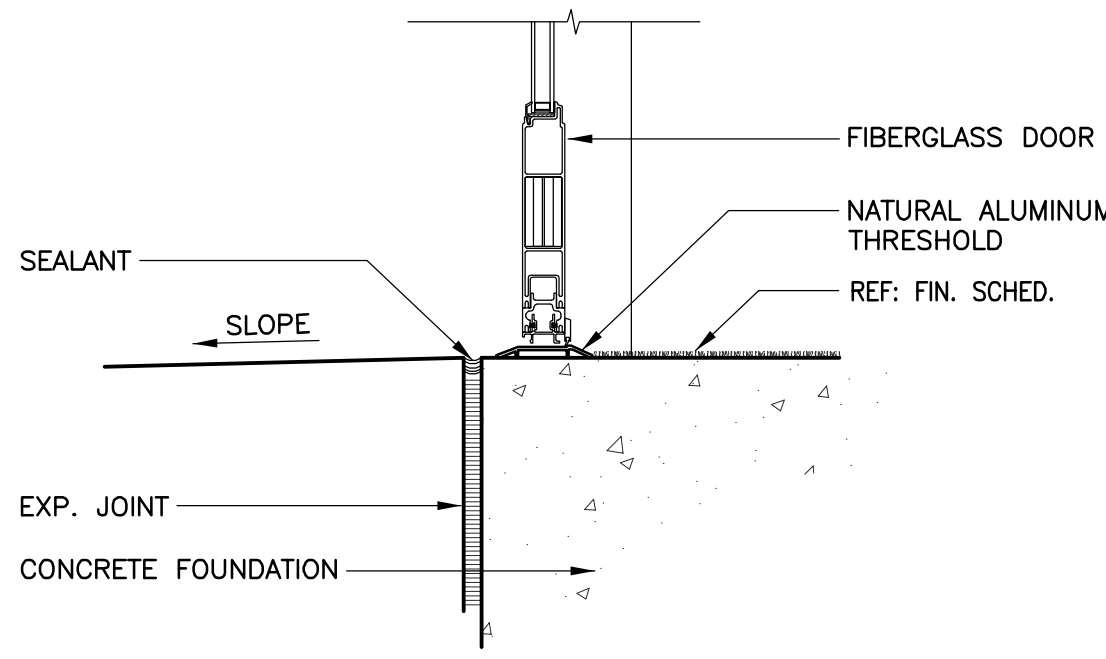


WINDOW SILL @ BRICK
SCALE: 1-1/2" = 1'-0"

DOOR SCHEDULE NOTES

- ALL EXTERIOR METAL DOORS SHALL BE INSULATED.
- ALL NARROW LITE FRAMES TO BE PAINTED OR STAINED TO MATCH DOOR FRAME COLOR – BOTH SIDES.

JAMB SIMILAR TO X/A3.1, X/A3.1 WINDOW JAMB DETAILS
HEAD SIMILAR TO X/A3.1, X/A3.1 WINDOW HEAD DETAILS



WINDOW SILL @ STUCCO
SCALE: 1-1/2" = 1'-0"