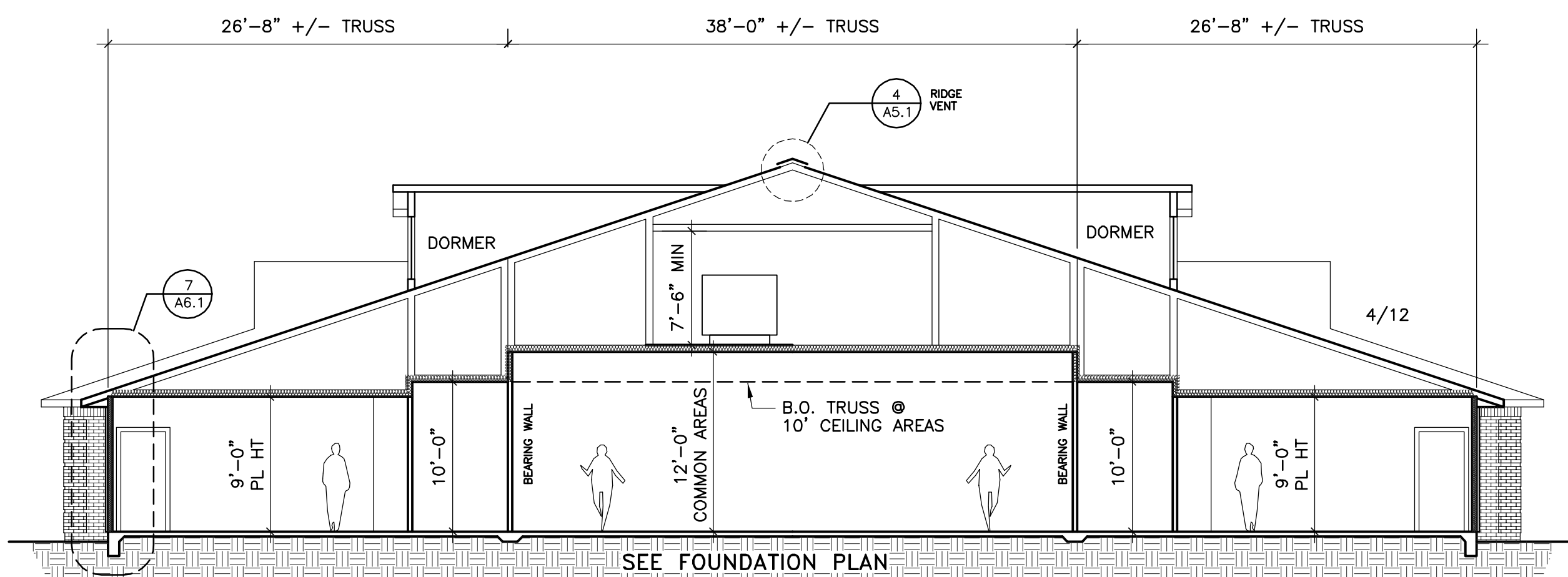
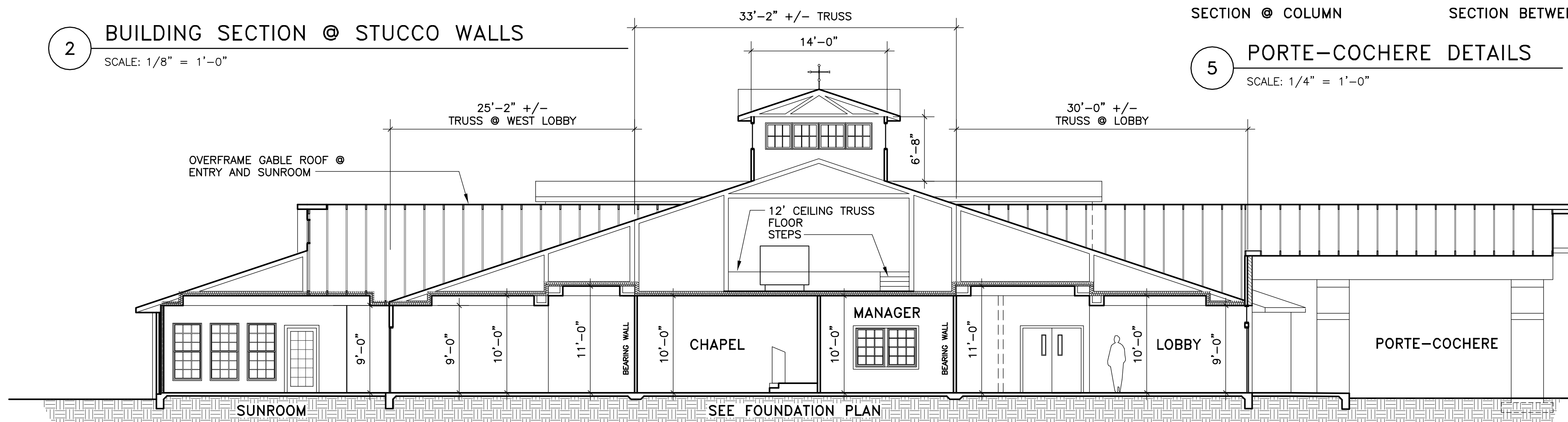


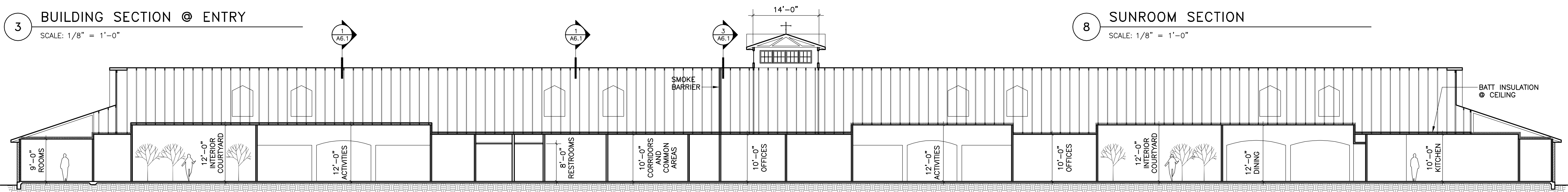
1 BUILDING SECTION @ BRICK VENEER WALLS
SCALE: 1/8" = 1'-0"



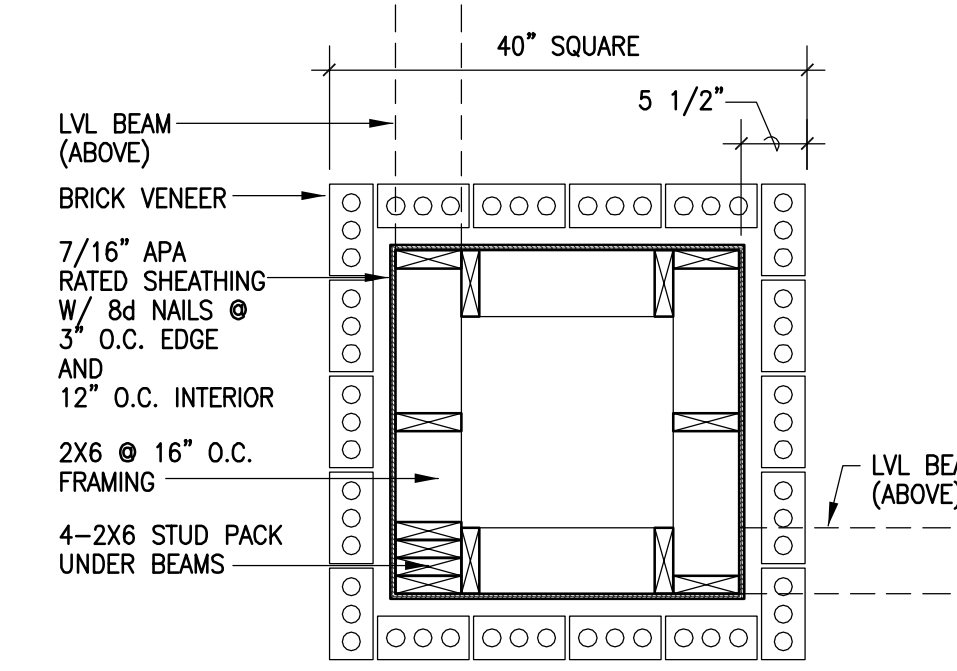
2 BUILDING SECTION @ STUCCO WALLS
SCALE: 1/8" = 1'-0"



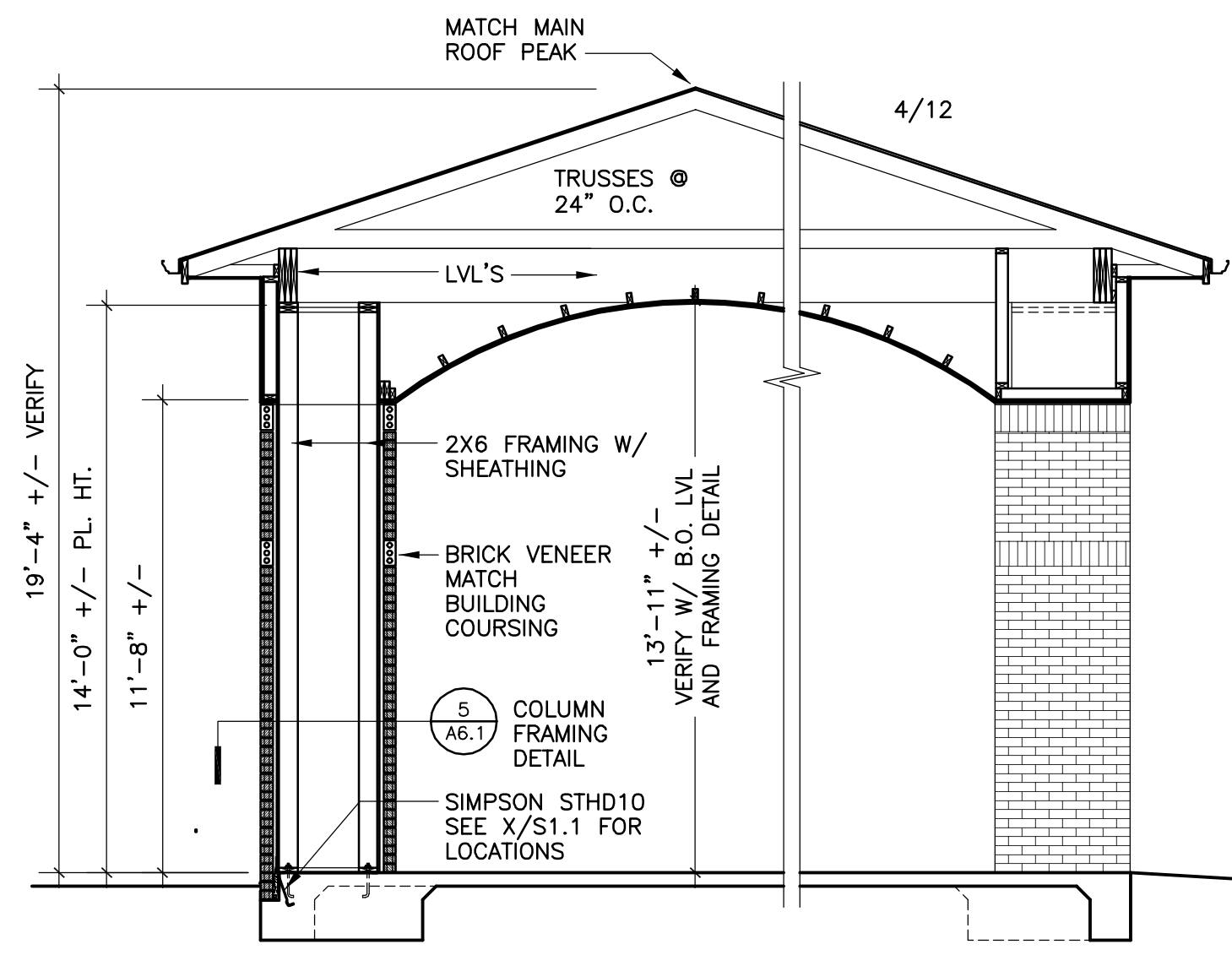
3 BUILDING SECTION @ ENTRY
SCALE: 1/8" = 1'-0"



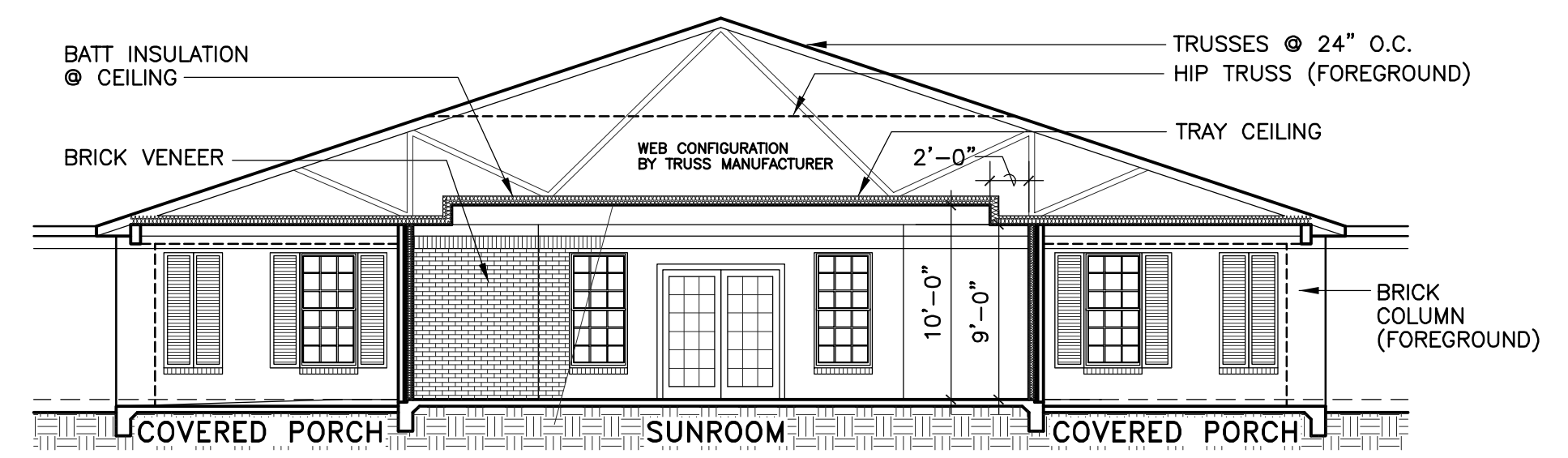
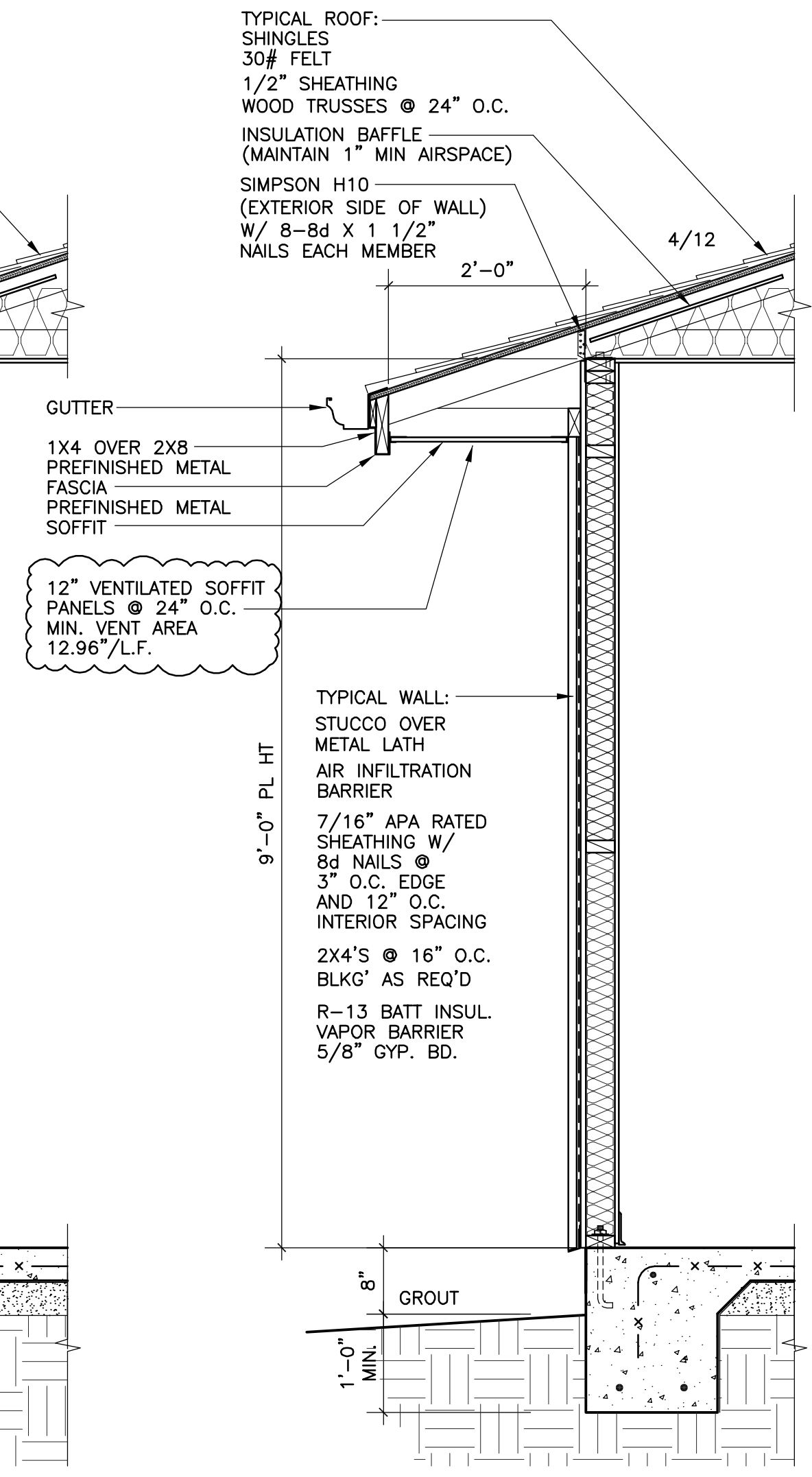
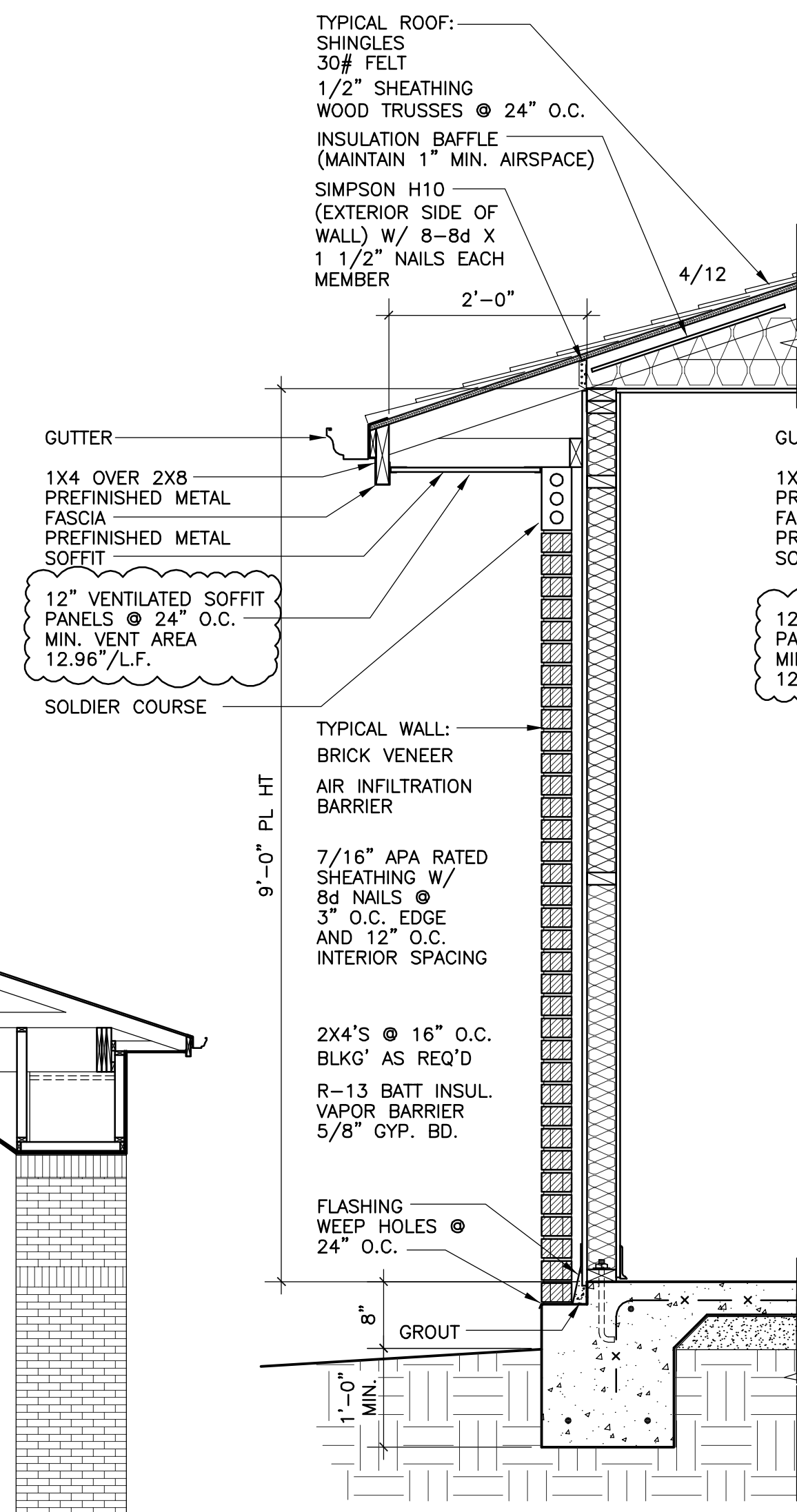
4 LONGITUDINAL BUILDING SECTION
SCALE: 3/32" = 1'-0"



COLUMN FRAMING
SCALE: 3/4" = 1'-0"



5 PORTE-COCHERE DETAILS
SCALE: 1/4" = 1'-0"



8 SUNROOM SECTION
SCALE: 1/8" = 1'-0"

Randal L. Groninger
Architect

P.O. Box 533
Bagdad, Florida 32530
850.626.6955

Louisiana #3502

ANDERSON MEMORY CARE
AT SUMMERFIELD
4104 DAUPHINE STREET
SLIDELL, LOUISIANA

DATE: 25 JUNE 2010
PROJECT: 10-181

PRELIMINARY
NOT FOR CONSTRUCTION

A6.1