

KELLY McHUGH & ASSOCIATES, INC.		CIVIL ENGINEERS & LAND SURVEYORS		845 GALVEZ ST., MANDEVILLE, LA.		PHONE 985-682-6611 FAX 985-682-6035	
SCALE: 1" = 30'		DATE: 02-25-10		JOB NO.: 08-193		DRAWN: DRJ	

THE WOODLANDS

APARTMENTS IN ST. BERNARD PARISH, LOUISIANA for PROVIDENT REALTY ADVISORS

BEELER
GUEST
OWENS
ARCHITECTS, INC.
4245 N. CENTRAL EXPRESSWAY
SUITE 300 DALLAS, TEXAS 75205 (214) 520-8878

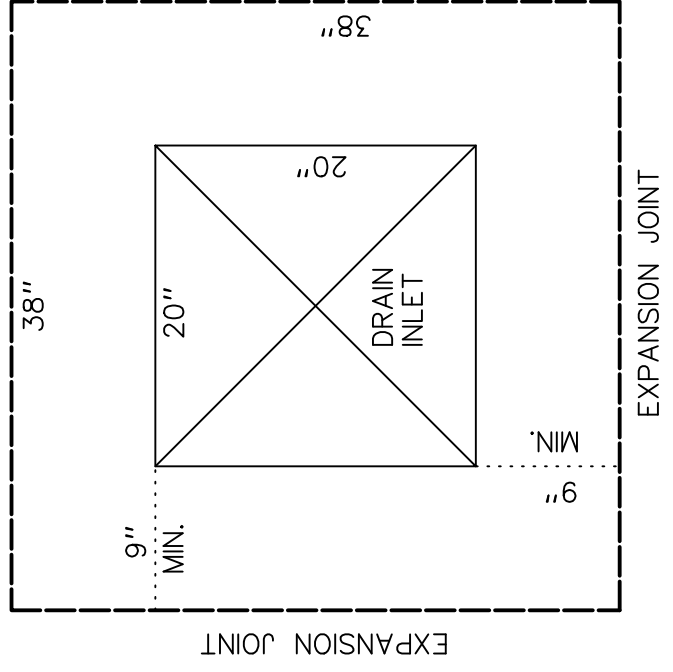
DATE 01-30-09

PROJECT
08174

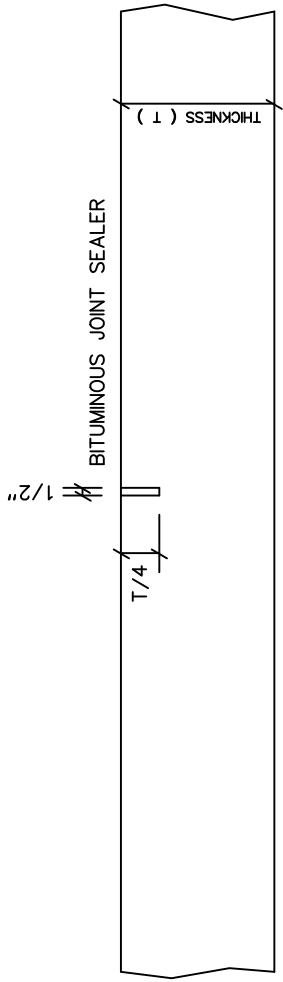
SHEET NUMBER

C.4

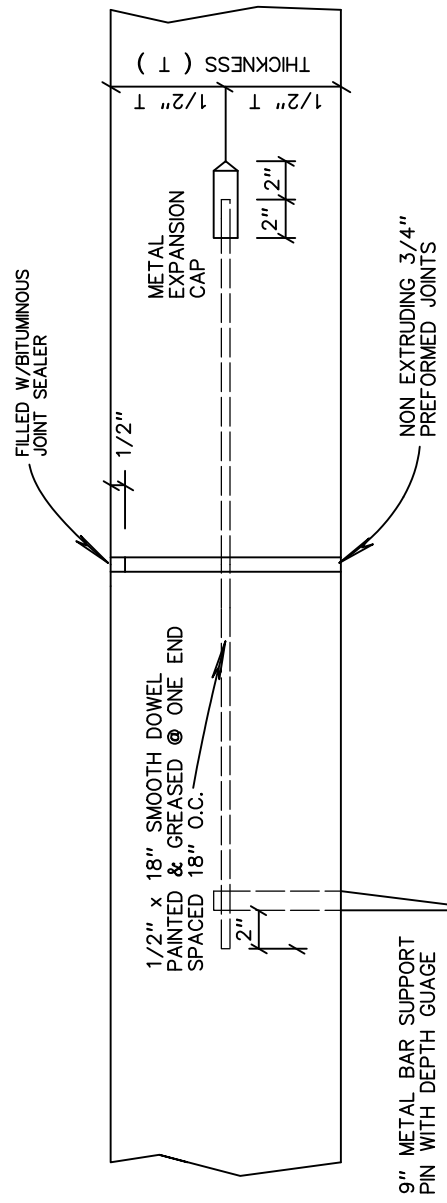
COPYRIGHT © Beeler Guest Owens Architects, Inc. ALL RIGHTS RESERVED



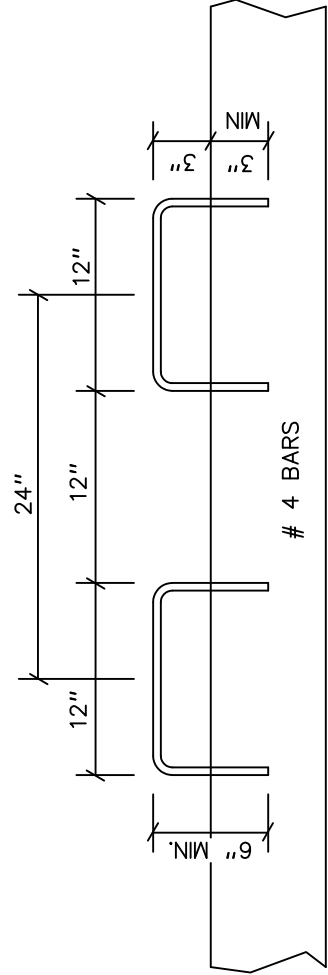
JOINT DETAIL AT DRAIN INLETS



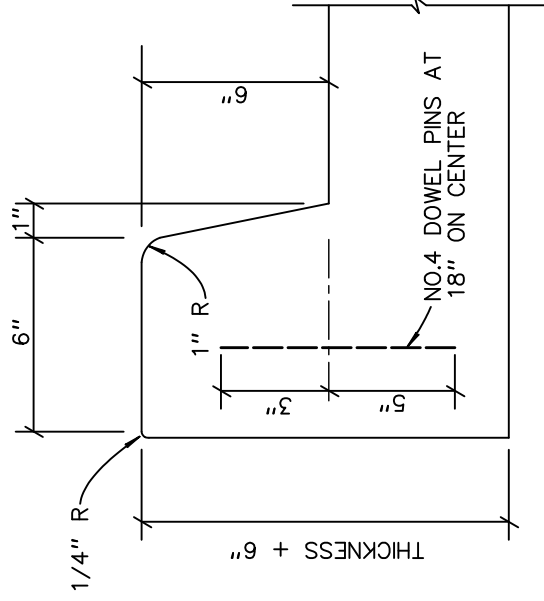
TRANSVERSE CONTROL JOINT



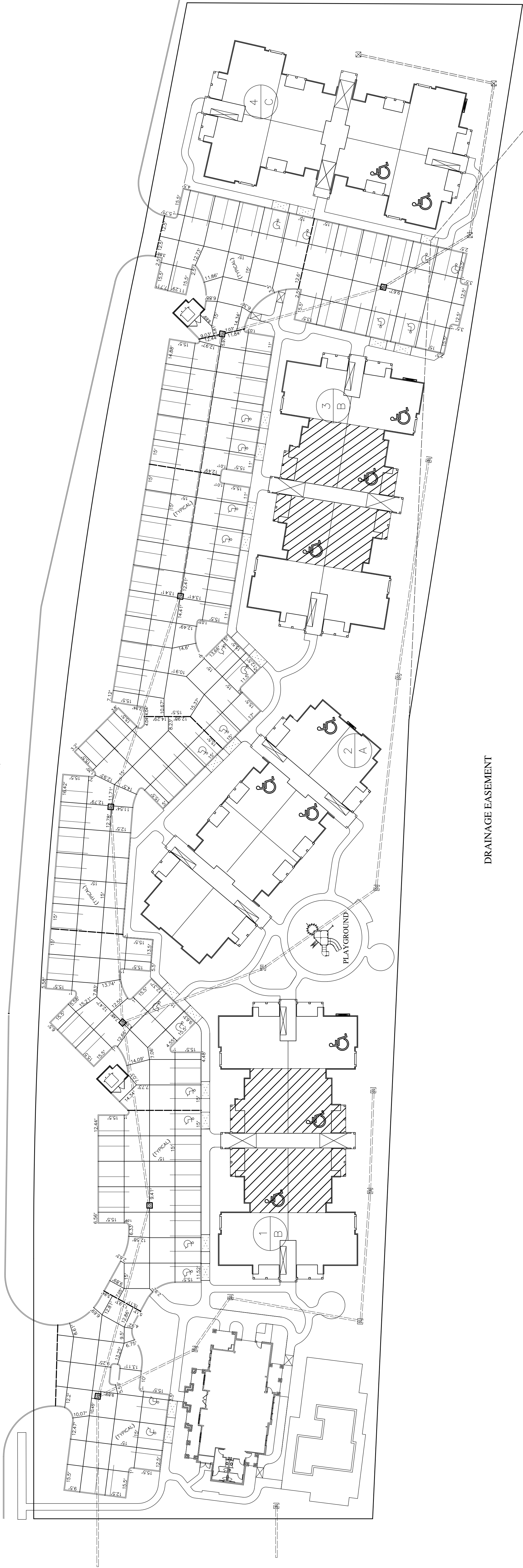
TRANSVERSE EXPANSION JOINT



CURB DOWEL DETAIL



MONOLITHIC BARRIER CURB DETAIL



DRAINAGE EASEMENT

LEGEND

- = TRANSVERSE EXPANSION JOINT
- = TRANSVERSE CONTROL JOINT

NOTES:

1. ALL DIMENSIONS SHOWN ARE MEASURED ON THE OUTSIDE OF THE 6" CONCRETE CURB

PAVING JOINT LAYOUT PLAN