

KELLY McHUGH & ASSOCIATES, INC. CIVIL ENGINEERS & LAND SURVEYORS 845 GALVEZ ST., MANDEVILLE, LA. PHONE 985-628-5611 FAX 985-628-5033	SCALE: 1" = 30'	DATE: 01-30-09	JOB NO.: 08-193	DRAWING: DRJ

THE WOODLANDS
 0000 0000 0000 0000 0000 0000 0000 0000
 APARTMENTS IN ST. BERNARD PARISH, LOUISIANA for
 PROVIDENT REALTY ADVISORS

BEELER
GUEST
OWENS
ARCHITECTS, INC.
DALLAS, TEXAS 75205 (214) 520-8878

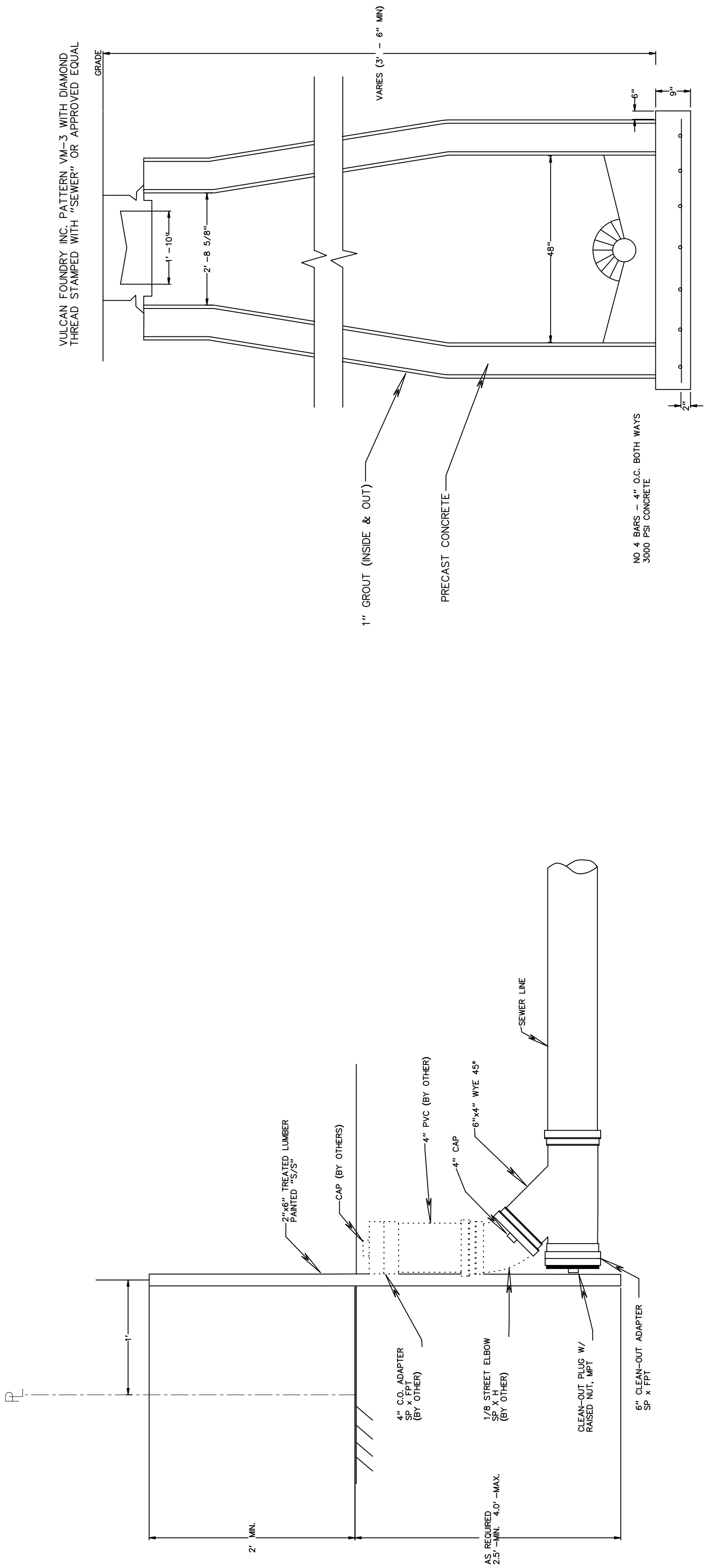
DATE 01-30-09

PROJECT
08174

SHEET NUMBER

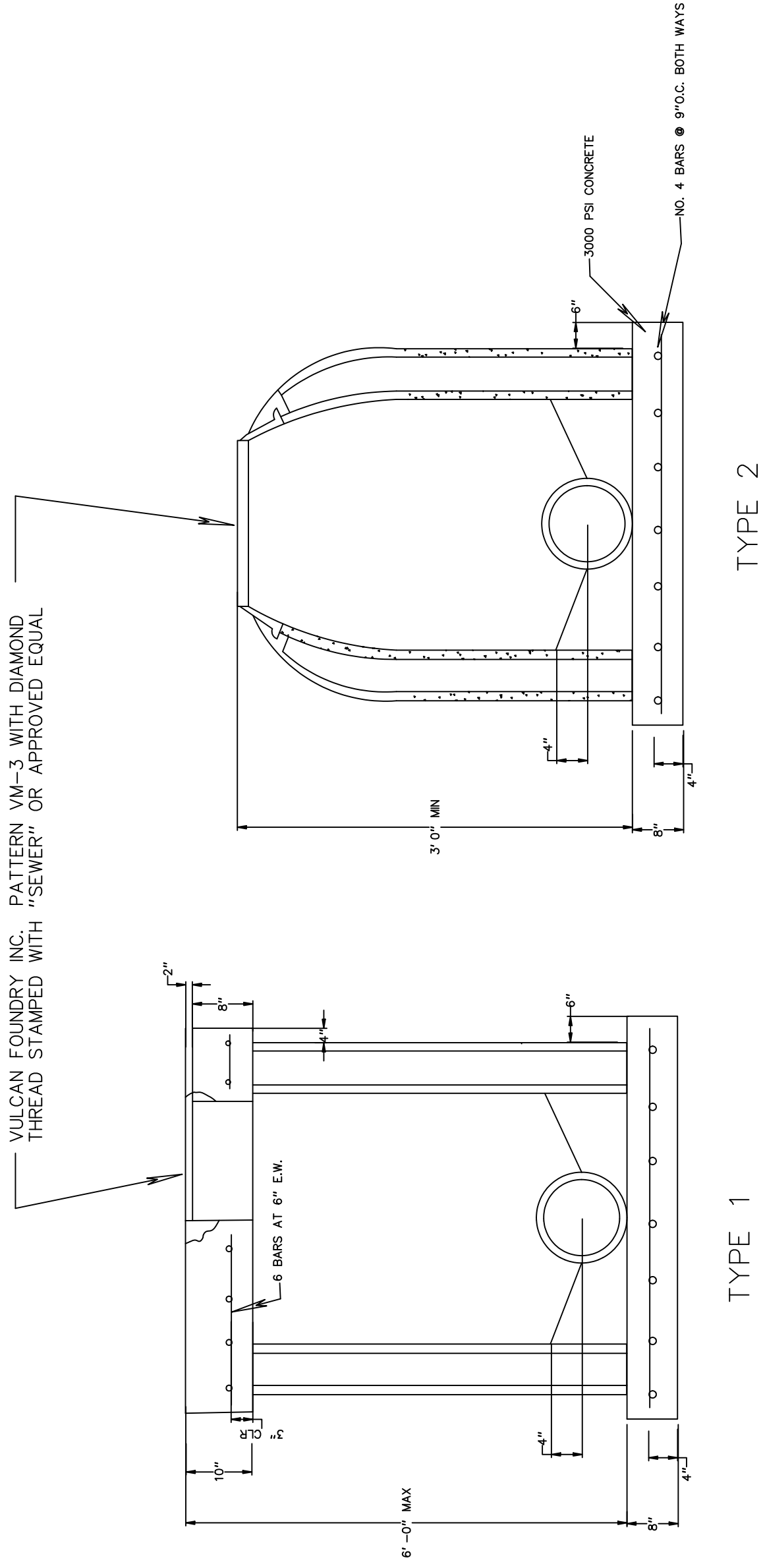
COPYRIGHT © Beeler Guest Owens Architects, Inc. ALL RIGHTS RESERVED

STANDARD SEWER DETAILS



TYPICAL SEWER CLEAN-OUT DETAIL

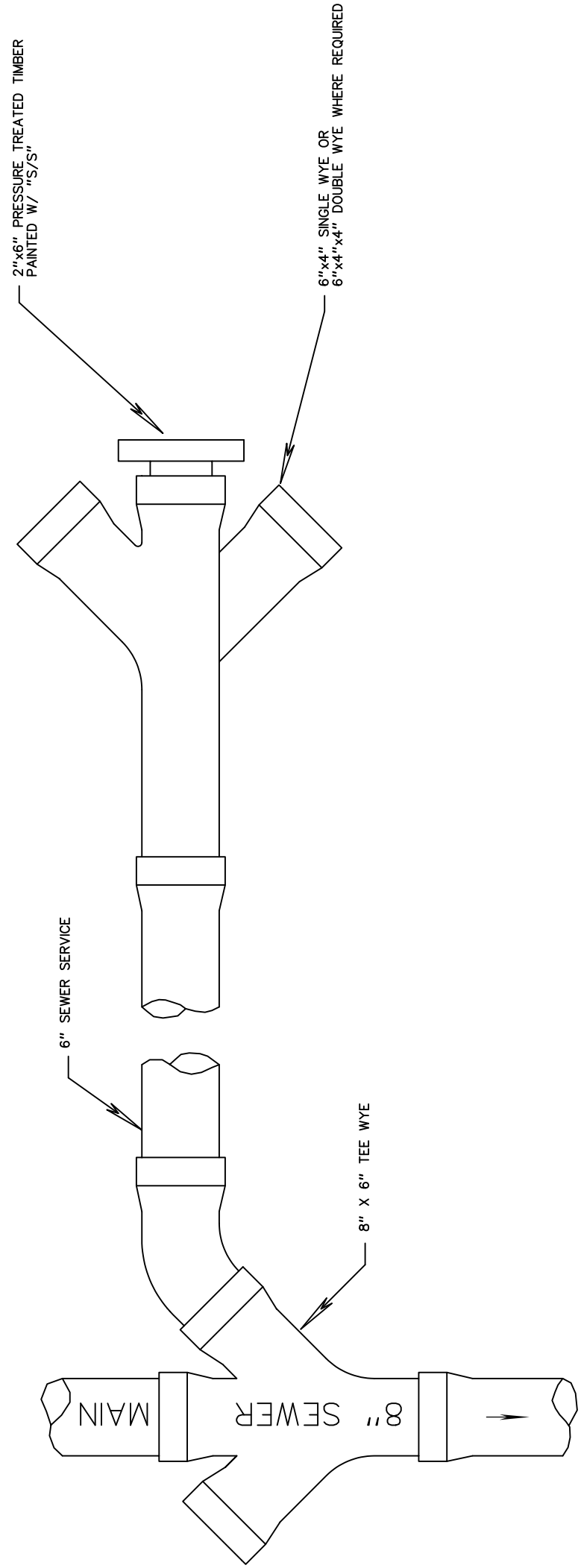
STANDARD MANHOLE DETAIL



SHALLOW MANHOLE

NOTES:

1. MANHOLES SHALL BE PRECAST REINF. CONC. MANHOLE RISER AND TOPS CONFORMING TO ASTM C-478 W/JOINTS OF RAM-NECK PERFORMED PLASTIC ROPE AS MANUFACTURED BY K.T. SNYDER, HOUSTON, T.X.; OR ASTM C-443 RUBBER GASKET.
2. CONTRACTOR MAY FURNISH EITHER TYPE 1 OR 2 SHALLOW MANHOLE AND FRAME (DETAILED).



SEWER SERVICE CONNECTION

STANDARD SEWER DETAILS