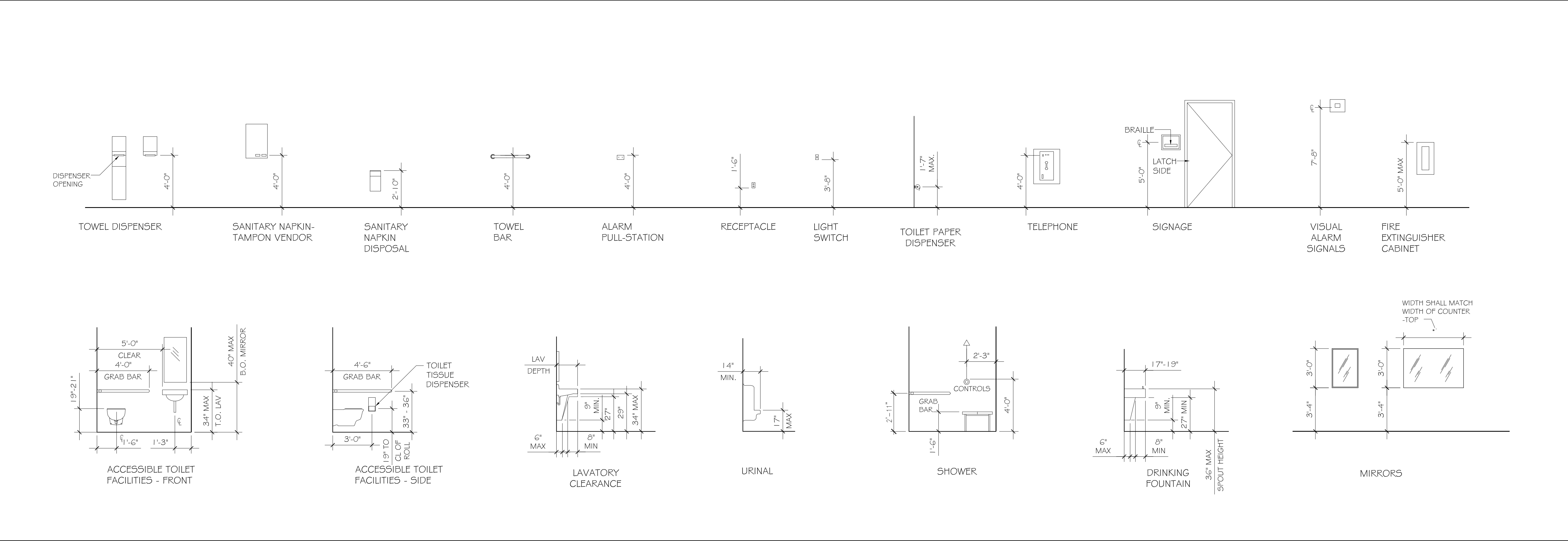
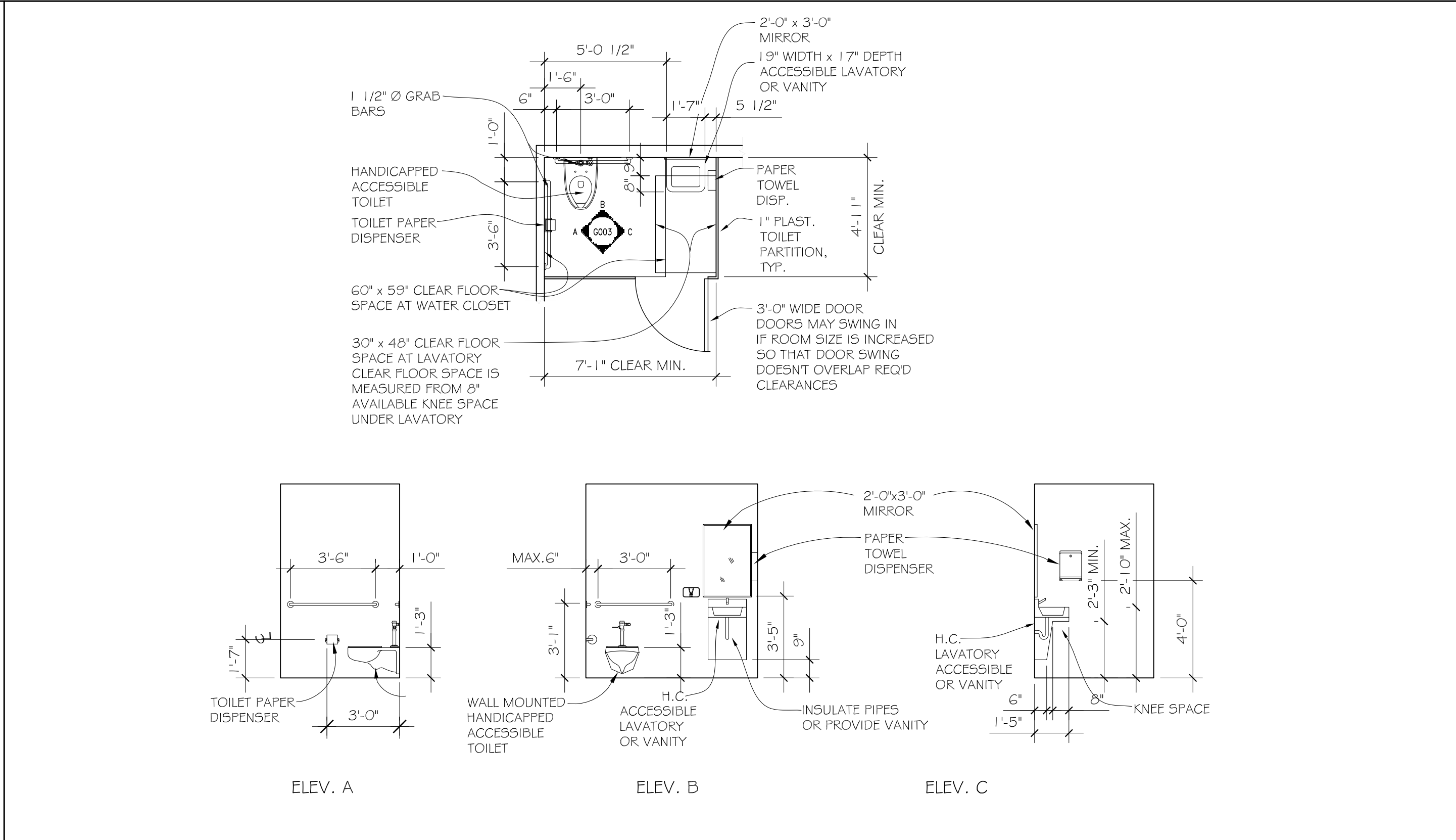


ADA DOORS



ADA MOUNTING HEIGHTS

DAMMON
ENGINEERING, INC.
Architects & Engineers

NEW OFFICES FOR:
EAST ST. TAMMANY CHAMBER
1808 FRONT STREET
SLIDELL, LA

JOB No: 2184
DATE: 10-14-2013
DRAWN BY: KJK
CHECKED BY: KJK

ADA
INFORMATION

SHEET No: 4 of 17

G3

The above drawings and specifications, drawings and specifications are the property of Dammon Engineering, Inc. and shall remain the property of Dammon Engineering, Inc. and shall not be reproduced, copied, or used in connection with any other project without the written consent of Dammon Engineering, Inc. All drawings are subject to change without notice.

DAMMON ENGINEERING, INC.
554 OLD SPANISH TRAIL
SLIDELL, LA 70458
PHONE: 985-649-5532
FAX: 985-641-5950