



DAMMON
ENGINEERING, INC.

CHIEF ENGINEER
EMMETT
DAMMON, P.E.
CHIEF ARCHITECT
ROBERT
WILTSE

1095 FLORIDA AVENUE
SLIDELL, LA. 70458
OFFICE: 985-649-5832
FAX: 985-641-5950

WEBSITE:
WWW.DAMMONENGINEERING.COM
EMAIL:
DAMMONENG@BELLSOUTH.NET

ARCHITECTURE
ENGINEERING
STUDIES
PLANNING
INVESTIGATION
EXPERT WITNESS

NEW
APARTMENT
COMPLEX

CROSSWINDS
APARTMENTS
HAMMOND, LA

UNITS 1A,
1A-HC, 1B & 2A
MECHANICAL PLAN

REV:

SCALE: AS NOTED

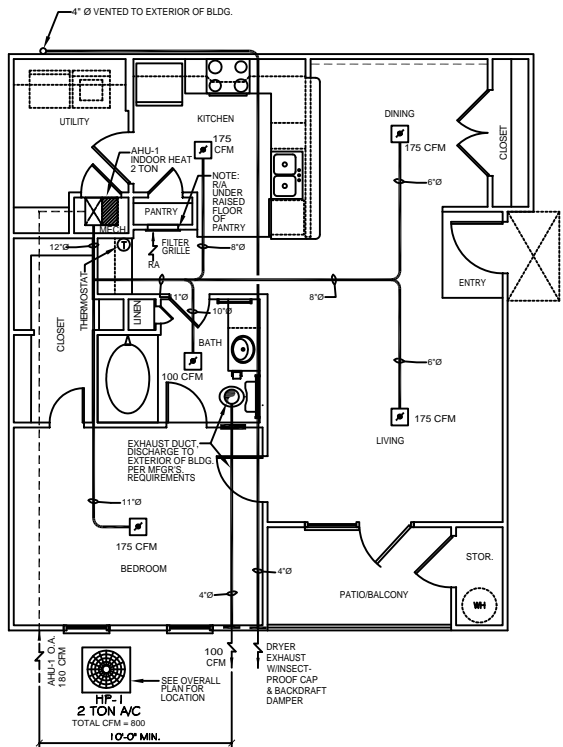
JOB#: 08112.13

DATE: 12-16-09

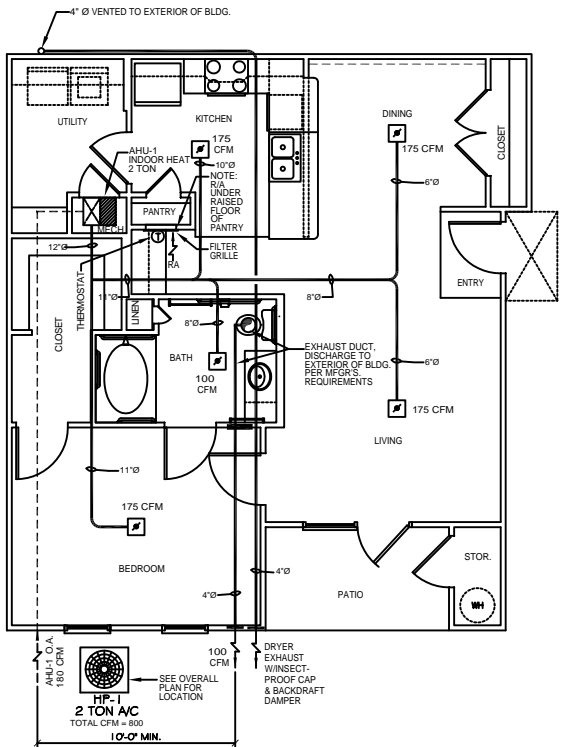
SHEET

M-3

OF

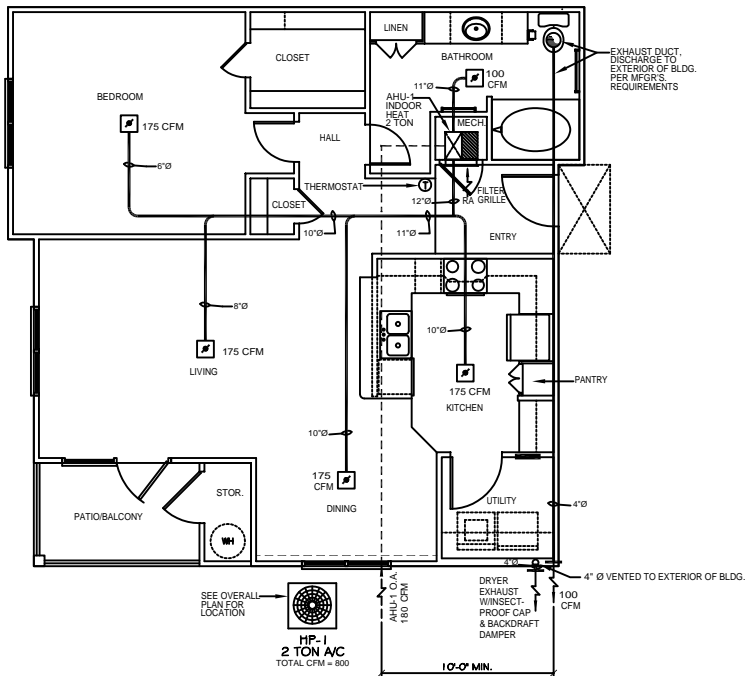


ONE BEDROOM
UNIT 1A MECHANICAL PLAN
SCALE: 1/4" = 1'-0" 921 SQ. FT.

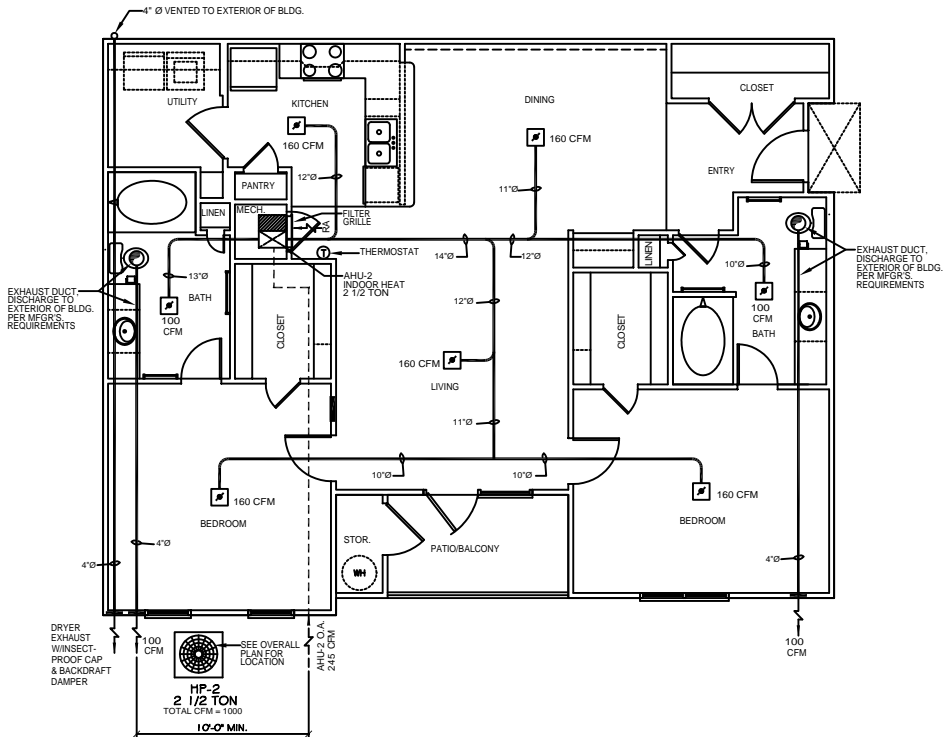


ONE BEDROOM (HANDICAP)
UNIT 1A-HC MECHANICAL PLAN
SCALE: 1/4" = 1'-0" 921 SQ. FT.

- LEGEND**
- SUPPLY AIR VENT WITH FIRE DAMPER, CEILING MOUNTED
 - RETURN AIR GRILLE, WALL MOUNTED BELOW HVAC CLOSET DOOR, TYP. SEE PLAN FOR EXACT LOCATION
 - BATHROOM EXHAUST
 - THERMOSTAT



ONE BEDROOM
UNIT 1B MECHANICAL PLAN
SCALE: 1/4" = 1'-0" 968 SQ. FT.



TWO BEDROOM
UNIT 2A MECHANICAL PLAN
SCALE: 1/4" = 1'-0" 1,324 SQ. FT.