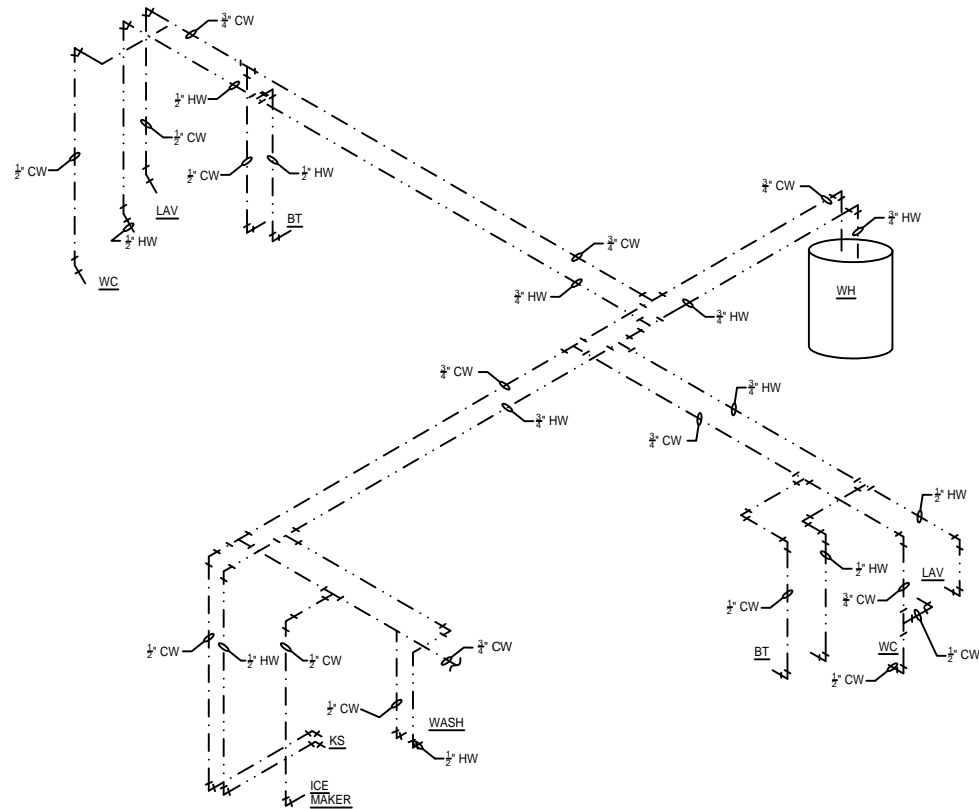
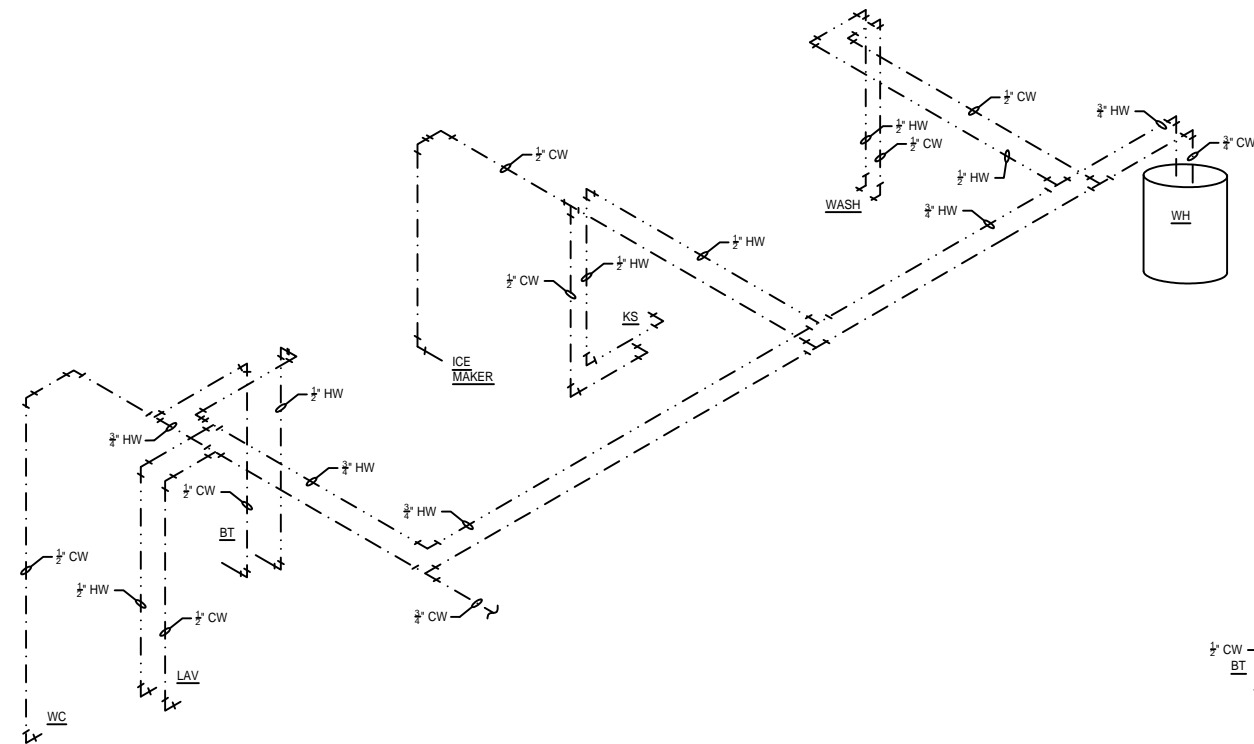


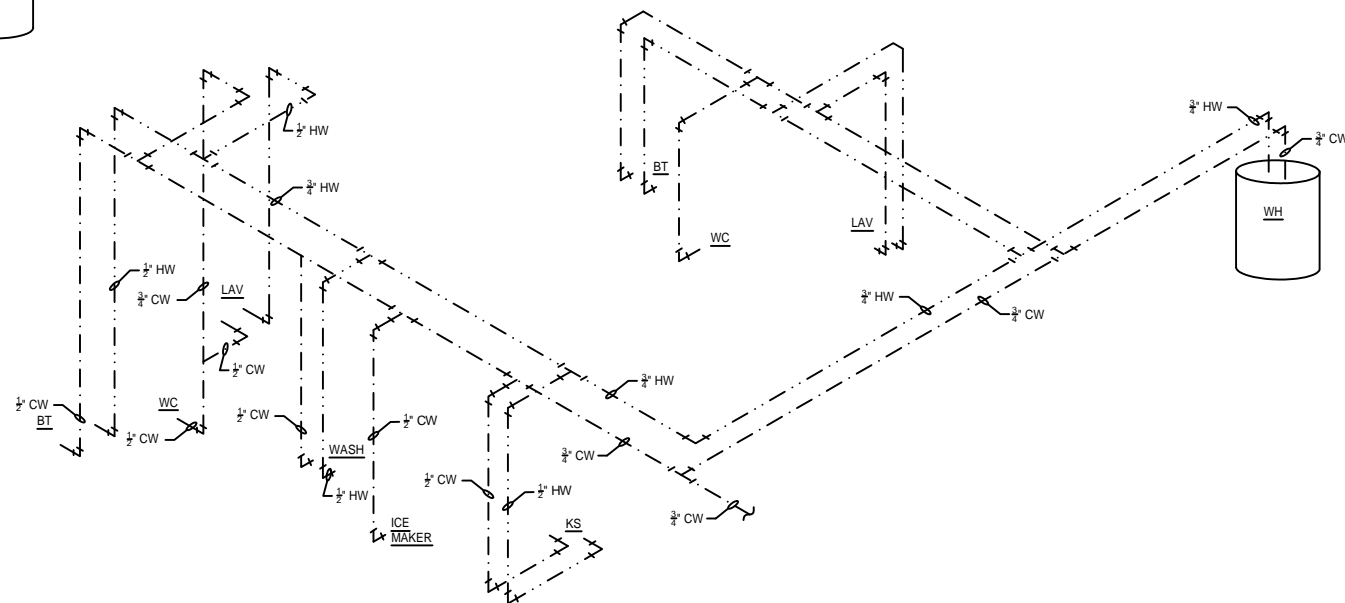
UNIT 1A WATER RISER



UNIT 2A WATER RISER



UNIT 1B WATER RISER



UNIT 3A WATER RISER



**DAMMON**  
ENGINEERING, INC.

CHIEF ENGINEER  
EMMETT  
DAMMON, P.E.

CHIEF ARCHITECT  
ROBERT  
WILTSE

1095 FLORIDA AVENUE  
SLIDELL, LA. 70458  
OFFICE: 985-649-5832  
FAX: 985-641-5950

WEBSITE:  
WWW.DAMMONENGINEERING.COM  
EMAIL:  
DAMMONENG@BELLSOUTH.NET

ARCHITECTURE  
ENGINEERING  
STUDIES  
PLANNING  
INVESTIGATION  
EXPERT WITNESS

NEW  
APARTMENT  
COMPLEX

CROSSWINDS  
APARTMENTS  
HAMMOND, LA

UNITS 1A,  
1B, 2A & 3A  
PLUMBING RISERS

REV:

SCALE: AS NOTED

JOB#: 08112.13

DATE: 12-16-09

SHEET

**P-3**

OF