

# CROSSWINDS

HAMMOND, LA

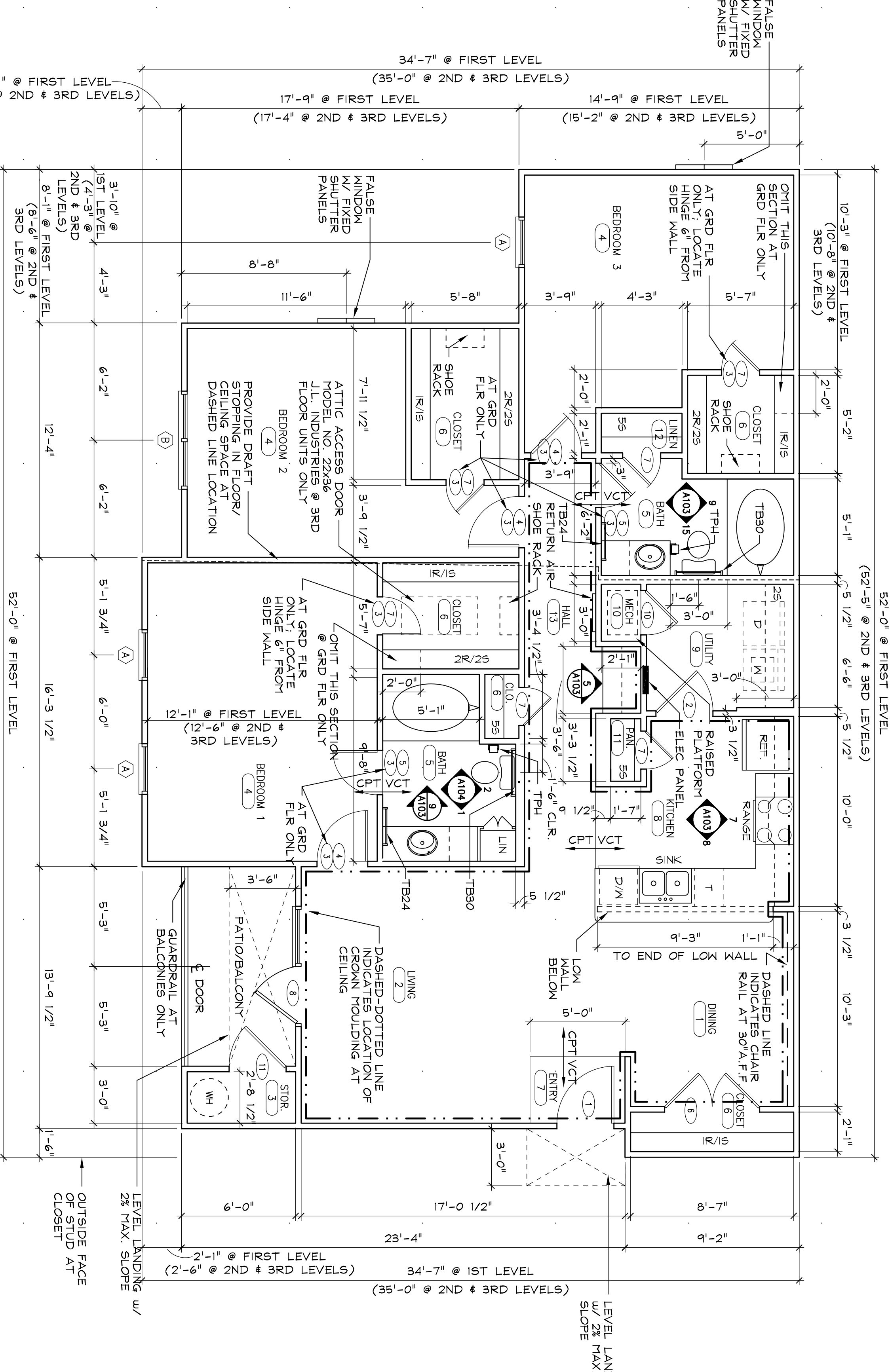
- GENERAL UNIT NOTES:
1. DIMENSIONS ON PLANS ARE TO FACE UNLESS NOTED OTHERWISE. STUDS NOT DIMENSIONED ARE 2" X 4" TYPICAL (16" O.C.) DEEP UNLESS NOTED OTHERWISE.
  2. CONTRACTOR TO VERIFY CLEARANCES WITH THOSE INDICATED AND NOTIFY OWNER OR ARCHITECT OF ANY DISCREPANCIES.
  3. CONTRACTOR TO VERIFY ROUGH BATH TUB SETTING FOR ACTUAL BATH TUB VENDOR.
  4. MAINTAIN 1" MIN. CLEARANCE BEHIND ELECTRICAL PANELS AT TENANT SEPARATION & BREZEWAY WALLS, WHERE APPLICABLE.
  5. TOWER BAR MOUNTING HEIGHTS, 54" MIN. TO TOP OF CABINETS, 48" A.F.F. DEEP & BATH/VANITY CABINETS ARE 21" DEEP TYP.
  6. KITCHEN BASE CABINETS ARE 24" DEEP & BATH/VANITY CABINETS ARE 21" DEEP TYP.
  7. 18/15 IS ONE ROD & ONE SHELF, 28/25 IS TWO RODS & TWO SHELVES, 15/15 IS ONE SHELF & 15 IS FIVE SHELVES.
  8. MOISTURE RESISTANT GYP. BOARD SHALL BE USED AT ALL TUB/SHOWER WALLS. ALL WALLS SHALL BE MOISTURE RESISTANT GYP. BOARD WHERE REQUIRED.
  9. PROVIDE ONE PORTABLE FIRE EXTINGUISHER IN ACCORDANCE W/ IFC SECTION 906 (NFPA 10) IN EACH UNIT.
  10. WASHERS AND DRYERS SHALL BE PROVIDED BY OTHERS.
  11. PROVIDE HORIZONTAL LOWER BLINDS FOR ALL WINDOWS AND FIXED PATIO DOOR UNITS.
  12. PROVIDE UNIT NUMBER SIGNAGE ON THE OUTSIDE OF EACH DOOR 60" MIN. TO CENTER OF SIGN STYLE BY OWNER.

## REVISIONS

DATE	10-26-09
PROJECT	08112.13
SHEET	A102
UNIT PLANS 2A, 2A-HA, 3A	
AND 3A-HA	
DRAWN	CS
CHECKED	SGH

DO NOT SCALE DRAWINGS. DIMENSIONS SHOWN ON DRAWINGS SHALL GOVERN OVER DIMENSIONS INDICATED ON PLANS. CONTRACTOR TO VERIFY ALL DIMENSIONS AND CONDITIONS AT SITE.

© 2009 STEPHEN HILL ARCHITECT. ALL RIGHTS RESERVED. NO PART OF THIS DOCUMENT MAY BE REPRODUCED OR TRANSMITTED IN ANY FORM OR BY ANY MEANS, WITHOUT WRITTEN CONSENT OF THE ARCHITECT.



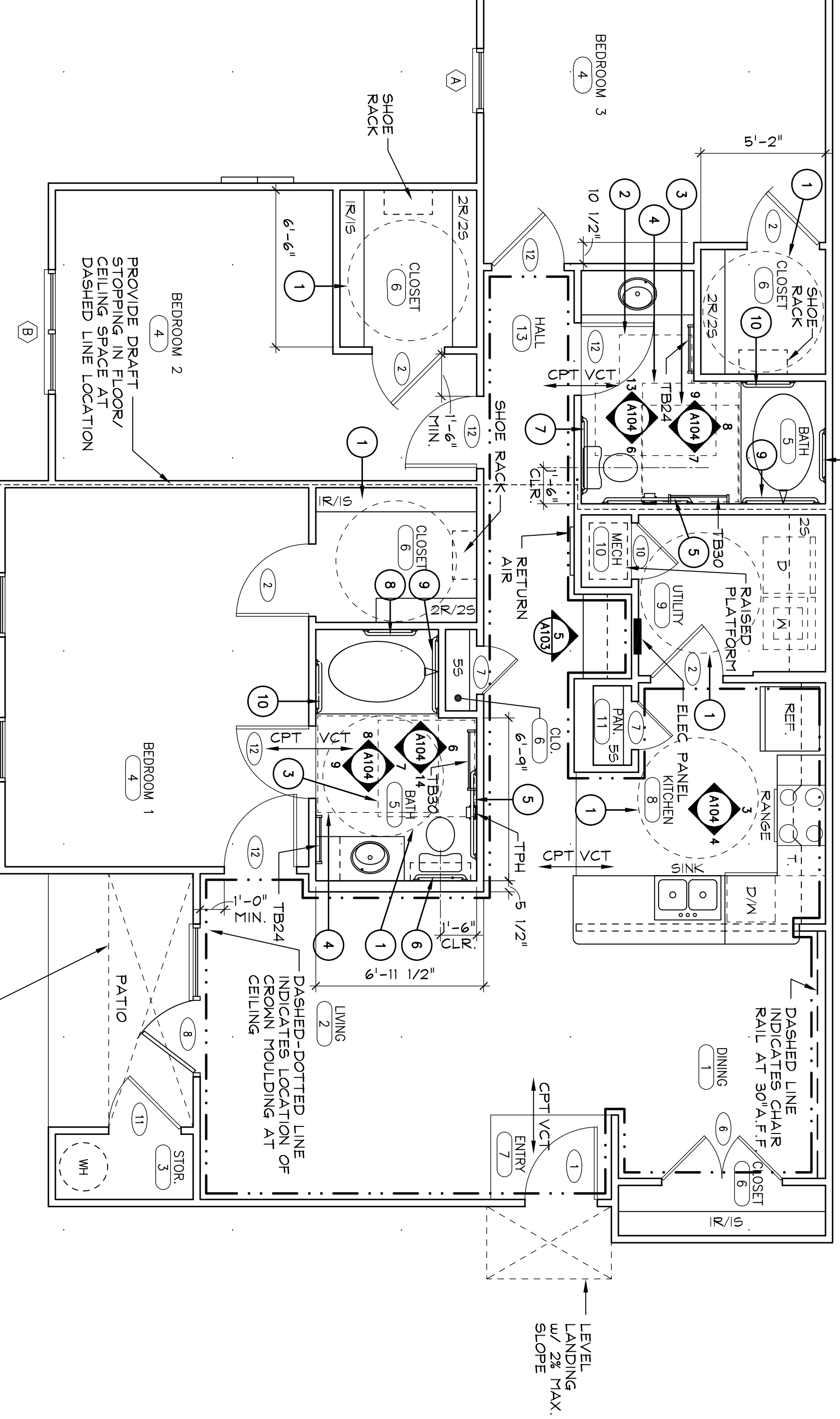
1 FLOOR PLAN UNIT 3A

SCALE: 1/4" = 1'-0"

MEASURED TO INSIDE FACE OF PERIMETER WALLS

ABP-3A

- ### ACCESSIBLE UNIT KEY NOTES
1. WHEELCHAIR TURNING AREA (5' DIA.)
  2. WHEELCHAIR TURNING AREA
  3. 48" x 48" CLEAR SPACE
  4. 48" x 60" CLEAR SPACE
  5. 42" GRAB BAR 12" FROM REAR WALL @ 34" A.F.F.
  6. 24" GRAB BAR CENTERED ON TOILET @ 34" A.F.F.
  7. 36" GRAB BAR MTD. 6" FROM SIDE WALL
  8. TWO 24" GRAB BARS MTD. 24" MAX. FROM HEAD END OF TUB @ 34" A.F.F. AND BOTTOM BAR @ 4" ABOVE RIM OF TUB.
  9. 36" GRAB BAR @ FRONT EDGE OF TUB @ 34" A.F.F.
  10. 24" GRAB BAR @ FRONT EDGE OF TUB @ 34" A.F.F.

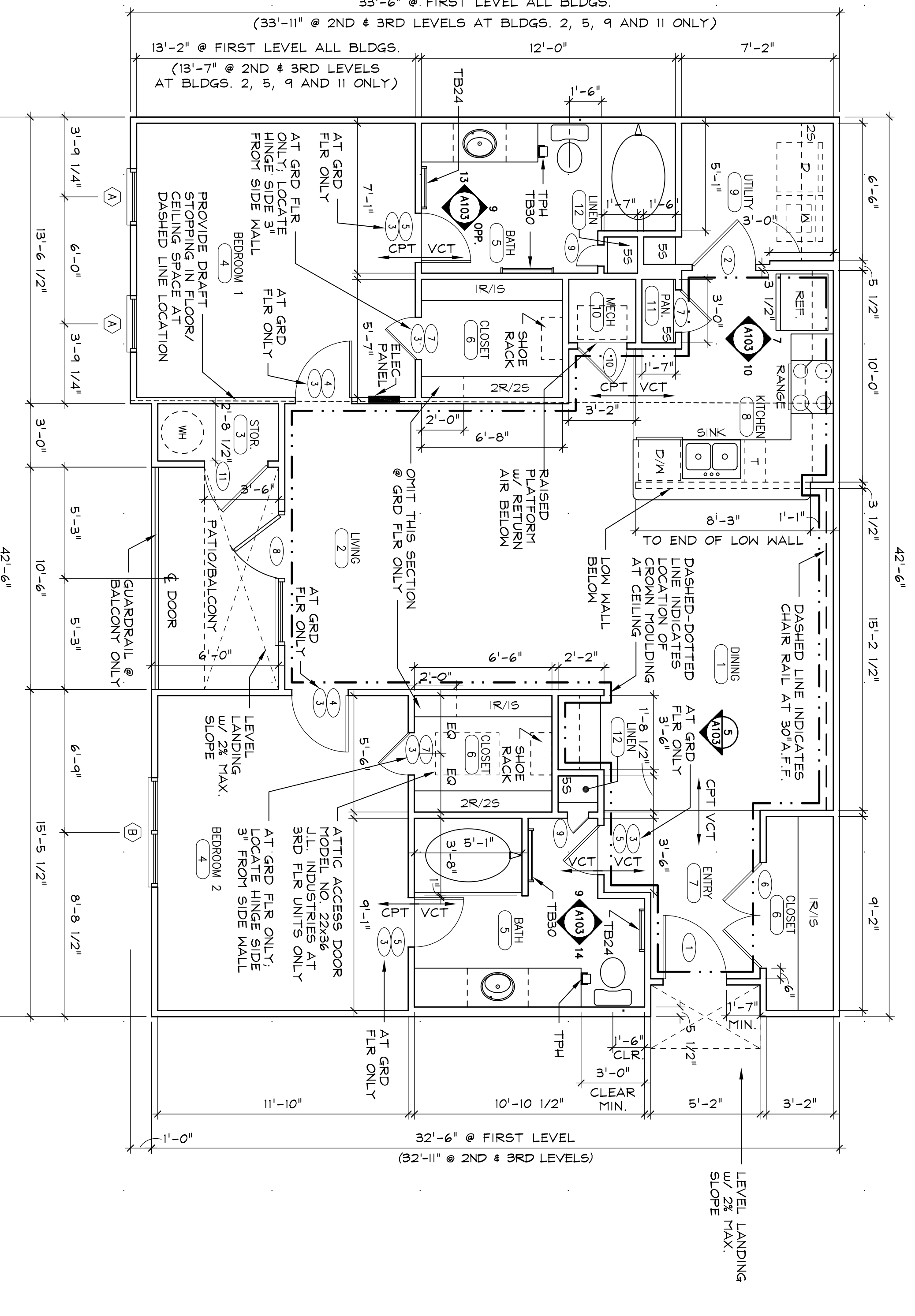


NOTE: DIMENSIONS FOR HANDICAP ACCESSIBLE UNITS ARE IDENTICAL TO NON-ACCESSIBLE UNITS ABOVE EXCEPT WHERE INDICATED.

4 FLOOR PLAN UNIT 3A-HA (HANDICAPPED ACCESSIBLE)

SCALE: 1/4" = 1'-0"

ABP-3A-HC

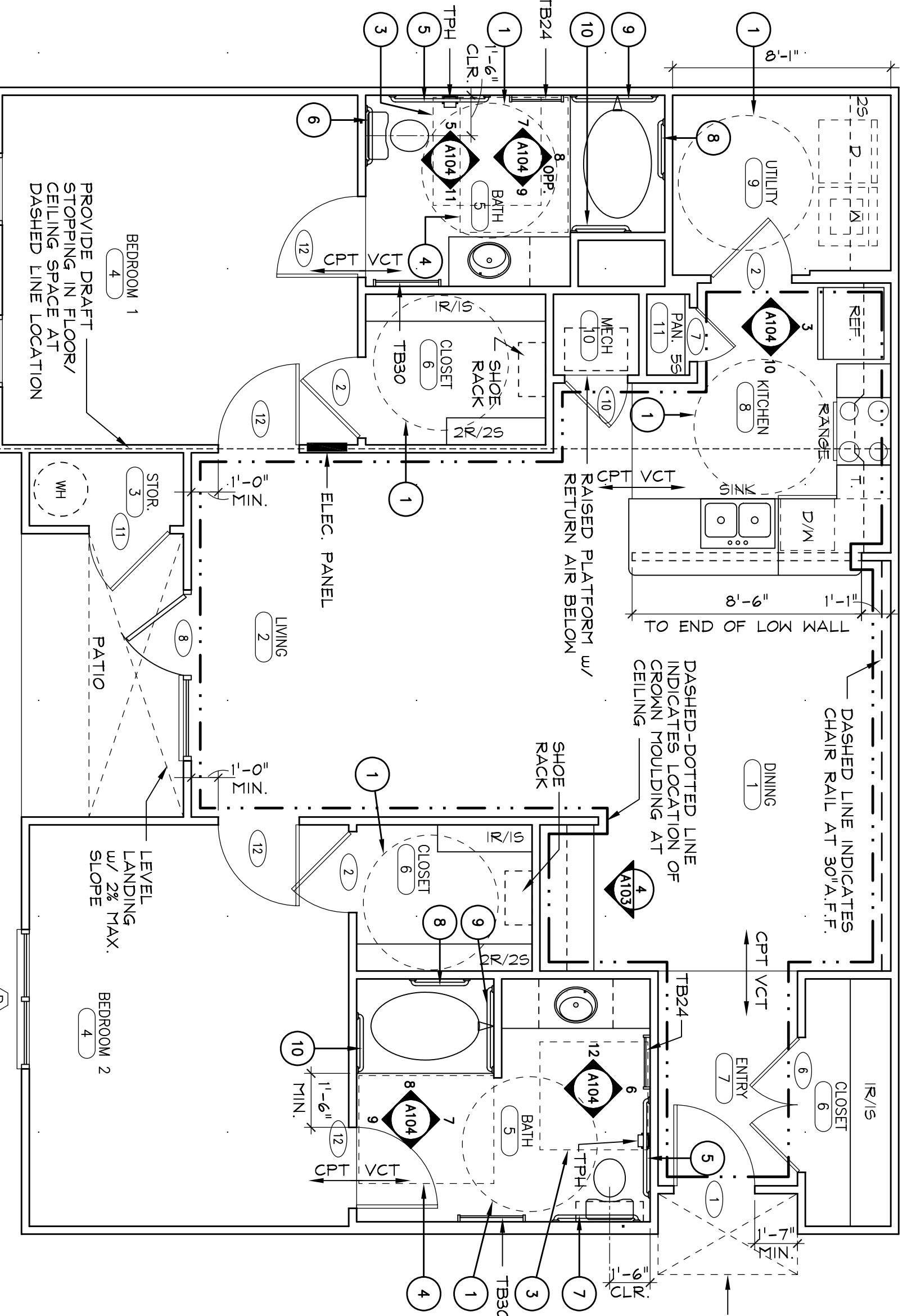


1 FLOOR PLAN UNIT 2A

SCALE: 1/4" = 1'-0"

MEASURED TO INSIDE FACE OF PERIMETER WALLS

ABP-2A



NOTE: DIMENSIONS FOR HANDICAP ACCESSIBLE UNITS ARE IDENTICAL TO NON-ACCESSIBLE UNITS ABOVE EXCEPT WHERE INDICATED.

3 FLOOR PLAN UNIT 2A-HA (HANDICAPPED ACCESSIBLE)

SCALE: 1/4" = 1'-0"

ABP-2A-HC

PROGRESS SET NOT FOR CONSTRUCTION