

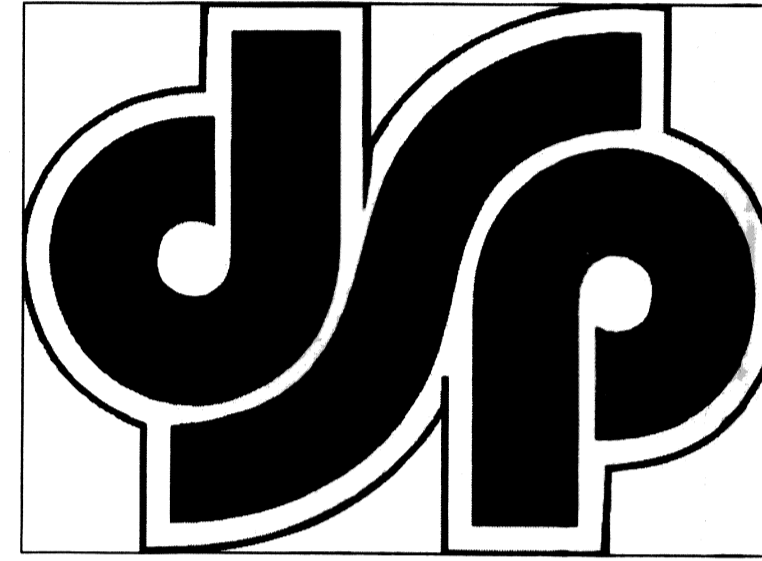
DUDLEY SMITH PRINTING

RENOVATION = 1375 SQ.FT.

TYLER SQUARE

SUITE #1

58465 TYLER STREET
SLIDELL, LA 70458



INTERNATIONAL BUILDING CODE 2009 SUMMARY

OCCUPANCY CLASSIFICATION:
BUSINESS GROUP: B (SEC 304.1)

OCCUPANT LOAD: (TBL 1004.1.1)
BUSINESS = 100 GROSS / OCCUPANT = (1,375/100) = 13.75 OCCUPANTS
TOTAL LOAD = 14.00 OCCUPANTS

EXIT ACCESS REQUIREMENTS: (SEC 1014)
EXIT REQUIRED FOR < 50 OCCUPANTS (TBL 1015.1)
EXIT PROVIDED
MAXIMUM COMMON PATH OF EGRESS TRAVEL = 200' (BUSINESS WITHOUT SPRINKLER, TBL 1016.1)
LONGEST EGRESS PATH IN AREA OF WORK = 44'

CONSTRUCTION CLASSIFICATION: (SEC 602.2)
TYPE IIB

ALLOWABLE HEIGHT AND BLDG. AREA: (TBL 503)
THREE STORY AND 23,000 SQ.FT. (BUSINESS)
THIS BLDG 11,000 SQ.FT. / 1 STORY

FIRE RESISTANCE RATING REQUIREMENTS FOR BLDG. ELEMENTS: (TBL 601)
STRUCTURAL FRAME = 0 HRS.
BEARING WALLS (INTERIOR AND EXTERIOR) = 0 HRS.
NON-BEARING WALLS = 0 HRS.
FLOOR CONSTRUCTION = 0 HRS.
ROOF CONSTRUCTION = 0 HRS.

FIRE RESISTANCE RATING REQUIREMENTS FOR EXTERIOR WALLS: (TBL 602)
EXTERIOR WALLS WITH \geq 30' FIRE SEPARATION DISTANCE = 0 HRS.
EXTERIOR WALLS WITH < 5' FIRE SEPARATION DISTANCE = 1 HR.

MAX. AREA OF EXTERIOR WALL OPENINGS: (TBL 705.8)
BLDG. WITH \geq 30' FIRE SEPARATION DISTANCE ALLOWED UNLIMITED PROTECTED AND UNPROTECTED OPENINGS

AUTOMATIC SPRINKLER SYSTEM REQUIREMENTS: (SEC 903)
THIS BLDG. DOES REQUIRE NOT AN AUTOMATIC SPRINKLER SYSTEM.

FIRE PROTECTION SYSTEM REQUIREMENTS: (SEC 907)
THIS BLDG. SHALL BE NOT REQUIRED TO HAVE AN APPROVED FIRE PROTECTION SYSTEM IN ACCORDANCE WITH SEC 907.2.2.

CONSTRUCTION DOCUMENTS: (SEC 1603)
THIS BLDG. SHALL BE DESIGNED IN ACCORDANCE WITH IBC SECTION 1609 AS A FULLY ENCLOSED BLDG. USING THE FOLLOWING INFORMATION:

WIND DESIGN DATA:
DETERMINATION OF WIND LOADS SHALL BE IN ACCORDANCE WITH IBC SEC 1609.4
BASIC WIND SPEED (3 SECOND GUSTS) = 130 MPH (FIG 1609)
IMPORTANCE FACTOR: CATEGORY II BLDG., IE = 1.00, IS = 1.0, IW = 1.00 (TBL 1604.5)
EXPOSURE B
DESIGN WIND PRESSURE (ASCE 7-05 FIG. 6-2): 33.6 PSF
INTERNAL PRESSURE COEFFICIENT (ASCE 7-05 FIG. 6-5): \pm 0.18
LIVE LOADS: (SEC 1607)
OFFICE (TBL 1607.1): 50 PSF
ROOF LIVE LOAD (TBL 1607.1) = 20 PSF UNIFORM, 300 LB. CONCENTRATED
GROUND SNOW LOAD (FIG. 1608.2) = 5 PSF

NATIONAL FIRE PROTECTION ASSOCIATION 2009 SUMMARY

BUILDING AREA:
TOTAL BUILDING AREA = 11,000 SQ.FT.
AREA TO BE RENOVATED = 1375 SQ.FT.

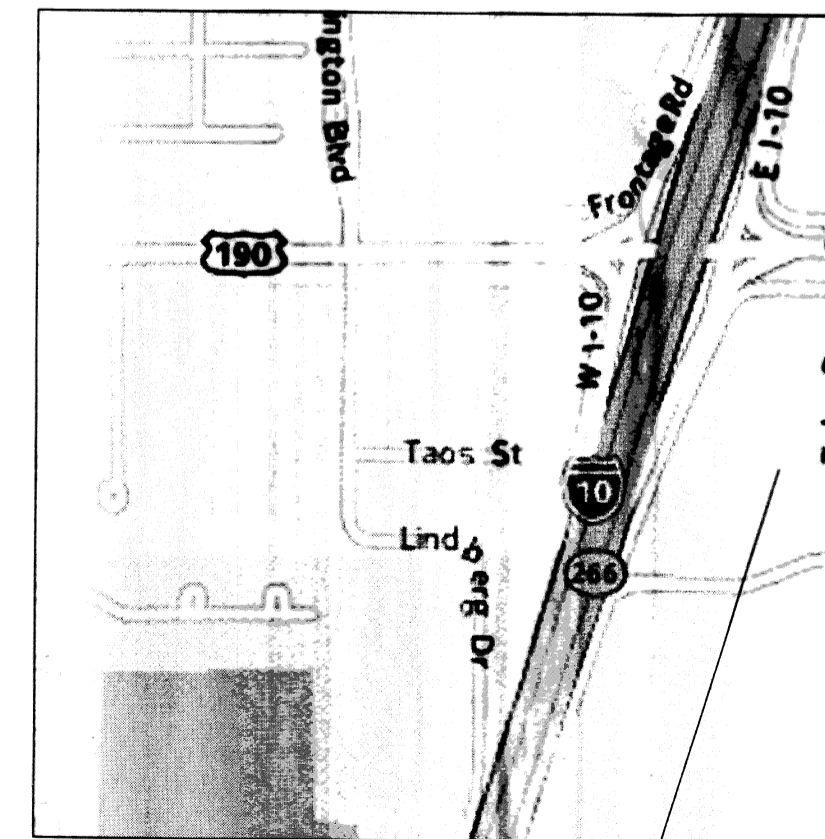
OCCUPANCY CLASSIFICATION:
EXISTING GROUP B (BUSINESS)

OCCUPANT LOAD: (TBL 7.3.1.2)
BUSINESS = 100 GROSS SQ.FT. / OCCUPANT = 1,375 / 100 = 14.00 OCCUPANTS

SPRINKLER SYSTEM: (SEC 39.2.5)
THIS BUILDING SHALL NOT BE REQUIRED TO HAVE AN AUTOMATIC SPRINKLER SYSTEM AT THIS TIME.

FIRE ALARM SYSTEM: (SEC 39.3.4.1)
A FIRE ALARM SYSTEM IS NOT REQUIRED.

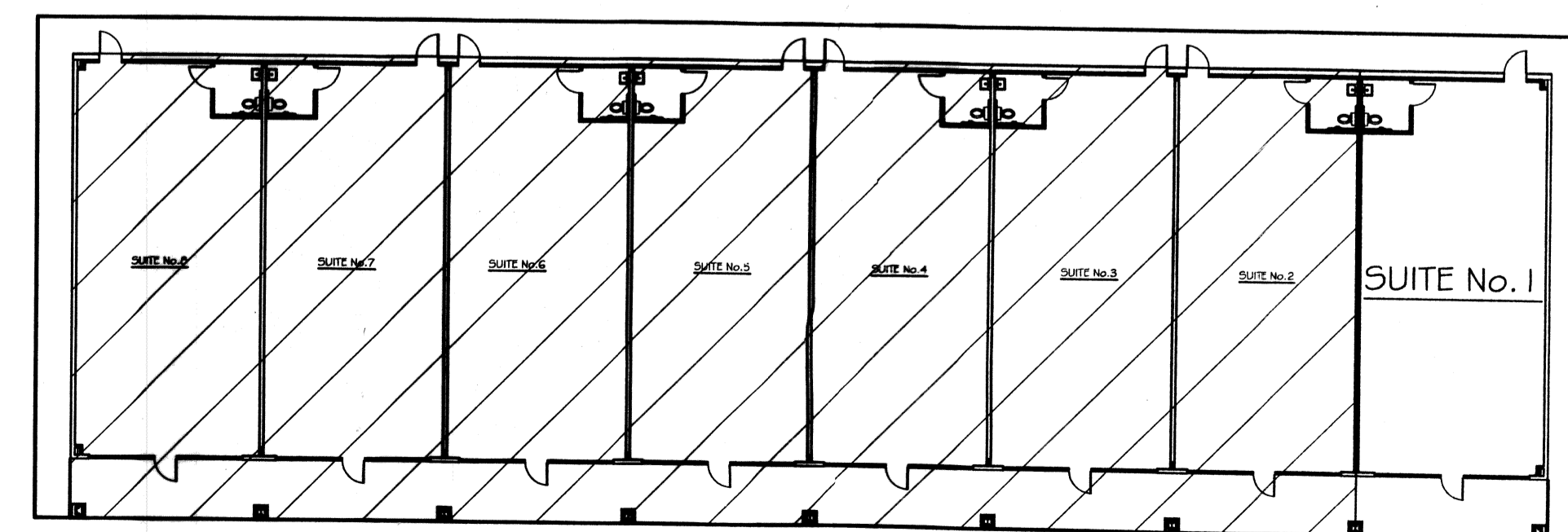
EXIT ACCESS:
EXITS REQUIRED (SEC 39.2.4.1)
EXIT PROVIDED
ALLOWABLE EXIT ACCESS TRAVEL DISTANCE = 200' (SEC 39.2.6.2)
LONGEST EGRESS PATH IN AREA OF WORK = 50'



AREA OF WORK

VICINITY MAP
N.T.S.

INDEX OF DRAWINGS			
SHT#	DWG#	DRAWING NAME	REVISED
1		COVERSHEET	
2	A-1	FLOOR PLAN & REFLECTED CEILING PLAN	
3	M-1	MECHANICAL PLAN	
4	E-1	POWER AND LIGHTING PLAN	



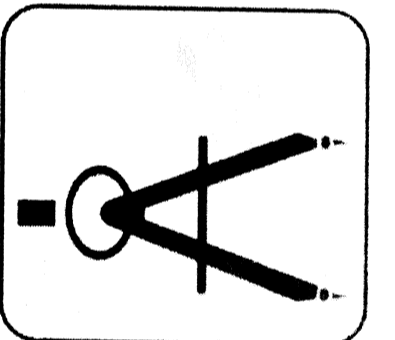
KEY PLAN
N.T.S.

REVIEWED FOR
STATE FIRE MARSHAL
AS PER REVIEW LETTER
BY: JULIE LITTLE ARCHITECT 422670

CHIEF ENGINEER: EMMETT DAMMON, P.E.
CHIEF ARCHITECT: ROBERT WILTSE
554 OLD SPANISH TRAIL
SLIDELL, LA 70458

www.dammoneengineering.com
dammone@dammoneng.com
PHONE: 985-649-5832
FAX: 985-641-9950

DAMMON
ENGINEERING, INC.
Architects & Engineers



DUDLEY SMITH
PRINTING
TYLER SQUARE
58465 TYLER STREET SUITE #1
SLIDELL, LA

JOB No: 2152 DATE: 10/03/2012
DRAWN BY: BSN CHECKED BY: BSN