

SYM.	DESCRIPTION	COMMENTS
⊕	STANDARD 120V DUPLEX RECEPTACLE @ 12" AFF (UNLESS NOTED)	
⊕	DEDICATED RECEPTACLE SEE PANEL SCHEDULE FOR CIRCUIT SIZE	
⊕	GFI RECEPTACLE	ALL OUTLETS WITHIN 40' OF A WATER SOURCE SHALL BE GFI
⊕	WEATHER PROOF 120V DUPLEX RECEPT. @ 30" AFF (UNLESS NOTED)	
⊕	RECEPTACLE @ 6" ABOVE COUNTER	
⊕	QUAD CAT.5 JACK WITH FACEPLATE NETWORKING CONNECTION	
⊕	POWER DISCONNECT	
⊕	ELECTRIC WATER HEATER SIZE AS NOTED	
⊕	AIR CONDITIONING COND. UNIT SEE MECH SHEETS FOR UNIT DETAILS	
NOTES: 1. CONNECT ALL EMERGENCY / EXIT LIGHT FIXTURES TO NEAREST CONSTANT POWER SOURCE.		

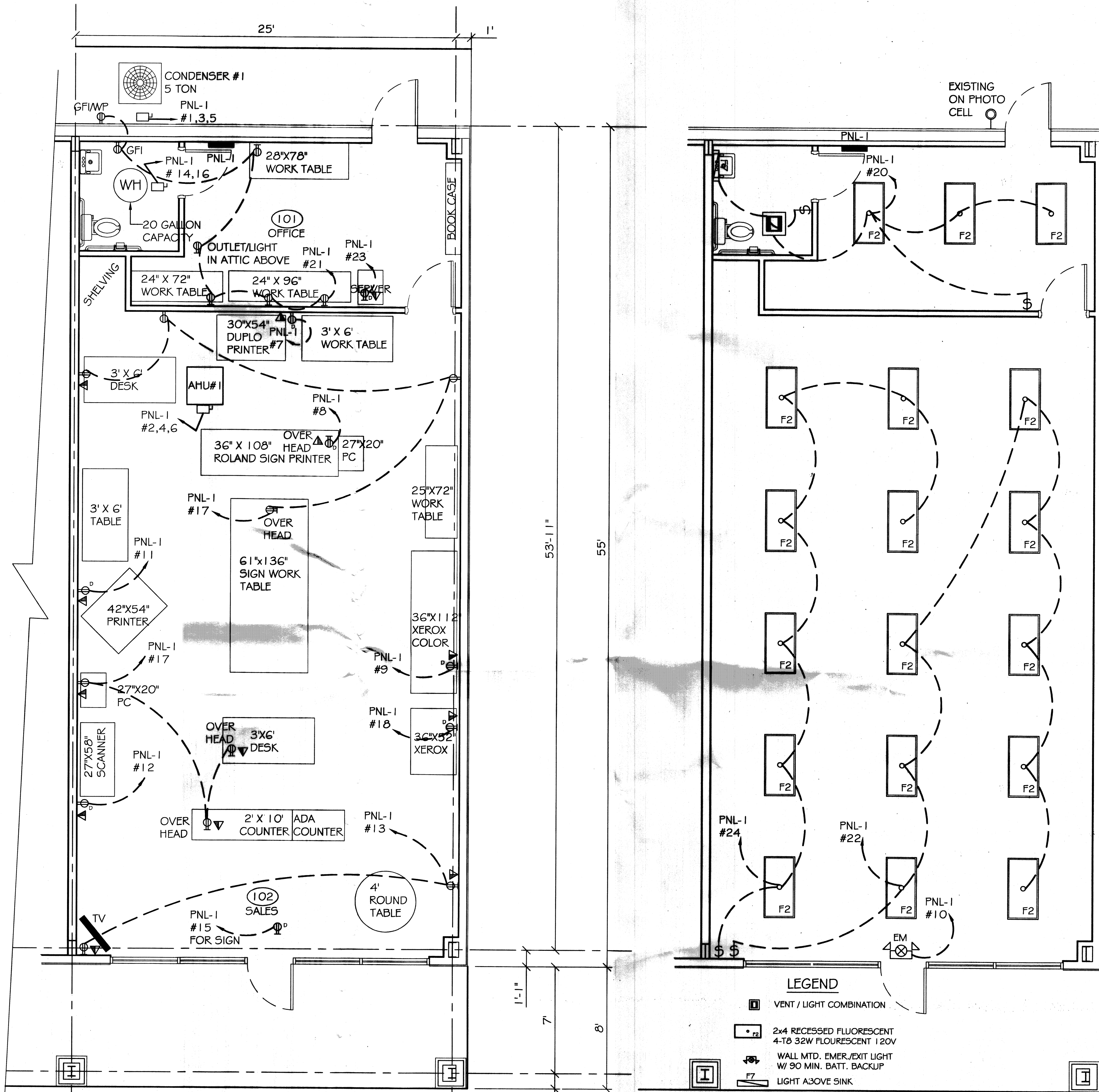
**EQUIPMENT NOTES:**

- EQUIPMENT LAYOUT, ELECTRICAL AND MECHANICAL DETAILS ARE BASED ON THE INFORMATION PROVIDED BY THE OWNER. CONTRACTOR TO COORDINATE ANY CORRESPONDING CHANGES TO EQUIPMENT SELECTION, LAYOUT, MECHANICAL AND ELECTRICAL REQUIREMENTS WITH THE OWNER.
- CONTRACTOR TO COORDINATE EQUIPMENT REQUIREMENTS WITH ARCHITECTURAL, MECHANICAL AND PLUMBING DISCIPLINES.
- SMOKE DETECTORS SHALL NOT BE INSTALLED CLOSER THAN 1'-0" TO A LIGHT FIXTURE OR WITHIN 3'-0" FROM A HVAC AIRHURTU AIR SUPPLY DIFFUSER.
- MECHANICAL EXHAUST FAN SUPPLIED BY MECHANICAL CONTRACTOR.
- PROVIDE 3/4" EMT AT ALL DATA JACKS TO ROOF OR CEILING ABOVE.

**ELECTRICAL NOTES**

- ALL WORK SHALL CONFORM TO THE LATEST EDITION OF THE NATIONAL ELECTRICAL CODE, THE GOVERNING ELECTRICAL CODE AND ALL OTHER INSPECTION DEPARTMENTS HAVING JURISDICTION. OBTAIN CERTIFICATES OR APPROVAL WHERE REQUIRED.
- ALL MATERIALS FURNISHED SHALL BE NEW AND SHALL BE U.L. LISTED.
- THE DRAWINGS INDICATE SIZE AND GENERAL LOCATION OF WORK. SCALE DIMENSIONS SHALL NOT BE USED. THE EXACT LOCATION AND LOCATION OF ALL LIGHTING FIXTURES, RECEPTABLES AND TELEPHONE OUTLETS, ETC. SHALL BE DETERMINED BY ACTUAL CONDITIONS IN THE FIELD.
- PRIOR TO BIDDING, CONTRACTOR SHALL VISIT THE JOB SITE AND FAMILIARIZE THEMSELVES WITH THE EXISTING CONDITIONS.
- ELECTRICAL CONTRACTOR SHALL COORDINATE HIS WORK WITH OTHER TRADES AND WITH OTHER CONTRACTORS WHOSE WORK MAY AFFECT THIS INSTALLATION.
- ELECTRICAL CONTRACTOR SHALL COORDINATE INCOMING ELECTRICAL SERVICE WITH UTILITY COMPANY AND INCLUDE IN HIS BID ALL CHARGES AND FEES INCURRED IN MODIFICATIONS.
- WHERE MORE THAN ONE SWITCH OCCURS IN THE SAME LOCATION, THEY SHALL BE INSTALLED IN A GANG TYPE BOX UNDER ONE COVER PLATE.
- ELECTRICAL CONTRACTOR SHALL COORDINATE THE TELEPHONE INSTALLATION WITH THE TELEPHONE COMPANY AND THE GENERAL CONTRACTOR.
- ELECTRICAL CONTRACTOR, BEFORE INSTALLING ANY OF THE WORK, SHALL SEE THAT IT DOES NOT INTERFERE WITH CLEARANCES REQUIRED FOR FINISHED CEILINGS, HUNG CEILINGS, PLASTER, PARTITIONS, WALLS, ETC. AS SHOWN IN THE ARCHITECTURAL DRAWINGS AND DETAILS. IF ANY WORK IS INSTALLED AND IT LATER DEVELOPS THAT SUCH DETAILS OR DESIGN CANNOT BE FOLLOWED, THE CONTRACTOR, AT HIS OWN EXPENSE, SHALL MAKE SUCH CHANGES IN THE WORK AS DIRECTED BY THE ARCHITECT, AS WELL AS TO PERMIT THE INSTALLATION OF THE ARCHITECTURAL WORK AS SHOWN ON THE PLANS AND DETAILS.
- PERFORM TEST REQUIRED BY THE OWNER OR THE ENGINEER IN CONNECTION WITH THE OPERATION OF THE ELECTRICAL SYSTEM IN THE BUILDING.
- ALL TESTS SHALL BE MADE IN ACCORDANCE WITH THE LATEST STANDARD OF THE IEEE AND THE NATIONAL ELECTRICAL CODE.
- MINIMUM CONDUCTOR SIZE SHALL BE #12, GOV. INSULATION, MINIMUM SIZE CONDUIT SHALL BE 3/4" EMT FOR INTERIOR USE, AND 3/4" RIGID ALUMINUM FOR EXTERIOR USE. USE TYPE NMC CABLE COPPER FOR LIGHTS AND RECEPTACLE CIRCUITS. EXTERIOR FITTINGS SHALL BE CAST BOXES AND COVERS. INTERIOR FITTINGS SHALL BE CAST WHERE EXPOSED ON WALLS. STAMPED BOXES MAY BE USED ABOVE CEILINGS IN AIR CONDITIONED SPACES. WHERE LAY IN FIXTURES ARE IN USE, USE 1/4" 2 ALLOWED FOR 6" WIDTH.
- CONTRACTOR SHALL INSTALL WIRING AND OTHER CIRCUIT COMPONENTS TO MATCH EQUIPMENT ACTUALLY INSTALLED.
- INSTALL GROUND FAULT RECEPTABLES AT RECEPTACLE LOCATIONS WITHIN 5' OF SINKS OR LAVATORIES, AND AT EXTERIOR LOCATIONS. EXTERIOR RECEPTABLES SHALL ALSO BE WATERPROOF.
- BONDING AND GROUNDING SHALL BE IN ACCORDANCE WITH NFPA 70:230-63, NFPA 250-23, 250-71 & 250-72.
- GROUND NEUTRAL IN ACCORDANCE WITH NFPA 70:250-23b.
- FUSES SHALL BE ITI CLASS K5, 250 VOLT, 200,000 AMP INTERRUPTING CAP.
- PROVIDE SERVICES OF A FIRE/SMOKE DETECTION AND ALARM COMPANY TO DESIGN AND INSTALL ALARM SYSTEM TO MEET REQUIREMENTS OF THE STATE FIRE MARSHAL.
- EXTERIOR LIGHTING SHALL BE SHADOWED OR INWARDLY DIRECTED IN SUCH A MANNER SO THAT NO DIRECT LIGHTING OR GLARE IS CAST BEYOND THE PROPERTY LINE. THE INTENSITY OF SUCH LIGHTING SHALL NOT EXCEED ONE FOOT CANDLE AS MEASURED AT THE ADJUTING PROPERTY LINE.
- ALL ELECTRICAL, MECHANICAL AND PLUMBING PENETRATING FIRE PARTITIONS SHALL BE FIRE CALKED. (PENETRATIONS THROUGH RATED CONSTRUCTION SHALL BE SEALED WITH A MATERIAL CAPABLE OF PREVENTING THE PASSAGE OF FLAMES AND HOT GASES WHEN TESTED IN ACCORDANCE WITH ASTM-E814.)

PANEL: PNL-1 LOCATION: ELECTRICAL ROOM FEEDER SOURCE: CLECO		VOLTAGE: 120/208V, 150A 3Ø, 4W ENCLOSURE: WALL MOUNTED W/EQUIPMENT GND BAR SQUARE D TYPE QO LOAD CENTER, 22000 AIC, W/ MAIN BRKR							
CKT. NO.	THIN SIZE	LOAD DESCRIPTION LOCATION	BREAKER AMP POLE	LOAD (VA) A B C Ø	LOAD (VA) A B C Ø	BREAKER AMP POLE	LOAD DESCRIPTION LOCATION	THIN SIZE	CKT. NO.
1				2120	3260				2
3	#8	A/C #1 5 TON CONDENSER UNIT	40 3	2120	3260	3 60	A/C #1 AHU 15KW ELECTRIC HEAT	#8	4
5				2120	3260				6
7	#12	DUPLO PRINTER	20 1	1617	1080	1 20	ROLAND SIGN PRINTER	#12	8
9	#12	XEROX COLOR	20 1	3340	300 1	20	EXIT LIGHT & EMERGENCY LIGHT	#12	10
11	#12	OCE PRINTER	20 1	1305	105 1	20	OCE SCANNER	#12	12
13	#12	TV/ FRONT OUTLET	20 1	320	4000	2 30	WATER HEATER 20 GAL	#10	14
15	#12	SIGN OUTLET	20 1	200	4000				16
17	#12	COUNTER/DESK/COMPUTER OUTLET	20 1	480	3100	1 20	XEROX BW	#12	18
19	#12	TABLE/WALL OUTLETS	20 1	640	1000	1 20	OFFICE/BATH LIGHTS	#12	20
21	#12	OFFICE OUTLETS	20 1	960	1600	1 20	SALES LIGHTS	#12	22
23	#12	SERVER OUTLET	20 1	160	1400	1 20	SALES LIGHTS	#12	24
25	-	SPARE	20 1	-	-	1	SPARE	-	26
27	-	SPARE	20 1	-	-	1	SPARE	-	28
29	-	BLANK	-	-	-	-	BLANK	-	30
				TOTAL CONNECTED LOAD (VA)					
				A=14037 B=15780 C=11930				GROUND BUS GROUND WIRE (Ø)	



**POWER PLAN**  
SCALE: 1/4" = 1'-0"

**LIGHTING PLAN**  
SCALE: 1/4" = 1'-0"

422670  
REVIEWED FOR  
STATE FIRE MARSHAL  
AS PER REVIEW LETTER  
BY: JULIE LITTLE ARCHITECT

**DUDLEY SMITH PRINTING**  
TYLER SQUARE  
504-65 TYLER STREET SUITE #1  
SUPELL LA  
JOB No: 2155 DATE: 10-3-12  
DRAWN BY: BSN CHECKED BY: BSN