

EQUIPMENT NOTES:

- EQUIPMENT LAYOUT, ELECTRICAL AND MECHANICAL DETAILS ARE BASED ON THE INFORMATION PROVIDED BY THE OWNER. CONTRACTOR TO COORDINATE ANY CORRESPONDING CHANGES TO EQUIPMENT SELECTION, LAYOUT, MECHANICAL AND ELECTRICAL REQUIREMENTS WITH THE OWNER.
- CONTRACTOR TO COORDINATE EQUIPMENT REQUIREMENTS WITH ARCHITECTURAL, MECHANICAL, AND PLUMBING DISCIPLINES.
- SMOKE DETECTORS SHALL NOT BE INSTALLED CLOSER THAN 1'-0" TO A LIGHT FIXTURE OR WITHIN 3'-0" FROM A HVAC AIR/RETURN AIR SUPPLY DIFFUSER.
- MECHANICAL EXHAUST FAN SUPPLIED BY MECHANICAL CONTRACTOR.
- PROVIDE 3/4" EMT AT ALL DATA JACKS TO ROOF OR CEILING ABOVE.

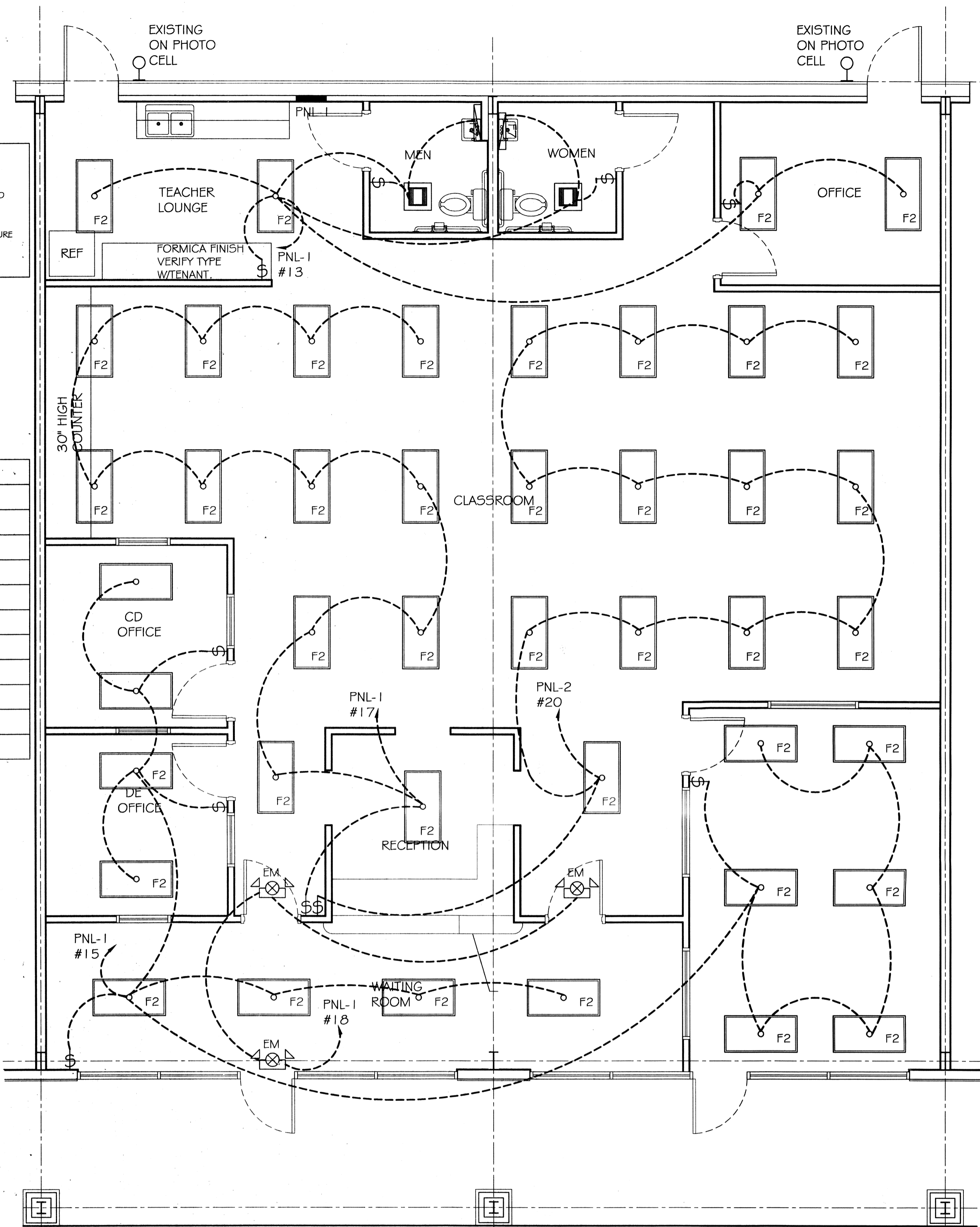
LEGEND

- VENT / LIGHT COMBINATION
- 2x4 RECESSED FLUORESCENT 4-T8 32W FLUORESCENT 120V
- WALL MTD. EMER/EXIT LIGHT W/ 90 MIN. BATT. BACKUP
- LIGHT ABOVE SINK

POWER PLAN LEGEND

SYM.	DESCRIPTION	COMMENTS
⊕	STANDARD 120V DUPLEX RECEPTACLE @ 15" AFF (UNLESS NOTED)	
⊕	DEDICATED RECEPTACLE SIZE PANEL SCHEDULE FOR CIRCUIT SIZE	
⊕	GFI RECEPTACLE	ALL OUTLETS WITHIN 48" OF A WATER SOURCE SHALL BE GFI
⊕	WEATHER PROOF 120V DUPLEX RECEPT. @ 30" AFF (UNLESS NOTED)	
⊕	RECEPTACLE @ 6" ABOVE COUNTER	
⊕	QUAD CAT. 5 JACK WITH FACEPLATE NETWORKING CONNECTION	
⊕	POWER DISCONNECT	
⊕	ELECTRIC WATER HEATER SIZE AS NOTED	
⊕	AIR CONDITIONING COND. UNIT SEE MECH SHEETS FOR UNIT DETAILS	

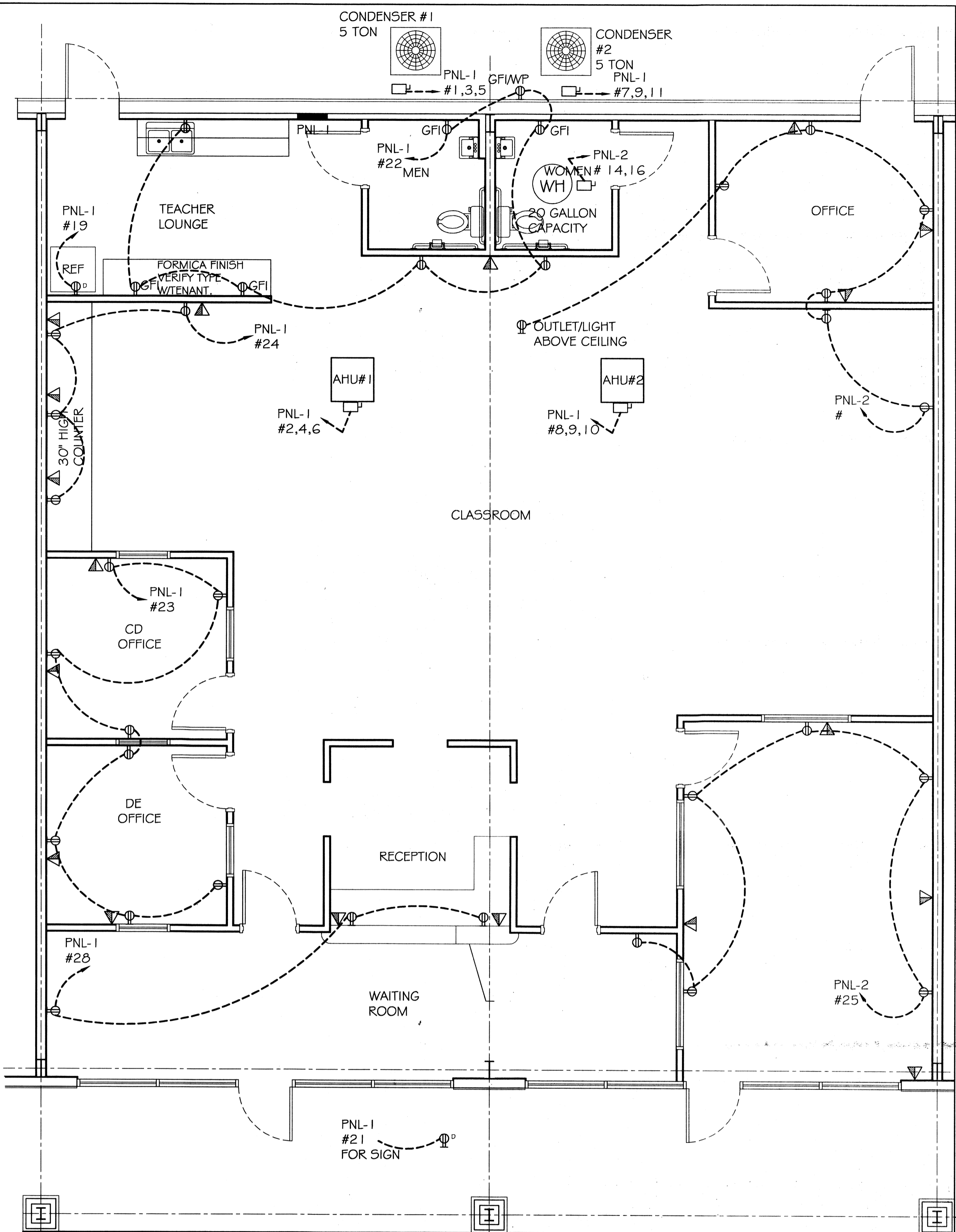
NOTES:
1. CONNECT ALL EMERGENCY / EXIT LIGHT FIXTURES TO NEAREST CONSTANT POWER SOURCE.



LIGHTING PLAN
SCALE: 1/4" = 1'-0"

ELECTRICAL NOTES

- ALL WORK SHALL CONFORM TO THE LATEST EDITION OF THE NATIONAL ELECTRICAL CODE, THE GOVERNING ELECTRICAL CODE AND ALL OTHER INSPECTION DEPARTMENTS HAVING JURISDICTION. OBTAIN CERTIFICATES OR APPROVAL WHERE REQUIRED.
- ALL MATERIALS FURNISHED SHALL BE NEW AND SHALL BE U.L. LISTED.
- THE DRAWINGS INDICATE SIZE AND GENERAL LOCATION OF WORK. SCALE DIMENSIONS SHALL NOT BE USED. THE EXACT LOCATION AND LOCATION OF ALL LIGHTING FIXTURES, RECEPTACLES AND TELEPHONE OUTLETS, ETC. SHALL BE DETERMINED BY ACTUAL CONDITIONS IN THE FIELD.
- PRIOR TO BIDDING, CONTRACTOR SHALL VISIT THE JOB SITE AND FAMILIARIZE THEMSELVES WITH THE EXISTING CONDITIONS.
- ELECTRICAL CONTRACTOR SHALL COORDINATE HIS WORK WITH OTHER TRADES AND WITH OTHER CONTRACTORS WHOSE WORK MAY AFFECT THIS INSTALLATION.
- ELECTRICAL CONTRACTOR SHALL COORDINATE INCOMING ELECTRICAL SERVICE WITH UTILITY COMPANY AND INCLUDE IN HIS BID ALL CHARGES AND FEES INCURRED IN MODIFICATIONS.
- WHERE MORE THAN ONE SWITCH OCCURS IN THE SAME LOCATION, THEY SHALL BE INSTALLED IN A GANG TYPE BOX UNDER ONE COVER PLATE.
- ELECTRICAL CONTRACTOR SHALL COORDINATE THE TELEPHONE INSTALLATION WITH THE TELEPHONE COMPANY AND THE GENERAL CONTRACTOR.
- ELECTRICAL CONTRACTOR, BEFORE INSTALLING ANY OF THE WORK, SHALL SEE THAT IT DOES NOT INTERFERE WITH CLEARANCES REQUIRED FOR FINISHED COLUMNS, HUNG CEILING, PLASTER, PARTITIONS, WALLS, ETC. AS SHOWN IN THE ARCHITECTURAL DRAWINGS AND DETAILS. IF ANY WORK IS INSTALLED AND IT LATER DEVELOPS THAT SUCH DETAILS OR DESIGN CANNOT BE FOLLOWED, THE CONTRACTOR, AT HIS OWN EXPENSE, SHALL MAKE SUCH CHANGES IN THE WORK AS DIRECTED BY THE ARCHITECT, AS WELL AS TO PERMIT THE INSTALLATION OF THE ARCHITECTURAL WORK AS SHOWN ON THE PLANS AND DETAILS.
- PERFORM TEST REQUIRED BY THE OWNER OR THE ENGINEER IN CONNECTION WITH THE OPERATION OF THE ELECTRICAL SYSTEM IN THE BUILDING.
- ALL TESTS SHALL BE MADE IN ACCORDANCE WITH THE LATEST STANDARD OF THE IEEE AND THE NATIONAL ELECTRICAL CODE.
- MINIMUM CONDUCTOR SIZE SHALL BE #12, 600V INSULATION. MINIMUM SIZE CONDUIT SHALL BE 3/4" EMT FOR INTERIOR USE, AND 1-1/2" RIGID ALUMINUM FOR EXTERIOR USE. USE TYPE NMC CABLE COPPER FOR LIGHTS AND RECEPTACLE CIRCUITS. EXTERIOR FITTINGS SHALL BE CAST BRONZE AND COVERED. INTERIOR FITTINGS SHALL BE CAST IRON WHERE EXPOSED ON WALLS. STAMPED ROOMS MAY BE USED ABOVE CEILING IN AIR-CONDITIONED SPACES, WHERE LAY IN FIXTURES ARE IN USE, USE 1/4" 2 ALLOWED FOR 6" WIDTH.
- CONTRACTOR SHALL INSTALL WIRING AND OTHER CIRCUIT COMPONENTS TO MATCH EQUIPMENT ACTUALLY INSTALLED.
- INSTALL GROUND FAULT RECEPTACLES AT RECEPTACLE LOCATIONS WITHIN 5' OF SINKS OR LAVATORIES, AND AT EXTERIOR LOCATIONS. EXTERIOR RECEPTACLES SHALL ALSO BE WATERPROOF.
- BONDING AND GROUNDING SHALL BE IN ACCORDANCE WITH NFPA 70-230-63, NFPA 250-23, 250-71 & 250-72.
- GROUNDING SHALL BE IN ACCORDANCE WITH NFPA 70-250-38.
- FUSES SHALL BE ITT CLASS K5, 250 VOLT, 200,000 AMP INTERRUPTING CAP.
- PROVIDE SERVICES OF A FIRE-RESISTANT DETECTION AND ALARM COMPANY TO DESIGN AND INSTALL ALARM SYSTEM TO MEET REQUIREMENTS OF THE STATE FIRE MARSHAL.
- EXTERIOR LIGHTING SHALL BE SHADDED OR SHOWN IN SUCH A MANNER SO THAT NO DIRECT LIGHTING OR GLARE IS CAST BEYOND THE PROPERTY LINE. THE INTENSITY OF SUCH LIGHTING SHALL NOT EXCEED ONE FOOT CANDLE AS MEASURED AT THE ADJACENT PROPERTY LINE.
- ALL ELECTRICAL, MECHANICAL AND PLUMBING PENETRATING FIRE PARTITIONS SHALL BE FIRE CALLED. PENETRATIONS THROUGH RATED CONSTRUCTION SHALL BE SEALED WITH A MATERIAL CAPABLE OF PREVENTING THE PASSAGE OF FLAMES AND HOT GASES WHEN TESTED IN ACCORDANCE WITH ASTM-E814.



POWER PLAN
SCALE: 1/4" = 1'-0"

PANEL: PNL-1
LOCATION: ELECTRICAL ROOM
FEEDER SOURCE: CLECO

VOLTAGE: 120/208V, 150A 3Ø, 4W
ENCLOSURE: WALL MOUNTED W/EQUIPMENT GND BAR
SQUARE D TYPE OQ LOAD CENTER, 22000AIC, W/ MAIN BRKR

CIR. NO.	THIN SIZE	LOAD DESCRIPTION	LOCATION	BREAKER AMP	POLE	LOAD (VA)	LOAD (VA)	BREAKER AMP	LOAD DESCRIPTION	THIN SIZE	CIR. NO.
1						2120	3260				2
3	#8	A/C #1 5 TON CONDENSOR UNIT		40	3	2120	3260	3	60	A/C #1 15KW ELECTRIC HEAT	#8
5						2120	3260				6
7						2120	3260				8
9	#8	A/C #2 5 TON CONDENSOR UNIT		40	3	2120	3260	3	60	A/C #2 15KW ELECTRIC HEAT	#8
11						2120	3260				12
13	#12	LOUNGE/BATH/OFFICE LIGHTING		20	1	1400	4000				14
15	#12	OFFICE/WAITING/SEMINAR LITG		20	1	2800	4000	2	30	WATER HEATER 20 GAL	#10
17	#12	SUITE 4 LIGHTING		20	1	2400	3100	1	600	EXIT/EMERGENCY LIGHTING	#12
19	#12	REFRIGERATOR		20	1	160	2800	1	20	SUITE 3 LIGHTING	#12
21	#12	SIGN OUTLET		20	1	160	1280	1	20	LOUNGE/BATHROOMS OUTLETS	#12
23	#12	SUITE 3/ OFFICE OUTLETS		20	1	1120	640	1	20	COMPUTER OUTLETS	#12
25	#12	SEMINAR OUTLETS		20	1	960	1280	1	20	OFFICE OUTLETS	#12
27	#12	SPARE		20	1	-	480	1	20	WAITING/RECEPTION OUTLETS	#12
29		BLANK		-	-	-	-	-	-	BLANK	30
						TOTAL CONNECTED LOAD (VA)	21360	DM=18000	CM=18320		

— SOLID NEUTRAL
— NEUTRAL WIRE (N)

GROUND BUS
GROUND WIRE (G)

DAMMON ENGINEERING, INC.
Architects & Engineers

Sylvan Learning
5345 TYLER STREET SUITE #3 & #4
SUPELLA

DATE: 10-11-12
JOB No: 2153
DATE: 10-11-12
CHECKED BY: BSN
DRAWN BY: BSN

REVISIONS

423139
REVIEWED FOR STATE FIRE MARSHAL AS PER REVIEW LETTER BY WILLIAM D. JONES, ARCHITECT CBO
William D. Jones

LIGHTING & POWER PLAN

SHEET No: 4 OF 4

E-1