

**DAMMON**  
ENGINEERING, INC.

CHIEF ENGINEER  
EMMETT  
DAMMON, P. E.

CHIEF ARCHITECT  
ROBERT  
WILTSE

1095 FLORIDA AVENUE  
SLIDELL, LA. 70456  
OFFICE: 985-649-5832  
FAX: 985-641-5950

WEBSITE:  
[WWW.DAMMONENGINEERING.COM](http://WWW.DAMMONENGINEERING.COM)  
EMAIL:  
[DAMMONENG@BELL.SOUTH.NET](mailto:DAMMONENG@BELL.SOUTH.NET)

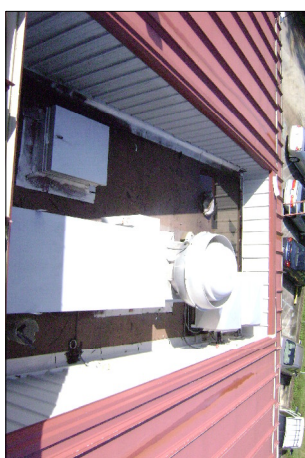
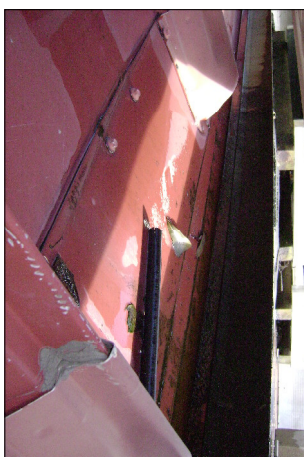
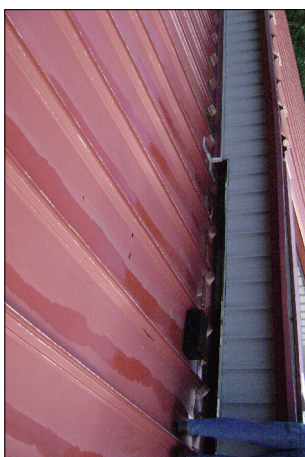
ARCHITECTURE  
ENGINEERING  
STUDIES

PLANNING  
INVESTIGATION  
EXPERT WITNESS

**BUILDING  
REROOFINGS**

SIXTH WARD  
JUNIOR HIGH 'S  
CAFETORIUM  
& GYMNASIUM  
PEARL RIVER, LA

**EXISTING  
PHOTOS**



GYMNASIUM

CAFETORIUM

EXISTING PHOTOS

OF

**A-3**

REV:  
SCALE: AS NOTED  
JOB#: 2047  
DATE: 3-10-10  
SHEET