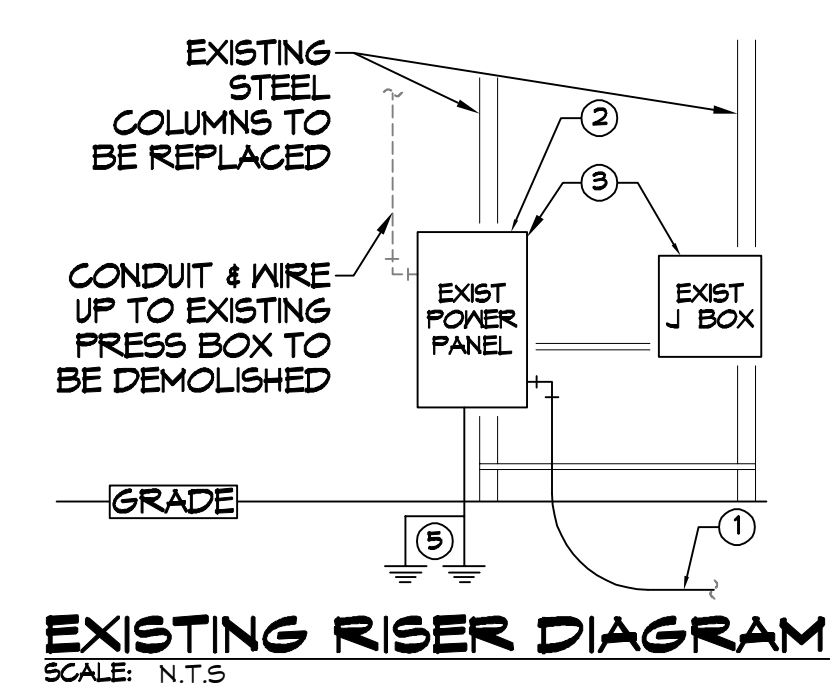
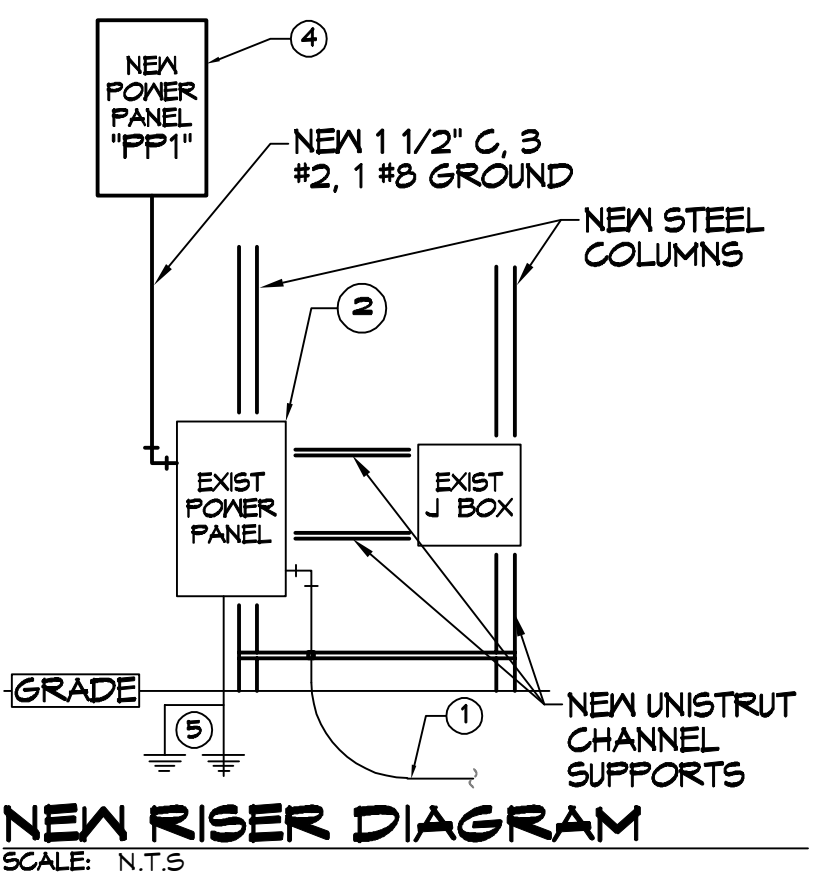


ELEC. DRAWING - ALL WORK SHALL BE IN ACCORDANCE WITH THE LATEST EDITIONS OF THE NATIONAL ELECTRICAL CODE (NEC), NATIONAL FIRE ALARM AND SIGNAL CODE (NFPA 72), NATIONAL ELECTRICAL SAFETY CODE (NFPA 70E), NATIONAL ELECTRICAL SAFETY CODE (NFPA 70), NATIONAL ELECTRICAL SAFETY CODE (NFPA 708), NATIONAL ELECTRICAL SAFETY CODE (NFPA 709), NATIONAL ELECTRICAL SAFETY CODE (NFPA 710), NATIONAL ELECTRICAL SAFETY CODE (NFPA 711), NATIONAL ELECTRICAL SAFETY CODE (NFPA 712), NATIONAL ELECTRICAL SAFETY CODE (NFPA 713), NATIONAL ELECTRICAL SAFETY CODE (NFPA 714), NATIONAL ELECTRICAL SAFETY CODE (NFPA 715), NATIONAL ELECTRICAL SAFETY CODE (NFPA 716), NATIONAL ELECTRICAL SAFETY CODE (NFPA 717), NATIONAL ELECTRICAL SAFETY CODE (NFPA 718), NATIONAL ELECTRICAL SAFETY CODE (NFPA 719), NATIONAL ELECTRICAL SAFETY CODE (NFPA 720), NATIONAL ELECTRICAL SAFETY CODE (NFPA 721), NATIONAL ELECTRICAL SAFETY CODE (NFPA 722), NATIONAL ELECTRICAL SAFETY CODE (NFPA 723), NATIONAL ELECTRICAL SAFETY CODE (NFPA 724), NATIONAL ELECTRICAL SAFETY CODE (NFPA 725), NATIONAL ELECTRICAL SAFETY CODE (NFPA 726), NATIONAL ELECTRICAL SAFETY CODE (NFPA 727), NATIONAL ELECTRICAL SAFETY CODE (NFPA 728), NATIONAL ELECTRICAL SAFETY CODE (NFPA 729), NATIONAL ELECTRICAL SAFETY CODE (NFPA 730), NATIONAL ELECTRICAL SAFETY CODE (NFPA 731), NATIONAL ELECTRICAL SAFETY CODE (NFPA 732), NATIONAL ELECTRICAL SAFETY CODE (NFPA 733), NATIONAL ELECTRICAL SAFETY CODE (NFPA 734), NATIONAL ELECTRICAL SAFETY CODE (NFPA 735), NATIONAL ELECTRICAL SAFETY CODE (NFPA 736), NATIONAL ELECTRICAL SAFETY CODE (NFPA 737), NATIONAL ELECTRICAL SAFETY CODE (NFPA 738), NATIONAL ELECTRICAL SAFETY CODE (NFPA 739), NATIONAL ELECTRICAL SAFETY CODE (NFPA 740), NATIONAL ELECTRICAL SAFETY CODE (NFPA 741), NATIONAL ELECTRICAL SAFETY CODE (NFPA 742), NATIONAL ELECTRICAL SAFETY CODE (NFPA 743), NATIONAL ELECTRICAL SAFETY CODE (NFPA 744), NATIONAL ELECTRICAL SAFETY CODE (NFPA 745), NATIONAL ELECTRICAL SAFETY CODE (NFPA 746), NATIONAL ELECTRICAL SAFETY CODE (NFPA 747), NATIONAL ELECTRICAL SAFETY CODE (NFPA 748), NATIONAL ELECTRICAL SAFETY CODE (NFPA 749), NATIONAL ELECTRICAL SAFETY CODE (NFPA 750), NATIONAL ELECTRICAL SAFETY CODE (NFPA 751), NATIONAL ELECTRICAL SAFETY CODE (NFPA 752), NATIONAL ELECTRICAL SAFETY CODE (NFPA 753), NATIONAL ELECTRICAL SAFETY CODE (NFPA 754), NATIONAL ELECTRICAL SAFETY CODE (NFPA 755), NATIONAL ELECTRICAL SAFETY CODE (NFPA 756), NATIONAL ELECTRICAL SAFETY CODE (NFPA 757), NATIONAL ELECTRICAL SAFETY CODE (NFPA 758), NATIONAL ELECTRICAL SAFETY CODE (NFPA 759), NATIONAL ELECTRICAL SAFETY CODE (NFPA 760), NATIONAL ELECTRICAL SAFETY CODE (NFPA 761), NATIONAL ELECTRICAL SAFETY CODE (NFPA 762), NATIONAL ELECTRICAL SAFETY CODE (NFPA 763), NATIONAL ELECTRICAL SAFETY CODE (NFPA 764), NATIONAL ELECTRICAL SAFETY CODE (NFPA 765), NATIONAL ELECTRICAL SAFETY CODE (NFPA 766), NATIONAL ELECTRICAL SAFETY CODE (NFPA 767), NATIONAL ELECTRICAL SAFETY CODE (NFPA 768), NATIONAL ELECTRICAL SAFETY CODE (NFPA 769), NATIONAL ELECTRICAL SAFETY CODE (NFPA 770), NATIONAL ELECTRICAL SAFETY CODE (NFPA 771), NATIONAL ELECTRICAL SAFETY CODE (NFPA 772), NATIONAL ELECTRICAL SAFETY CODE (NFPA 773), NATIONAL ELECTRICAL SAFETY CODE (NFPA 774), NATIONAL ELECTRICAL SAFETY CODE (NFPA 775), NATIONAL ELECTRICAL SAFETY CODE (NFPA 776), NATIONAL ELECTRICAL SAFETY CODE (NFPA 777), NATIONAL ELECTRICAL SAFETY CODE (NFPA 778), NATIONAL ELECTRICAL SAFETY CODE (NFPA 779), NATIONAL ELECTRICAL SAFETY CODE (NFPA 780), NATIONAL ELECTRICAL SAFETY CODE (NFPA 781), NATIONAL ELECTRICAL SAFETY CODE (NFPA 782), NATIONAL ELECTRICAL SAFETY CODE (NFPA 783), NATIONAL ELECTRICAL SAFETY CODE (NFPA 784), NATIONAL ELECTRICAL SAFETY CODE (NFPA 785), NATIONAL ELECTRICAL SAFETY CODE (NFPA 786), NATIONAL ELECTRICAL SAFETY CODE (NFPA 787), NATIONAL ELECTRICAL SAFETY CODE (NFPA 788), NATIONAL ELECTRICAL SAFETY CODE (NFPA 789), NATIONAL ELECTRICAL SAFETY CODE (NFPA 790), NATIONAL ELECTRICAL SAFETY CODE (NFPA 791), NATIONAL ELECTRICAL SAFETY CODE (NFPA 792), NATIONAL ELECTRICAL SAFETY CODE (NFPA 793), NATIONAL ELECTRICAL SAFETY CODE (NFPA 794), NATIONAL ELECTRICAL SAFETY CODE (NFPA 795), NATIONAL ELECTRICAL SAFETY CODE (NFPA 796), NATIONAL ELECTRICAL SAFETY CODE (NFPA 797), NATIONAL ELECTRICAL SAFETY CODE (NFPA 798), NATIONAL ELECTRICAL SAFETY CODE (NFPA 799), NATIONAL ELECTRICAL SAFETY CODE (NFPA 800), NATIONAL ELECTRICAL SAFETY CODE (NFPA 801), NATIONAL ELECTRICAL SAFETY CODE (NFPA 802), NATIONAL ELECTRICAL SAFETY CODE (NFPA 803), NATIONAL ELECTRICAL SAFETY CODE (NFPA 804), NATIONAL ELECTRICAL SAFETY CODE (NFPA 805), NATIONAL ELECTRICAL SAFETY CODE (NFPA 806), NATIONAL ELECTRICAL SAFETY CODE (NFPA 807), NATIONAL ELECTRICAL SAFETY CODE (NFPA 808), NATIONAL ELECTRICAL SAFETY CODE (NFPA 809), NATIONAL ELECTRICAL SAFETY CODE (NFPA 810), NATIONAL ELECTRICAL SAFETY CODE (NFPA 811), NATIONAL ELECTRICAL SAFETY CODE (NFPA 812), NATIONAL ELECTRICAL SAFETY CODE (NFPA 813), NATIONAL ELECTRICAL SAFETY CODE (NFPA 814), NATIONAL ELECTRICAL SAFETY CODE (NFPA 815), NATIONAL ELECTRICAL SAFETY CODE (NFPA 816), NATIONAL ELECTRICAL SAFETY CODE (NFPA 817), NATIONAL ELECTRICAL SAFETY CODE (NFPA 818), NATIONAL ELECTRICAL SAFETY CODE (NFPA 819), NATIONAL ELECTRICAL SAFETY CODE (NFPA 820), NATIONAL ELECTRICAL SAFETY CODE (NFPA 821), NATIONAL ELECTRICAL SAFETY CODE (NFPA 822), NATIONAL ELECTRICAL SAFETY CODE (NFPA 823), NATIONAL ELECTRICAL SAFETY CODE (NFPA 824), NATIONAL ELECTRICAL SAFETY CODE (NFPA 825), NATIONAL ELECTRICAL SAFETY CODE (NFPA 826), NATIONAL ELECTRICAL SAFETY CODE (NFPA 827), NATIONAL ELECTRICAL SAFETY CODE (NFPA 828), NATIONAL ELECTRICAL SAFETY CODE (NFPA 829), NATIONAL ELECTRICAL SAFETY CODE (NFPA 830), NATIONAL ELECTRICAL SAFETY CODE (NFPA 831), NATIONAL ELECTRICAL SAFETY CODE (NFPA 832), NATIONAL ELECTRICAL SAFETY CODE (NFPA 833), NATIONAL ELECTRICAL SAFETY CODE (NFPA 834), NATIONAL ELECTRICAL SAFETY CODE (NFPA 835), NATIONAL ELECTRICAL SAFETY CODE (NFPA 836), NATIONAL ELECTRICAL SAFETY CODE (NFPA 837), NATIONAL ELECTRICAL SAFETY CODE (NFPA 838), NATIONAL ELECTRICAL SAFETY CODE (NFPA 839), NATIONAL ELECTRICAL SAFETY CODE (NFPA 840), NATIONAL ELECTRICAL SAFETY CODE (NFPA 841), NATIONAL ELECTRICAL SAFETY CODE (NFPA 842), NATIONAL ELECTRICAL SAFETY CODE (NFPA 843), NATIONAL ELECTRICAL SAFETY CODE (NFPA 844), NATIONAL ELECTRICAL SAFETY CODE (NFPA 845), NATIONAL ELECTRICAL SAFETY CODE (NFPA 846), NATIONAL ELECTRICAL SAFETY CODE (NFPA 847), NATIONAL ELECTRICAL SAFETY CODE (NFPA 848), NATIONAL ELECTRICAL SAFETY CODE (NFPA 849), NATIONAL ELECTRICAL SAFETY CODE (NFPA 850), NATIONAL ELECTRICAL SAFETY CODE (NFPA 851), NATIONAL ELECTRICAL SAFETY CODE (NFPA 852), NATIONAL ELECTRICAL SAFETY CODE (NFPA 853), NATIONAL ELECTRICAL SAFETY CODE (NFPA 854), NATIONAL ELECTRICAL SAFETY CODE (NFPA 855), NATIONAL ELECTRICAL SAFETY CODE (NFPA 856), NATIONAL ELECTRICAL SAFETY CODE (NFPA 857), NATIONAL ELECTRICAL SAFETY CODE (NFPA 858), NATIONAL ELECTRICAL SAFETY CODE (NFPA 859), NATIONAL ELECTRICAL SAFETY CODE (NFPA 860), NATIONAL ELECTRICAL SAFETY CODE (NFPA 861), NATIONAL ELECTRICAL SAFETY CODE (NFPA 862), NATIONAL ELECTRICAL SAFETY CODE (NFPA 863), NATIONAL ELECTRICAL SAFETY CODE (NFPA 864), NATIONAL ELECTRICAL SAFETY CODE (NFPA 865), NATIONAL ELECTRICAL SAFETY CODE (NFPA 866), NATIONAL ELECTRICAL SAFETY CODE (NFPA 867), NATIONAL ELECTRICAL SAFETY CODE (NFPA 868), NATIONAL ELECTRICAL SAFETY CODE (NFPA 869), NATIONAL ELECTRICAL SAFETY CODE (NFPA 870), NATIONAL ELECTRICAL SAFETY CODE (NFPA 871), NATIONAL ELECTRICAL SAFETY CODE (NFPA 872), NATIONAL ELECTRICAL SAFETY CODE (NFPA 873), NATIONAL ELECTRICAL SAFETY CODE (NFPA 874), NATIONAL ELECTRICAL SAFETY CODE (NFPA 875), NATIONAL ELECTRICAL SAFETY CODE (NFPA 876), NATIONAL ELECTRICAL SAFETY CODE (NFPA 877), NATIONAL ELECTRICAL SAFETY CODE (NFPA 878), NATIONAL ELECTRICAL SAFETY CODE (NFPA 879), NATIONAL ELECTRICAL SAFETY CODE (NFPA 880), NATIONAL ELECTRICAL SAFETY CODE (NFPA 881), NATIONAL ELECTRICAL SAFETY CODE (NFPA 882), NATIONAL ELECTRICAL SAFETY CODE (NFPA 883), NATIONAL ELECTRICAL SAFETY CODE (NFPA 884), NATIONAL ELECTRICAL SAFETY CODE (NFPA 885), NATIONAL ELECTRICAL SAFETY CODE (NFPA 886), NATIONAL ELECTRICAL SAFETY CODE (NFPA 887), NATIONAL ELECTRICAL SAFETY CODE (NFPA 888), NATIONAL ELECTRICAL SAFETY CODE (NFPA 889), NATIONAL ELECTRICAL SAFETY CODE (NFPA 890), NATIONAL ELECTRICAL SAFETY CODE (NFPA 891), NATIONAL ELECTRICAL SAFETY CODE (NFPA 892), NATIONAL ELECTRICAL SAFETY CODE (NFPA 893), NATIONAL ELECTRICAL SAFETY CODE (NFPA 894), NATIONAL ELECTRICAL SAFETY CODE (NFPA 895), NATIONAL ELECTRICAL SAFETY CODE (NFPA 896), NATIONAL ELECTRICAL SAFETY CODE (NFPA 897), NATIONAL ELECTRICAL SAFETY CODE (NFPA 898), NATIONAL ELECTRICAL SAFETY CODE (NFPA 899), NATIONAL ELECTRICAL SAFETY CODE (NFPA 900), NATIONAL ELECTRICAL SAFETY CODE (NFPA 901), NATIONAL ELECTRICAL SAFETY CODE (NFPA 902), NATIONAL ELECTRICAL SAFETY CODE (NFPA 903), NATIONAL ELECTRICAL SAFETY CODE (NFPA 904), NATIONAL ELECTRICAL SAFETY CODE (NFPA 905), NATIONAL ELECTRICAL SAFETY CODE (NFPA 906), NATIONAL ELECTRICAL SAFETY CODE (NFPA 907), NATIONAL ELECTRICAL SAFETY CODE (NFPA 908), NATIONAL ELECTRICAL SAFETY CODE (NFPA 909), NATIONAL ELECTRICAL SAFETY CODE (NFPA 910), NATIONAL ELECTRICAL SAFETY CODE (NFPA 911), NATIONAL ELECTRICAL SAFETY CODE (NFPA 912), NATIONAL ELECTRICAL SAFETY CODE (NFPA 913), NATIONAL ELECTRICAL SAFETY CODE (NFPA 914), NATIONAL ELECTRICAL SAFETY CODE (NFPA 915), NATIONAL ELECTRICAL SAFETY CODE (NFPA 916), NATIONAL ELECTRICAL SAFETY CODE (NFPA 917), NATIONAL ELECTRICAL SAFETY CODE (NFPA 918), NATIONAL ELECTRICAL SAFETY CODE (NFPA 919), NATIONAL ELECTRICAL SAFETY CODE (NFPA 920), NATIONAL ELECTRICAL SAFETY CODE (NFPA 921), NATIONAL ELECTRICAL SAFETY CODE (NFPA 922), NATIONAL ELECTRICAL SAFETY CODE (NFPA 923), NATIONAL ELECTRICAL SAFETY CODE (NFPA 924), NATIONAL ELECTRICAL SAFETY CODE (NFPA 925), NATIONAL ELECTRICAL SAFETY CODE (NFPA 926), NATIONAL ELECTRICAL SAFETY CODE (NFPA 927), NATIONAL ELECTRICAL SAFETY CODE (NFPA 928), NATIONAL ELECTRICAL SAFETY CODE (NFPA 929), NATIONAL ELECTRICAL SAFETY CODE (NFPA 930), NATIONAL ELECTRICAL SAFETY CODE (NFPA 931), NATIONAL ELECTRICAL SAFETY CODE (NFPA 932), NATIONAL ELECTRICAL SAFETY CODE (NFPA 933), NATIONAL ELECTRICAL SAFETY CODE (NFPA 934), NATIONAL ELECTRICAL SAFETY CODE (NFPA 935), NATIONAL ELECTRICAL SAFETY CODE (NFPA 936), NATIONAL ELECTRICAL SAFETY CODE (NFPA 937), NATIONAL ELECTRICAL SAFETY CODE (NFPA 938), NATIONAL ELECTRICAL SAFETY CODE (NFPA 939), NATIONAL ELECTRICAL SAFETY CODE (NFPA 940), NATIONAL ELECTRICAL SAFETY CODE (NFPA 941), NATIONAL ELECTRICAL SAFETY CODE (NFPA 942), NATIONAL ELECTRICAL SAFETY CODE (NFPA 943), NATIONAL ELECTRICAL SAFETY CODE (NFPA 944), NATIONAL ELECTRICAL SAFETY CODE (NFPA 945), NATIONAL ELECTRICAL SAFETY CODE (NFPA 946), NATIONAL ELECTRICAL SAFETY CODE (NFPA 947), NATIONAL ELECTRICAL SAFETY CODE (NFPA 948), NATIONAL ELECTRICAL SAFETY CODE (NFPA 949), NATIONAL ELECTRICAL SAFETY CODE (NFPA 950), NATIONAL ELECTRICAL SAFETY CODE (NFPA 951), NATIONAL ELECTRICAL SAFETY CODE (NFPA 952), NATIONAL ELECTRICAL SAFETY CODE (NFPA 953), NATIONAL ELECTRICAL SAFETY CODE (NFPA 954), NATIONAL ELECTRICAL SAFETY CODE (NFPA 955), NATIONAL ELECTRICAL SAFETY CODE (NFPA 956), NATIONAL ELECTRICAL SAFETY CODE (NFPA 957), NATIONAL ELECTRICAL SAFETY CODE (NFPA 958), NATIONAL ELECTRICAL SAFETY CODE (NFPA 959), NATIONAL ELECTRICAL SAFETY CODE (NFPA 960), NATIONAL ELECTRICAL SAFETY CODE (NFPA 961), NATIONAL ELECTRICAL SAFETY CODE (NFPA 962), NATIONAL ELECTRICAL SAFETY CODE (NFPA 963), NATIONAL ELECTRICAL SAFETY CODE (NFPA 964), NATIONAL ELECTRICAL SAFETY CODE (NFPA 965), NATIONAL ELECTRICAL SAFETY CODE (NFPA 966), NATIONAL ELECTRICAL SAFETY CODE (NFPA 967), NATIONAL ELECTRICAL SAFETY CODE (NFPA 968), NATIONAL ELECTRICAL SAFETY CODE (NFPA 969), NATIONAL ELECTRICAL SAFETY CODE (NFPA 970), NATIONAL ELECTRICAL SAFETY CODE (NFPA 971), NATIONAL ELECTRICAL SAFETY CODE (NFPA 972), NATIONAL ELECTRICAL SAFETY CODE (NFPA 973), NATIONAL ELECTRICAL SAFETY CODE (NFPA 974), NATIONAL ELECTRICAL SAFETY CODE (NFPA 975), NATIONAL ELECTRICAL SAFETY CODE (NFPA 976), NATIONAL ELECTRICAL SAFETY CODE (NFPA 977), NATIONAL ELECTRICAL SAFETY CODE (NFPA 978), NATIONAL ELECTRICAL SAFETY CODE (NFPA 979), NATIONAL ELECTRICAL SAFETY CODE (NFPA 980), NATIONAL ELECTRICAL SAFETY CODE (NFPA 981), NATIONAL ELECTRICAL SAFETY CODE (NFPA 982), NATIONAL ELECTRICAL SAFETY CODE (NFPA 983), NATIONAL ELECTRICAL SAFETY CODE (NFPA 984), NATIONAL ELECTRICAL SAFETY CODE (NFPA 985), NATIONAL ELECTRICAL SAFETY CODE (NFPA 986), NATIONAL ELECTRICAL SAFETY CODE (NFPA 987), NATIONAL ELECTRICAL SAFETY CODE (NFPA 988), NATIONAL ELECTRICAL SAFETY CODE (NFPA 989), NATIONAL ELECTRICAL SAFETY CODE (NFPA 990), NATIONAL ELECTRICAL SAFETY CODE (NFPA 991), NATIONAL ELECTRICAL SAFETY CODE (NFPA 992), NATIONAL ELECTRICAL SAFETY CODE (NFPA 993), NATIONAL ELECTRICAL SAFETY CODE (NFPA 994), NATIONAL ELECTRICAL SAFETY CODE (NFPA 995), NATIONAL ELECTRICAL SAFETY CODE (NFPA 996), NATIONAL ELECTRICAL SAFETY CODE (NFPA 997), NATIONAL ELECTRICAL SAFETY CODE (NFPA 998), NATIONAL ELECTRICAL SAFETY CODE (NFPA 999), NATIONAL ELECTRICAL SAFETY CODE (NFPA 1000).



EXISTING RISER DIAGRAM
SCALE: N.T.S.



NEW RISER DIAGRAM
SCALE: N.T.S.

PANEL SCHEDULE										
PANEL: PP1		LOCATION: PRESS BOX		FEEDER SOURCE: EXISTING PANEL		VOLTAGE: 240/120, 1Ø, 3 WIRE, WITH 100A MAIN BREAKER				
						ENCLOSURE: FLUSH MOUNTED I/V EQUIPMENT GND BAR SQ D TYPE GO LOAD CENTER				
CKT NO	THHN WIRE SIZE	LOAD DESCRIPTION	BREAKER	LOAD (VA)	AØ		BØ		CKT NO	
					AMP	POLE	AMP	POLE		
1	12	RECEPTACLE, ROOM 1	20	1	180				2	
3	12	RECEPTACLE, ROOM 1	20	1	180				4	
5	12	RECEPTACLE, ROOM 1	20	1	180				6	
7	12	RECEPTACLE, ROOM 3	20	1	180				8	
9	12	RECEPTACLE, ROOM 3	20	1	180				10	
11	12	RECEPTACLE, ROOM 3	20	1	180				12	
13	12	LIGHTING	20	1	300				14	
15	12	RECEPTACLES, REAR WALL	20	1	720				16	
17	10	A/C ROOM 1	30	2	1750				18	
19					1750				20	
21	10	A/C ROOM 3	30	2	1750				22	
23					1750				24	
25		SPACE			360	1	20	QUAD RECEPTACLE, ROOM 1	26	
27		SPACE			360	1	20	QUAD RECEPTACLE, ROOM 1	28	
29		SPACE			360	1	20	QUAD RECEPTACLE, ROOM 1	30	
31		SPACE				1	20	SPACE	32	
SOLID NEUTRAL NEUTRAL WIRE (N)					TOTAL CONNECTED LOAD (VA) = 18,260					
					AØ = 9,100		BØ = 9,160		GROUND BUS GROUND WIRE (G)	

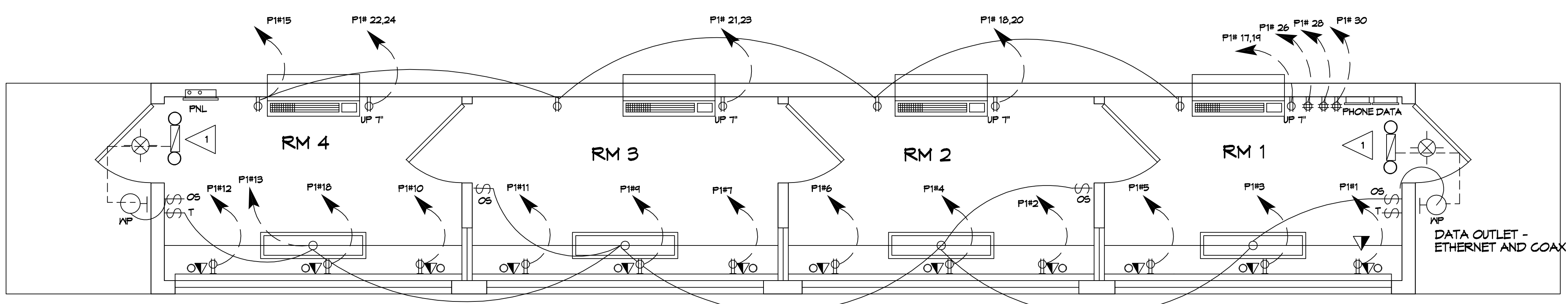
ELECTRICAL LEGEND

- SATCO #62-1054 45W/LED/1x4/FLUSH/3K/MH 45 WATT, 3000K LED, 1x4\"/>
- LITHONIA #ECRG-HO-RD-M6 EMERGENCY COMBINATION EXIT/FLOOD LIGHT I/V MIN. 90 MINUTE BATTERY BACK-UP (WALL MOUNT)
- LITHONIA #ERE-SGL-WP REMOTE EMERGENCY LIGHT HEAD (GRAY)
- SATCO #59013 4\"/>
- INTERMATIC #E1500 PROGRAMMABLE ASTRONOMICAL TIMER SWITCH (LIGHT ALMOND)
- LUTRON #MSOP55MLA, (1) POLE OCCUPANCY SENSOR SWITCH I/V MANUAL OVERRIDE - WALL MOUNTED
- ELECTRICAL DISTRIBUTION LOAD CENTER I/V MAIN DISCONNECT - 120/240V, SINGLE Ø, 100 AMP CAPACITY, SQ. D\"/>
- #5400 SERIES CONTINUOUS ELECTRIC WIRE MOLD (IVORY) I/V RECEPTS AND COMMUNICATION JACK COVERS 48\"/>
- 2 1/2\"/>
- ROOF ELECTRICAL ACCESS - 2\"/>
- PASS & SEYMOUR #3232-LA 20A 125V SPEC. GRADE, GROUNDING TYPE, RECEPTACLE (LIGHT ALMOND) 18\"/>
- PASS & SEYMOUR 420-M : QUAD RECEPTACLE 20A 125V, SPEC. GRADE, GROUNDING TYPE, RECEPTACLE, MID WALL HEIGHT.

NOTE: NAMING A CERTAIN BRAND, MAKE OR MANUFACTURER IS TO DESIGNATE THE GENERAL STYLE, TYPE, CHARACTER AND QUALITY STANDARD OF THE PRODUCT DESIRED.

- ### GENERAL POWER NOTES
- ALL WORK SHALL CONFORM TO THE LATEST EDITION OF THE NATIONAL ELECTRICAL CODE, THE GOVERNING ELECTRICAL CODE AND ALL OTHER JURISDICTIONAL DEPARTMENT REGULATIONS. CERTAIN CERTIFICATES OR APPROVAL WHERE REQUIRED. ELECTRICAL CONTRACTOR SHALL VERIFY ALL WIRE AND CONDUIT SIZES FOR MECHANICAL EQUIPMENT TO BE INSTALLED.
 - ALL MATERIALS FURNISHED SHALL BE NEW AND SHALL BE U.L. LISTED.
 - THE DRAWINGS INDICATE SIZE AND GENERAL LOCATION OF WORK. SCALE DIMENSIONS SHALL NOT BE USED. THE EXACT LOCATION OF ALL LIGHTING FIXTURES, RECEPTACLES AND TELEPHONE OUTLETS, ETC. SHALL BE DETERMINED BY ACTUAL CONDITIONS ON THE FIELD.
 - PRIOR TO BIDDING, CONTRACTOR SHALL VISIT THE JOB SITE AND FAMILIARIZE THEMSELVES WITH THE EXISTING CONDITIONS.
 - ELECTRICAL CONTRACTOR SHALL COORDINATE HIS WORK WITH OTHER TRADES AND WITH OTHER CONTRACTORS WHOSE WORK MAY AFFECT THIS INSTALLATION.
 - ELECTRICAL CONTRACTOR SHALL COORDINATE INCOMING ELECTRICAL SERVICE WITH UTILITY COMPANY AND INCLUDE IN HIS BID ALL CHARGES AND FEES INCURRED IN MODIFICATIONS.
 - ELECTRICAL CONTRACTOR SHALL COORDINATE THE TELEPHONE INSTALLATION WITH THE TELEPHONE COMPANY AND THE GENERAL CONTRACTOR.
 - ELECTRICAL CONTRACTOR, BEFORE INSTALLING ANY OF THE WORK, SHALL SEE THAT IT DOES NOT INTERFERE WITH CLEARANCES REQUIRED FOR FINISHED COLUMNS, HUNG CEILING, PLASTER, PARTITIONS, WALLS, ETC. AS SHOWN IN THE ARCHITECTURAL DRAWINGS AND DETAILS. IF ANY WORK IS INSTALLED AND IT LATER DEVELOPS THAT SUCH DETAILS OR DESIGN CANNOT BE FOLLOWED, THE CONTRACTOR, AT HIS OWN EXPENSE, SHALL MAKE SUCH CHANGES IN THE WORK AS DIRECTED BY THE ARCHITECT, AS WELL AS TO PERMIT THE INSTALLATION OF THE ARCHITECTURAL WORK AS SHOWN ON THE PLANS AND DETAILS.
 - PERFORM TEST REQUIRED BY THE OWNER OR THE ENGINEER IN CONNECTION WITH THE OPERATION OF THE ELECTRICAL SYSTEM IN THE BUILDING. ALL TESTS SHALL BE MADE IN ACCORDANCE WITH THE LATEST STANDARD OF THE IEEE AND THE NATIONAL ELECTRICAL CODE.
 - MINIMUM CONDUCTOR SIZE SHALL BE #12, 600V INSULATION. MINIMUM SIZE CONDUIT SHALL BE 3/4\"/>
 - CONTRACTOR SHALL INSTALL CIRCUIT BREAKERS AND OTHER CIRCUIT COMPONENTS TO MATCH EQUIPMENT ACTUALLY INSTALLED.
 - ALL 120V RUNS LONGER THAN 60 FEET SHALL BE #10 AWG AND 277V RUNS LONGER THAN 150 FEET SHALL BE #10 AWG UNLESS NOTED OTHERWISE.
 - INSTALL GROUND FAULT RECEPTACLES AT RECEPTACLE LOCATIONS WITHIN 5' OF SINKS OR LAVATORIES, AND AT EXTERIOR LOCATIONS. EXTERIOR RECEPTACLES SHALL ALSO BE WATERPROOF. ALL RECEPTACLES IN THE KITCHEN AREA SHALL HAVE GROUND FAULT PROTECTION.
 - BONDING AND GROUNDINGS SHALL BE IN ACCORDANCE WITH NFPA 70:250-69, NFPA 250-29, 250-71 & 250-72.
 - GROUND NEUTRAL IN ACCORDANCE WITH NFPA 70:250-230.
 - FUSES SHALL BE ITC CLASS K5, 250 VOLT, 200,000 AMP INTERRUPTING CAP.
 - PROVIDE SERVICES OF A FIRE/SMOKE DETECTION AND ALARM COMPANY TO DESIGN AND INSTALL ALARM SYSTEM TO MEET REQUIREMENTS OF THE STATE FIRE MARSHALL AND THE FIRE DISTRICT.
 - EXTERIOR LIGHTING SHALL BE SHADED OR INWARDLY DIRECTED IN SUCH A MANNER SO THAT NO DIRECT LIGHTING OR GLARE IS CAST BEYOND THE PROPERTY LINE. THE INTENSITY OF SUCH LIGHTING SHALL NOT EXCEED ONE FOOT CANDLE AS MEASURED AT THE ADJUTING PROPERTY LINE.
 - ALL ELECTRICAL, MECHANICAL AND PLUMBING PENETRATING FIRE PARTITIONS SHALL BE FIRE CAULKED. (PENETRATIONS THROUGH RATED CONSTRUCTION SHALL BE SEALED WITH A MATERIAL CAPABLE OF PREVENTING THE PASSAGE OF FLAMES AND HOT GASES WHEN TESTED IN ACCORDANCE WITH ASTM-E814.)
 - VERIFY ELECTRICAL CONNECTIONS PER MANUFACTURER'S RECOMMENDATIONS.
 - ALL BRANCH CIRCUITS SERVING PATIENT CARE AREAS SHALL PROVIDE AN EFFECTIVE GROUND-FAULT CURRENT PATH BY INSTALLATION IN A METAL RACENAY SYSTEM OR A MEDICAL GRADE MC CABLE (NEC ART. 517.13(A) & (B)).

- ### GENERAL LIGHTING NOTES
- ALL WORK SHALL COMPLY WITH APPLICABLE NATIONAL, STATE, AND LOCAL CODES, RULES, REGULATIONS, AND REQUIREMENTS OF THE SERVICE UTILITY COMPANY.
 - GENERAL CONTRACTOR SHALL NOTIFY THE ARCHITECT IMMEDIATELY IF ANY CONFLICTS OCCUR BETWEEN LIGHTING AND ANY OTHER TRADE. DO NOT PROCEED WITH INSTALLATION IN THAT AREA UNTIL CONFLICT HAS BEEN RESOLVED TO THE SATISFACTION OF THE ARCHITECT AND ENGINEER.
 - REFER TO ARCHITECTURAL DRAWINGS FOR EXACT LOCATION AND MOUNTING INSTRUCTIONS FOR ALL LIGHT FIXTURES. NOTIFY THE ARCHITECT AND ENGINEER OF ANY DISCREPANCIES BETWEEN THESE PLANS AND THE ARCHITECTURAL PLANS RELATING TO QUANTITY, TYPE AND LOCATION OF DEVICES AND/OR FIXTURES.
 - WHEN SPECIFIC LIGHT FIXTURE HAS BEEN SPECIFIED IN THE FIXTURE SCHEDULE ELECTRICAL CONTRACTOR SHALL PROVIDE COMPLETE ASSEMBLY INCLUSIVE ALL PARTS AND HARDWARE TO INSURE PROPER FUNCTIONING FIXTURE.
 - ALL CONDUCTORS SHALL BE A MINIMUM OF #12 AWG UNLESS NOTED OTHERWISE.
 - ALL 120V RUNS LONGER THAN 60 FEET SHALL BE #10 AWG AND 277V RUNS LONGER THAN 150 FEET SHALL BE #10 AWG UNLESS NOTED OTHERWISE.
 - ALL CONDUCTORS SHALL BE COPPER.
 - WHERE CONDUCTOR SIZES ARE NOTED ON DRAWINGS, THAT WIRE SIZE SHALL BE THROUGH THE ENTIRE RUN UNLESS OTHERWISE NOTED.
 - MOUNTED LIGHT SWITCHES 48\"/>
 - WHERE MORE THAN ONE SWITCH OCCURS IN THE SAME LOCATION, THEY SHALL BE INSTALLED IN A GANG TYPE BOX UNDER ONE COVER PLATE. ALL GANGED SWITCHES SHALL HAVE A COMMON SEAMLESS FACEPLATE. EACH MULTI-GANGED BOX SHALL BE NO MORE THAN SIX (6) SWITCHES WIDE. WHERE MORE THAN SIX (6) SWITCHES ARE SHOWN AT ONE (1) LOCATION, ADDITIONAL MULTI-GANGED BOXES SHALL BE STACKED VERTICALLY AND THE WIDTH OF THE MULTI-GANGS SHALL BE AS EVEN AS POSSIBLE.
 - EACH DIMMER SWITCH SHALL HAVE A WATTAGE RATING 25% HIGHER THAN THE TOTAL WATTAGE OF ALL LIGHTS TO BE CONTROLLED BY THE DIMMER. DIMMER SIZES 600, 1000, 1500, AND 2000 WATTS. LUTRON NOVA T-STAR. WHERE SWITCHES ARE GANGED WITH DIMMERS, THE SWITCHES SHALL ALSO BE LUTRON NOVA T-STAR. FLUORESCENT AND LOW VOLTAGE DIMMERS SHALL BE LUTRON NOVA T-STAR.
 - ALL EMERGENCY EXIT LIGHT FIXTURES SHALL HAVE 90 MINUTE BATTERY BACKUP WITH INTEGRAL TEST BUTTON AND SHALL BURN CONTINUOUSLY.
 - ALL FLUORESCENT FIXTURES THAT UTILIZE DOUBLE-ENDED LAMPS AND CONTAIN BALLASTS SHALL BE PROVIDED WITH A DISCONNECTING MEANS IN ACCORDANCE WITH NEC 410.75B.



17 LIGHTING AND POWER PLAN
SCALE: 3/8\"/>

- ### RISER DIAGRAM NOTES
- EXISTING UNDERGROUND FEEDER TO REMAIN.
 - EXISTING 240/120V, 125A, 1Ø, 3 WIRE PANEL. TO REMAIN. DISCONNECT AND REMOVE ALL WIRING TO EXISTING PRESS BOX. INSTALL NEW 100A, 2 POLE CIRCUIT BREAKER IN SPACE #12/14.
 - PROVIDE TEMPORARY SUPPORT FOR PANEL AND JUNCTION BOX DURING CONSTRUCTION.
 - NEW 240/120V, 100A, 1Ø, 3 WIRE PANEL WITH MAIN BREAKER, IN PRESS BOX.
 - EXISTING GROUND RODS AND GROUND WIRE IN PVC PIPE. RE CONNECT.

- ### KEYED NOTES
- PROVIDE CONNECTION TO UN-SWITCHED HOT OF LIGHTING CIRCUIT AND SHALL HAVE 90 MINUTE EMERGENCY BATTERY BACKUP.

DAMMON ENGINEERING, INC.

LOUISIANA & MISSISSIPPI
 Chief Engineer: Brian M. Misch, P.E.
 554 Old Spanish Trail
 Slidell, LA 70598
 www.dammonengineering.com
 info@dammonengineering.com
 PH: 985.649.5832

REVISIONS	DATE	DESCRIPTION

SEAL:

NEW PRESS BOX LIGHTING PLAN
 JOB No: 2458
 DATE: 06-30-2022
 DRAWN BY: [Signature]
 CHECKED BY: [Signature]
 300 SPANISH DRIVE
 SLIDELL, LA. 70598

SHEET TITLE:
POWER AND LIGHTING PLAN

DRAWING NUMBER:
E101