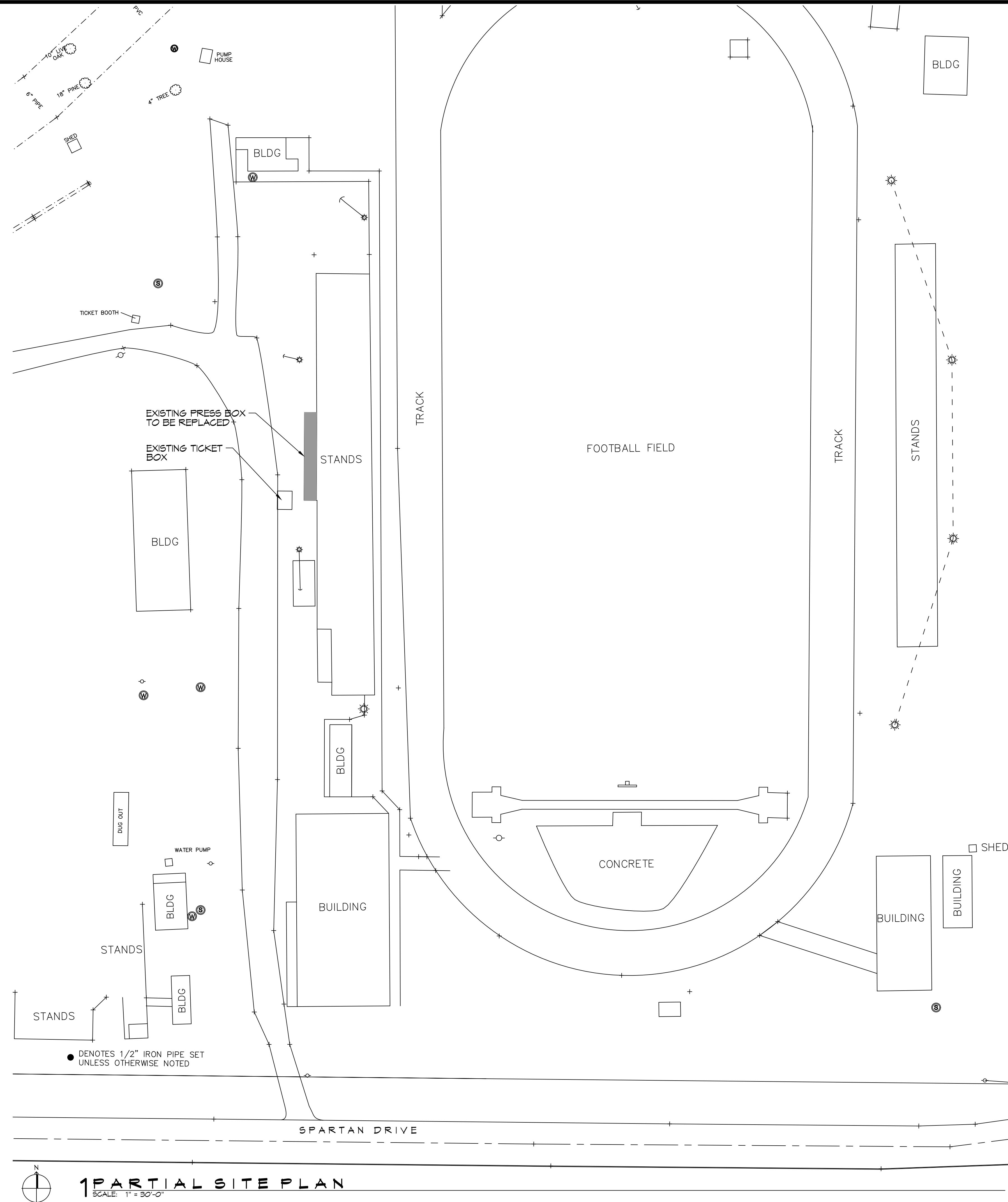


FILE NAME: J:\School Plans\NET DAMMON PRESS BOX SCHOOL LOUISIANA HIGH School Plans\Net\Dammon\Partial Site Plan.dwg DATE: 04-14-2022 10:52:42 AM



1 PARTIAL SITE PLAN
SCALE: 1" = 30'-0"

DAMMON
ENGINEERING, INC.
LOUISIANA & MISSISSIPPI

Chief Engineer: Brian Watch, PE
554 Old Spanish Trail
Slidell, LA 70468

www.dammonengineering.com
info@dammonengineering.com
PH: 985.649.9832

#	DESCRIPTION	DATE
1		

SEAL:

NEW PRESS BOX
SALMON
SCHOOL

300 SPARTAN DRIVE
SLIDELL, LA 70468

JOB No: DATE: 04-14-2022
DRAWN BY: JMS
CHECKED BY: C&D

SHEET TITLE:
SITE PLAN

DRAWING NUMBER:
C101