

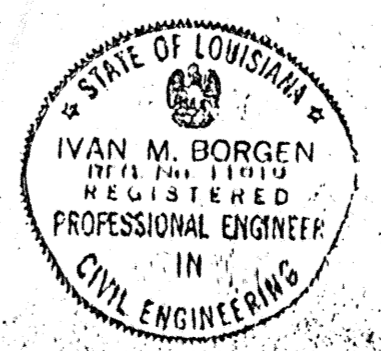
9.083 ACRES

206.1'
31.8'
BLEACHERS

73.4'
125.9'
BLEACHERS

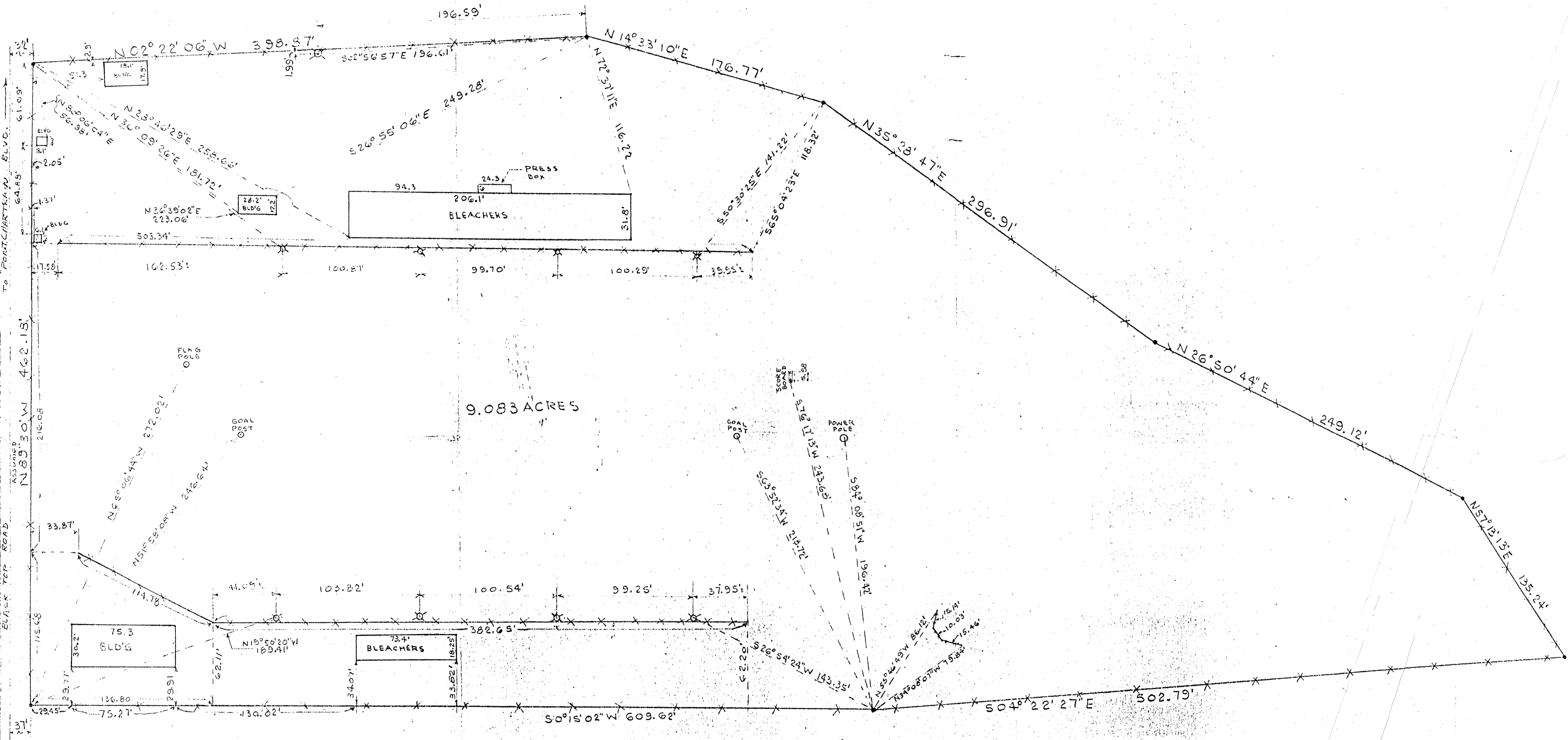
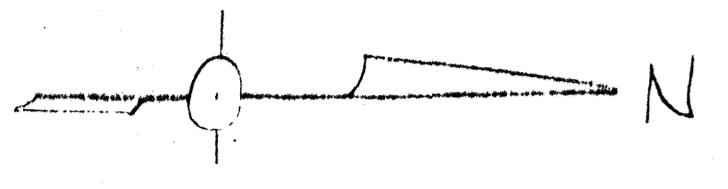
SYMBOLS
X - DENOTES LIGHT POLE

LAYOUT OF FOOTBALL FIELD
SALMEN HIGH SCHOOL LOCATED IN
SEC. 44 T9S R14E
IN
SLIDELL, ST. TAMMANY PARISH, LOUISIANA
FOR
ST. TAMMANY PARISH SCHOOL BOARD



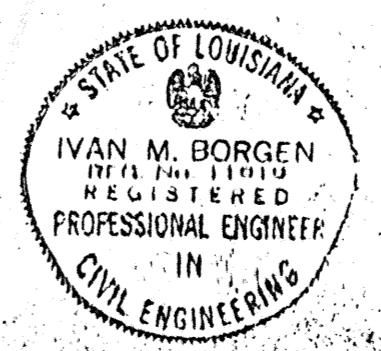
THIS SURVEY IS CERTIFIED
TRUE AND CORRECT BY
Ivan M. Borgen
IVAN M. BORGEN
REGISTERED
PROFESSIONAL ENGINEER
IN
LOUISIANA
NO. 686

| | | |
|--------------------------------------|-------------|----------------|
| SALMEN HIGH SCHOOL FOOTBALL FIELD | | |
| SCALE: 1" = 40' | APPROVED BY | DRAWN BY G. W. |
| DATE: 7-13-77 | | |
| BORGAN ENGINEERING | | |
| PLAT SURVEY | | |



SYMBOLS
 X - DENOTES LIGHT POLE

LAYOUT OF FOOTBALL FIELD
 SALMEN HIGH SCHOOL LOCATED IN
 SEC. 44 T9S R14E
 IN
 SLIDELL, ST. TAMMANY PARISH, LOUISIANA
 FOR
 ST. TAMMANY PARISH SCHOOL BOARD



THIS SURVEY IS CERTIFIED AND CORRECT BY
 IVAN M. BORGEN
 REGISTERED PROFESSIONAL ENGINEER
 IN
 CIVIL ENGINEERING
 NO. 686

| | | |
|--------------------------------------|--------------|-----------------|
| SALMEN HIGH SCHOOL FOOTBALL FIELD | | |
| SCALE: 1" = 40' | APPROVED BY: | DRAWN BY: G. W. |
| DATE: 7-13-77 | | |
| BORGAN ENGINEERING | | |
| PLAT SURVEY | | |