

SPLIT SYSTEM DX SCHEDULE - SIXTH WARD																				
TAG	AREA SERVED	Make	Model	Nominal Tonnage	Total CFM	OA CFM	External SP (F/WC)	FAN			COOLING			HEAT			REMARKS			
								QTY	HP	TMBH	SMBH	H	MERV-6	KW	STEPS	VAC		PH	Hz	MCA
AHU-1	Boys Locker Room	Carrier	FJ4DNX48L00	4	1420	340	0.3	1	1/3	60	41	MERV-6	9.6	1	208	3	60	30.9	17.8	1, 2, 3, 4
AHU-2	Girls Locker Room	Carrier	FJ4DNX48L00	4	1420	300	0.3	1	1/3	60	41	MERV-6	9.6	1	208	3	60	30.9	17.8	1, 2, 3, 4

- NOTES:
- Cooling capacities to be rated in accordance with AHRI standard 210/290 for ASHRAE standard design weather conditions in New Orleans, LA.
 - Install units in accordance with manufacturer's recommendations.
 - Provide controls per attached drawings and specifications.
 - Provide new filters after commissioning and final acceptance.

MINI-SPLIT SCHEDULE														
Tag	Make	Model	Cooling (MBH)	Heating (BTU/H)	Power (VAC/PH)	Remarks	HEAT PUMP			MCA	Remarks			
							Model	Make/Model	Power (VAC/PH)					
MS-1	Carrier	40MBCQ36-3	36	40	208/1		CU-3	Carrier	38MBCQ36AA3	208/1	30	1, 2, 4		
MS-2	Carrier	40MAHBQ18A3	24	12.6	208/1	1, 2, 3	CU-4	Carrier	38MARBQ24A3	208/1	25	1, 2, 3		

- NOTES:
- Install per Manufacturer's recommendations.
 - Provide new filters after commissioning and final acceptance.
 - Furnish with condensate pump removal kit and pan "Safe-T" float switch.
 - Provide concrete equipment pad for Heat Pump.

DIFFUSER SCHEDULE			
Mark No.	Service	Neck Size	Description
A	Supply Air	Ref. Plan	Krueger DPL Adjustable Drum Register with Opposed Blade Damper
B	Supply Air	Ref. Plan	Price 620D Double Deflection Register with Damper
C	Return Air	Ref. Plan	Price 630D Louver Return with Damper

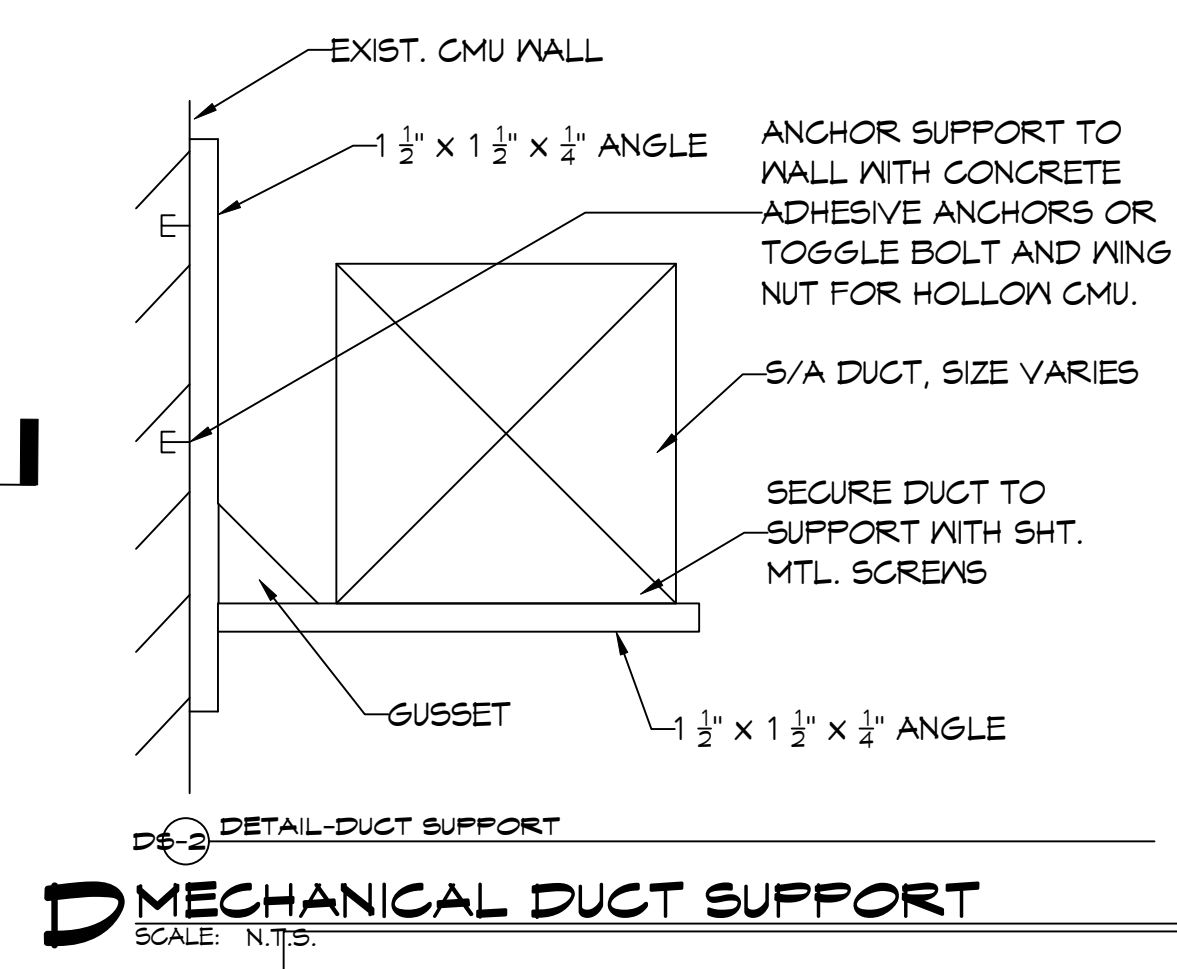
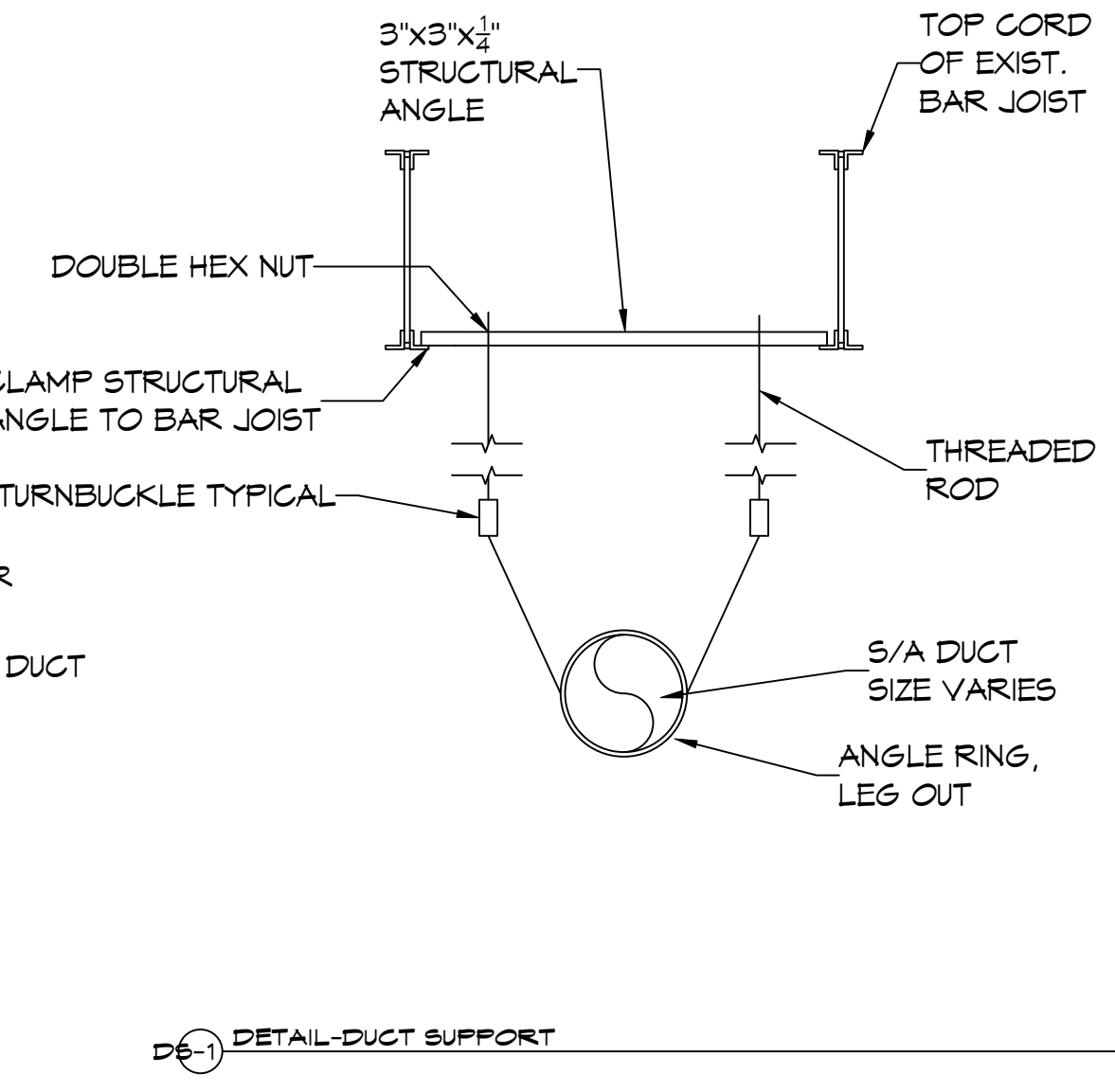
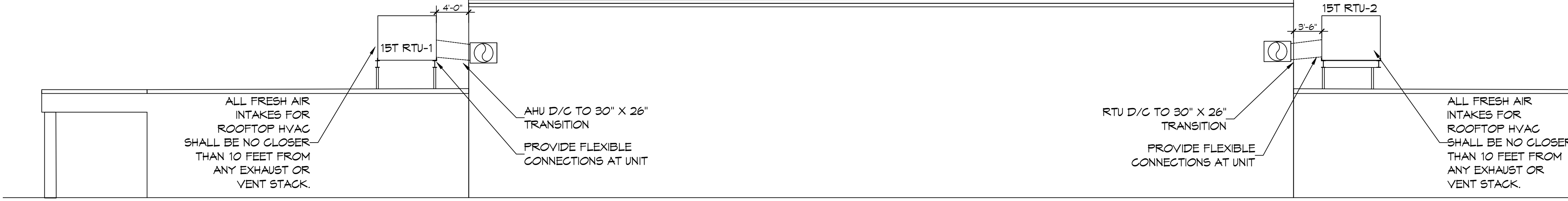
1. Coordinate with Architect / Owner for colors and finish.

PACKAGED A/C SCHEDULE - Boyet																					
TAG	AREA SERVED	Make/Model	Model / Size	Nominal Tonnage	Total CFM	OA CFM	External SP (F/WC)	FAN			COOLING			FILTERS			POWER	REMARKS			
								QTY	HP	TMBH	SMBH	H	EDB	EWB	MERV-8	MERV-8			MERV-8		
																				QTY	HP
RTU-1	Gym	Carrier	50FC-M16A3A5	15	6900	2680	0.6	2	3	200.7	125.9	83.5	71.1	MERV-8	MERV-8	MERV-8	208	3	60	72	1, 2, 3, 4
RTU-2	Gym	Carrier	50FC-M16A3A5	15	6900	2680	0.6	2	3	200.7	125.9	83.5	71.1	MERV-8	MERV-8	MERV-8	208	3	60	72	1, 2, 3, 4

- NOTES:
- Cooling capacities to be rated in accordance with AHRI standard 210/290 for ASHRAE standard design weather conditions in New Orleans, LA.
 - Install units in accordance with manufacturer's recommendations.
 - Provide controls per attached drawings and specifications.
 - Provide new filters after commissioning and final acceptance.

- ### THERMOSTAT NOTES
- ALL NEW RTU'S, AHU'S & MINI SPLITS SHALL HAVE NEW STAND ALONE DIGITAL THERMOSTAT WITH A LOCKABLE HOUSING AROUND THE THERMOSTAT. EACH THERMOSTAT SHALL HAVE AUTOMATIC CHANGE OVER COOL/HEAT.
 - FINAL LOCATION OF TEMPERATURE CONTROLS TO BE COORDINATED WITH OWNER AT JOB SITE.

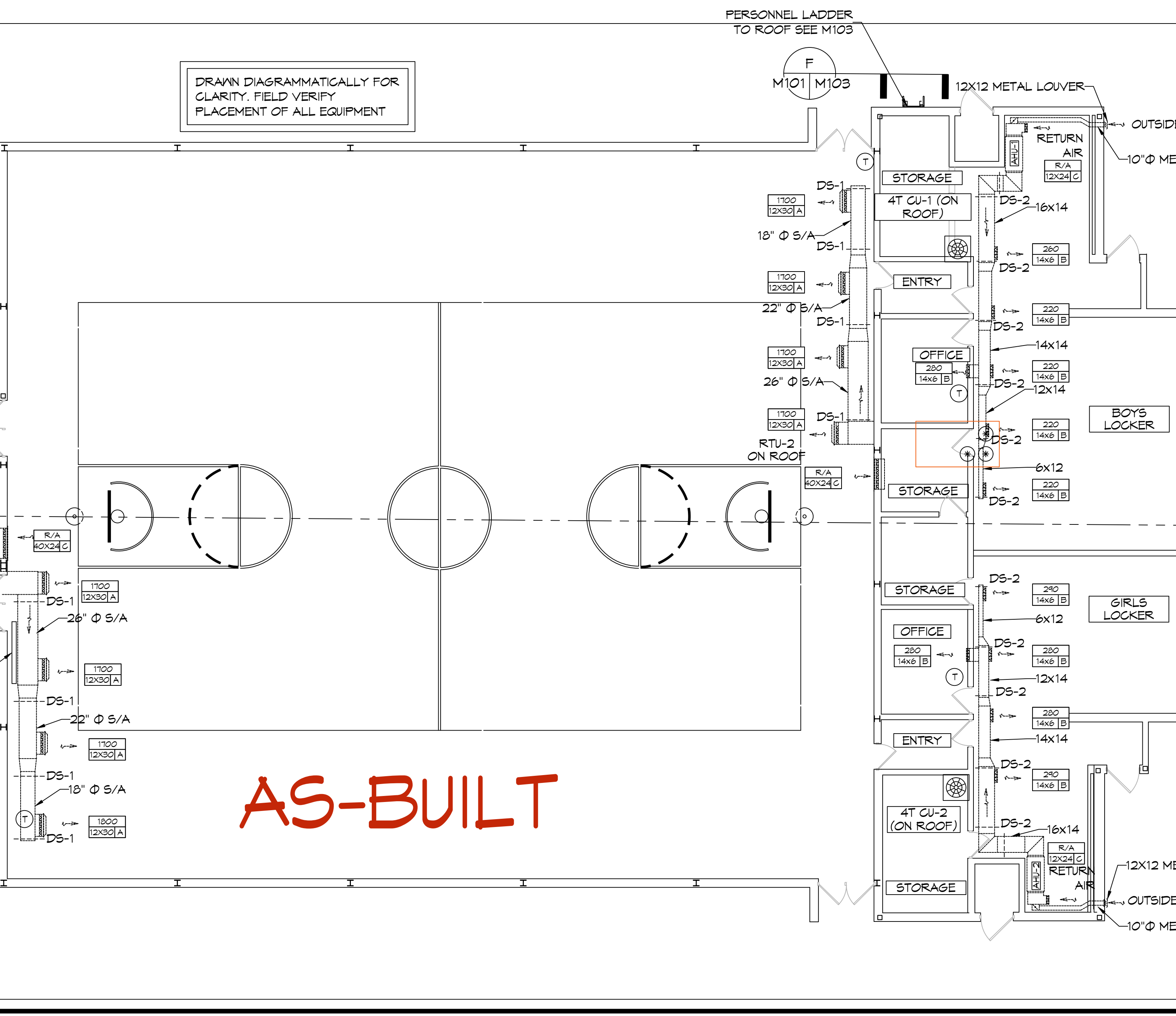
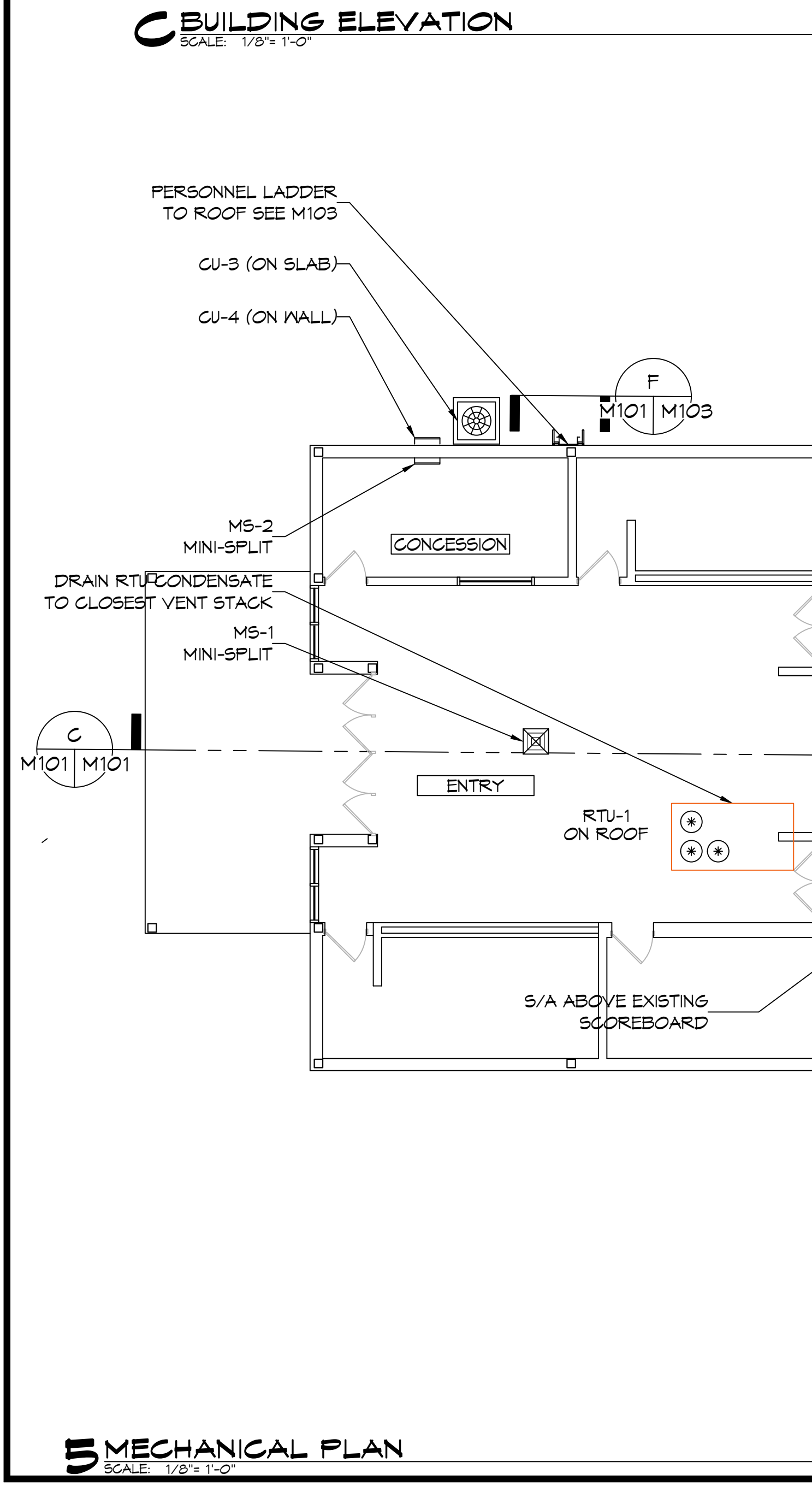
- ### GENERAL NOTES
- CONCEALED DUCTWORK TO BE GALVANIZED SHEET METAL WRAPPED WITH FIBROUS GLASS DUCT WRAP WITH FSK VAPOR BARRIER, MIN R-6. INSTALLED PER SMACNA STANDARDS. DUCT WORK IMMEDIATELY DOWNSTREAM FROM RTU SHALL BE LINED FOR SOUND ATTENUATION.
 - EXPOSED DUCTWORK TO BE GALVANIZED SHEET METAL LINED WITH FIBROUS GLASS DUCT WRAP, MIN R-6. INSTALLED PER SMACNA STANDARDS AND SPECIFICATIONS.
 - DUCT SIZES SHOWN ARE CLEAR INSIDE DIMENSIONS.
 - IN ALL SYSTEMS OVER 2000 CFM AND LESS THAN 15,000 CFM, SMOKE DETECTORS SHALL BE INSTALLED IN ACCORDANCE WITH NFPA 72E IN THE RETURN DUCT DOWNSTREAM OF THE AIR HANDLING UNIT AND ALL FILTERS TO AUTOMATICALLY STOP THE FAN.
 - CONDENSATE DRAINS TO BE PVC PIPE RUN TO PLUMBERS P-TRAP WITHIN FIVE FEET OF AIR HANDLING UNITS.
 - ALL AIR HANDLING SYSTEMS TO BE BALANCED TO ASSURE PROPER AIR FLOWS PER PLANS.
 - ALL SUPPLY AIR VENTS SHALL BE EQUIPPED WITH AIR CONTROL DAMPERS AT THE REGISTER.
 - REFRIGERANT LINES SHALL BE SIZED BY UNIT MANUFACTURER AND INSTALLED ACCORDING TO MANUFACTURER'S INSTRUCTIONS.
 - FRESH AIR SHALL BE SUPPLIED TO EACH AIR HANDLER THROUGH EXTERIOR WALL DUCT SUPPLIED WITH A CONTROL DAMPER.
 - ALL MECHANICAL SYMBOLS ARE DRAWN DIAGRAMMATICALLY. CONTRACTOR TO VERIFY WITH OWNER LOCATIONS OF VENTS, DAMPERS, REGISTERS, ETC.
 - FINAL LOCATION OF TEMPERATURE CONTROLS TO BE COORDINATED WITH OWNER AT JOB SITE.
 - PROVIDE AND INSTALL SMOKE DETECTORS AS APPROVED BY LOCAL AHJ'S. PLACE NEAR R/A AND S/A OPENINGS OF AHU AND PROVIDE, WITH ACCESS PANEL, WIRING BY ELECTRICAL CONTRACTOR.
 - PROVIDE BIRD SCREENS AT ALL EXTERIOR MECHANICAL PENETRATIONS.



MECHANICAL LEGEND

(T)	THERMOSTAT
D#	DUCT SUPPORT
—	SUPPLY DUCT
—	DAMPER CONTROL

CFM	SIZE	MK
ROUND FLEX DUCT, MAX. LENGTH 16'-0", MIN. R-6.	DUCT SIZE AS FOLLOWS:	
- 250 CFM TO 350 CFM = 9"		
- 200 CFM TO 250 CFM = 8"		
- 150 CFM TO 200 CFM = 7"		
- 100 CFM TO 150 CFM = 6"		



AS-BUILT

MECHANICAL PLAN
SCALE: 1/8" = 1'-0"

MECHANICAL DUCT SUPPORT
SCALE: N.T.S.

DAMMON ENGINEERING, INC.

LOUISIANA & MISSISSIPPI

Chief Engineer: Brian Mastich, PE
 554 Old Spanish Trail
 Slidell, LA 70458
 www.dammonengineering.com
 info@dammonengineering.com
 PH: 985.649.5832

REVISIONS	DATE
1	2/17/2024
2	2/17/2024

MECHANICAL RENOVATIONS

BOYET JUNIOR HIGH SCHOOL

52098 Saddle Dr.
 Slidell, LA 70461
 JOB No: 2468 DATE: 12-26-2023
 DRAWN BY: C-CD CHECKED BY:

SHEET TITLE: MECHANICAL PLAN

DRAWING NUMBER: **M101**

SHEET No: 6 of 9