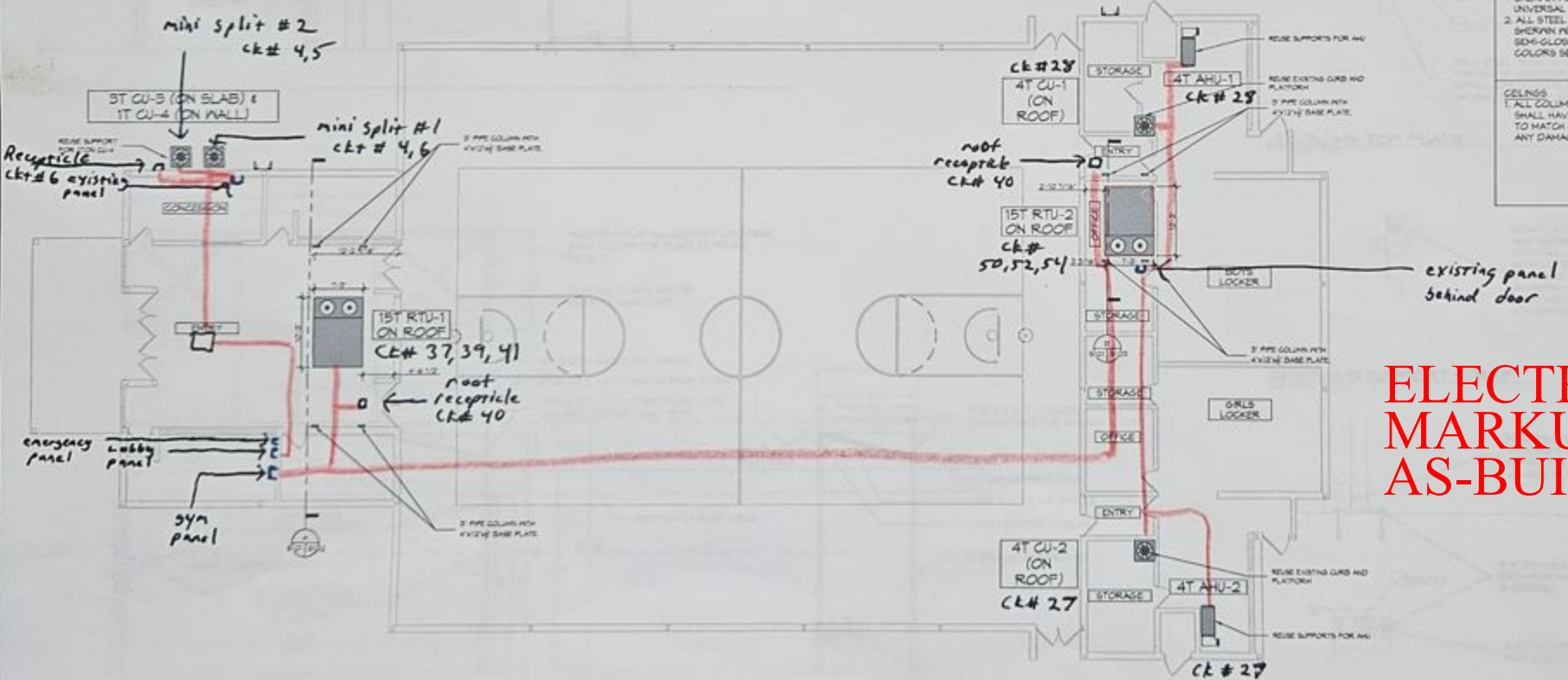


- METAL - STRUCTURAL STEEL**
A. DESIGN, FABRICATION, AND ERECTION ARE TO BE GOVERNED BY THE LATEST REVISIONS OF THE FOLLOWING UNLESS NOTED OTHERWISE (U.N.O.):
1. AISC SPECIFICATION FOR STRUCTURAL STEEL BUILDINGS (AISC 360-10).
2. AISC CODE OF STANDARD PRACTICE (CONTRACTOR SHALL SUBMIT STEEL SHOP DRAWINGS TO ENGINEER FOR REVIEW PRIOR TO CONSTRUCTION).
3. AISC SPECIFICATIONS FOR STRUCTURAL JOINTS USING ASTM A325 OR A440 BOLTS (ALLOWABLE STRESS DESIGN).
4. STRUCTURAL WELDING CODE, AWS D1.1 OF THE AMERICAN WELDING SOCIETY. WELDING PERSONNEL AND PROCEDURES ARE TO BE QUALIFIED PER AWS D1.1.
B. MATERIALS:
1. WIDE FLANGE AND IPE SHAPES SHALL BE ASTM A992, FY = 50 KSI, U.N.O.
2. ALL OTHER HOT-ROLLED SHAPES SHALL BE ASTM A992, FY = 36 KSI, U.N.O.
3. STEEL PIPES SHALL BE ASTM A53, TYPE-S (SEAMLESS) GRADE B, U.N.O.
4. HOLLOW STRUCTURAL SECTIONS (HSS) SHALL BE ASTM A500, GRADE B, U.N.O.
5. PLATES AND BARS SHALL BE ASTM A36, U.N.O.
C. BOLTS
1. ALL BOLTS SHALL BE ASTM A325 HIGH STRENGTH WITH HARDENED WASHERS AND HEAVY HEX NUTS U.N.O.
2. ALL BOLT HOLES SHALL BE 1/16" LARGER THAN THE BOLT DIAMETER U.N.O.
D. CONNECTIONS
1. ALL CONNECTIONS SHALL BE SHOP WELDED AND FIELD BOLTED U.N.O.
E. WELDS
1. ALL WELDS SHALL BE WITH E70XX ELECTRODES IN ACCORDANCE WITH AWS D1.1. USE HIGHER STRENGTH ELECTRODE IF REQUIRED BY AWS D1.1. ALL WELDING SHALL BE PERFORMED BY AWS QUALIFIED WELDERS.
2. MINIMUM SIZE OF FILET WELD SHALL BE 3/16" U.N.O.
3. SEAL WELD AROUND ALL WELDED CONNECTIONS WHERE WELDING IS NOT INDICATED TO PROVIDE WATER-TIGHT CONNECTION.
F. COATINGS
1. ALL STEEL SHALL BE SHOP PRIMED IN ACCORDANCE WITH THE STRUCTURAL STEEL FRAMING SPECIFICATION.
2. ALL EXPOSED STEEL SHALL BE PAINTED IN ACCORDANCE WITH THE SPECIFICATIONS.
3. AFTER ERECTION CONTRACTOR SHALL "TOUGH UP" WITH PAINT ALL ABRASION AREAS.
G. FIELD QUALITY CONTROL
1. INSPECTION OF FIELD ASSEMBLIES IN ACCORDANCE WITH AISC SPECIFICATION FOR STRUCTURAL JOINTS. INSPECTION SHALL INCLUDE APPROVAL OF PROCEDURE FOR CALIBRATION OF FRENCHES AND INSTALLATION OF BOLTS.
H. MISCELLANEOUS
1. SEAL ENDS OF OPEN MEMBERS SUCH AS PIPES AND TUBES WITH 1/8" INCH THICK PLATE & 1/8" INCH SEAL WELDS UNLESS SPECIFICALLY NOTED OTHERWISE.

- PAINT**
1. ALL STEEL SHALL RECEIVE ONE COAT SHERWIN WILLIAMS KEM KROMK UNIVERSAL METAL PRIMER OR EQUIVALENT.
2. ALL STEEL SHALL BE FINISH PAINTED WITH SHERWIN WILLIAMS PRONAR 200 ALKYD SEMI-GLOSS ENAMEL OR EQUIVALENT. COLORS SELECTED BY OWNER.
CEILING
1. ALL COLLINGS PENETRATING A CEILING SHALL HAVE ESCUTCHEON PLATE. PAINT TO MATCH COLOR OF CEILING. REPAIR ANY DAMAGES TO CEILING.

DATE	
REVISIONS	
DESCRIPTION	
SCALE	
	

- Boys locker room panel
Boys CU-1 ckt } 28 (front)
Boys AHU-1 ckt }
Girls CU-1 ckt } 27
Girls AHU-1 ckt }
gym panel
RTU 1 ckt 37,39,41
RTU 2 ckt 50,52,54
Heaters ckt 43,45,47
Heaters ckt 42,44,46
Heaters ckt 56,58,60
Lobby panel
Mini split #1 - ckt 4,6
Root receptacles - ckt 40
concession panel
Mini split #2 - ckt 4,5
receptacle - ckt 6



ELECTRICAL MARKUPS AS-BUILT