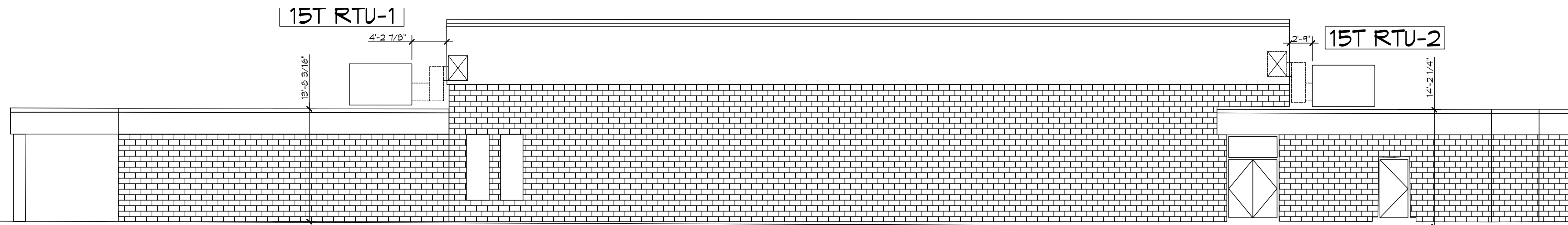


PACKAGED A/C SCHEDULE - BOYET JUNIOR HIGH GYM																							
ROOFTOP UNIT																							
TAG	AREA SERVED	Make/Model	Model / Size	Nominal Tonnage	Total CFM	OA CFM	External SP ("WC)	FAN				COOLING			FILTERS		HEAT		POWER			MCA	MOP
								QTY	HP	TMBH	SMB H	EDB	EWB	MERV-8	MERV-8	MERV-8	KW	STAGE	VAC	PH	Hz		
AHU-1	Gym	Trane	TSJ180_3	15	6900	2680	0.6	2	3	200.7	125.9	83.5	71.1	MERV-8	MERV-8	MERV-8	36	2	208	3	60	132	150
AHU-2	Gym	Trane	TSJ180_3	15	6900	2680	0.6	2	3	200.7	125.9	83.5	71.1	MERV-8	MERV-8	MERV-8	36	2	208	3	60	132	150

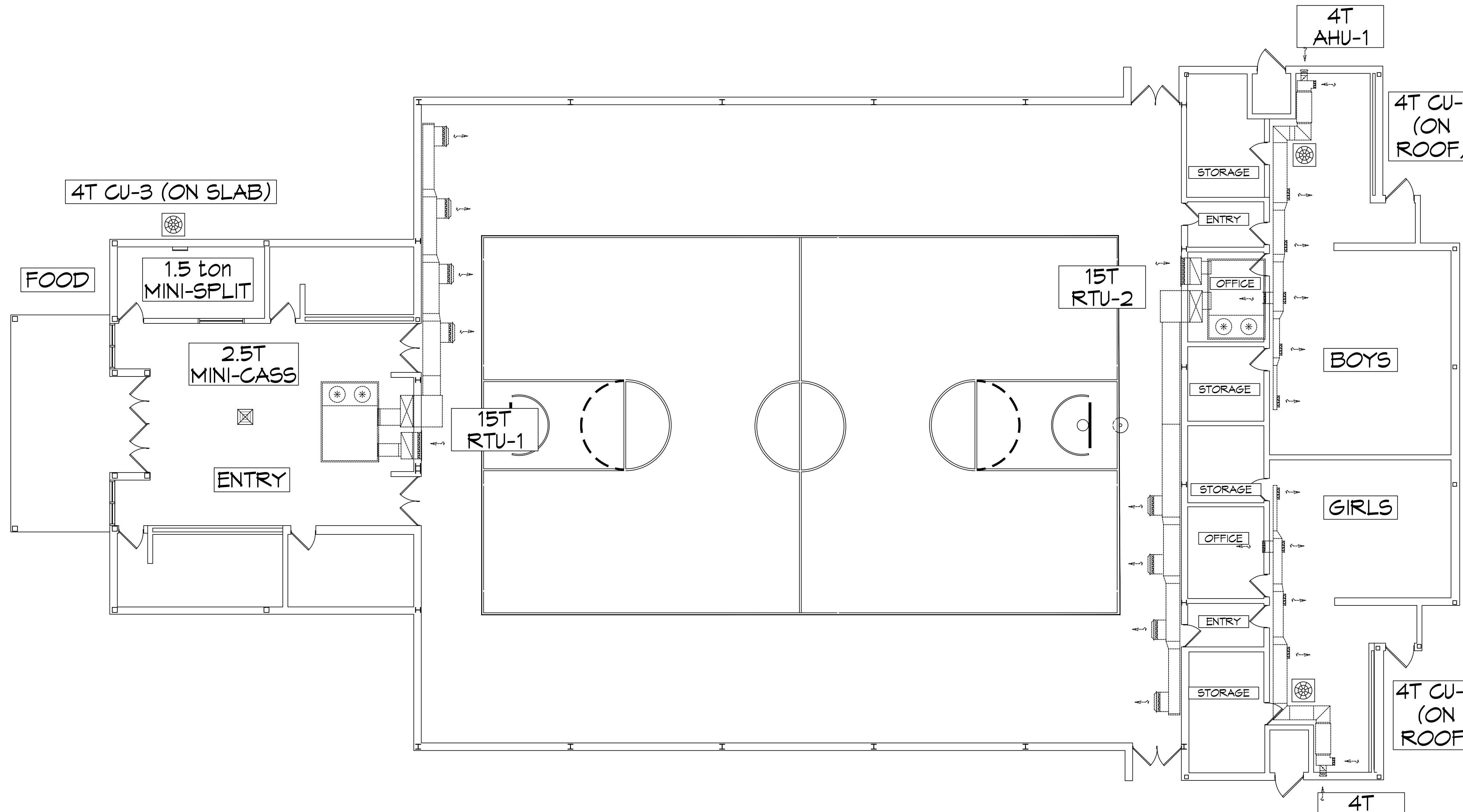
NOTES:

SPLIT SYSTEM DX SCHEDULE - BOYET JUNIOR HIGH GYM																										
AIR HANDLER												CONDENSER														
TAG	AREA SERVED	Make/Model	Model / Size	Nominal Tonnage	Total CFM	OA CFM	External SP ("WC)	FAN		COOLING		FILTERS	HEAT		POWER			MCA	MOP	TAG	TRANE HEAT PUMP MODEL NO.	POWER			MCA	MOP
								QTY	HP	TMBH	SMB H		KW	STEPS	VAC	PH	Hz					VAC	PH	Hz		
AHU-3	Boys Locker Room	Trane	4TEE3F64	5	1980	340	0.4	1	1	60	41	MERV-6	7.2	1	208	1	60	52	60	CU-3	4TTR4060	208	1	60	34	60
AHU-4	Girls Locker Room	Trane	4TEE3F64	5	1980	300	0.4	1	1	60	41	MERV-6	7.2	1	208	1	60	52	60	CU-4	4TTR4060	208	1	60	34	60

NOTES:



2 BUILDING ELEVATION
SCALE: 1/8" = 1'-0"



3 MECHANICAL PLAN
SCALE: 1/8" = 1'-0"

MECHANICAL LEGEND	
	RETURN AIR GRILLE
	4-WAY SUPPLY AIR GRILLE
	3-WAY SUPPLY AIR GRILLE
	2-WAY SUPPLY AIR GRILLE
	SLOT DIFFUSER
	EXHAUST FAN
	SUPPLY DUCT
	RETURN AIR DUCT
	EXHAUST AIR DUCT
	DAMPER CONTROL
	CFM SIZE MK
ROUND FLEX DUCT, MAX. LENGTH 16'-0". MIN. R-6. DUCT SIZE AS FOLLOWS: - 250 CFM TO 350 CFM = 9" - 200 CFM TO 250 CFM = 8" - 150 CFM TO 200 CFM = 7" - 100 CFM TO 150 CFM = 6"	

DAMMON ENGINEERING, INC.
LOUISIANA & MISSISSIPPI
www.dammonengineering.com
info@dammonengineering.com
PH: 985.649.5832

REVISIONS	DATE
#	DESCRIPTION

SEAL:

MECHANICAL RENOVATIONS
BOYET JUNIOR HIGH SCHOOL
51295 Rebel Dr.
Sibley, LA 70461
JOB No: 2465
DATE: 12-1-2022
DRAWN BY: CKD
CHECKED BY: BAW

SHEET TITLE:
MECHANICAL PLAN
DRAWING NUMBER:
M101
SHEET No: 2 of 1