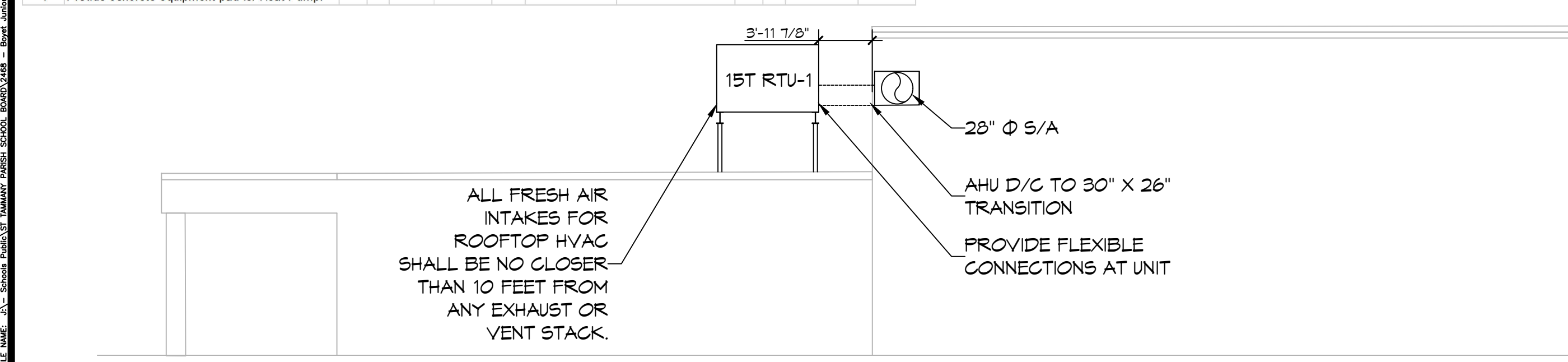


SPLIT SYSTEM DX SCHEDULE - SIXTH WARD																										
TAG	AREA SERVED	Make	Model	Nominal Tonnage	Total CFM	AIR HANDLER					CONDENSER					REMARKS										
						OA CFM	External SP ("WC)	FAN		COOLING		FILTERS	KW	POWER												
								QTY	HP	TMBH	SMB H			VAC	PH		Hz	MCA								
AHU-1	Boys Locker Room	Daikin	ARUF49D14	4	1420	340	0.3	1	1/3	60	41	MERV-6	9.6	1	208	3	60	48	CU-3	Daikin	DX13SA0483A	208	3	60	17.6	1, 2, 3, 4
AHU-2	Girls Locker Room	Daikin	ARUF49D14	4	1420	300	0.3	1	1/3	60	41	MERV-6	9.6	1	208	3	60	48	CU-4	Daikin	DX13SA0483A	208	3	60	17.6	1, 2, 3, 4

MIN-SPLIT SCHEDULE																			
Tag	Make	Model	Cooling (MBH)	Heating (BTUH)	Power (KW)	MCA	Remarks	HEAT PUMP				Remarks							
								VAC	PH	Hz	MCA								
MS-1	Daikin	FCQ36TAVJU	36	40	208	1	15	CU-2	Daikin	RZQ36TAVJUA	208	1	29.1	1, 2, 4					
MS-2	Daikin	FTB18AXVJU	18	12.6	208	1	1, 2, 3	CU-2	Daikin	RXB18AXVJU	208	1	16.2 (System)	1, 2, 3					

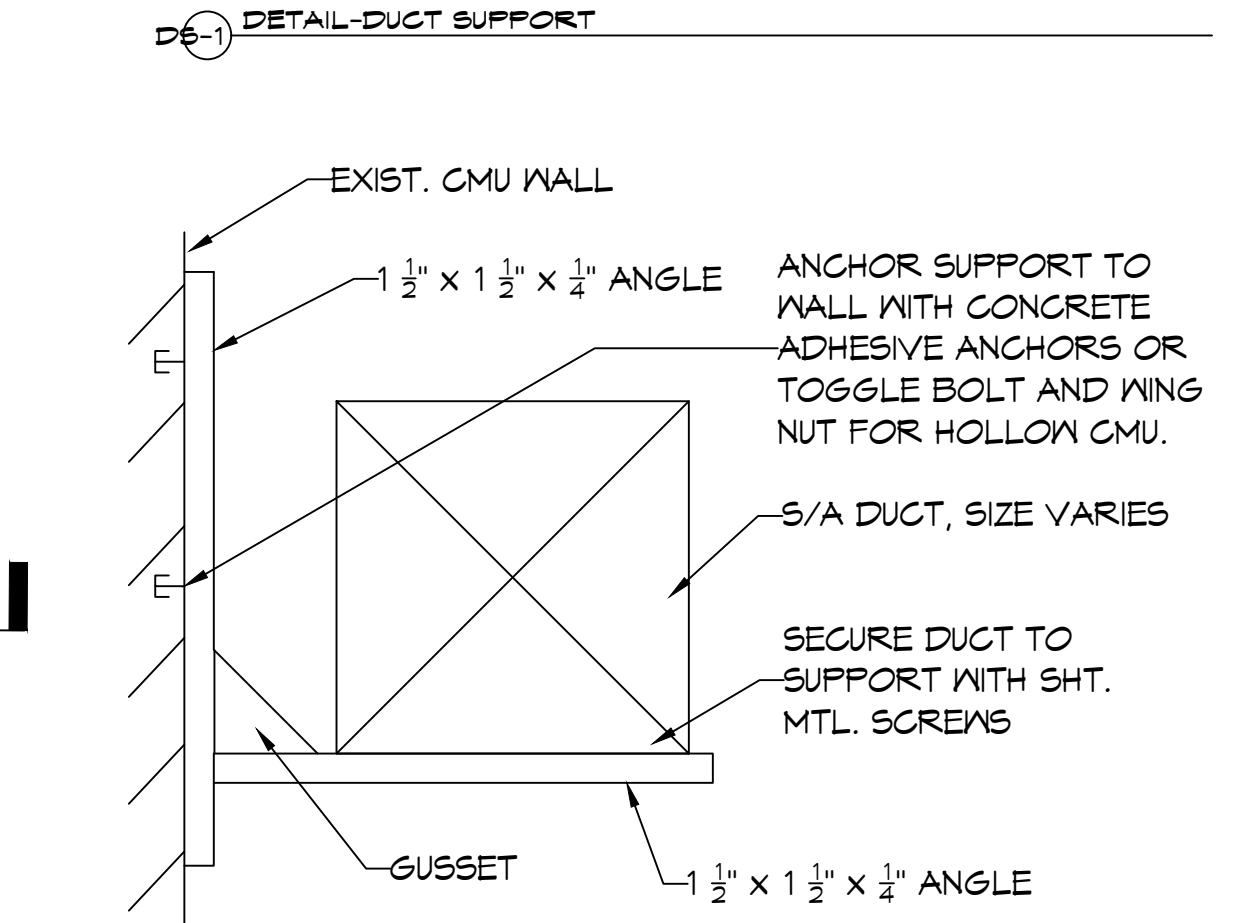
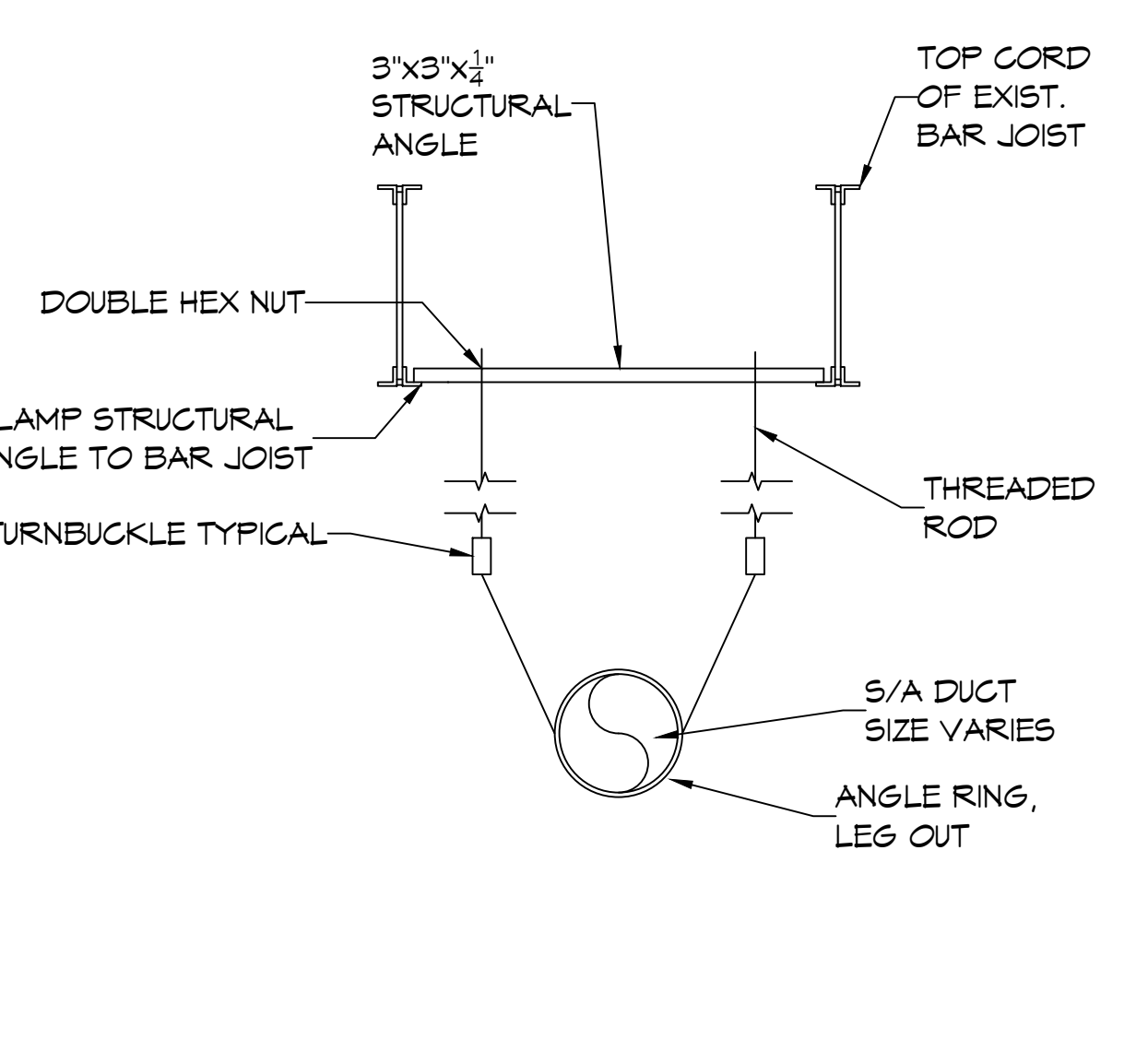
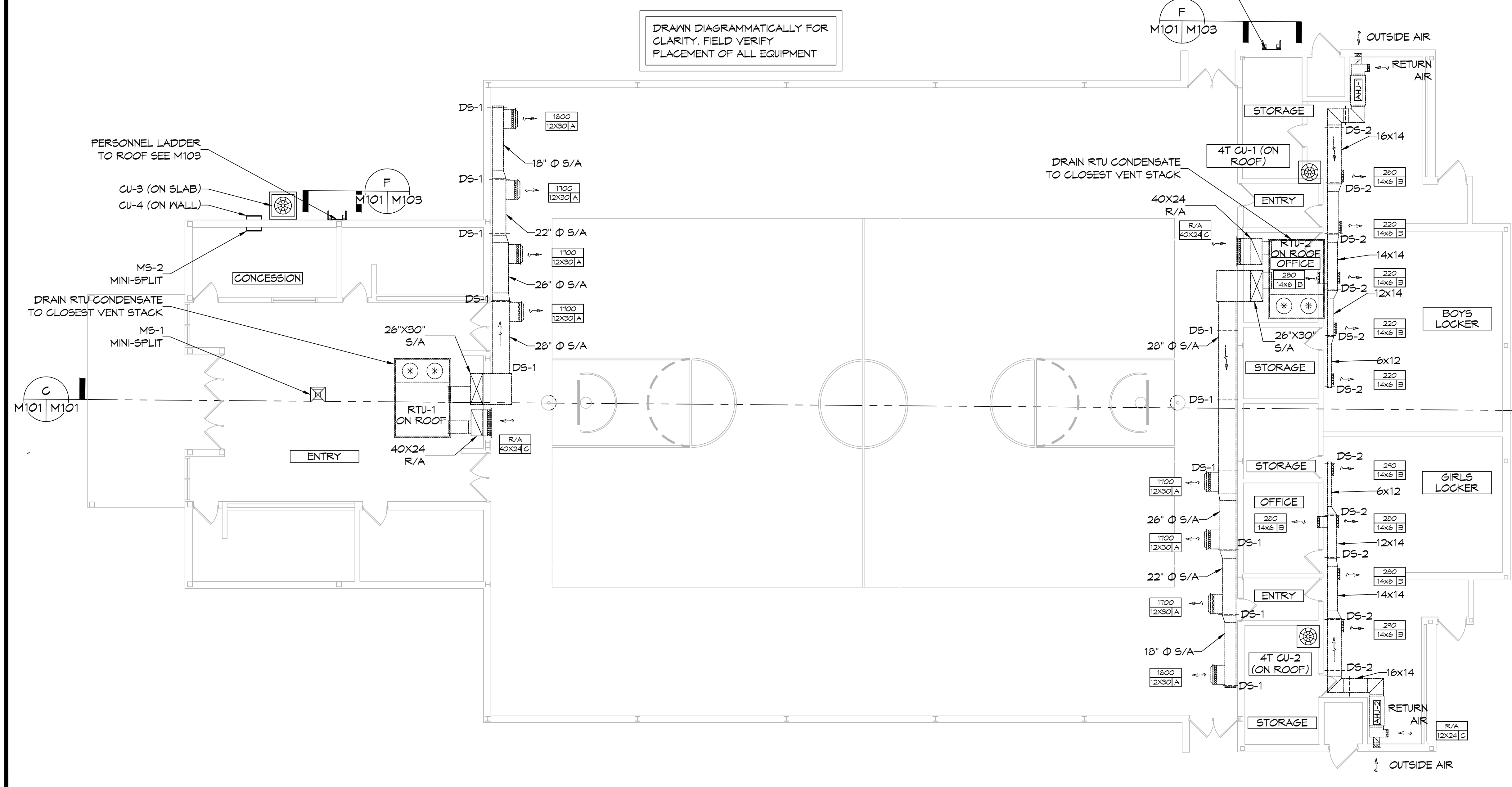


PACKAGED A/C SCHEDULE - Boyet																			
TAG	AREA SERVED	Make/Model	Model / Size	Nominal Tonnage	Total CFM	OA CFM	External SP ("WC)	ROOFTOP UNIT					REMARKS						
								QTY	HP	FAN		COOLING		FILTERS	POWER				
										TMBH	SMB H	EDB				EWB			
AHU-1	Gym	Trane	TSJ180_3	15	6900	2680	0.6	2	3	200.7	125.9	83.5	71.1	MERV-8	208	3	60	78	1, 2, 3, 4
AHU-2	Gym	Trane	TSJ180_3	15	6900	2680	0.6	2	3	200.7	125.9	83.5	71.1	MERV-8	208	3	60	78	1, 2, 3, 4

DIFFUSER SCHEDULE			
Mark No.	Service	Neck Size	Description
A	Supply Air	Ref. Plan	Krueger DFL Adjustable Drum Register with Opposed Blade Damper
B	Supply Air	Ref. Plan	Price 620D Double Deflection Register with Damper
C	Return Air	Ref. Plan	Price 630D Lower Return with Damper

- ### GENERAL NOTES
- CONCEALED DUCTWORK TO BE GALVANIZED SHEET METAL WRAPPED WITH FIBROUS GLASS DUCT WRAP WITH FSK VAPOR BARRIER, MIN R-6. INSTALLED PER SMACNA STANDARDS. DUCT WORK IMMEDIATELY DOWNSTREAM FROM RTU SHALL BE LINED FOR SOUND ATTENUATION.
 - EXPOSED DUCTWORK TO BE GALVANIZED SHEET METAL LINED WITH FIBROUS GLASS DUCT WRAP, MIN R-6. INSTALLED PER SMACNA STANDARDS AND SPECIFICATIONS.
 - DUCT SIZES SHOWN ARE CLEAR INSIDE DIMENSIONS.
 - IN ALL SYSTEMS OVER 2000 CFM AND LESS THAN 15,000 CFM, SMOKE DETECTORS SHALL BE INSTALLED IN ACCORDANCE WITH NFPA 72E IN THE RETURN DUCT DOWNSTREAM OF THE AIR HANDLING UNIT AND ALL FILTERS TO AUTOMATICALLY STOP THE FAN.
 - CONDENSATE DRAINS TO BE PVC PIPE RUN TO PLUMBERS P-TRAP WITHIN FIVE FEET OF AIR HANDLING UNITS.
 - ALL AIR HANDLING SYSTEMS TO BE BALANCED TO ASSURE PROPER AIR FLOWS PER PLANS.
 - ALL SUPPLY AIR VENTS SHALL BE EQUIPPED WITH AIR CONTROL DAMPERS AT THE REGISTER.
 - REFRIGERANT LINES SHALL BE SIZED BY UNIT MANUFACTURER AND INSTALLED ACCORDING TO MANUFACTURER'S INSTRUCTIONS.
 - FRESH AIR SHALL BE SUPPLIED TO EACH AIR HANDLER THROUGH EXTERIOR WALL DUCT SUPPLIED WITH A CONTROL DAMPER.
 - ALL MECHANICAL SYMBOLS ARE DRAWN DIAGRAMMATICALLY, CONTRACTOR TO VERIFY WITH OWNER LOCATIONS OF VENTS, DAMPERS, REGISTERS, ETC.
 - FINAL LOCATION OF TEMPERATURE CONTROLS TO BE COORDINATED WITH OWNER AT JOB SITE.
 - PROVIDE AND INSTALL SMOKE DETECTORS AS APPROVED BY LOCAL AHJ'S. PLACE NEAR R/A AND S/A OPENINGS OF AHU AND PROVIDE WITH ACCESS PANEL, WIRING BY ELECTRICAL CONTRACTOR.
 - PROVIDE BIRD SCREENS AT ALL EXTERIOR MECHANICAL PENETRATIONS.

BUILDING ELEVATION
SCALE: 1/8" = 1'-0"



MECHANICAL LEGEND

[Symbol]	RETURN AIR GRILLE	[Symbol]	EXHAUST FAN
[Symbol]	4-WAY SUPPLY AIR GRILLE	[Symbol]	SUPPLY DUCT
[Symbol]	3-WAY SUPPLY AIR GRILLE	[Symbol]	RETURN AIR DUCT
[Symbol]	2-WAY SUPPLY AIR GRILLE	[Symbol]	EXHAUST AIR DUCT
[Symbol]	SLOT DEFUSER	[Symbol]	DAMPER CONTROL
[Symbol]	DUCT SUPPORT	[Symbol]	CFM

ROUND FLEX DUCT, MAX. LENGTH 16'-0". MIN. R-6. DUCT SIZE AS FOLLOWS:
 - 250 CFM TO 350 CFM = 9"
 - 200 CFM TO 250 CFM = 8"
 - 150 CFM TO 200 CFM = 7"
 - 100 CFM TO 150 CFM = 6"

DAMMON ENGINEERING, INC.
LOUISIANA & MISSISSIPPI
www.dammonengineering.com
info@dammonengineering.com
PH: 985.649.5832

Chief Engineer: Brian Misch, PE
554 Old Spanish Trail
Slidell, LA 70458

REVISIONS	DATE



MECHANICAL PLAN

BOYET JUNIOR HIGH SCHOOL

51295 Rebel Dr., Slidell, LA 70461
 JOB No: 2465 DATE: 3-1-2023
 DRAWN BY: CKD CHECKED BY: BAY

SHEET TITLE: MECHANICAL PLAN

DRAWING NUMBER: **M101**

SHEET No: 5 of 9