

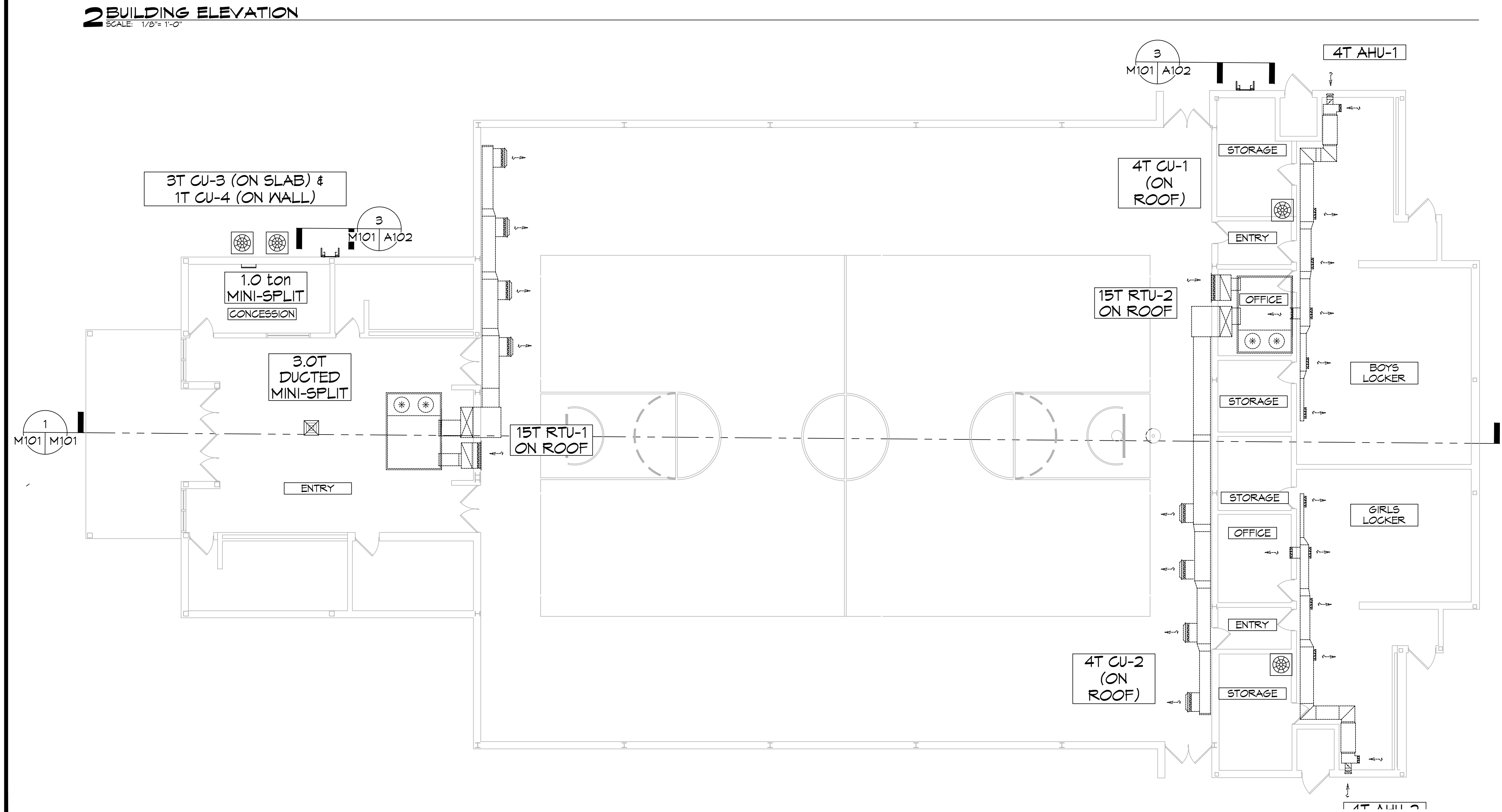
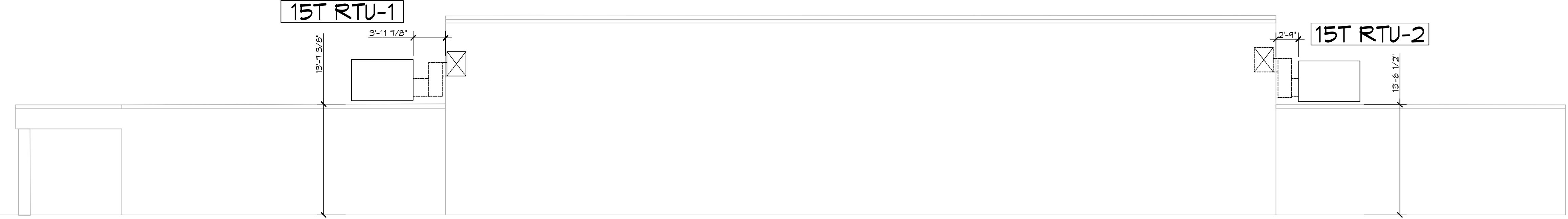
SPLIT SYSTEM DX SCHEDULE - Boyet																										
AIR HANDLER										CONDENSER																
TAG	AREA SERVED	Make	Model	Nominal Tonnage	Total CFM	OA CFM	External SP ("WC)	FAN			COOLING			FILTERS		HEAT		POWER			MCA	REMARKS				
								QTY	HP	TMBH	SMBH	H	KW	STEPS	VAC	PH	Hz	VAC	PH	Hz						
AHU-1	Boys Locker Room	Daikin	ARUF49D14	4	1420	340	0.3	1	1/3	60	41	MERV-6	4.5	1	208	3	60	26	CU-3	Daikin	DX13SA0483A	208	3	60	17.6	1, 2
AHU-2	Girls Locker Room	Daikin	ARUF49D14	4	1420	300	0.3	1	1/3	60	41	MERV-6	4.5	1	208	3	60	26	CU-4	Daikin	DX13SA0483A	208	3	60	17.6	1, 2

MIN-SPLIT SCHEDULE													
AIR HANDLER						HEAT PUMP							
Tag	Make	Model	Cooling		MCA	Remarks	Tag	Make/Model	Heating		MCA	Remarks	
			(MBH)	(BTUH)					(BTUH)	(BTUH)			
MS-1	Daikin	FCQ36TAVJU	36	40	208	2.9	CU-3	Daikin	RZQ36TAVJUA	208	1	29.1	1, 2, 3
MS-2	Daikin	FTB12AXVJU	11	11.3	208	1	CU-4	Daikin	RXB12AXVJU	208	1	7.7	(System) 1, 2, 3

NOTES:
 1 Cooling capacities to be rated in accordance with AHRI standard 210/290 for ASHRAE standard design weather conditions in New Orleans, LA.
 2 Install units in accordance with manufacturer's recommendations.
 3 Provide controls per attached drawings and specifications.
 4 Provide new filters after commissioning and final acceptance.

PACKAGED A/C SCHEDULE - Boyet																					
ROOFTOP UNIT																					
TAG	AREA SERVED	Make/Model	Model / Size	Nominal Tonnage	Total CFM	OA CFM	External SP ("WC)	FAN			COOLING			FILTERS		POWER			MCA	REMARKS	
								QTY	HP	TMBH	SMBH	EDB	EWB	MERV-8	MERV-8	MERV-8	VAC	PH			Hz
RTU-1	Gym	Trane	TSJ180_3	15	6900	2680	0.6	2	3	200.7	125.9	83.5	71.1	MERV-8	MERV-8	MERV-8	208	3	60	78	1, 2, 3, 4, 5
RTU-2	Gym	Trane	TSJ180_3	15	6900	2680	0.6	2	3	200.7	125.9	83.5	71.1	MERV-8	MERV-8	MERV-8	208	3	60	78	1, 2, 3, 4, 5

NOTES:
 1 Cooling capacities to be rated in accordance with AHRI standard 210/290 for ASHRAE standard design weather conditions in New Orleans, LA.
 2 Install units in accordance with manufacturer's recommendations.
 3 Provide controls per attached drawings and specifications.
 4 Provide new filters after commissioning and final acceptance.
 5 Provide powered GFCI convenience outlet.



MECHANICAL LEGEND	
[Symbol]	RETURN AIR GRILLE
[Symbol]	4-WAY SUPPLY AIR GRILLE
[Symbol]	3-WAY SUPPLY AIR GRILLE
[Symbol]	2-WAY SUPPLY AIR GRILLE
[Symbol]	SLOT DEFUSER
[Symbol]	EXHAUST FAN
[Symbol]	SUPPLY DUCT
[Symbol]	RETURN AIR DUCT
[Symbol]	EXHAUST AIR DUCT
[Symbol]	DAMPER CONTROL
[Symbol]	CFM
[Symbol]	SIZE MK
[Symbol]	ROUND FLEX DUCT, MAX. LENGTH 16'-0". MIN. R-6. DUCT SIZE AS FOLLOWS: - 250 CFM TO 350 CFM = 9" - 200 CFM TO 250 CFM = 8" - 150 CFM TO 200 CFM = 7" - 100 CFM TO 150 CFM = 6"

DAMMON

ENGINEERING, INC.

LOUISIANA & MISSISSIPPI

Chief Engineer: Brian Mistich, PE
 554 Old Spanish Trail
 Slidell, LA 70458
 www.dammonengineering.com
 info@dammonengineering.com
 PH: 985.649.5832

REVISIONS	DATE

SEAL:

MECHANICAL RENOVATIONS

BOYET JUNIOR HIGH SCHOOL

M101

5/2/25	Rebel Dr.	12-1-2022	BAK
2465	Slidell, LA 70461	12-1-2022	BAK
JOB No:	2465	DATE:	12-1-2022
DRAWN BY:	CKD	CHECKED BY:	CKD

SHEET TITLE: MECHANICAL PLAN
DRAWING NUMBER: M101
SHEET No: 2 of 1