

SPLIT SYSTEM DX SCHEDULE - SIXTH WARD																										
TAG	AREA SERVED	Make	Model	Nominal Tonnage	Total CFM	AIR HANDLER				CONDENSER				REMARKS												
						OA CFM	External SP ("WC)	FAN	COOLING	FILTERS	HEAT	POWER	TAG		MAKE	MODEL	POWER									
							QTY	HP	TMBH	SMB H	KW	STEPS	VAC	PH	Hz	MCA										
AHU-1	Boys Locker Room	Daikin	ARUF49D14	4	1420	340	0.3	1	1/3	60	41	MERV-6	9.6	1	208	3	60	48	CU-3	Daikin	DX135A0483A	208	3	60	17.6	1, 2, 3, 4
AHU-2	Girls Locker Room	Daikin	ARUF49D14	4	1420	300	0.3	1	1/3	60	41	MERV-6	9.6	1	208	3	60	48	CU-4	Daikin	DX135A0483A	208	3	60	17.6	1, 2, 3, 4

MIN-SPLIT SCHEDULE																
Tag	Make	Model	AIR HANDLER			HEAT PUMP										
			Cooling (MBH)	Heating (BTUH)	Power (VAC PH)	MCA	Remarks	Tag	Make/Model	Model	Power (VAC PH)	MCA	Remarks			
MS-1	Daikin	FCQ36TAVJU	36	40	208	1	15			CU-2	Daikin	RZQ36TAVJUA	208	1	29.1	1, 2, 4
MS-2	Daikin	FTB18AXVJU	18	12.6	208	1				CU-2	Daikin	RXB18AXVJU	208	1	16.2 (System)	1, 2, 3

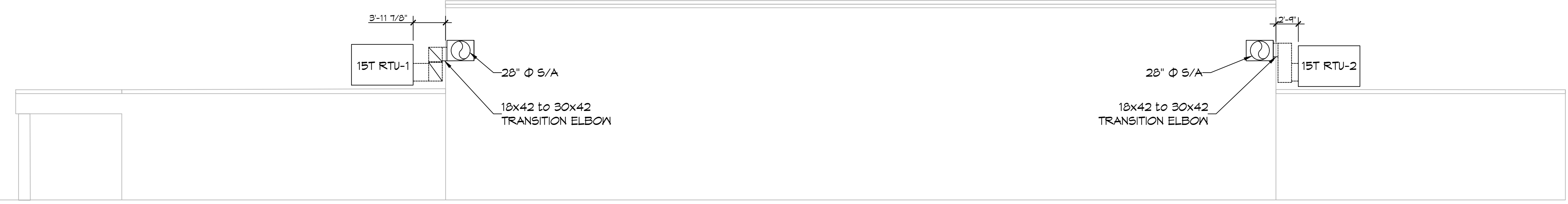
NOTES:
 1. Install per Manufacturer's recommendations
 2. Provide new filters after commissioning and final acceptance.
 3. Furnish with condensate pump removal kit and pan "Safe-T" float switch
 4. Provide concrete equipment pad for Heat Pump.

DIFFUSER SCHEDULE			
Mark No.	Service	Neck Size	Description
A	Supply Air	Ref. Plan	Krueger DPL Adjustable Drum Register with Opposed Blade Damper
B	Supply Air	Ref. Plan	Price 620D Double Deflection Register with Damper
C	Return Air	Ref. Plan	Price 630D Lower Return with Damper

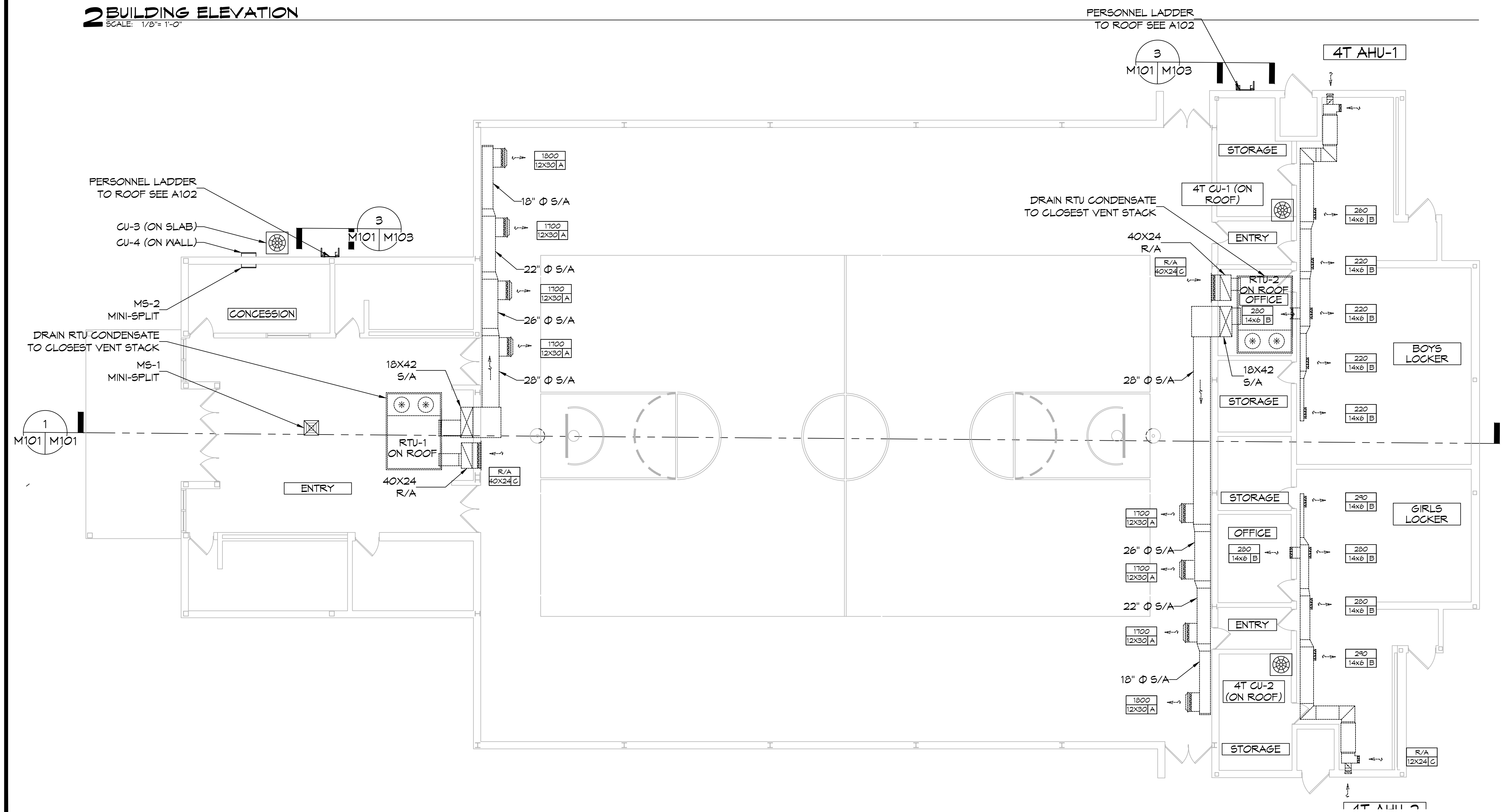
1. Coordinate with Architect / Owner for colors and finish.

PACKAGED A/C SCHEDULE - Boyet																										
TAG	AREA SERVED	Make/Model	Model / Size	Nominal Tonnage	Total CFM	ROOFTOP UNIT				FAN				COOLING				FILTERS				POWER				REMARKS
						OA CFM	External SP ("WC)	FAN	COOLING	FILTERS	HEAT	POWER	TAG	MAKE	MODEL	POWER	VAC	PH	Hz	MCA						
AHU-1	Gym	Trane	TSJ180_3	15	6900	2680	0.6	2	3	200.7	125.9	83.5	71.1	MERV-8	MERV-8	MERV-8	MERV-8	208	3	60	78	1	2, 3, 4			
AHU-2	Gym	Trane	TSJ180_3	15	6900	2680	0.6	2	3	200.7	125.9	83.5	71.1	MERV-8	MERV-8	MERV-8	MERV-8	208	3	60	78	1	2, 3, 4			

NOTES:
 1. Cooling capacities to be rated in accordance with AHRI standard 210/290 for ASHRAE standard design weather conditions in New Orleans, LA.
 2. Provide controls per attached drawings and specifications
 3. Install units in accordance with manufacturer's recommendations.
 4. Provide new filters after commissioning and final acceptance.



2 BUILDING ELEVATION
 SCALE: 1/8" = 1'-0"



MECHANICAL LEGEND

	RETURN AIR GRILLE		EXHAUST FAN
	4-WAY SUPPLY AIR GRILLE		SUPPLY DUCT
	3-WAY SUPPLY AIR GRILLE		RETURN AIR DUCT
	2-WAY SUPPLY AIR GRILLE		EXHAUST AIR DUCT
	SLOT DIFFUSER		DAMPER CONTROL

CFM SIZE MK

ROUND FLEX DUCT, MAX. LENGTH 16'-0". MIN. R-6. DUCT SIZE AS FOLLOWS:
 - 250 CFM TO 350 CFM = 9"
 - 200 CFM TO 250 CFM = 8"
 - 150 CFM TO 200 CFM = 7"
 - 100 CFM TO 150 CFM = 6"

3 MECHANICAL PLAN
 SCALE: 1/8" = 1'-0"

DAMMON ENGINEERING, INC.
 LOUISIANA & MISSISSIPPI
 Chief Engineer: Brian Mistich, PE
 554 Old Spanish Trail
 Slidell, LA 70458
 www.dammonengineering.com
 info@dammonengineering.com
 PH: 985.649.5832

REVISIONS	DATE
# DESCRIPTION	

SEAL:

MECHANICAL RENOVATIONS
BOYET JUNIOR HIGH SCHOOL
 51295 Rebel Dr.
 Slidell, LA 70461
 JOB No: 2465 DATE: 12-11-2022
 DRAWN BY: CKD CHECKED BY: BAY

SHEET TITLE:
 MECHANICAL PLAN

DRAWING NUMBER:
M101

SHEET No: 2 of 7