

FOR EXHAUST FANS MARK EF-3, 4, 5, 6, 9 AND 10:
 PROVIDE 14" x 14" EXHAUST REGISTER IN CEILING, CONNECT TO
 12" x 12" EXHAUST DUCT AND EXTEND TO EF ON ROOF.

FOR EXHAUST FAN MARK EF-7:
 PROVIDE 18" x 18" EXHAUST REGISTER IN CEILING, CONNECT TO
 16" x 16" EXHAUST DUCT AND EXTEND TO EF ON ROOF.

FOR EXHAUST FAN MARK EF-8:
 PROVIDE 16" x 16" EXHAUST REGISTER IN CEILING, CONNECT TO
 14" x 14" EXHAUST DUCT AND EXTEND TO EF ON ROOF.

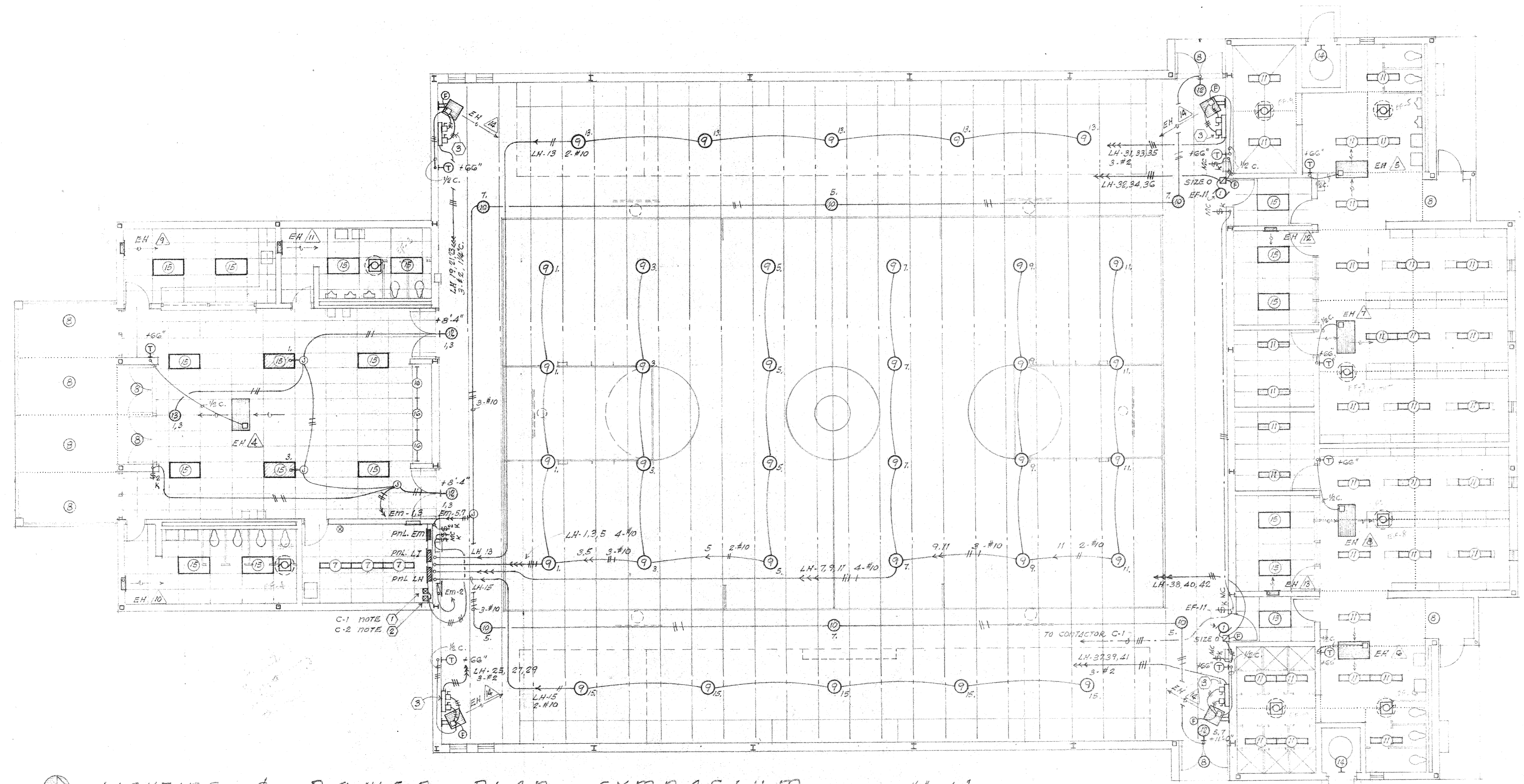
- NOTES:
- PROVIDE ASCO #1255-JGG RC (#1GG60-C) LIGHTING CONTACTOR FOR CONTROL OF CUTS. LH-13, 5, 7, 9 & 11. CONTACTOR IS 6 POLE N.O., 600 V. 25 A. PER POLE. 120V. CONTROL Ckt. ASMA 1 ENCLOSURE. MOUNT 8" O" ABOVE FLOOR. CONTROL W/ 5/16" FROM 3 POINTS.
 - PROVIDE ASCO #1255-JGG RC (#1GG20-C) SAME AS ABOVE EXCEPT 2 P. N.O. FOR CONTROL OF CUTS. LH-13 & 15. CONTROL FROM 1 POINT.
 - SPLIT Ckt. SUPPLYING EH 14 INTO TWO Ckts. RUN MAIN Ckt. TO 2" x 4" x LENGTH AS REQ'D. WRING TROUGH W/ TWO 60 A. 3P. D.S. W/ 3-6G FROM EACH D.S. CONNECT FIBESTAT TO BREAK LINE OF THERMOSTAT. MOUNT TROUGH AT HEATER MOUNTING HEIGHT.

project no. 5108
 drawn
 checked
 date
 revised

HAMILTON, MEYER and ASSOCIATES, INC.
 ARCHITECT and ENGINEER

ADDITIONS TO BOYET JUNIOR HIGH SCHOOL
 SLIDELL, LOUISIANA
 ST. TAMMANY PARISH SCHOOL BOARD, OWNER

sheet no. E-1
 of sheets



LIGHTING & POWER PLAN - GYMNASIUM - SCALE: 1/8" = 1'-0"

NOTE: PRIOR APPROVAL REQUIRED FOR ANY SUBSTITUTION.

LIGHT		FIXTURE		SCHEDULE		REMARKS
NO.	MANUFACTURER	CATALOG NO.	LAMPS	MOUNTING	VOLTAGE	
1	LITHONIA	STC-240M-PL	4-F40 T12 CW	C W R P	120	8' TANDUM 1/2" x 1/2" PLASTIC LAMPER METAL SIDES 16" STEM & HANGER SET, L.A. BOARD OF HEALTH APPROVED.
2	"	CT-240M-PL	2-F40 T12 CW	"	120	SAME AS FIXTURE 1 EXCEPT 4' LONG.
3	"	BTCB-240-A	4-F40 T12 CW	"	120	7" WIDE x 8" TANDUM WRAP AROUND UNIT WITH CLEAR ACRYLIC PRISMATIC DIFFUSER.
4	"	CB-240-A	2-F40 T12 CW	"	120	SAME AS FIXTURE 3 EXCEPT 4' LONG
5	"	CB-140-A	1-F40 T12 CW	"	120	SAME AS FIXTURE 4 EXCEPT SINGLE LAMP UNIT
6	PRESOLITE	CF-28-LEX	1-100 W A19 IF	"	120	LEXAN DIFFUSER, ALU. TRIM
7	LITHONIA	C-240	2-F40 T12 CW	"	120	4' CHANNEL STRIP
8	LIGHTING EQUIP.	10-112-PK	1-150W A23 IF	"	120	INC. PRE-WIRED DOWNLIGHT WITH SPREAD TRIM AND PLASTIC PRIMATE.
9	LITHONIA HI-TEK DIM.	TH-400-H-ALW	1-1" 400-C-3U HOR METALARC	"	120	WIDE SPREAD DISC. FOR GYM APPLICATION, W/ WIRE GUARD, WHITE CYLINDRICAL DECORATIVE SHADE, 1/2" SWIVEL STEM.
10	VISA	900G	1-300W R40-FL	"	120	8" x 16" LONG PENDANT CYLINDER, 8" SWIVEL STEM, WITH RECTIFIER Ckt., WHITE FINISH.
11	LITHONIA	DV-240-DR	2-F40 T12 CW	"	120	WATERPROOF UNIT WITH CLEAR ACRYLIC ALEXIGLAS DIFFUSER.
12	PERFECTITE	P-33G-EM	4-C7-7W INC.	"	120	RECESSED WALL MOUNT, 6" WHITE LETTERS ON GREEN PLEXIGLAS, NO ARROWS, WIRED FOR 2 CUTS.
13	"	P-37G-EM	4-C7-7W INC.	"	120	CEILING MOUNT, 6" WHITE LETTERS ON GREEN PLEXIGLAS, NO ARROWS, SINGLE FACE, WIRED FOR 2 CUTS.
14	P & S	4057	1-150W A23 IF	"	120	KEYLESS PORCELAIN RECEPTACLE
15	LITHONIA	EG-440-A12	4-F40 T12 CW	"	120	2' x 4' LAY IN TROFFER, HINGED AND LATCHED STEEL DOOR, AIR ACRYLIC PRISMATIC DIFFUSER.
16	WAGNER WOODRUFF	ET299/28	1-F40 T12 CW	MOUNT IN TROPHY CASE	120	4' LONG CHANNELITE STRIP

MOUNTING: C= CEILING OR SURFACE; W= WALL; R= RECESSED; P= PENDANT
 * 60,000 HOUR LAMP LIFE
 * 1/2" LONG HANGER STEM SPECIFIED, MATCH EXISTING MOUNTING HEIGHT, STEM SETS MAY BE SHORTER, V.O.D.

ELECTRIC HEATER SCHEDULE (CONTINUED FROM SHEET E-1)

MARK	CATALOG NO.	KW	VOLTAGE & PHASE	NO. OF STEPS	CFM	FAN HP	AREA SERVED	NON ELECTRICAL ACCESSORIES	REMARKS
EH 14	CUC-578-222G	10	208 V. 3φ	2	500	1/20	LOBBY (2)		21" LONG CEILING MOUNT (RECESSED) UNIT HEATER, FOR SINGLE 8'3" BOTTOM INLET, REMOTE 1/2" TERPROOF WALL THERMOSTAT & 1/2" POWER RELAY, AND MOTOR WIRED THRU 450V 15A Ckt. WITH CIRCUIT BREAKER.
EH 15	CUC-578-222G	4	208 V. 3φ	2	500	1/20	BOYS DRY-OFF (10)		SAME AS EH 14
EH 16	CUC-578-222G	4	208 V. 3φ	2	500	1/20	GIRLS DRY-OFF (20)		SAME AS EH 14
EH 17	CUC-578-232G	6	208 V. 3φ	2	500	1/20	BOYS LOCKERS (3)		SAME AS EH 14
EH 18	CUC-578-222G	4	208 V. 3φ	2	500	1/20	GIRL LOCKERS (16)		SAME AS EH 14
EH 19	RSF-430-S	3	208 V. 1φ	1	170	1/40	CONCESSIONS (3)	RA-AC-3 RECESS WALL BOX	WALL MOUNT UNIT HEATER, RECESS MOUNT WITH DISCONNECT SWITCH AND INTEGRAL THERMOSTAT, MOUNT BOTTOM 8" ABOVE FLOOR.
EH 20	RSF-430-S	3	208 V. 1φ	1	170	1/40	WOMEN'S RESTROOM (5)		SAME AS EH 19
EH 21	RSF-420-S	2	208 V. 1φ	1	170	1/40	MEN'S RESTROOM (4)		SAME AS EH 19
EH 22	RSF-415-S	1.5	208 V. 1φ	1	170	1/40	OFFICE (12)		SAME AS EH 19
EH 23	RSF-415-S	1.5	208 V. 1φ	1	170	1/40	OFFICE (17)		SAME AS EH 19
EH 24	LH-30-01	30	208 V. 3φ	2	155	.004	GYMNASIUM (7)	W/ H-03 WALL SWIVEL MOUNTING BRACKET	HORIZONTAL UNIT HEATER, 6" STUBS REMOTE 1/2" TERPROOF WALL THERMOSTAT, 1/4" HEATER RECD. (MARK EH 14), MOUNT BOTTOM 3P HEATER UP 15'-2"

NOTE: FURNISH CLEAR PLASTIC GUARDS WITH LOCK FOR ALL REMOTE WALL THERMOSTATS.

EXHAUST FAN SCHEDULE

MARK	AREA SERVED	MFG.	CATALOG NO.	CFM	S.P.	H.P.	R.P.M.	VOLTAGE & PHASE	SONES	REMARKS
EF-1	BOYS RESTROOM 6	ACME	PR 73	485	18"	140	1300	115 V. 1φ	3.9	AUTOMATIC BACKDRIFT DAMPER, BIRDSCREEN AND SAFETY DISCONNECT.
EF-2	GIRLS RESTROOM 7	"	PR 73	485	18"	140	1300	115 V. 1φ	3.9	"
EF-3	MEN'S RESTROOM 4	"	PR 73	365	18"	140	1070	115 V. 1φ	3.0	"
EF-4	WOMEN'S R.R. 5	"	PR 73	485	18"	140	1300	115 V. 1φ	3.9	"
EF-5	BOYS DRY-OFF 10	"	PR 73	485	18"	140	1300	115 V. 1φ	3.9	"
EF-6	GIRLS DRY-OFF 20	"	PR 73	485	18"	140	1300	115 V. 1φ	3.9	"
EF-7	BOYS LOCKERS 13	"	PR 11 CG	1340	18"	1/8	1160	115 V. 1φ	9.0	FIRESTAT REQ'D.
EF-8	GIRLS LOCKERS 16	"	PR 9 AG	845	18"	1/8	1160	115 V. 1φ	4.6	FIRESTAT REQ'D.
EF-9	BOYS SHOWERS 9	"	PR 73	485	18"	140	1300	115 V. 1φ	3.9	SAME AS EF-1 EXCEPT WITH ALKALYD BAKED ENAMEL FINISH.
EF-10	GIRLS SHOWERS 19	"	PR 73	485	18"	140	1300	115 V. 1φ	3.9	"
EF-11	GYM 7	"	DC 42 J	16400	18"	1	435	208 V. 3φ	14.9	PROPELLER WALL FAN (2 REQ'D) WITH SAFETY GUARD #WUC25DC WALL COLLAR # 2 BH 46-46 HEAVY DUTY AUTOMATIC W/CL. SHUTTER, 5/16" x 3/8" GREEN, FIRESTAT REQ'D.

PRIOR APPROVAL REQUIRED FOR ANY SUBSTITUTIONS GYMNASIUM