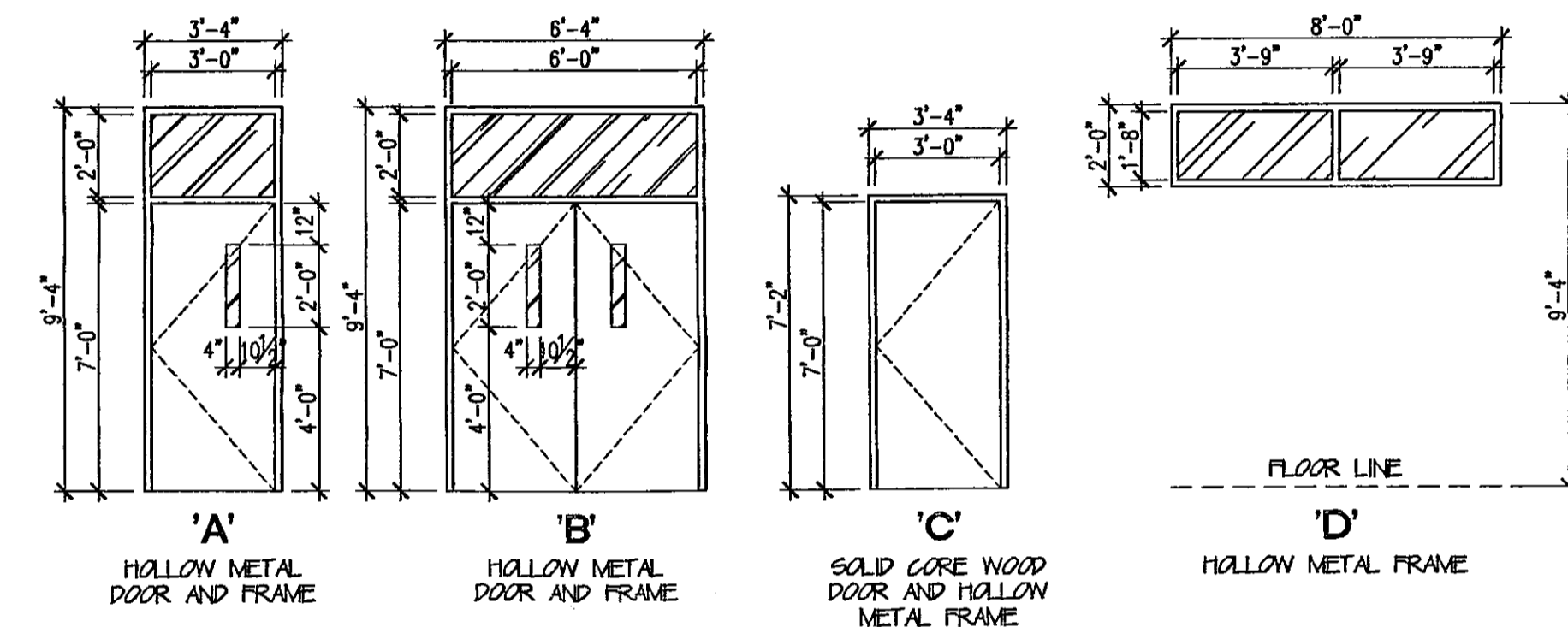
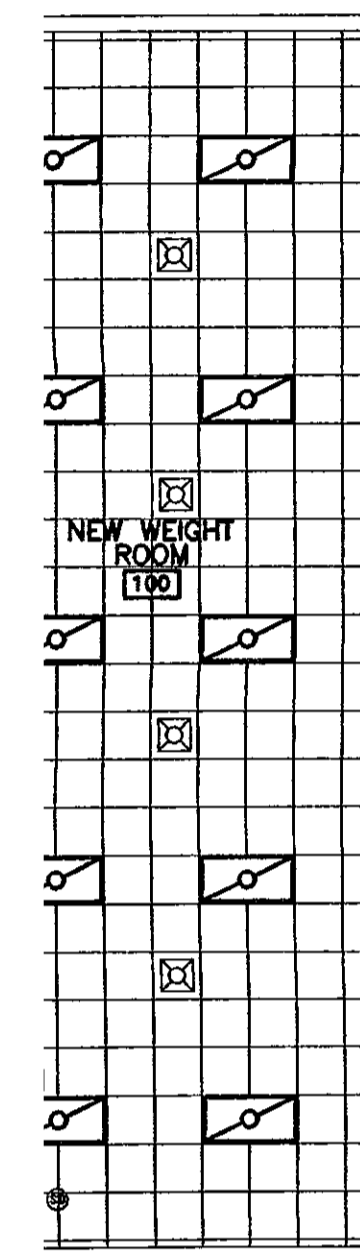


ROOM FINISH SCHEDULE						
ROOM (AREA) NUMBER	ROOM NAME	FLOOR	BASE	WALLS	CEILING	C.H. REMARKS
	CROSS ONLY INDICATES THAT FINISH IS TYPICAL FOR ENTIRE AREA UNLESS NOTED OTHERWISE					
	DOT INDICATES FINISH IS APPLICABLE AT WALL ON CORRESPONDING SIDE OF ROOM					
100	NEW WEIGHT ROOM	CONCRETE		PAINTED CMU	SUSP. ACOUSTICAL	10'-0" 1
101	HVAC CLOSET					
1A	ATTIC - NO WORK					
1B	MECHANICAL					
1C	ATTIC					

1. PRESSURE CLEAN EXISTING CMU WALL

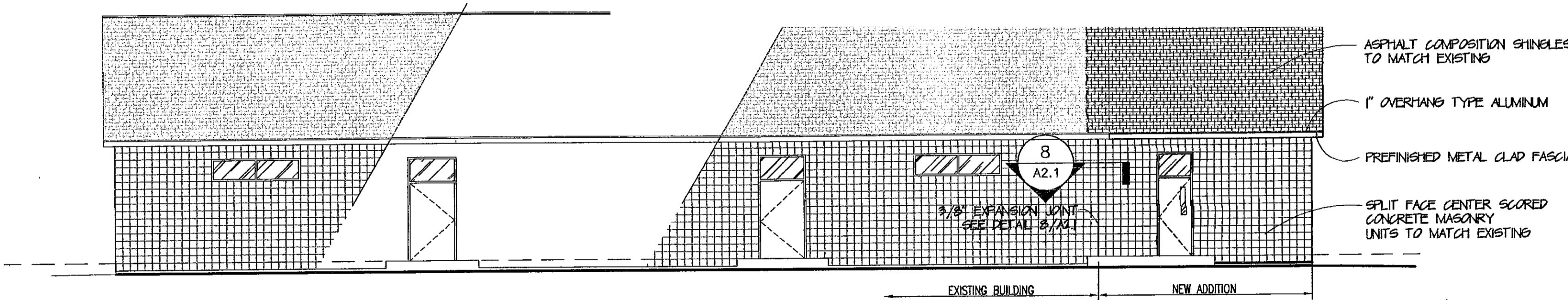
OPENING SCHEDULE					
MARK	TYPE	MATL	WIDTH	HEIGHT	REMARKS
A	D	HM	8'-0"	2'-0"	1/4" TEMPERED GLASS MATCH EXISTING TINT
01	B	HM	PAIR 3'-0"	7'-0"	1 3/4" THICK DOOR. SEE HEAD, JAMB, SILL DETAILS A3.2
02	A	HM	3'-0"	7'-0"	1 3/4" THICK DOOR. SEE HEAD, JAMB, SILL DETAILS A3.2
03	C	WD	3'-0"	7'-0"	1 3/4" THICK DOOR. SEE HEAD, JAMB, SILL DETAILS A3.2

NOTE: ALUM. = ALUMINUM, MANF. = SEE MANUFACTURER

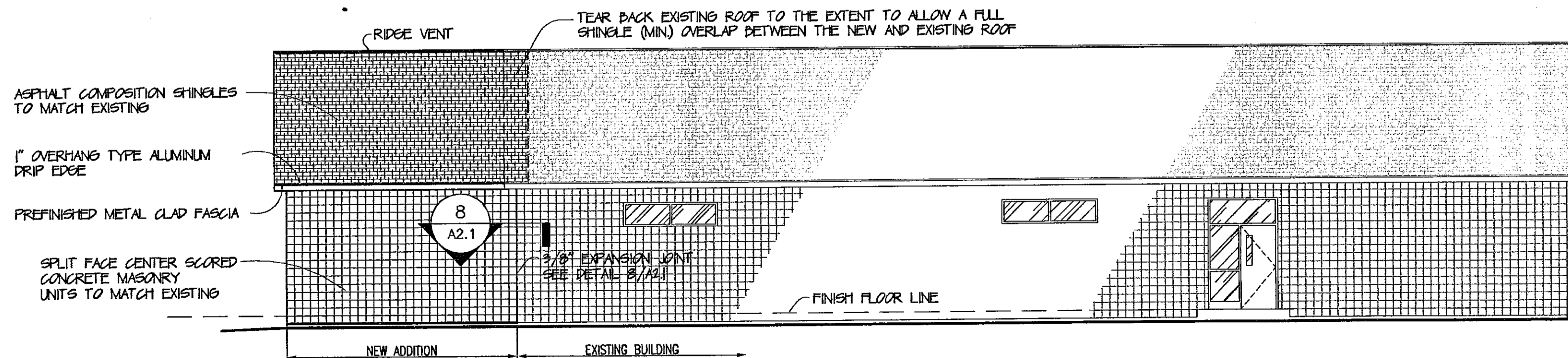


1 FLOOR PLAN  
A2.1 SCALE: 1/8" = 1'-0"

Excerpt from Fauntleroy & Latham plan for the Athletic Fieldhouse expansion dated 3 Nov 2011.

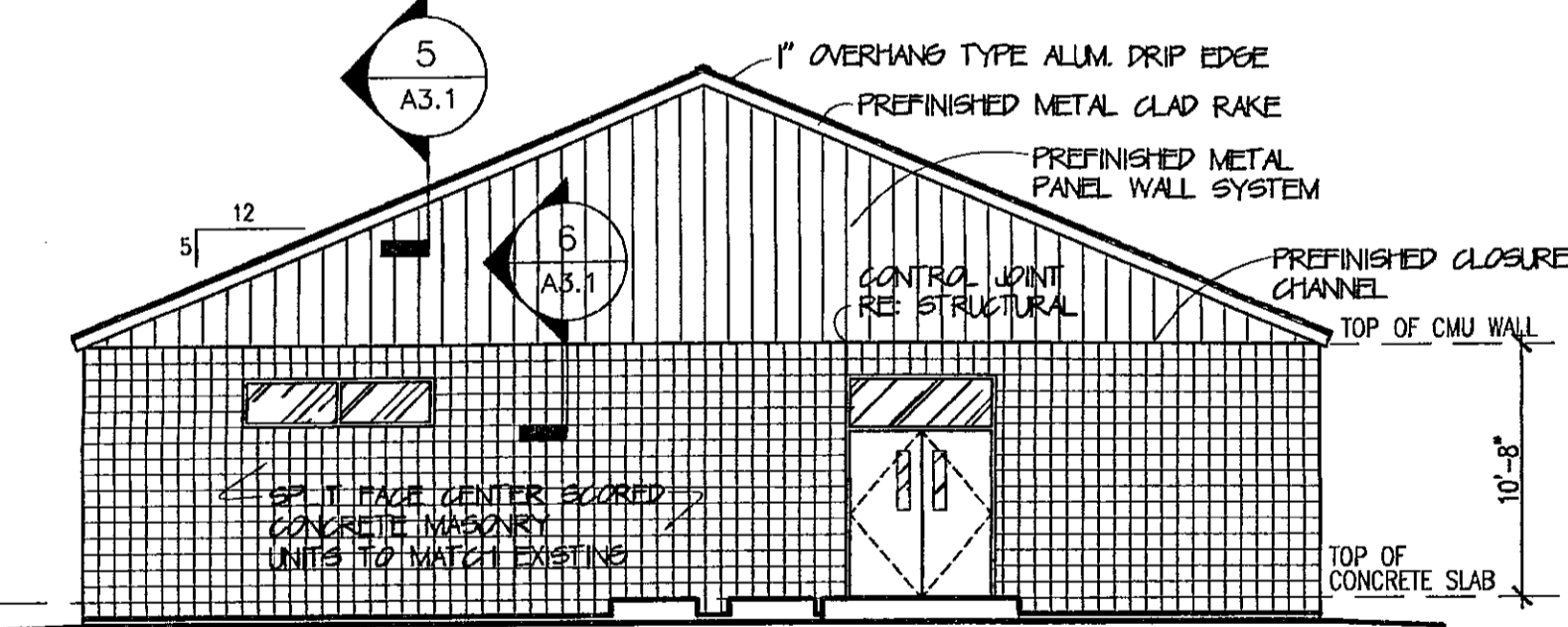


3 WEST ELEVATION  
A2.1 SCALE: 1/8" = 1'-0"



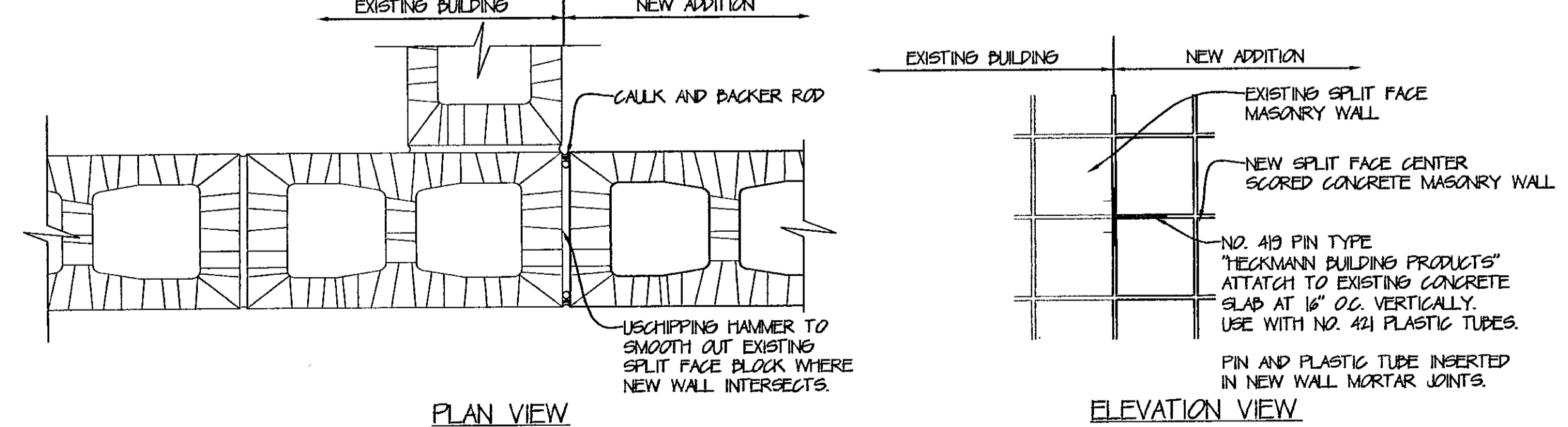
4 EAST ELEVATION  
A2.1 SCALE: 1/8" = 1'-0"

7 OPENING ELEVATIONS  
A2.1 SCALE: 1/4" = 1'-0"

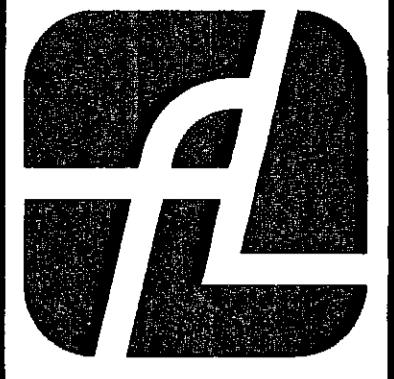


5 SOUTH ELEVATION  
A2.1 SCALE: 1/8" = 1'-0"

- REMOVE EXISTING WALL PANEL FROM SOUTH END GABLE
- REMOVE EXISTING SOFFIT AND FASCIA



8 EXPANSION JOINT DETAIL  
A2.1 SCALE: N.T.S.



F&L

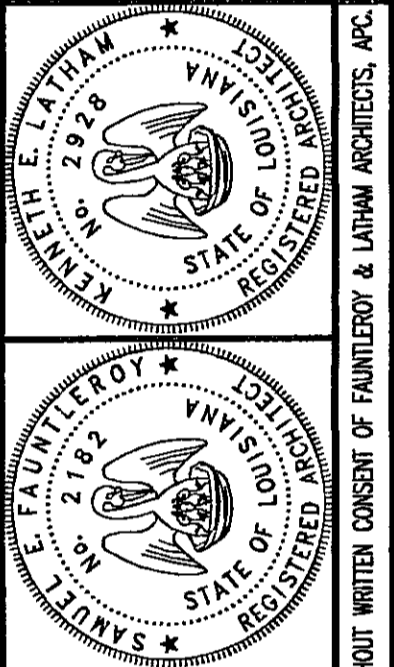
architecture  
planning

Fauntleroy & Latham  
Architects, A.P.C.

229 St. John Lane  
Covington, LA 70433

985-893-4100 Tel.  
985-893-4128 Fax

www.fl-inc.com



ATHLETIC FIELDHOUSE EXPANSION AT  
FONTAINEBLEAU HIGH SCHOOL  
MANDEVILLE, LOUISIANA  
ST. TAMMANY PARISH SCHOOL BOARD

PLAN & ELEVATIONS

Job No: 203066

Drawn by: MAH  
Checked by: KPS  
Date: 17 NOV 03  
Revised:

A2.1