

SCALE: VARS

DATE: 12-21-09

JO8 NO.: 08-191

DRAWN: DRJ

PHONE 985-928-6611 FAX 985-928-6093

KELLY McHUGH & ASSOCIATES, INC.

CIVIL ENGINEERS & LAND SURVEYORS

845 GALVEZ ST., MANDEVILLE, LA.

PARC PLACE

APARTMENTS IN ST. BERNARD PARISH, LOUISIANA for PROVIDENT REALTY ADVISORS

OBG

BEELER GUEST OWENS ARCHITECTS, INC.

4246 N. CENTRAL EXPRESSWAY SUITE 300 DALLAS, TEXAS 75205 (214) 520-8878

DATE

01-30-09

PROJECT

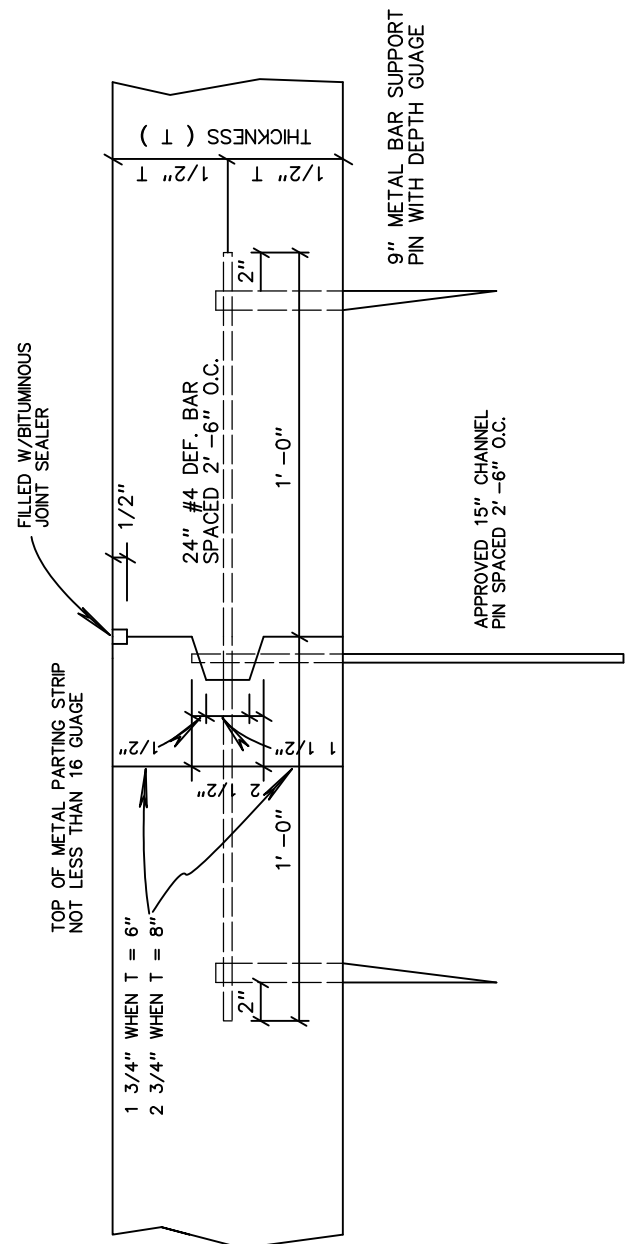
08170

SHEET NUMBER

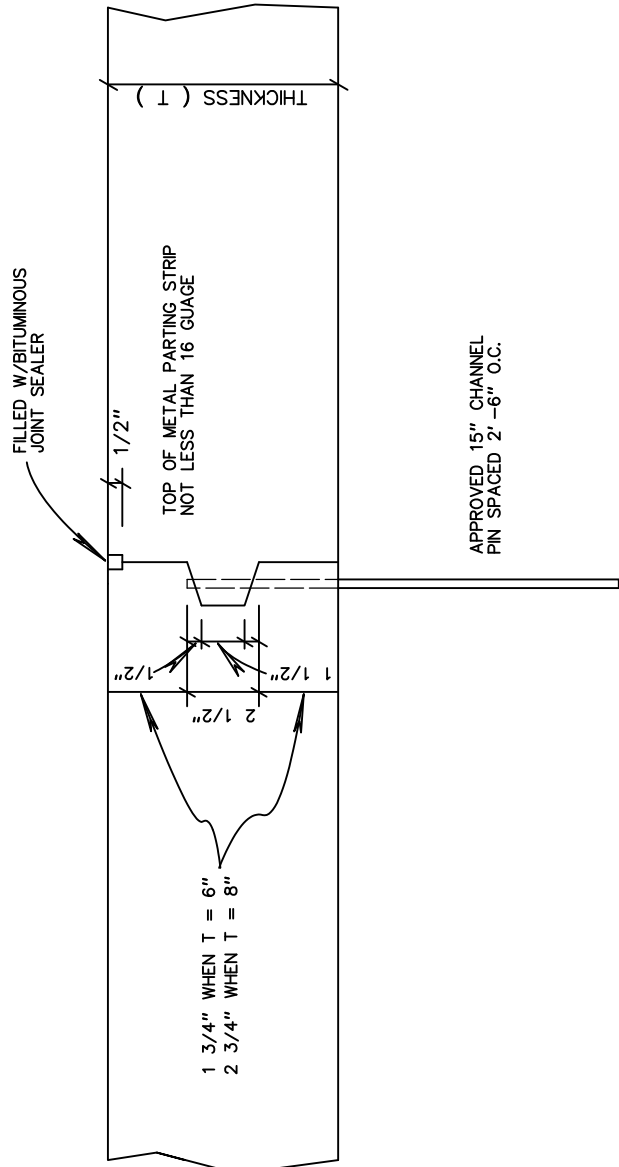
C.2B

COPYRIGHT © Beeler Guest Owens Architects, Inc. ALL RIGHTS RESERVED

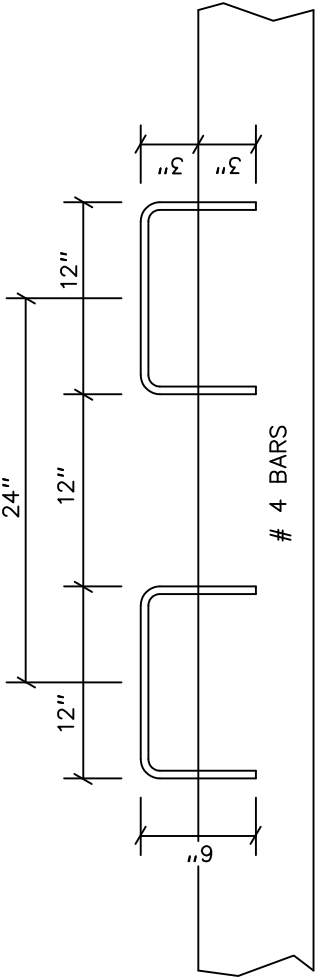
- CONCRETE PAVEMENT NOTES:
- UNLESS OTHERWISE SHOWN ALL PAVEMENTS SHALL BE A MINIMUM OF 7" THICK.
  - CONCRETE SHALL BE 4000 PSI MINIMUM OF 28 DAYS. MAX DESIGN CONTROL AND CEMENT PER CUBIC YARD 4.5 FOR UTILITY CUTS. MINIMUM 5/5 SACKS OF
  - IF CONCRETE TEMPERATURES MEASURED AT THIS POINT OF DISCHARGE EXCEED 100° F. CONCRETE SHALL BE COOLED TO 95° F. BEFORE PLACING. MAXIMUM RETARDING AMOUNT 1.5% BY WEIGHT OF CEMENT. TYPE D SHALL BE DESIGNED INTO MIX.
  - IF CONCRETE TEMPERATURES ARE 95 DEGREES FAHRENHEIT OR HIGHER AT TIME OF PLACEMENT, THE MIX SHALL BE COOLED TO 95° F. BEFORE PLACING. AFTER THE INITIAL INTRODUCTION OF THE MIXING WATER SHALL BE REJECTED AND NOT USED.
  - PAVEMENT BASE DESIGN TO BE PROVIDED FROM SOL INVESTIGATION REPORT OR INSTRUCTED BY THE ENGINEER.
  - A RECOGNIZED TESTING LAB SHALL BE PROVIDED FOR REQUIRED TESTING. RESULTS SHALL BE FURNISHED TO THE ENGINEER.
  - PAVEMENT SHALL NOT BE OPEN TO TRAFFIC UNTIL 21 DAYS AFTER PLACEMENT WITHOUT THE APPROVAL OF THE ENGINEER.
  - JOINT SEALER SHALL BE PVC EXTENDED COAT. TAR MEETING ALL OF THE REQUIREMENTS OF THE DOTD STANDARD SPECIFICATIONS (LATEST EDITION) AND WIRE BRUSHED AND BLOWN PRIOR TO APPLICATION.
  - JOINT SEALER SHALL BE PVC EXTENDED COAT. TAR MEETING ALL OF THE REQUIREMENTS OF THE DOTD STANDARD SPECIFICATIONS (LATEST EDITION) AND WIRE BRUSHED AND BLOWN PRIOR TO APPLICATION.
  - THE LOCATION ON THE PLANS OF EXISTING UTILITIES ARE APPROXIMATE AND MAY VARY. LOCATIONS OF EXISTING UTILITIES SHALL BE VERIFIED BY THE ENGINEER. CAREFULLY VERIFY THE LOCATIONS AND TAKE WHATEVER PRECAUTIONS NECESSARY TO AVOID DAMAGE TO THESE EXISTING AND ANY OTHER EXISTING UTILITIES. LOCATIONS OF EXISTING UTILITIES SHALL BE MARKED WITH CONCRECT "DOTTIE" OR ALL APPROPRIATE UTILITY COMPANIES TO MARK THESE LINES.



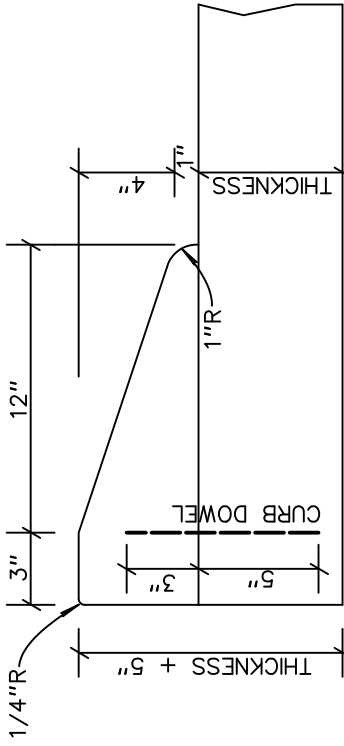
DEFORMED LONGITUDINAL JOINT



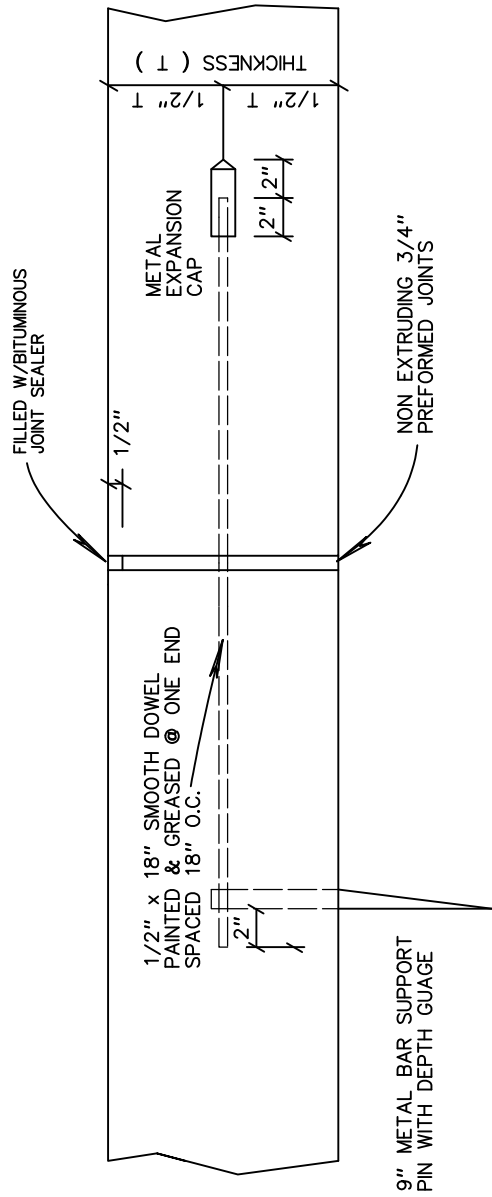
CONSTRUCTION JOINT



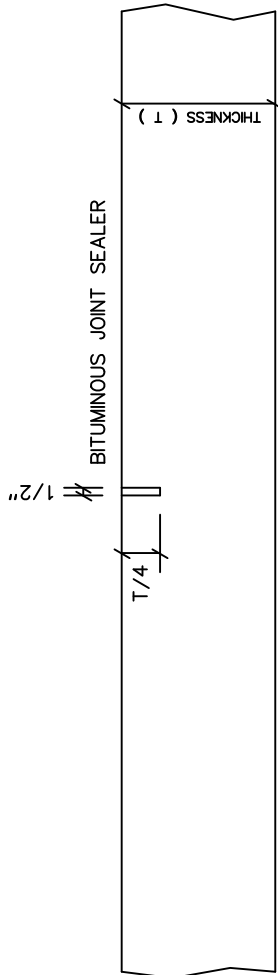
CURB DOWEL DETAIL



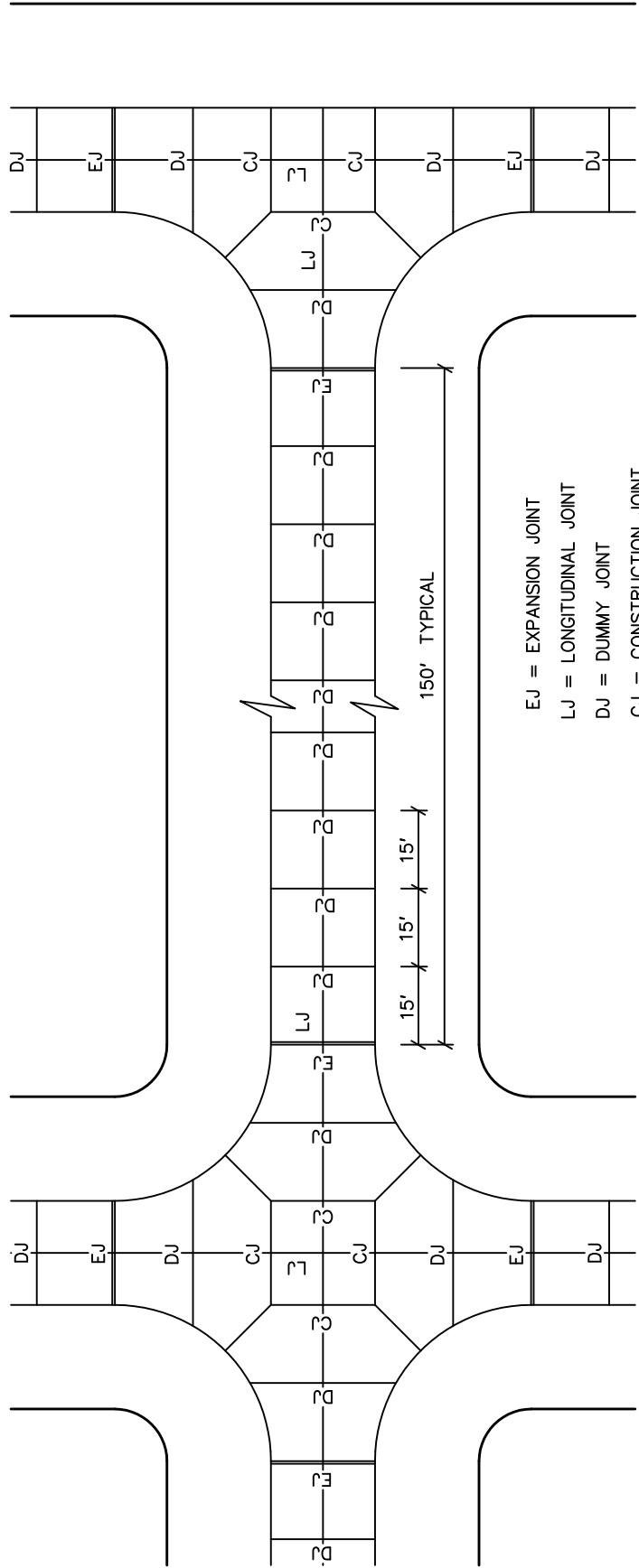
ROLLOVER CURB DETAIL



TRANSVERSE EXPANSION JOINT



TRANSVERSE DUMMY JOINT



TYPICAL JOINT SPACING

STANDARD CONCRETE PAVING DETAILS