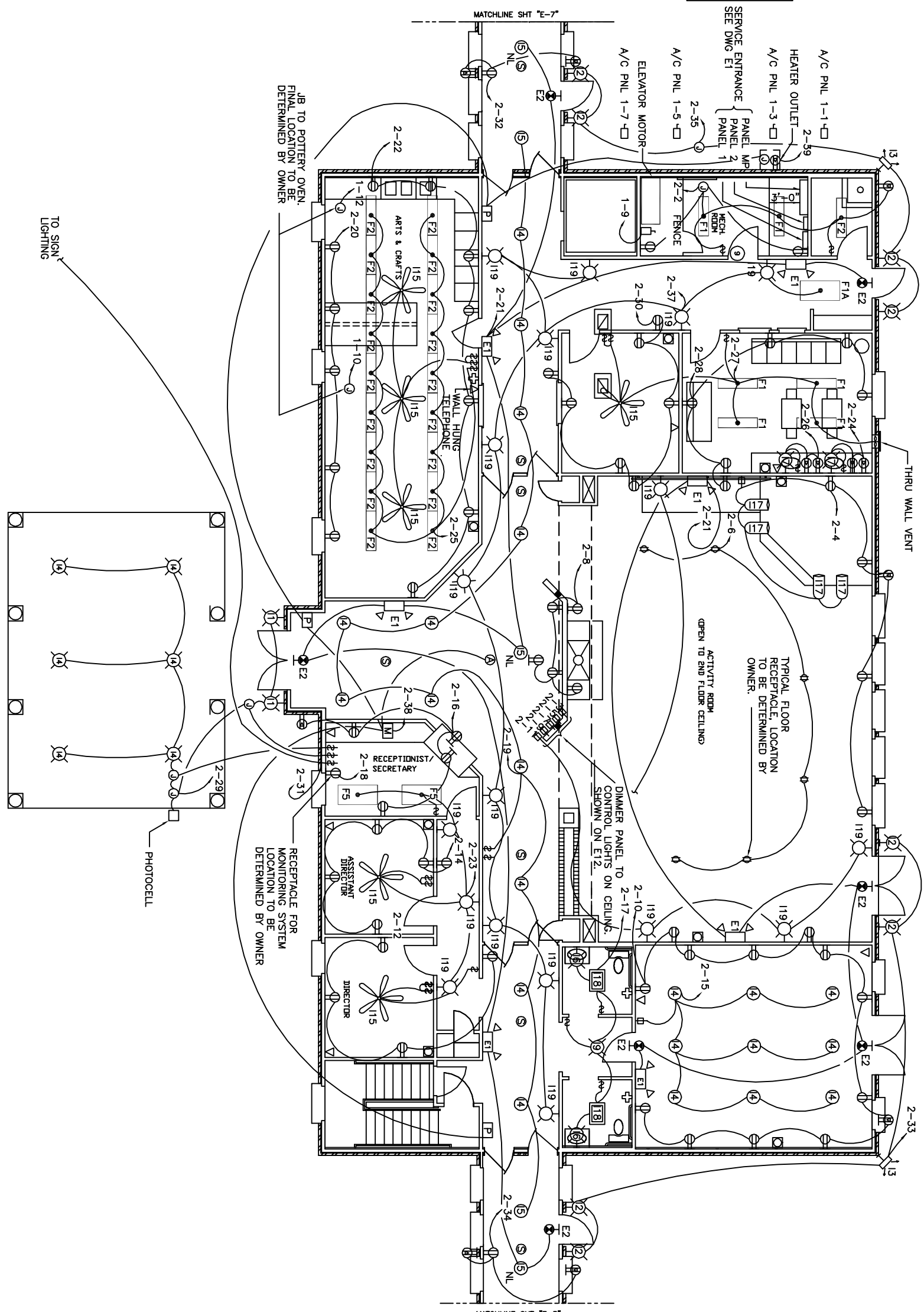


**PANELS**  
 MP 42" WIDE  
 9" THICK  
 P2 15" WIDE  
 5" THICK  
 P1 20" WIDE  
 6" THICK



**BLDG #1**  
**FIRST FLOOR ELECTRICAL PLAN**  
 SCALE: 3/16" = 1'-0"



**LEGEND**

- F1, F3, F6, 2x4 FLOURSCENT FIXTURE
- F2, 1x4 FLOURSCENT FIXTURE
- F3, FLOOD LIGHT
- F3, F4, F6, F7,
- F11, F12, F19
- F5 FLUSHMOUNT INCANDES
- NIGHT LIGHT
- F11, F18
- EXIT LIGHT, BATTERY BACK-UP
- TRACK AND STAGE LIGHTING, F10, F17
- EMERGENCY LIGHT, BATTERY BACK-UP
- SWITCH
- DIMMER SWITCH
- FLOOR RECEPTACLE
- DUPLEX RECEPTACLE
- GFI RECEPTACLE
- DISCONNECT SWITCH
- LIGHTING PANEL
- JUNCTION BOX
- THERMOSTAT
- HOT WATER HEATER WITH DISCONNECT
- 115 CEILING FAN/LIGHT
- THRU WALL VENT
- FIRE ALARM MASTER STATION
- 12 ZONE ADDRESSABLE SYSTEM
- NURSE CALL
- TELEPHONE
- CABLE TV
- FIRE ALARM PULL STATION
- AUDIO VISUAL ALARM
- TO FIRE ALARM MASTER STATION
- SMOKE DETECTOR

**NOTE**

ALL ELECTRICAL, MECHANICAL & PLUMBING PENETRATING FIRE WALLS SHALL BE FIRE CAULKED.

REVISED 01/09/02

DAMMON ENGINEERING, INC. ARCHITECTS - ENGINEERS 819 ROBERT ROAD	<b>"CAMELLIA GARDENS"</b> <b>DAMMON ENGINEERING, INC.</b> ARCHITECTS - ENGINEERS SLIDELL, LA. 70458	<b>MARK DEVELOPMENT, LLC.</b>  CAMELLIA GARDENS POSSUM HOLLOW ROAD SLIDELL, LA
SCALE: SHOWN FILE: - JOB No.: - DATE: 07/28/00 SHEET <b>E-2</b> OF -		