

ALTA/ACSM LAND TITLE SURVEY
OF
CAMELLIA
GARDENS

IN SECTION 11, T-9-S, R-14-E,
CITY OF SLIDELL,
ST. TAMMANY PARISH,
LOUISIANA

BRENT & MARY BISHOP
1989 POSSUM HOLLOW DRIVE

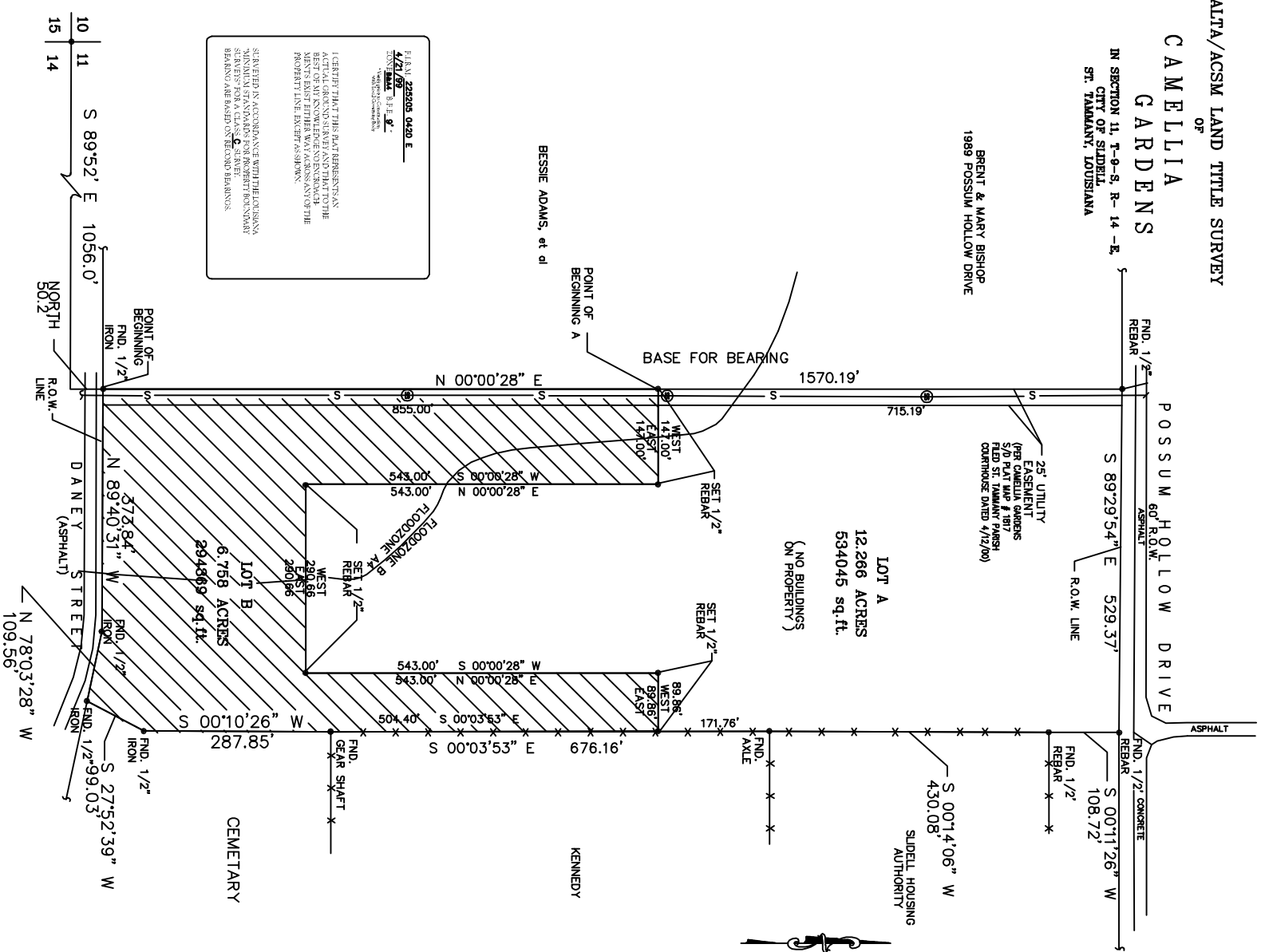
POSSUM HOLLOW DRIVE
60' R.O.W.
ASPHALT

25' UTILITY
EASEMENT
(PER CAMELLIA GARDENS
S/O PLAT MAP # 1817
FILED ST. TAMMANY PARISH
COURTHOUSE DATED 4/12/00)

LOT A
12.266 ACRES
534045 sq. ft.
(NO BUILDINGS
ON PROPERTY)

SLIDELL HOUSING
AUTHORITY

BESSIE ADAMS, et al



PLAN 222925 0420 E
J.V. BURKES & ASSOC., INC.
L.S. 1000000000
REGISTERED PROFESSIONAL SURVEYOR
STATE OF LOUISIANA

I CERTIFY THAT THIS REPRESENTS AN
ACTUAL SURVEY MADE BY ME OR UNDER
MY CLOSE PERSONAL SUPERVISION AND
THAT I AM A LICENSED SURVEYOR IN THE
STATE OF LOUISIANA. I HAVE NOT BEEN
REMOVED FROM THE LIST OF LICENSED
SURVEYORS IN ACCORDANCE WITH THE
PROVISIONS OF THE PROFESSIONAL
SURVEYING ACT, R.S. 36:1101, 36:1102,
36:1103, 36:1104, 36:1105, 36:1106,
36:1107, 36:1108, 36:1109, 36:1110,
36:1111, 36:1112, 36:1113, 36:1114,
36:1115, 36:1116, 36:1117, 36:1118,
36:1119, 36:1120, 36:1121, 36:1122,
36:1123, 36:1124, 36:1125, 36:1126,
36:1127, 36:1128, 36:1129, 36:1130,
36:1131, 36:1132, 36:1133, 36:1134,
36:1135, 36:1136, 36:1137, 36:1138,
36:1139, 36:1140, 36:1141, 36:1142,
36:1143, 36:1144, 36:1145, 36:1146,
36:1147, 36:1148, 36:1149, 36:1150,
36:1151, 36:1152, 36:1153, 36:1154,
36:1155, 36:1156, 36:1157, 36:1158,
36:1159, 36:1160, 36:1161, 36:1162,
36:1163, 36:1164, 36:1165, 36:1166,
36:1167, 36:1168, 36:1169, 36:1170,
36:1171, 36:1172, 36:1173, 36:1174,
36:1175, 36:1176, 36:1177, 36:1178,
36:1179, 36:1180, 36:1181, 36:1182,
36:1183, 36:1184, 36:1185, 36:1186,
36:1187, 36:1188, 36:1189, 36:1190,
36:1191, 36:1192, 36:1193, 36:1194,
36:1195, 36:1196, 36:1197, 36:1198,
36:1199, 36:1200.

REMARKS: THIS SURVEY WAS MADE BY ME OR UNDER MY CLOSE PERSONAL SUPERVISION AND I AM A LICENSED SURVEYOR IN THE STATE OF LOUISIANA. I HAVE NOT BEEN REMOVED FROM THE LIST OF LICENSED SURVEYORS IN ACCORDANCE WITH THE PROVISIONS OF THE PROFESSIONAL SURVEYING ACT, R.S. 36:1101, 36:1102, 36:1103, 36:1104, 36:1105, 36:1106, 36:1107, 36:1108, 36:1109, 36:1110, 36:1111, 36:1112, 36:1113, 36:1114, 36:1115, 36:1116, 36:1117, 36:1118, 36:1119, 36:1120, 36:1121, 36:1122, 36:1123, 36:1124, 36:1125, 36:1126, 36:1127, 36:1128, 36:1129, 36:1130, 36:1131, 36:1132, 36:1133, 36:1134, 36:1135, 36:1136, 36:1137, 36:1138, 36:1139, 36:1140, 36:1141, 36:1142, 36:1143, 36:1144, 36:1145, 36:1146, 36:1147, 36:1148, 36:1149, 36:1150, 36:1151, 36:1152, 36:1153, 36:1154, 36:1155, 36:1156, 36:1157, 36:1158, 36:1159, 36:1160, 36:1161, 36:1162, 36:1163, 36:1164, 36:1165, 36:1166, 36:1167, 36:1168, 36:1169, 36:1170, 36:1171, 36:1172, 36:1173, 36:1174, 36:1175, 36:1176, 36:1177, 36:1178, 36:1179, 36:1180, 36:1181, 36:1182, 36:1183, 36:1184, 36:1185, 36:1186, 36:1187, 36:1188, 36:1189, 36:1190, 36:1191, 36:1192, 36:1193, 36:1194, 36:1195, 36:1196, 36:1197, 36:1198, 36:1199, 36:1200.

REMARKS: THIS SURVEY WAS MADE BY ME OR UNDER MY CLOSE PERSONAL SUPERVISION AND I AM A LICENSED SURVEYOR IN THE STATE OF LOUISIANA. I HAVE NOT BEEN REMOVED FROM THE LIST OF LICENSED SURVEYORS IN ACCORDANCE WITH THE PROVISIONS OF THE PROFESSIONAL SURVEYING ACT, R.S. 36:1101, 36:1102, 36:1103, 36:1104, 36:1105, 36:1106, 36:1107, 36:1108, 36:1109, 36:1110, 36:1111, 36:1112, 36:1113, 36:1114, 36:1115, 36:1116, 36:1117, 36:1118, 36:1119, 36:1120, 36:1121, 36:1122, 36:1123, 36:1124, 36:1125, 36:1126, 36:1127, 36:1128, 36:1129, 36:1130, 36:1131, 36:1132, 36:1133, 36:1134, 36:1135, 36:1136, 36:1137, 36:1138, 36:1139, 36:1140, 36:1141, 36:1142, 36:1143, 36:1144, 36:1145, 36:1146, 36:1147, 36:1148, 36:1149, 36:1150, 36:1151, 36:1152, 36:1153, 36:1154, 36:1155, 36:1156, 36:1157, 36:1158, 36:1159, 36:1160, 36:1161, 36:1162, 36:1163, 36:1164, 36:1165, 36:1166, 36:1167, 36:1168, 36:1169, 36:1170, 36:1171, 36:1172, 36:1173, 36:1174, 36:1175, 36:1176, 36:1177, 36:1178, 36:1179, 36:1180, 36:1181, 36:1182, 36:1183, 36:1184, 36:1185, 36:1186, 36:1187, 36:1188, 36:1189, 36:1190, 36:1191, 36:1192, 36:1193, 36:1194, 36:1195, 36:1196, 36:1197, 36:1198, 36:1199, 36:1200.

REMARKS: THIS SURVEY WAS MADE BY ME OR UNDER MY CLOSE PERSONAL SUPERVISION AND I AM A LICENSED SURVEYOR IN THE STATE OF LOUISIANA. I HAVE NOT BEEN REMOVED FROM THE LIST OF LICENSED SURVEYORS IN ACCORDANCE WITH THE PROVISIONS OF THE PROFESSIONAL SURVEYING ACT, R.S. 36:1101, 36:1102, 36:1103, 36:1104, 36:1105, 36:1106, 36:1107, 36:1108, 36:1109, 36:1110, 36:1111, 36:1112, 36:1113, 36:1114, 36:1115, 36:1116, 36:1117, 36:1118, 36:1119, 36:1120, 36:1121, 36:1122, 36:1123, 36:1124, 36:1125, 36:1126, 36:1127, 36:1128, 36:1129, 36:1130, 36:1131, 36:1132, 36:1133, 36:1134, 36:1135, 36:1136, 36:1137, 36:1138, 36:1139, 36:1140, 36:1141, 36:1142, 36:1143, 36:1144, 36:1145, 36:1146, 36:1147, 36:1148, 36:1149, 36:1150, 36:1151, 36:1152, 36:1153, 36:1154, 36:1155, 36:1156, 36:1157, 36:1158, 36:1159, 36:1160, 36:1161, 36:1162, 36:1163, 36:1164, 36:1165, 36:1166, 36:1167, 36:1168, 36:1169, 36:1170, 36:1171, 36:1172, 36:1173, 36:1174, 36:1175, 36:1176, 36:1177, 36:1178, 36:1179, 36:1180, 36:1181, 36:1182, 36:1183, 36:1184, 36:1185, 36:1186, 36:1187, 36:1188, 36:1189, 36:1190, 36:1191, 36:1192, 36:1193, 36:1194, 36:1195, 36:1196, 36:1197, 36:1198, 36:1199, 36:1200.

NOTES:
1. VISIBLE UTILITIES HAVE BEEN LOCATED AND SHOWN ON DRAWING. IT IS POSSIBLE THAT OTHER UTILITIES ARE LOCATED ON SITE.



ALTA/ACSM LAND TITLE SURVEY OF
CAMELLIA GARDENS
SECTION 11 - T9 - S, R14 - E
SLIDELL - ST. TAMMANY PARISH - LOUISIANA

J.V. BURKES & ASSOC., INC.
1000000000
REGISTERED PROFESSIONAL SURVEYOR
STATE OF LOUISIANA

DATE: 04/20/2025
BY: JVB