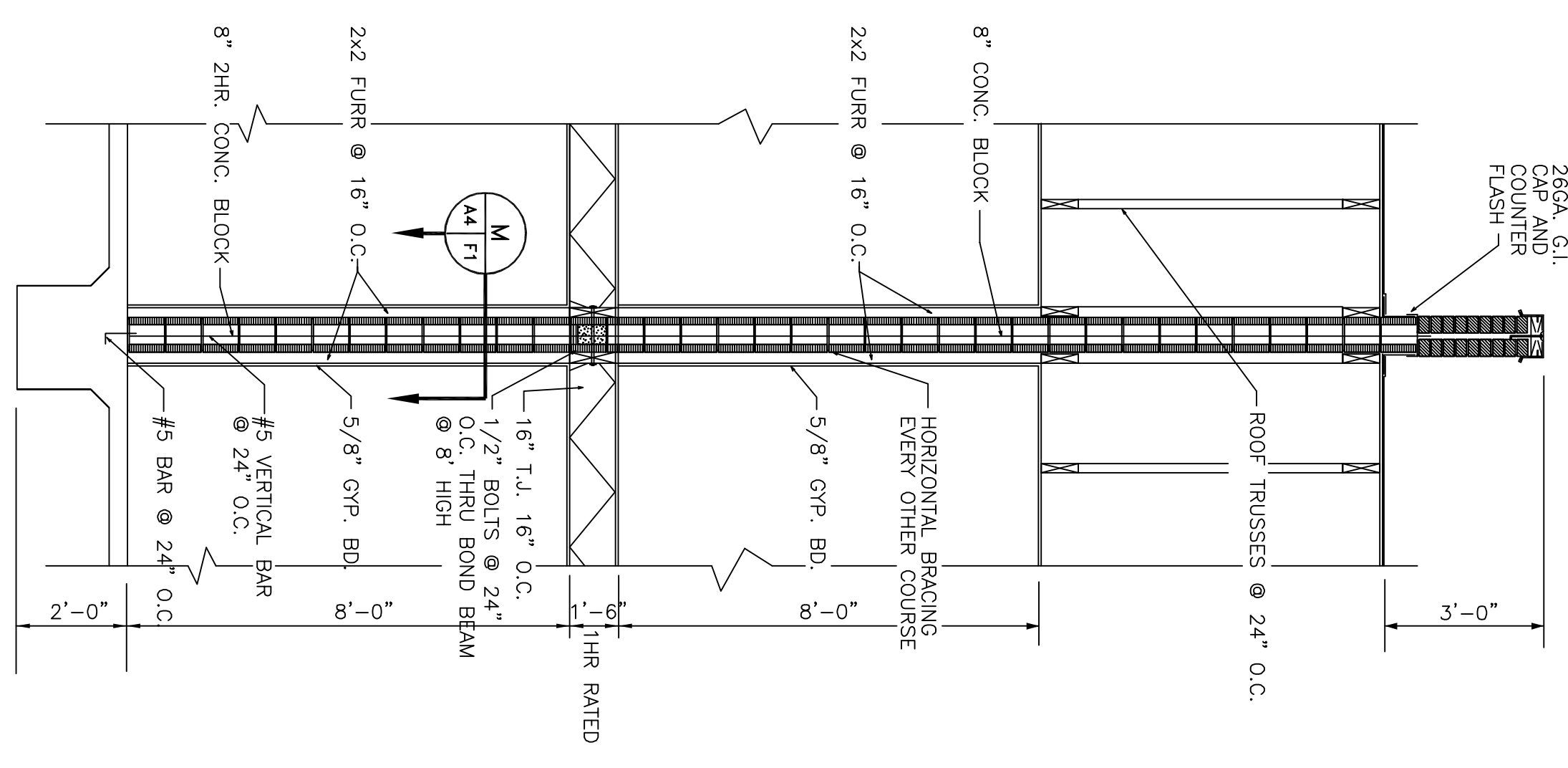
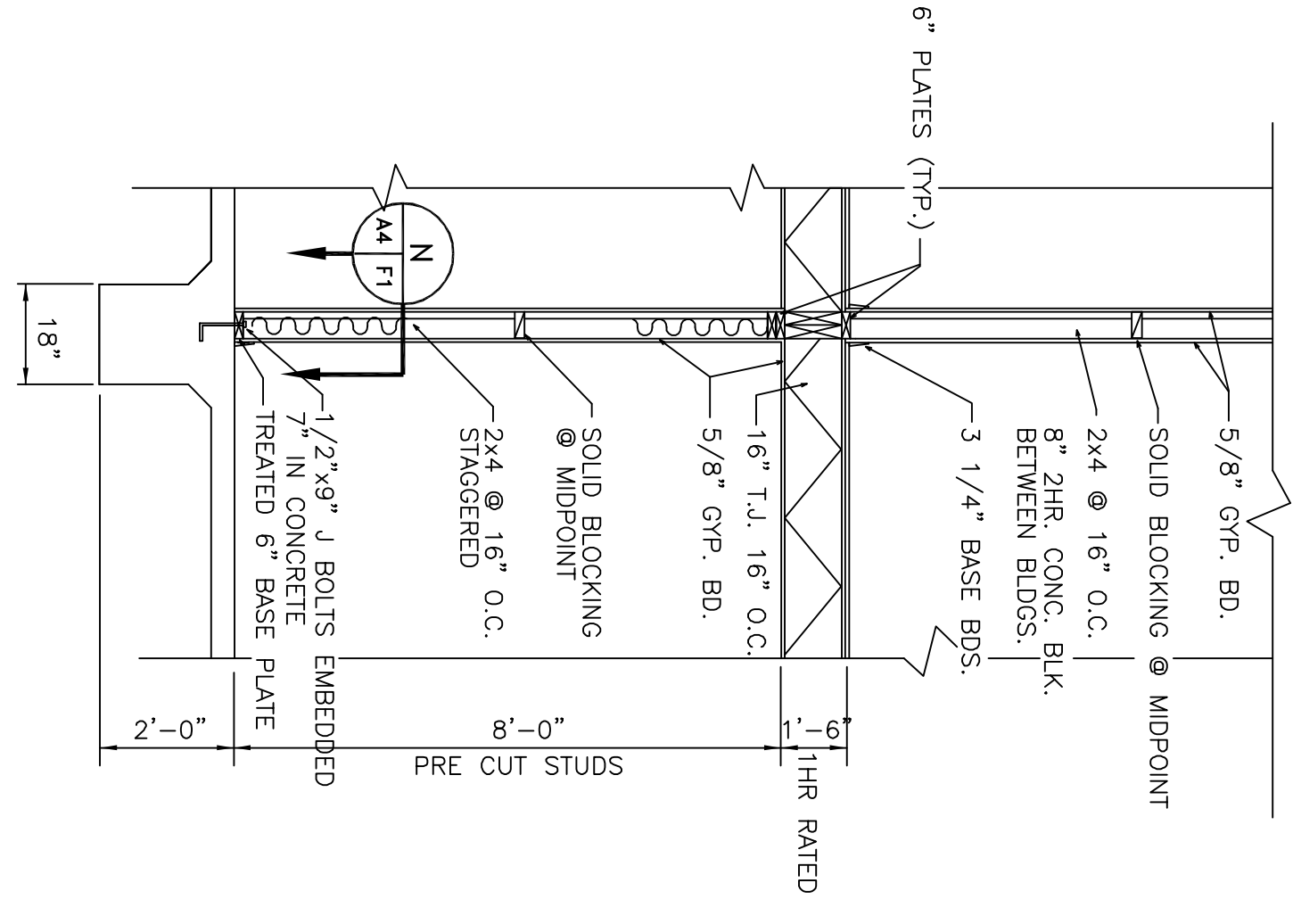


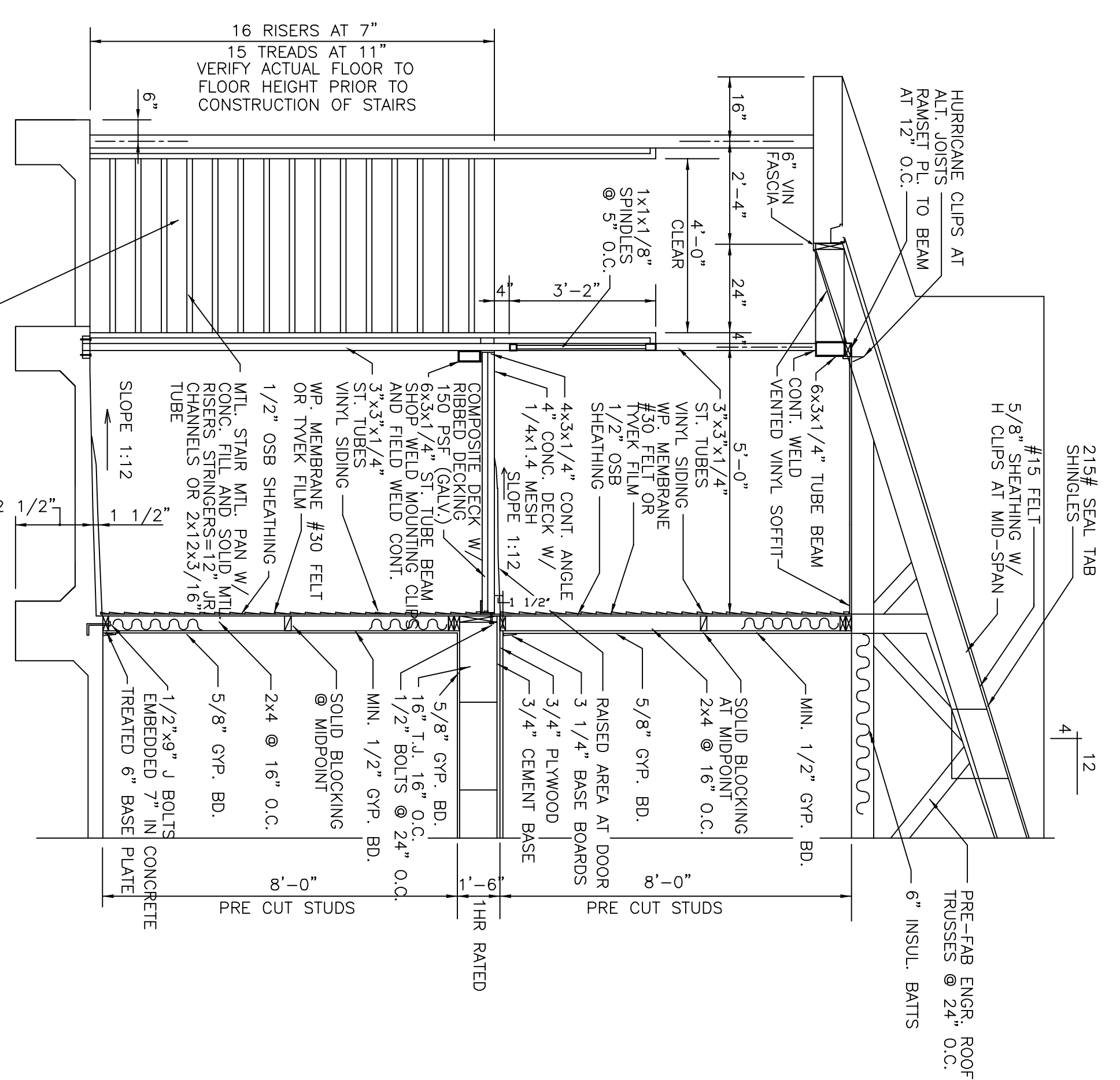
SECTION G
SCALE: 1/2" = 1'-0" (1/4")



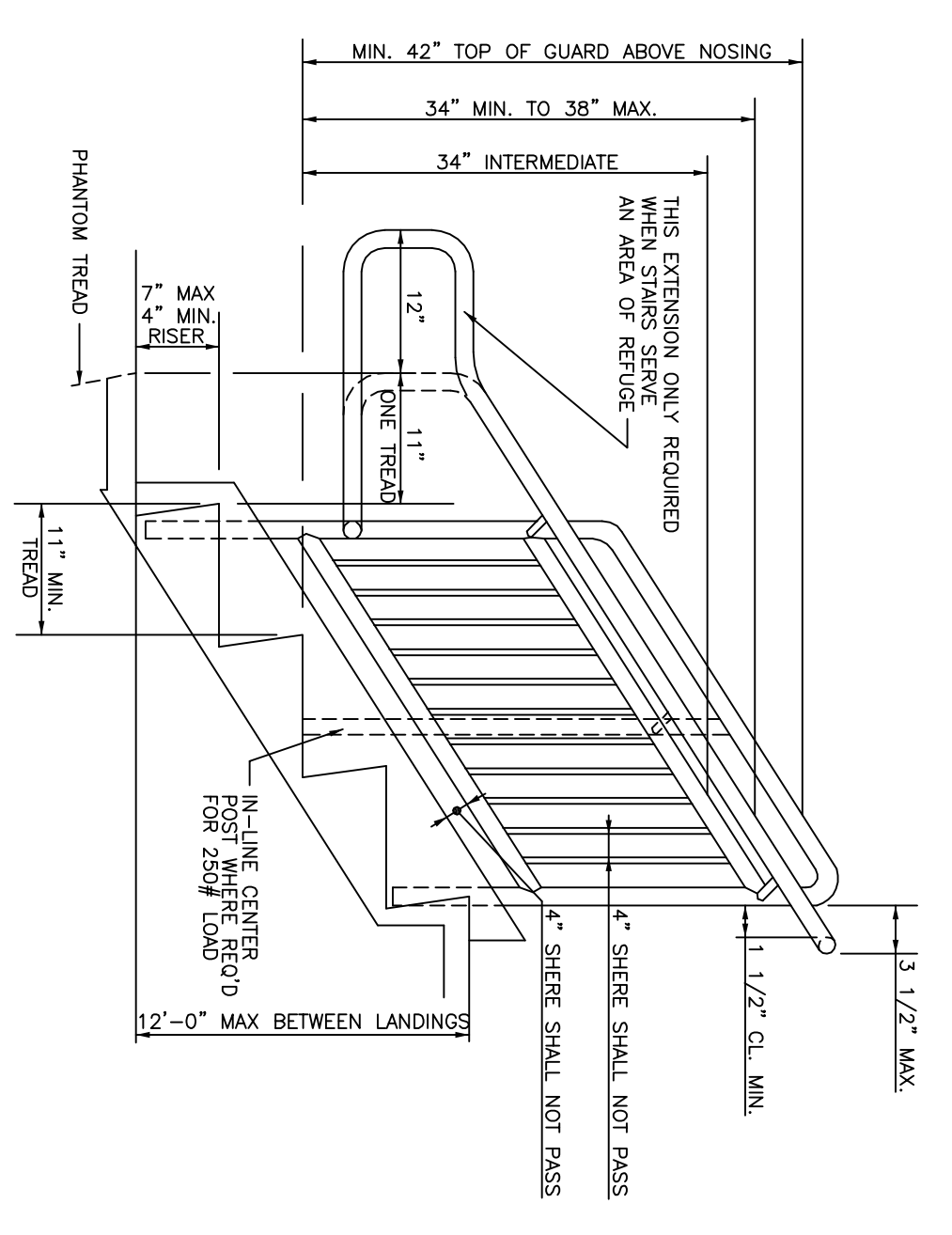
SECTION H
2 HOUR WALL
SCALE: 1/2" = 1'-0" (1/4")
NOTES:
1. RUN BLOCK BEYOND 3FT. ABOVE BLDG. AND CUT TO FIT.
2. CUT GROOVES IN SIDE OF BLOCK FOR FLASHING.



SECTION J
SCALE: 1/2" = 1'-0" (1/4")



SECTION K
SCALE: 1/2" = 1'-0" (1/4")



STAIR DETAIL 5
SCALE: 1" = 1'-0" (1/4")
NOTES:
1. USE 1/4\"/>

WALL SECTIONS