

PLUMBING NOTES:

1. PROVIDE ALL LABOR, MATERIAL AND EQUIPMENT FOR A COMPLETE OPERATING SYSTEM. THE SYSTEM SHALL INCLUDE HOT AND COLD WATER PIPING, SEWER AND VENT PIPING, INSULATION, WATER HEATER, HANGERS, VALVES, SUPPORTS WITHOUT ANY RESTRICTIONS TO VOLUME. CUT AND PATCH AS REQUIRED TO INSTALL PIPES.
2. ALL WORK AND MATERIAL SHALL CONFORM STRICTLY TO THE LATEST LOCAL CITY, PARISH, STATE AND NATIONAL GOVERNING CODES.
3. CONTRACTOR IS TO FIELD VERIFY ALL EXISTING UTILITY LOCATIONS, ELEVATIONS AND SIZES PRIOR TO COMMENCING ANY WORK. CONTRACTOR SHALL PAY NECESSARY FEES FOR THE UTILITIES CONNECTIONS.
4. CONTRACTOR IS RESPONSIBLE TO VERIFY THE EXISTING INVERTS AND SET NEW INVERTS OF SEWERAGE AND DRAINAGE PIPES.
5. SEWERAGE LINES 3-INCH AND SMALLER SHALL BE SLOPED 1/4" PER FOOT AND LINES 4-INCH AND LARGER SHALL BE 1/8" PER FOOT.
6. TEST ALL PIPING AT REQUIRED PRESSURE.
7. ALL PLUMBING SHALL BE CLOSELY COORDINATED WITH STRUCTURAL SYSTEM, MECHANICAL SYSTEM AND ELECTRICAL TO INSURE NO TRADES WILL CONFLICT WITH EACH OTHER.
8. DO NOT SCALE DRAWINGS. SEE ARCHITECTURAL DRAWINGS FOR EXACT LOCATIONS OF DOORS, WINDOWS, WALLS, FIXTURES, ETC.
9. LOCATIONS SHALL BE FIELD VERIFIED.

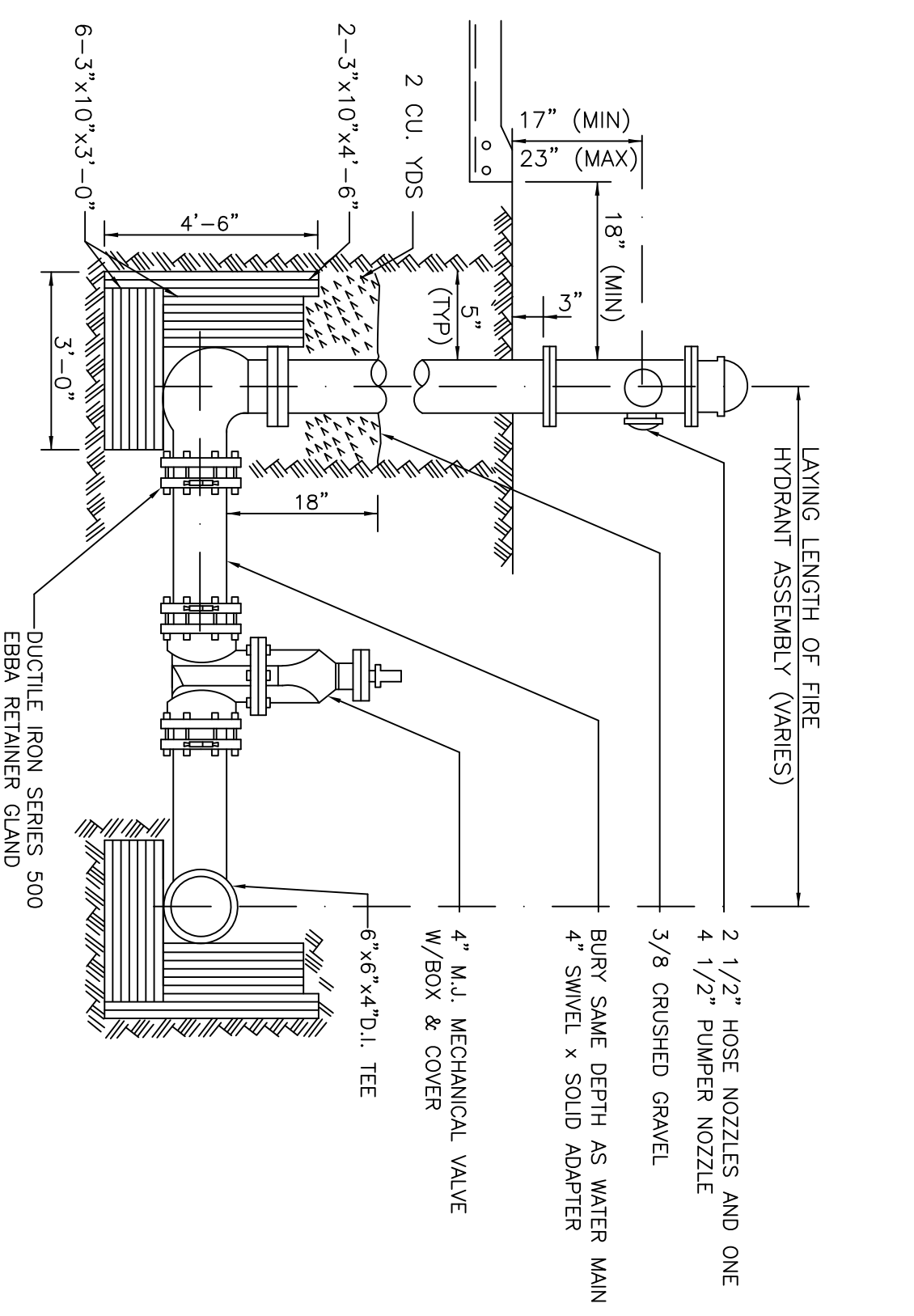
POTABLE WATER PLAN & FIRE PROTECTION LAYOUT

SCALE: 1" = 30'-0"

10. DOMESTIC HOT AND COLD WATER PIPING AND FITTINGS UNDER SLAB SHALL BE ASTM B88 COPPER WATER TUBE, TYPE K, SOFT ANNEALED. NO JOINTS SHALL BE ALLOWED UNDER THE SLAB.
11. DOMESTIC WATER PIPING AND FITTINGS ABOVE THE SLAB SHALL BE ASTM B88 COPPER WATER TUBE, TYPE L, HARD DRAWN WITH COPPER PRESSURE TYPE FITTINGS, ANSI B16.22. THE JOINTS SHALL BE SOLDERED TYPING USING ASTM B32, ALLOY GRADE 95A 95-5) SOLDER.
12. SOIL, WASTE, VENT PIPING AND FITTINGS ABOVE THE SLAB SHALL BE SERVICE WEIGHT CAST IRON PIPE WITH BELL AND SPIGOT ENDS AND ONE PIECE NEOPRENE INSERT TYPE GASKET. USE PVC SCHEDULE 40 OR ABS DWV PIPES AND FITTINGS WHERE PERMITTED BY CODE.
13. ALL WATER PIPING AND FITTINGS ABOVE THE FLOOR SHALL BE INSULATED WITH 1/2" THICK FIBERGLASS INSULATION AND JACKET.
14. ALL ELECTRICAL, MECHANICAL & PLUMBING PENETRATING FIRE WALLS SHALL BE FIRE CAULKED. (PENETRATIONS THROUGH RATED CONSTRUCTION SHALL BE SEALED WITH A MATERIAL CAPABLE OF PREVENTING THE PASSAGE OF FLAMES AND HOT GASES WHEN TESTED IN ACCORDANCE WITH ASTM-E814.)
15. FIRE LOOP & BUILDING FEEDS SIZES TO BE VERIFIED BY SPRINKLER CONTRACTOR.

LEGEND

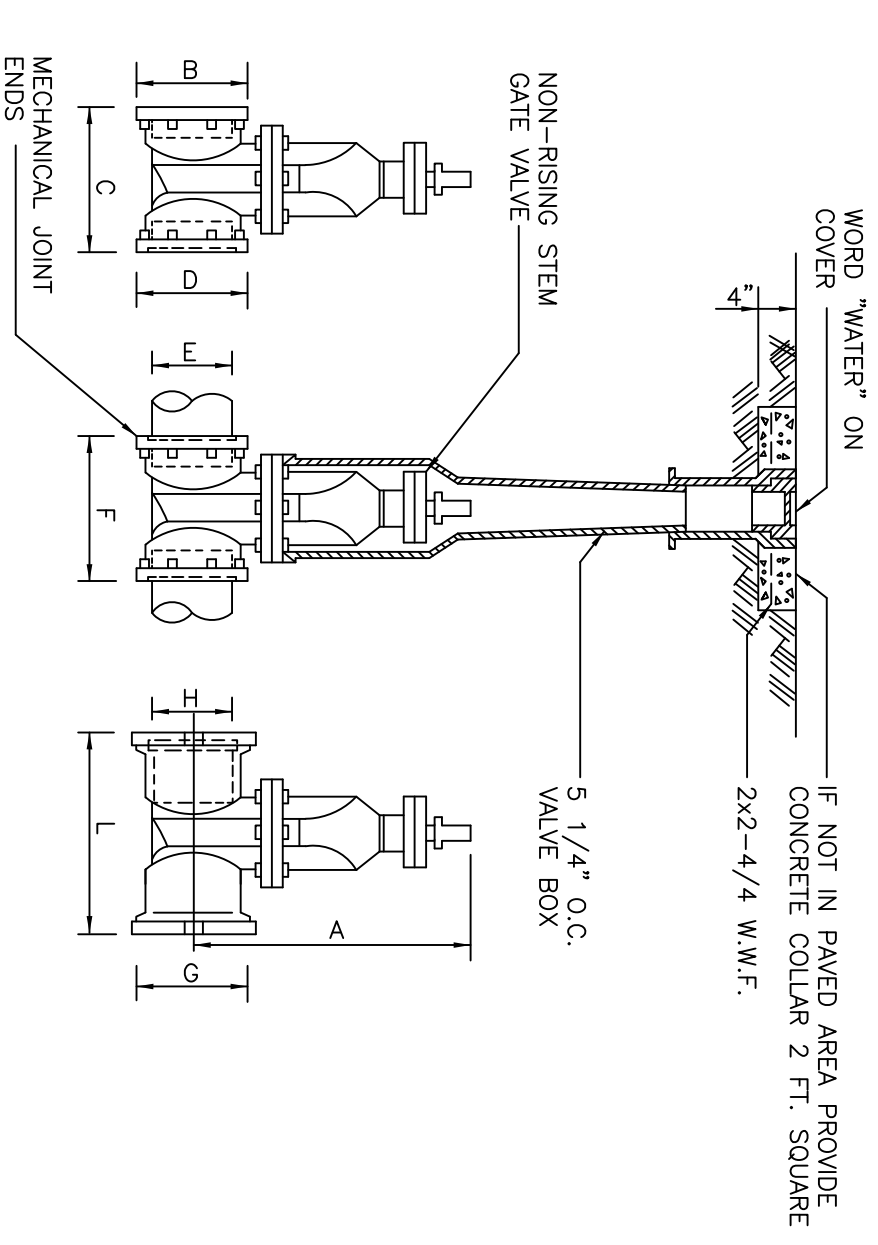
- FIRE PROTECTION
- WATER
- SEWER
- ⊙ FIRE HYDRANT



NOTE: ALL TIMBER BLOCKING SHALL BE TREATED AS PER A.W.P.A. SPECS. TIMBER BLOCKING AT ALL CHANGES IN DIRECTION GREATER THAN 22 1/2°.

FIRE HYDRANT DETAIL

SCALE: N.T.S.

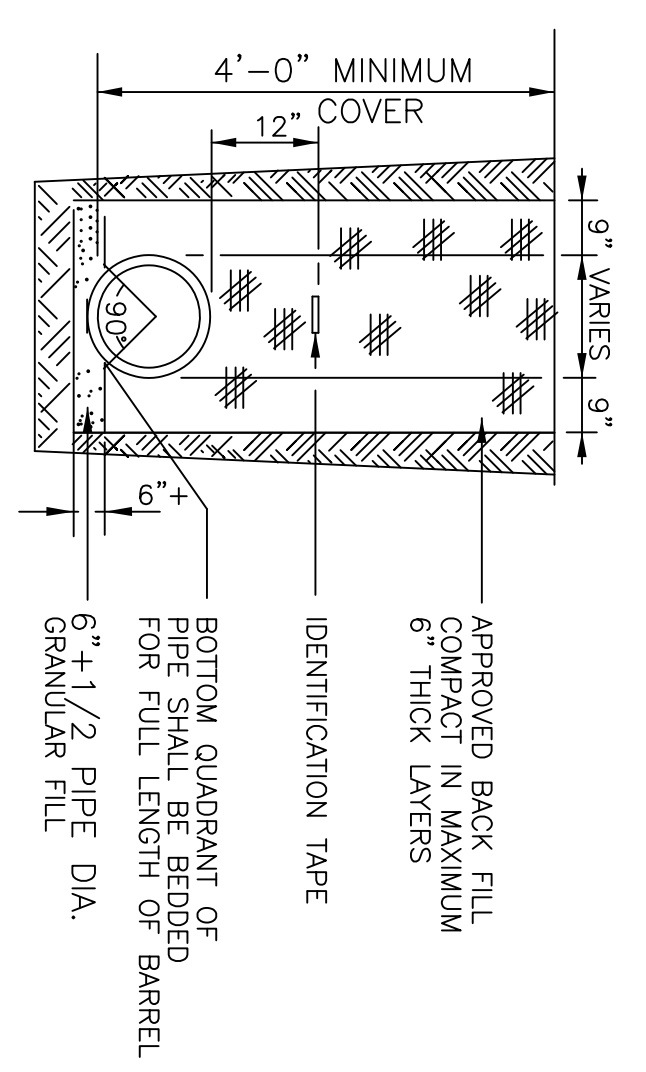


MECHANICAL JOINT GATE VALVE & VALVE BOX

SCALE: N.T.S.

MULLER A.W.W.A. GATE VALVES

SIZE IN.	DIMENSIONS (Inches)											TURNS TO OPEN
	A	B	C	D	E	F	G	H	L	L	L	
6	20	11.0	10.5	9.5	7.0	11.5	9.25	7.0	12.0	2.0		
8	23	8.5	5.1	5.1	1.75	9.15	11.1	5.1	16.2	2.1	13.5	2.6
12	31.5	9.0	4.0	2.0	3.5	3.4	0.16	7.5	14.0	16.5	3.8	



WATER BEDDING

N.T.S.

POTABLE WATER & FIRE PROTECTION

RONNIE NATAL
OAK HARBOR DRIVE
SLIDELL, LOUISIANA

HARBORSIDE APARTMENTS

DAMMON ENGINEERING, INC.
ARCHITECTS - ENGINEERS

2000 OLD SPANISH TRAIL STE 100 985-649-5832 SLIDELL, LA. 70458
DAMMONENGINEERING.COM

SCALE: AS NOTED

FILE: _____

JOB NO. _____

DATE: 08-15-03

SHEET

C-3

OF