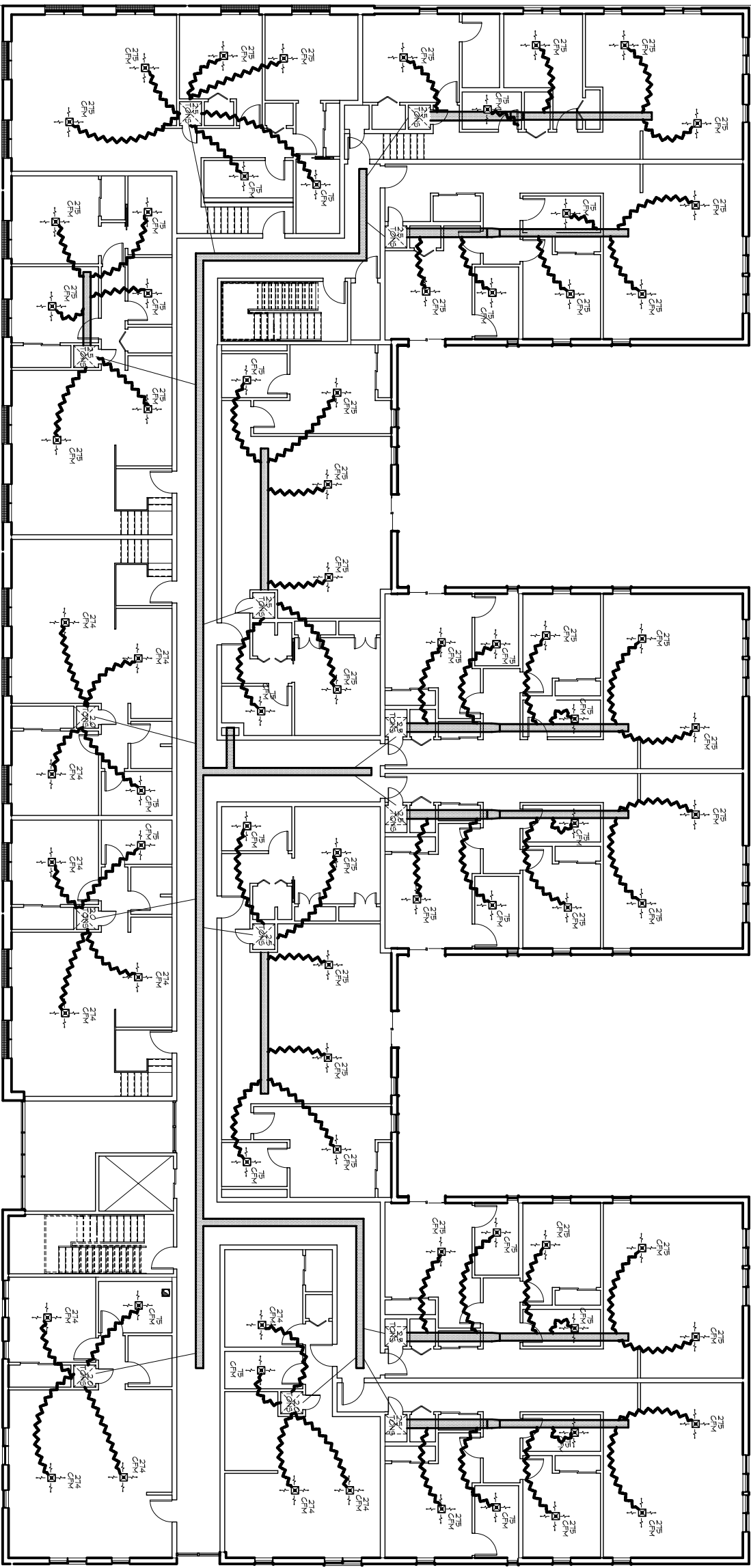


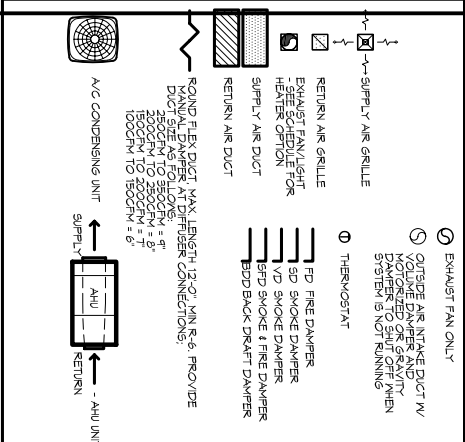
MECHANICAL HYAC FIRST FLOOR



GENERAL HYAC NOTES

1. CONCEALED DUCTWORK TO BE GALVANIZED SHEET METAL LINED WITH FERROUS GLASS FIBER DUCT LINER, MIN R-6, INSTALLED PER SMACNA STANDARDS.
2. EXPOSED DUCTWORK TO BE GALVANIZED SHEET METAL LINED WITH FERROUS GLASS FIBER DUCT LINER, MIN R-6, INSTALLED PER SMACNA STANDARDS.
3. ROUND FLEXIBLE DUCT TO BE UL-181, CLASS 1, AIR DUCT MATERIALS, DUCT SIZES SHOWN ARE CLEAR INSIDE DIMENSIONS.
4. IN ALL SYSTEMS OVER 2000 CFM AND LESS THAN 15,000 CFM, SMOKE DETECTORS SHALL BE INSTALLED IN ACCORDANCE WITH NFPA 72 IN ALL ROOMS EXCEPT STAIRWAYS, ELEVATOR SHAFTS, AND ALL FILTERS TO AUTOMATICALLY STOP THE FAN IN THE EVENT OF FIRE. PROVIDE UL LISTED 125°F FRESH AIR IN RETURN AIR OF EACH SYSTEM UNDER 2000 CFM TO SHUT DOWN THE FAN IN THE EVENT OF FIRE.
5. PROVIDE UL RATED FIRE DAMPERS WHERE REQUIRED AT ALL DUCT PENETRATIONS OF FIRE-RATED ASSEMBLIES AND WHERE REQUIRED BY CODE, INCLUDING OUTSIDE AIR INTAKES AND EXHAUST FANS.
6. CONDENSATE DRAINS TO BE PVC PIPE RUN TO PLUMBERS P-TRAAP WITHIN FIVE FEET OF AIR HANDLING UNITS.
7. ALL AIR HANDLING SYSTEMS TO BE BALANCED TO ASSURE PROPER AIR FLOWS PER PLANS.
8. ALL THERMOSTATS TO BE AUTOMATIC CHANGE-OVER WITH HEAT SWITCH.
9. EXHAUST FAN SHALL BE CONTROLLED BY A SWITCH ON THE WALL IN THE SAME LOCATION AS LIGHT SWITCH(1). PROVIDE BACK DRAFT DAMPER.
10. PROVIDE AND INSTALL WATER PROOF GRILLE VENT IN PROPER ROOF LOCATION FOR PLUMBING FIXTURE EXHAUST.
11. ALL SUPPLY AIR VENTS SHALL BE EQUIPPED WITH AIR CONTROL DAMPERS AT THE REGISTER.
12. LOCATE OUTDOOR UNITS AS SHOWN ON ARCHITECTURAL DRAWINGS.
13. REFRIGERANT LINES SHALL BE SIZED BY INT MANUFACTURER AND INSTALLED ACCORDING TO MANUFACTURER'S INSTRUCTIONS.
14. FRESH AIR SHALL BE SUPPLIED TO EACH AIR HANDLER THROUGH DUCTS OR SHALL BE SUPPLIED WITH A COULD SHOWER THROUGH WALLS SHALL BE FIRE RATED AND PENETRATIONS SHALL BE FIRE RATED PREVENTING THE PASSAGE OF FLAMES AND HOT GASES WHEN TESTED IN ACCORDANCE WITH ASTM-E814.
15. ALL MECHANICAL SYMBOLS ARE DRAWN DIAGRAMMATICALLY. CONTRACTOR TO VERIFY WITH OWNER LOCATIONS OF VENTS, DAMPERS, REGISTERS, ETC.
16. FLEXIBLE DUCTWORK LENGTH NOT TO EXCEED 12'-0".
17. REFER TO REFLECTED CEILING PLAN FOR FINAL GRILLE AND DIFFUSER LOCATIONS AND COORDINATE AS REQUIRED.
18. FINAL LOCATION OF TEMPERATURE CONTROLS TO BE COORDINATED WITH OWNER AT JOB SITE.
19. PROVIDE AND INSTALL SMOKE DETECTORS AS APPROVED BY LOCAL AUTHORITY.
20. PROVIDE AND INSTALL FRESH AIR INTAKE WITH PROVIDE WITH ACCESS PANEL, WIRING BY ELECTRICAL CONTRACTOR.
21. FRESH AIR INTAKES ARE REQUIRED TO HAVE MOTORISED OR GRAVITY DAMPERS TO SHUT OFF WHEN SYSTEM IS NOT RUNNING.
22. PROVIDE BIRD SCREENS AT ALL EXTERIOR MECHANICAL PENETRATIONS.
23. COORDINATE WALL MOUNTED THERMOSTAT LOCATIONS WITH ALL OWNERS FINISHED ITEMS EITHER WALL MOUNTED OR FLOOR MOUNTED AGAINST PARTITIONS. REFER TO ARCHITECTURAL DRAWINGS.
24. SEE ROOF PLAN FOR ALL ROOF PENETRATIONS.
25. PROVIDE MIN 18 GA GALVANIZED SHEET METAL TO BLANK-OFF GABLE VENTS WHERE INTAKE/EXHAUST DUCTS OCCUR.

LEGEND



1581 MAGAZINE STREET
New Orleans, Louisiana 70130

architecture + planning +
in|en|g|e|e|rs
Street 70130
504.593.9074 tel
www.studiotwo.com

Drawn by
Sheet
Comments

Revisions:
Issue Purpose: