
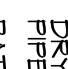
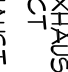
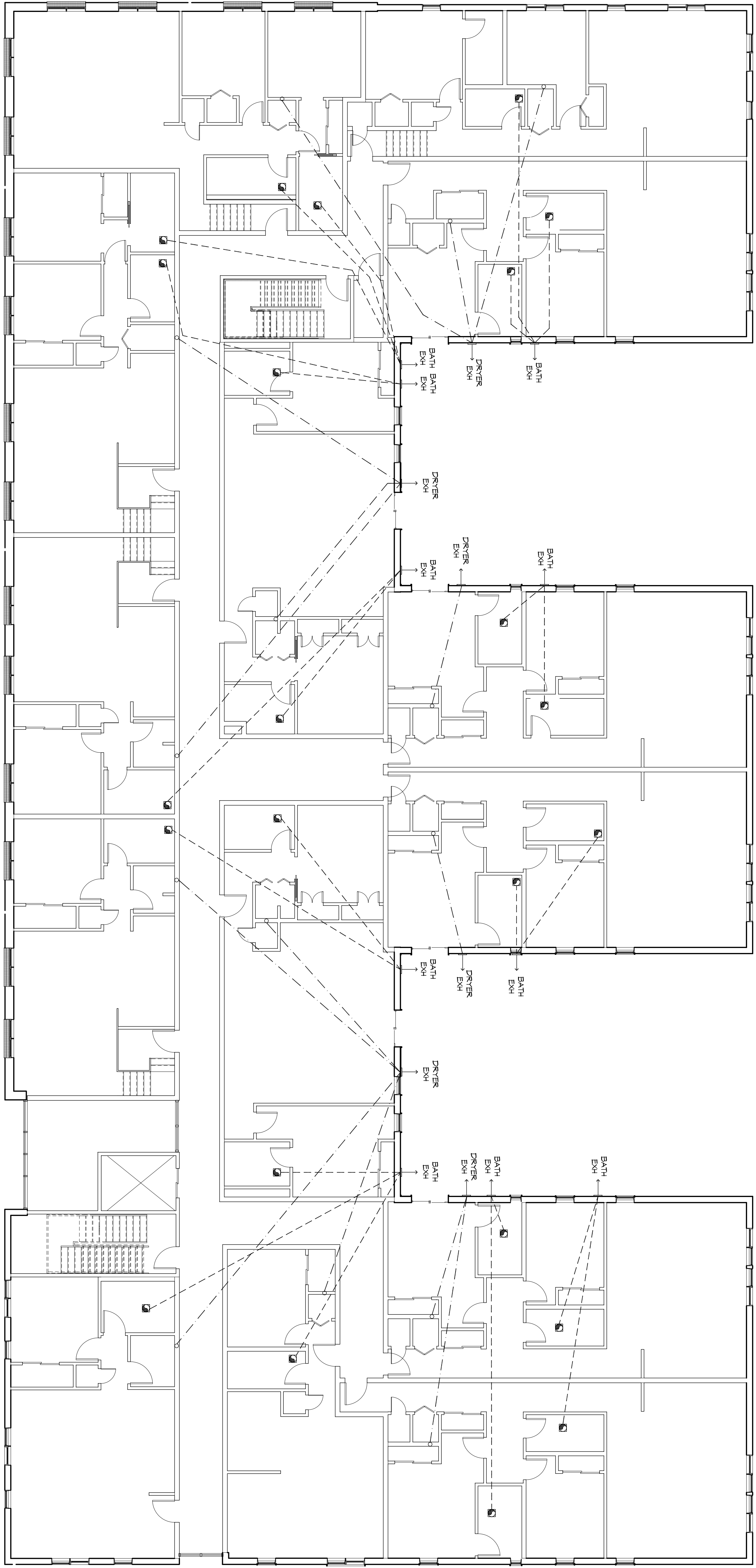


GENERAL HVAC NOTES

1. CONCEALED DUCTWORK TO BE GALVANIZED SHEET METAL LINED WITH FIBROUS GLASS DUCT LINER, MIN R-6, INSTALLED PER SMACNA STANDARDS.
2. EXPOSED DUCTWORK TO BE GALVANIZED SHEET METAL LINED WITH FIBROUS GLASS DUCT LINER, MIN R-6, INSTALLED PER SMACNA STANDARDS.
3. ROUND FLEXIBLE DUCT TO BE UL-181 CLASS 1, AIR DUCT MATERIALS.
4. DUCT SIZES SHOWN ARE CLEAR INSIDE DIMENSIONS.
5. IN ALL SYSTEMS OVER 2000 CFM AND LESS THAN 15,000 CFM, SMOKE TESTS SHALL BE CONDUCTED ON ALL DUCTWORK IN THE FIELD IN THE RETURN DUCT DOWNSTREAM OF THE AIR HANDLING UNIT AND ALL FILTERS TO AUTOMATICALLY STOP THE FAN.
6. PROVIDE UL LISTED 125°F FRESH AIR INTAKE IN RETURN AIR OF EACH SYSTEM UNDER 2000 CFM TO SHUT DOWN THE FAN IN THE EVENT OF FIRE PENETRATIONS OF FIRE-RATED ASSEMBLIES AND WHERE REQUIRED BY CODE, INCLUDING OUTSIDE AIR INTAKES AND EXHAUST FANS.
7. CONDENSATE DRAINS TO BE PVC PIPE RUN TO FLOWERS P-TRAP WITHIN FIVE FEET OF AIR HANDLING UNITS.
8. ALL AIR HANDLING SYSTEMS TO BE BALANCED TO ASSURE PROPER AIR FLOWS PER PLANS.
9. ALL THERMOSTATS TO BE AUTOMATIC CHANGED/OVER WITH HEAT SWITCH.
10. EXHAUST FAN SHALL BE CONTROLLED BY A SWITCH ON THE WALL IN THE SAME LOCATION AS LIGHT SWITCHES. PROVIDE BACK DRAFT DAMPER, PROVIDE AND INSTALL WATER PROOF GULLIE VENT IN PROPER ROOF LOCATION FOR PUMPING FIXTURE EXHAUST.
11. ALL SUPPLY AIR VENTS SHALL BE EQUIPPED WITH AIR CONTROL DAMPERS AT THE REGISTER.
12. LOCATE OUTDOOR UNITS AS SHOWN ON ARCHITECTURAL DRAWINGS.
13. REFRIGERANT LINES SHALL BE SIZED BY UNIT MANUFACTURER AND INSTALLED ACCORDING TO MANUFACTURER'S INSTRUCTIONS.
14. FRESH AIR SHALL BE SUPPLIED TO EACH AIR HANDLER THROUGH EXTERIOR WALL DUCT SUPPLIED WITH A CONTROL DAMPER.
15. ALL ELECTRICAL, MECHANICAL, AND PUMPING PENETRATING FIRE WALLS SHALL BE FIRE CALKED. PENETRATIONS THROUGH RATED CONSTRUCTION SHALL BE SEALED WITH A MATERIAL CAPABLE OF PREVENTING THE PASSAGE OF FLAMES AND HOT GASES WHEN TESTED IN ACCORDANCE WITH ASTM E9-14.
16. ALL MECHANICAL SYMBOLS ARE DRAWN DISCRIMINATELY. CONTRACTOR TO VERIFY WITH OWNER LOCATIONS OF VENTS, DAMPERS, REGISTERS, ETC.
17. FLEXIBLE DUCTWORK LENGTH NOT TO EXCEED 12'-0".
18. REFER TO REFLECTED CEILING PLAN FOR FINAL GRILLE AND DIFFUSER LOCATION AND COORDINATE AS REQUIRED.
19. FINAL LOCATION OF TEMPERATURE CONTROLS TO BE COORDINATED WITH OWNER AT JOB SITE.
20. REMOVE AND INSTALL SMOKE DETECTORS AS APPROVED BY LOCAL A.U.S. PLACE NEAR R/A AND S/A OPENINGS OF A/JU AND PROVIDE WITH ACCESS PANEL, RANKING BY ELECTRICAL CONTRACTOR.
21. FRESH AIR INTAKES ARE REQUIRED TO HAVE WINDING OR GRAVITY DAMPERS TO SHUT OFF WHEN SYSTEM IS NOT RUNNING.
22. PROVIDE BRD SCREENS AT ALL EXTERIOR MECHANICAL PENETRATIONS.
23. COORDINATE WALL MOUNTED THERMOSTAT LOCATIONS WITH ALL OWNER FINISHINGS. REFER TO ARCHITECTURAL DRAWINGS.
24. SEE ROOF PLAN FOR ALL ROOF PENETRATIONS.
25. PROVIDE MIN 18 GA GALVANIZED SHEET METAL TO BLANK-OFF GABLE VENTS WHERE IN-TAKE/EXHAUST DUCTS OCCUR.

LEGEND

-  EXHAUST FAN
-  DRYER EXHAUST, HARD PIPED DUCT
-  BATH EXHAUST, HARD PIPED DUCT



MECHANICAL EXHAUST FIRST FLOOR

In/Out Venturi with:

DAMMON ENGINEERING, INC.

Architects & Engineers

Chief Engineer: Brian Walsh, PE
 554 Old Spanish Trail
 Slidell, LA 70458
 www.dammonengineering.com
 info@dammonengineering.com
 PH: 985.649.5832
 F: 985.641.5950

architecture + planning + interiors
 1119 Tchoupitoulas Street
 New Orleans, LA 70130
 504.593.9074 tel
 www.studio2to.com

1581 MAGAZINE STREET
 New Orleans, Louisiana 70130

Drawn By:	
Author:	
Street Comments:	
Revisions:	
Issue Purpose:	
Date:	
Permit:	
MECHANICAL EXHAUST FIRST FL	
6/29/2015	
M101	
©2014 STUDIO2	