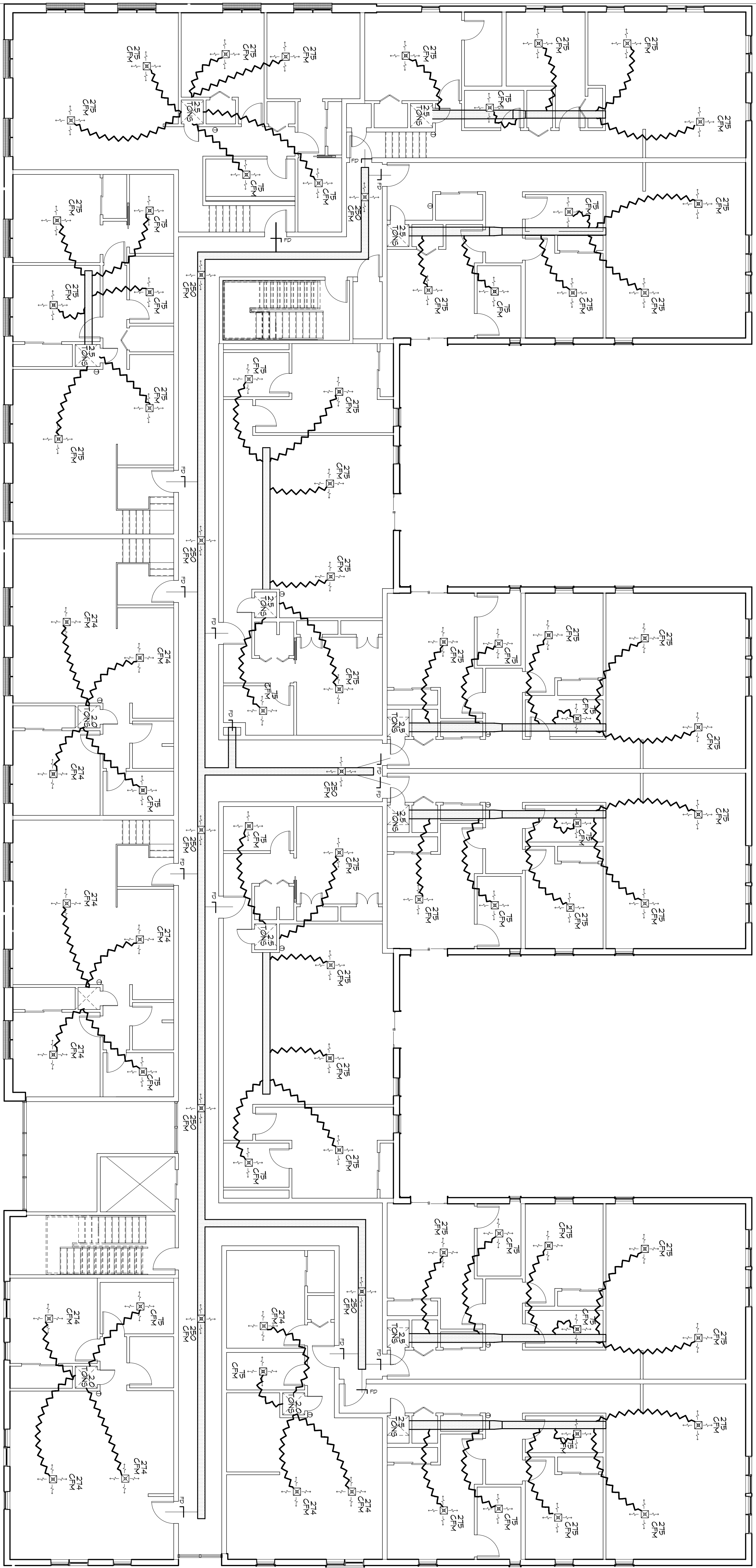


- ### GENERAL HVAC NOTES
1. CONCEALED DUCTWORK TO BE GALVANIZED SHEET METAL LINED WITH FIBROUS GLASS DUCT LINER, MIN R-6, INSTALLED PER SMACNA STANDARDS.
 2. EXPOSED DUCTWORK TO BE GALVANIZED SHEET METAL LINED WITH FIBROUS GLASS DUCT LINER, MIN R-6, INSTALLED PER SMACNA STANDARDS.
 3. ROUND FLEXIBLE DUCT TO BE UL-181, CLASS 1, AIR DUCT MATERIALS.
 4. DUCT SIZES SHOWN ARE CLEAR INSIDE DIMENSIONS.
 5. IN ALL SYSTEMS OVER 2000 CFM AND LESS THAN 15,000 CFM, SMOKE DETECTORS SHALL BE INSTALLED IN ACCORDANCE WITH NFPA 72 IN THE RETURN DUCT DOWNSTREAM OF THE AIR HANDLING UNIT AND ALL FILTERS TO AUTOMATICALLY STOP THE FAN.
 6. PROVIDE UL LISTED 72" F FRESH AIR RETURN AIR OF EACH SYSTEM UNDER 2000 CFM TO SHUT DOWN THE FAN IN THE EVENT OF FIRE.
 7. PROVIDE UL RATED FIRE DAMPERS WHERE REQUIRED AT ALL DUCT PENETRATIONS INCLUDING OUTSIDE AIR INTAKES AND EXHAUST FANS.
 8. COMPENSATE PIPING TO BE P-16 PIPE RUN TO PLUMBERS P-TAP WITHIN FIVE FEET OF AIR HANDLING UNITS.
 9. ALL AIR HANDLING SYSTEMS TO BE BALANCED TO ASSURE PROPER AIR FLOW PER PLANS.
 10. ALL THERMOSTATS TO BE AUTOMATIC CHANGES/ER WITH HEAT SWITCH.
 11. EXHAUST FAN SHALL BE CONTROLLED BY A SWITCH ON THE WALL IN THE SAME LOCATION AS LIGHT SWITCHES. PROVIDE BACK DRIFT DAMPER.
 12. PROVIDE FOR FAN/BLOWER TRIP/REBLOWER.
 13. ALL SUPPLY AIR VENTS SHALL BE EQUIPPED WITH AIR CONTROL DAMPERS AT THE RECIPIERS.
 14. LOCATE OUTDOOR UNITS AS SHOWN ON ARCHITECTURAL DRAWINGS.
 15. REFRIGERANT LINES SHALL BE SIZED BY UNIT MANUFACTURER AND INSTALLED ACCORDING TO MANUFACTURERS INSTRUCTIONS.
 16. FRESH AIR SHALL BE SUPPLIED TO EACH AIR HANDLER THROUGH EXTERIOR WALL DUCT SUPPLIED WITH A CONTROL DAMPER.
 17. ALL ELECTRICAL, MECHANICAL, AND PLUMBING PENETRATING FIBER GLASS INSULATION SHALL BE SEALED WITH KNITTED CABLE OF CORRESPONDING THE PASSAGE OF FLAMES AND HOT GASES WHEN TESTED IN ACCORDANCE WITH ASTM-E814.
 18. ALL MECHANICAL SYMBOLS ARE DRAWN DIAGRAMMATICALLY. CONTRACTOR TO VERIFY WITH OWNER DIAGRAMMATICALLY, REGISTER, ETC.
 19. FLEXIBLE DUCTWORK LENGTH NOT TO EXCEED 12'-0".
 20. REFER TO REFLECTED CEILING PLAN FOR FAN, GRILLE AND DIFFUSER LOCATIONS AND COORDINATE AS REQUIRED.
 21. FINAL LOCATION OF TEMPERATURE CONTROLS TO BE COORDINATED WITH OWNER AT JOB SITE.
 22. PROVIDE AND INSTALL SMOKE DETECTORS AS APPROVED BY LOCAL AHJ'S. PLACE NEAR R/A AND S/A OPENINGS OF AHU AND PROVIDE WITH ACCESS PANEL, MARKING BY ELECTRICAL CONTRACTOR.
 23. FRESH AIR INTAKES ARE REQUIRED TO HAVE NOTICED OR GRAVITY DAMPERS TO SHUT OFF WHEN SYSTEM IS NOT RUNNING.
 24. PROVIDE BIRD SCREENS AT ALL EXTERIOR MECHANICAL PENETRATIONS. COORDINATE WALL MOUNTED THERMOSTAT LOCATIONS WITH ALL OWNER FURNISHED ITEMS EITHER WALL MOUNTED OR FLOOR MOUNTED AGAINST PARTITIONS. REFER TO ARCHITECTURAL DRAWINGS.
 25. SEE ROOF PLAN FOR ALL ROOF PENETRATIONS.
 26. PROVIDE KIN 18, 6A GALVANIZED SHEET METAL TO BLANK-OFF GABLE VENTS WHERE INTAKE/EXHAUST DUCTS OCCUR.



MECHANICAL HVAC FIRST FLOOR

- ### LEGEND
- ① THERMOSTAT
 - FD SUPPLY AIR GRILLE WITH FIRE DAMPER
 - FD 6" FRESH AIR SUPPLY WITH FIRE DAMPER
 - SUPPLY AIR DUCT
- ROUND FLEXIBLE DUCT MAX LENGTH 12'-0". MIN R-6. PROVIDE DUCT SIZES AS TO FOLLOW. PROVIDE UL LISTED 72" F FRESH AIR RETURN AIR OF EACH SYSTEM UNDER 2000 CFM TO SHUT DOWN THE FAN IN THE EVENT OF FIRE.

A/C UNIT SCHEDULE

NO.	TOTAL BTU	CFM	P.A.	HEAT ELEC.	ELECTRICAL VOLTAGE	CONTROL	BEAKER	LENOX	COMMENTS
1	30,000	1,250	1.25 KW	75 KW	48 AMP		LENOX		
2	23,000	987	1 KW	5 KW	30 AMP		LENOX		

2.5 TON CONDENSERS MODEL # YPI4-C90
 2.5 AIR HANDLERS MODEL # CAV53H-C90
 2.0 TON CONDENSERS MODEL # YPI4-C94
 2.5 AIR HANDLERS MODEL # CAV53H-C94

In joint venture with:

DAMMON ENGINEERING, INC.
Architects & Engineers

Chief Engineer: Brian Mistick, PE
 534 Old Spanish Trail
 Slidell, LA 70368

www.dammonengineering.com
 info@dammonengineering.com
 PH: 985.646.5832
 F: 985.641.1950